

# LCC QUARTERLY

## WINTER 2024



**Complete details available online**  
**[lowercolumbia.edu/classes](https://lowercolumbia.edu/classes)**



**Winter quarter starts January 3**

# NEW & NOTEWORTHY

**Winter quarter schedule now available  
at [lowercolumbia.edu/classes](https://lowercolumbia.edu/classes)**

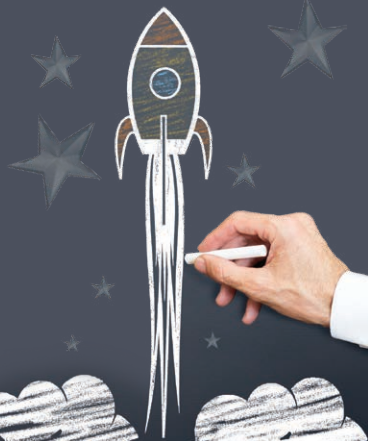
## Important Deadlines

- **FINANCIAL AID** – apply by November 20, 2023 to start in winter 2024. Winter classes start January 3, 2024.
- **MEDICAL ASSISTING** – apply February 1 through April 30 to start in fall 2024.
- **BACHELOR OF APPLIED SCIENCE (BAS)** – apply December 1 through May 1 to start our Teacher Education or Organizational Leadership and Technical Management program in summer or fall 2024.

## Launch your career quickly with a short-term credential from LCC

**Certificates available in the trades, healthcare, business, truck driving, education, and more.**

**Apply for free @  
[lowercolumbia.edu/apply](https://lowercolumbia.edu/apply)  
Classes start January 3, 2024**



**About This Mailer:** LCC sends quarterly mailers to all households in Cowlitz and Wahkiakum counties four times a year to inform residents about college programs and services. Because they are addressed to “residential customer,” we are unable to remove individuals from our distribution list.

**Volume 16, No. 1, Winter 2024.** LCC Class Schedule (USPS 025-007) is published four times a year (November, February, April and June) by Lower Columbia College. The Lower Columbia College Office of Effectiveness & College Relations is located at 1600 Maple Street, Longview, WA 98632-0310. Periodicals postage paid at Longview, WA and at additional mailing offices.

**POSTMASTER:**

**Send address changes to Lower Columbia College, 1600 Maple Street, Longview, WA 98632-0310.**

# ABOUT US



## Our Programs

- 2 Bachelor of Applied Science (BAS) Degrees
- 66 Associate Degrees
- 27 Professional Certificates
- 8 Career Pathways



## Our Faculty

- 13:1 Student-Faculty Ratio
- 70 Full-time Faculty
- 99 Adjunct Faculty



## We Also Offer

- ✓ High School Completion
- ✓ Precollege Math and English
- ✓ English Language Learning
- ✓ Continuing Education



## Our Students

- 4,000 Students per Year
- 28% Students of Color
- 29 Average Age

## ALUMNI SPOTLIGHT



Arts, Communication  
and Humanities

### Glenn John Cervantes Class of 2018

Glen John Cervantes is a Program Coordinator at Genesys Works in Chicago, a nonprofit organization dedicated to providing pathways to success for high school students in underserved communities. After receiving an associate degree from LCC, John Glen earned a Bachelor of Arts in Anthropology from Willamette University.



# ENROLLING AT LCC

## New Students – Getting Started

**Connect:** [lowercolumbia.edu/connect](https://lowercolumbia.edu/connect)

Meet up with our Outreach team to take a campus tour and receive personal guidance through the admissions process.

**Apply:** [lowercolumbia.edu/apply](https://lowercolumbia.edu/apply)

At LCC, there are no application fees or minimum academic requirements for admission. Just fill out our online form, and you're in!

**Onboard:** [lowercolumbia.edu/welcome](https://lowercolumbia.edu/welcome)

Before you can meet with an advisor to register for classes, you'll need your Student ID Number (provided after you apply for admission), have math and English placement (LCC has multiple placement options), and take care of other details.

### Paying for College

All incoming students are encouraged to apply for Financial Aid through the FAFSA or WASFA to access multiple types of assistance including grants, loans, work-study jobs, scholarships and more.

Visit [lowercolumbia.edu/aid](https://lowercolumbia.edu/aid) for details.

Have questions? Contact our Outreach Team at [outreach@lowercolumbia.edu](mailto:outreach@lowercolumbia.edu) or 360.442.2610. We look forward to seeing you soon!

**Non-credit classes:** see page 14 for more information about Continuing Education classes.

• • • • •

Purchase your textbooks from the LCC Bookstore by visiting [bookstore.lowercolumbia.edu](https://bookstore.lowercolumbia.edu)

## Current Students – How to Register

1. Visit the **ctcLink mobile website** at [wa130.ctclink.us](https://wa130.ctclink.us). Select the **ctcLink Login tile** and **login using your ctcLink ID number** and password. Once you are logged in, you will see the ctcLink mobile dashboard.
2. **Find out your earliest registration date/time** by selecting **Enrollment** from the left navigation list, then select the **Enrollment Dates** option. Choose a quarter, if more than one is displayed.
3. **Communicate with your program advisor** to review your academic plan and plan your class schedule. To find your advisor's information, log into ctcLink. Select **Enrollment** from the left navigation list, then select **Advisor Information**. If an advisor has been assigned to you, their information will be displayed here. You can email your advisor by selecting the envelope icon.
4. **Register for classes** online in ctcLink. From the ctcLink mobile dashboard, select **Class Information** from the left menu and then select **Class Search**. Enter search criteria, select a class section and then select **Enroll**. Students taking more than 18 credits must contact Registration for assistance.
5. **Pay your tuition and fees** by the deadline listed on the Academic Calendar online. You may pay online with a credit or debit card using ctcLink. From the ctcLink mobile dashboard, select the **Financials** icon from the sidebar menu, select **What I Owe**, then select **Make a Payment**. You can also pay in person, when the campus is open, at the Cashier. Tuition payment plans are available. Learn more about the tuition payment plan at [lowercolumbia.edu/payment-plan](https://lowercolumbia.edu/payment-plan).

### Class Full?

Select "yes" during online registration to get on a waitlist.



# DATES & DEADLINES

Veterans/Dependents Priority Registration begins .....	November 6
Priority registration for winter quarter begins .....	November 13
Open registration for winter quarter begins .....	November 20
Priority application deadline for winter financial aid .....	November 20
Winter quarter tuition due .....	December 11
First day of classes .....	January 3
Last day of online registration.....	January 5
Instructor permission required to add a course.....	January 6
Last day for 100% tuition refund .....	January 9
Martin Luther King Day Holiday.....	January 15
Last day to withdraw and avoid a "W" .....	January 17
Last day for 50% tuition refund .....	January 22
Last day to apply for winter quarter graduation .....	January 26
Presidents' Day Holiday .....	February 19
Last day to withdraw from classes .....	February 23
Last day of winter quarter classes .....	March 8
Winter quarter finals* .....	March 11-14

The FINAL EXAM SCHEDULE is located at  
**[lowercolumbia.edu/classes/finals.php](http://lowercolumbia.edu/classes/finals.php)**



# ONLINE & REGISTRATION SERVICES

You can do virtually everything online at LCC: register for classes, apply for aid and scholarships, make payments, check schedules and grades, and more.

Learn more at [lowercolumbia.edu/online-services](https://lowercolumbia.edu/online-services)

## ctcLink

Many online services are available in ctcLink, our primary operating system. Your ctcLink (student) ID number comes in the welcome email you receive after applying. Activate your account online in minutes.

Learn more at [lowercolumbia.edu/ctcLink](https://lowercolumbia.edu/ctcLink)



## Virtual Welcome Center

Need help without coming to campus?

Visit us online at [lowercolumbia.edu/virtual](https://lowercolumbia.edu/virtual)

***Congratulations, you're in at LCC!***

There are no fees, essays or test scores required to apply.  
Just fill out an online form, and you're in!

Get started today at [lowercolumbia.edu/apply](https://lowercolumbia.edu/apply)



# Start Next Quarter



***Find out if you qualify for special funding!***

Take the 10-minute survey at [startnextquarter.org](https://startnextquarter.org) to find out if you might qualify for programs that help cover college expenses.

Learn more at [startnextquarter.org](https://startnextquarter.org)

# PAYING FOR COLLEGE



## Financial Aid

[lowercolumbia.edu/financial-aid](https://lowercolumbia.edu/financial-aid)

There are two different application forms for financial aid. The **FAFSA** is for U.S. citizens and permanent residents of the U.S. The **WASFA** is for people who are ineligible for federal financial aid due to immigration status.

## Basic Food, Employment & Training (BFET)

[lowercolumbia.edu/bfet](https://lowercolumbia.edu/bfet)

Students who are eligible for federal basic food benefits may be eligible for BFET support.

## Opportunity Grant

[lowercolumbia.edu/opportunity-grant](https://lowercolumbia.edu/opportunity-grant)

Unemployed or underemployed adults seeking a certificate or degree in a high demand career field may be eligible for an Opportunity Grant.

## Scholarships

[lowercolumbia.edu/scholarships](https://lowercolumbia.edu/scholarships)

Fill out a single application form to be considered for everything LCC has to offer. The application cycle is usually open from February through April.

## Tuition & Fees

[lowercolumbia.edu/tuition](https://lowercolumbia.edu/tuition)

Visit us online for more information about current tuition and fee rates.

## Tuition Payment Plan

[lowercolumbia.edu/payment-plan](https://lowercolumbia.edu/payment-plan)

Pay your tuition and fees in smaller, more convenient monthly installments.

## Veterans' Services

[lowercolumbia.edu/veterans](https://lowercolumbia.edu/veterans)

LCC offers approved educational programs to eligible veterans and dependents of deceased or totally disabled veterans under Title 38 and Title 10, U.S. Code.

## Washington College Grant

[lowercolumbia.edu/free-college](https://lowercolumbia.edu/free-college)

Finally, a guaranteed state need grant for middle- and low-income families. Just fill out the FAFSA or WASFA to see if you qualify to attend college for free.

## WorkFirst

[lowercolumbia.edu/workfirst](https://lowercolumbia.edu/workfirst)

Through referral from the Department of Social and Health Services, WorkFirst supports parents receiving Temporary Assistance for Needy Families (TANF).

## Worker Retraining

[lowercolumbia.edu/worker-retraining](https://lowercolumbia.edu/worker-retraining)

Worker Retraining is a state-funded program to help dislocated and unemployed workers retrain for a new career.

**For more info about paying for your education, visit [lowercolumbia.edu/types-of-aid](https://lowercolumbia.edu/types-of-aid)**

## COLLEGE & CAREER PREPARATION

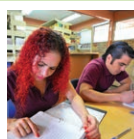
Only \$25 a quarter | Financial help available | Start anytime

### WHAT WE OFFER

- High School Diploma
- English Language Learning
- College math & English prep
- Assistance with computer skills
- Support in Spanish
- Online & in-person options
- Flexibility - start anytime!
- Low-cost classes

Start a certificate or degree program right away with Integrated Basic Education and Skills Training (I-BEST), even if you're not ready for college level math and/or English. Don't have a high school diploma or GED? You may qualify for federal financial aid with the Ability to Benefit program.

[lowercolumbia.edu/ccp](https://lowercolumbia.edu/ccp) | 360.442.2580



# ALL ABOUT BOOKS

## Need to purchase your textbooks? The LCC Bookstore makes it easy!

Visit the Bookstore online at [bookstore.lowercolumbia.edu](http://bookstore.lowercolumbia.edu) to purchase your textbooks.  
If you have a Financial Aid book voucher, apply it directly online. It's super easy!  
You may have your books shipped to you, or set for in-store pick up.

### EVERYTHING you need to be ready for class!



### BUY YOUR BOOKS ONLINE

- Textbooks ordered during the first two days of class may take two additional days to process
- Options available for purchasing Online: Ship textbooks directly to you or pick-up in store

We accept:



[bookstore.lowercolumbia.edu](http://bookstore.lowercolumbia.edu)



### What is the Red Devil Rewards Program?

The program allows you to earn points on every purchase at the LCC Bookstore, whether online or in store. Points are redeemable for credit towards future purchases... the more you buy, the more you save!  
**\$1 = 1 point**

More info on  
the Bookstore  
website

### CLASSES THAT USE FREE OR INEXPENSIVE TEXTBOOKS

Visit [lowercolumbia.edu/classes](http://lowercolumbia.edu/classes) to access the list, or search for "Low-Cost Textbooks" or "OER - No Textbook to Purchase" under "Course Attributes" in the online schedule.



**RIDE FREE**  
with LCC Student ID!  
[lowercolumbia.edu/bus](http://lowercolumbia.edu/bus)



# FINDING YOUR PATH

**Short-term certificates | Associate & Bachelor's Degrees**  
**[lowercolumbia.edu/programs](http://lowercolumbia.edu/programs)**



## **Accounting, Business & Leadership**

Accounting, Administrative Services, Business, Leadership & Management, Medical & Office occupations



## **Arts, Communication & Humanities**

Communication Studies, Drama, English, Fine Arts, Graphic Design, Humanities, Music



## **Health Sciences & Wellness**

Nursing and Nursing Assistant, Medical Assisting, Health & Fitness, Substance Use Disorder Studies



## **Information Technology**

Information Technology Systems (see Science, Technology, Engineering & Math for Computer Science)



## **Manufacturing, Trades & Transportation**

Automotive, Commercial Truck Driving, Diesel/Heavy Equipment, Machine Trades, Manufacturing, Welding



## **Science, Technology, Engineering & Math**

Biology, Chemistry, Computer Science, Earth Science, Engineering, Environmental Science, Physics



## **Social Science & Criminal Justice**

Anthropology, Criminal Justice, Economics, History, Philosophy, Political Science, Pre-Law, Psychology, Sociology




## **Teacher Education & Early Learning**

Early Childhood Education, Paraeducator, Education, Math Education, Teacher Education

# STUDENT RESOURCES & SERVICES

LCC offers a wide array of resources and services to help students succeed in college. Visit [lowercolumbia.edu/services](http://lowercolumbia.edu/services) to learn more about our Student Services, Campus Life, and Academic Resources.

Student Services	Campus Life	Academic Resources
<ul style="list-style-type: none"><li>• Advising</li><li>• Career &amp; Employment</li><li>• Cashier</li><li>• Childcare</li><li>• Counseling</li><li>• Disability &amp; Access Services</li><li>• Financial Aid</li><li>• Food Pantry</li></ul>	<ul style="list-style-type: none"><li>• iGrad Money Management</li><li>• Online Services</li><li>• Payment Plan</li><li>• Placement Testing</li><li>• Scholarships</li><li>• TRIO Student Support</li><li>• Veterans Services</li><li>• Worker Retraining</li></ul>	<ul style="list-style-type: none"><li>• Arts &amp; Entertainment</li><li>• Bus Transportation</li><li>• Café &amp; Dining</li><li>• Campus Activities</li><li>• Clubs &amp; Organizations</li><li>• Gym &amp; Fitness Center</li><li>• Safety &amp; Security</li><li>• Student Employment</li><li>• Student Government</li></ul>
		<ul style="list-style-type: none"><li>• Academic Calendar</li><li>• Computer Labs</li><li>• eLearning</li><li>• Library/Learning Commons</li><li>• Test Proctoring</li><li>• Tutoring</li></ul>






## ONLINE LEARNING @ LCC

We offer fully online and hybrid (partially online and partially on-campus) classes. Visit [lowercolumbia.edu/classes](http://lowercolumbia.edu/classes) and select “On-line” under “Instruction Mode” in the online schedule.

LCC’s online learning management system is Canvas. Need help with Canvas? Schedule a tutoring session through the Learning Commons at 360.442.2572 or contact eLearning at 360.442.2520.


## DIVERSITY CLASSES

Visit [lowercolumbia.edu/classes](http://lowercolumbia.edu/classes) to access the current online schedule. Under search options, select “LCC Defined Attributes” in the “Course Attributes” field to see a list of search items, including diversity classes and classes that meet other distribution requirements.



If you are a veteran who has served in the armed forces and are attending LCC, you are invited to join our Veteran Alliance Organization.

LCC also has a Vet Corps Navigator onsite, as well as a Veterans’ Center on the first floor of the Student Center.



Washington State

Learn more at [lowercolumbia.edu/veterans](http://lowercolumbia.edu/veterans)

# ARTS & ENTERTAINMENT

## ROSE CENTER FOR THE ARTS



### ART GALLERY

*Visit our website  
for all upcoming  
exhibits:*

**lowercolumbia.edu/  
gallery**

*Stay tuned for news about  
exciting new performances  
from LCC's performing  
arts students.*

*More details to come!*

**lowercolumbia.edu/aande**

### Volunteers Wanted

ROSE CENTER FOR THE ARTS

**If interested, please  
contact the Rose Center  
at 360.442.2512 or  
rca.events@lcc.ctc.edu**

WINTER 2024 CENTER STAGE

### AUDITIONS

#### **The Book Club Play**

by Karen Zacarías, directed by Betsy Richard

#### **Performance Dates:**

February 23, 24, 29, & March 2 at 7:30 p.m.;  
February 25 at 2 p.m.; March 1 at 11:00 a.m.

#### **Auditions:**

**January 3 & 4, 3-6:30 p.m.  
in Center Stage Theater**

**lowercolumbia.edu/drama/auditions**

# BACHELOR'S AND BEYOND

## University Center

### Bachelor's and graduate degrees on the LCC campus

LCC now offers bachelor's degrees! Access LCC's bachelor's degree programs and dozens of other bachelor's and graduate degree programs through LCC's University Center, a unique collaboration between LCC and partner universities.

**LCC Library Building**  
**360.353.7800**  
**[lowercolumbia.edu/u-center](https://lowercolumbia.edu/u-center)**



## Earn a Bachelor of Applied Science degree at LCC

Are you ready to take your career to the next level? LCC now offers a Bachelor of Applied Science in Teacher Education (BAS-TE) and a Bachelor of Applied Science in Organizational Leadership and Technical Management (BAS-OLTM). These programs were created with busy, working adults in mind. Visit our website for application and other important information.

**[lowercolumbia.edu/bas](https://lowercolumbia.edu/bas)**



## Study Abroad with LCC!

- Summer in South Korea
- Fall in Japan or France
- Winter in Australia / New Zealand
- Spring in Germany

**For details visit**  
**[lowercolumbia.edu/international](https://lowercolumbia.edu/international)**



# FOR HIGH SCHOOL STUDENTS

## Running Start Program

**Tuition-free college for high school students**

**Running Start** is a statewide program that lets eligible high school juniors and seniors take college classes tuition-free. Students can attend part- or full-time, and can continue to participate in high school activities such as sports.



[lowercolumbia.edu/running-start](http://lowercolumbia.edu/running-start) • 360.442.2442

## GraduationPlus

In today's economy, you need a *high school diploma plus a college credential* to earn a living wage!



- Credits you earned in high school may also count toward a college credential.
- About 70% of job openings in Washington require at least some education beyond high school.
- Earning a two-year degree can **boost lifetime earnings by \$324,000** (on average) over a high school diploma alone.

**Learn more at [lowercolumbia.edu/graduation-plus](http://lowercolumbia.edu/graduation-plus)**



# CORPORATE & CONTINUING ED

Corporate and Continuing Education supports the college's mission by providing opportunities for individuals, businesses, and organizations to pursue their personal, professional, and corporate training goals. Contact us to discuss customized options!



SCAN ME

to see our class schedule  
and to register for  
*Winter Classes!*



### Career Training Programs

Online courses and career training programs prepare you for a new career, or help you advance within your current occupation. Learn new skills and prepare for industry-recognized certifications. We offer 240+ quick certificates to jump start your new career! Check out a list of all our programs at [careertraining.ed2go.com/lccbic](http://careertraining.ed2go.com/lccbic).

Continuing Education offers more than 300 online courses and programs. Visit [www.ed2go.com/lccbic](http://www.ed2go.com/lccbic) or email [ehoff@lowercolumbia.edu](mailto:ehoff@lowercolumbia.edu) for more info. Online career training is available at [careertraining.ed2go.com/lccbic](http://careertraining.ed2go.com/lccbic).

### Classes available in:



Arts & Culture



Business & Innovation



Computers & Technology



Health & Wellness



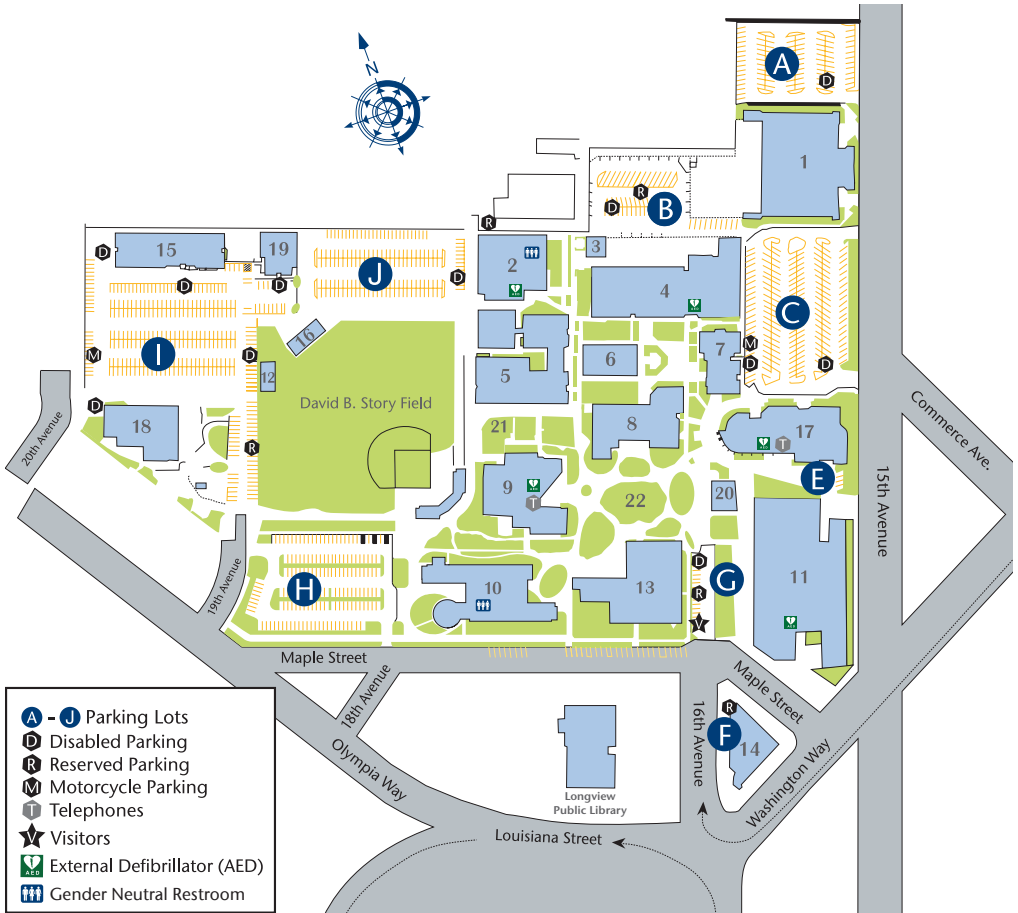
Travel & Outdoors



Workforce Training

**View classes and register online at [lowercolumbia.edu/ce](http://lowercolumbia.edu/ce) or email [ehoff@lowercolumbia.edu](mailto:ehoff@lowercolumbia.edu) for more information.**

# LCC CAMPUS MAP



- 1. Don Talley Building (DTV)**
- 2. Gym & Fitness Center (GYM)**
- 3. Steam Plant (SPL)**
- 4. Vocational Building (VOC)**
- 5. Applied Arts Building (AAR)**
- 6. Science Building (SCI)**
- 7. Physical Science Center (PSC)**
- 8. Admissions Center (ADC)**
  - Career Services
  - Cashiers
  - Disability & Access Services
  - Financial Aid
  - Registration
  - Student IDs
  - Testing Center
- 9. Library- Alan Thompson (LIB)**
  - eLearning
  - Regional University Center
  - Tutoring Center
- 10. Health and Science Building (HSB)**

- 11. Rose Center for the Arts (RCA)**
- 12. International Center (INC)**
- 13. Main Building (MAN)**
- 14. Administration Building (ADM)**
- 15. Head Start/Home & Family Life (HFL)**
- 16. Batting Barn (BTB)**
- 17. Student Center (STC)**
  - Bookstore
  - Dining
  - Security Office
  - Student Activities Office
- 18. Campus Services Building (CMS)**
- 19. Head Start East Building (HSE)**
- 20. Pavilion**
- 21. Learning & Healing Garden**
- 22. The Quad**

**Note:** Buildings are not physically numbered. The numbers on this map are for key purposes only. Parking permits are required in all lots.



1600 Maple Street  
PO Box 3010  
Longview, WA 98632-0310

PERIODICALS

## WSS CAR-RT PRESORT RESIDENTIAL CUSTOMER

### Look inside and start planning your next chapter.

Whether you're starting a career, looking for a promotion, transferring to a university or just want to learn something new, LCC offers high quality, affordable education right here in the community.

- New & Noteworthy - page 2
- About Us - page 3
- Enrolling at LCC - page 4
- Dates & Deadlines - page 5
- Online/Registration - page 6
- Paying for College - page 7
- College & Career Prep - page 7
- Bookstore Information - page 8
- Career Pathways - page 9
- Student Resources - page 10
- Arts & Entertainment - page 11
- Bachelor's & Beyond - page 12
- High School Students - page 13
- Corporate & Continuing Education - page 14
- Campus Map - page 15

### Launch your career quickly with a short-term credential from LCC

Certificates available in the trades,  
healthcare, business, truck driving,  
education, and more.

Apply for free @  
[lowercolumbia.edu/apply](https://lowercolumbia.edu/apply)



Asistencia en Español @ [lowercolumbia.edu/espanol](https://lowercolumbia.edu/espanol)

[lowercolumbia.edu](https://lowercolumbia.edu)



LCC is an AA/EEO employer - [lowercolumbia.edu/aa-ee](https://lowercolumbia.edu/aa-ee)  
LCC Clery Annual Security and Fire Safety Report available at [lowercolumbia.edu/CleryASFR](https://lowercolumbia.edu/CleryASFR)