



LOWER COLUMBIA COLLEGE

The Smart Choice!

WINTER 2019 CLASS SCHEDULE



WINTER CLASSES BEGIN JANUARY 7

What's Inside: Arts & Entertainment Events at LCC on Page 24

What's New

Coming Events	24
Dates & Deadlines	4
Diversity Classes	14
Final Exam Schedule	14
Online Learning	12
Special Funding Options	13

How to Enroll

Bookstore Information	11
Campus Map	47
College Services Information	46
Financial Aid	7
Registration	4-5
Tuition & Fees	6

Class Listings

Accounting	15
Allied Health	15
American Sign Language	15
Anthropology	15
Art	15
Astronomy	16
Automotive Technology	17
Biology	17

Blueprint Reading	18
Business Administration	18
Business Technology	18
Chemical Dependency	19
Chemistry	19
College Success	20
Communication Studies	20
Computer Science	20
Cooperative Education	21
Criminal Justice	21
Diesel/Heavy Equipment	21
Technology	21
Drama	22
Early Childhood Education	22
Earth Science	22
Economics	22
Education	22
Engineering	23
English	23
Environmental Science	26
Geography	26
Geology	26
Health	26
History	26
Humanities	27

Information Technology	27
Integrative Studies	27
Machine Trades	28
Manufacturing	29
Mathematics	29
Medical Assisting	30
Music	30
Nursing	31
Nutrition	32
Oceanography	32
Philosophy	32
Physical Education	32
Physics	33
Political Science	33
Process Manufacturing	33
Psychology	34
Sociology	34
Spanish	34
Welding Technology	35
Adult Basic Education	36
Continuing Education	38

LCC Office Hours

Regular Hours:

Monday–Friday, 8 a.m.–5 p.m.

Registration and Entry Center –

Monday–Friday.....8 a.m.–5 p.m.

Cashiering –

Monday–Friday.....8:15 a.m.–4:30 p.m.
(Closed 1-1:30 p.m. for lunch)

Financial Aid hours are the same as Registration, except Wednesdays, when staff are only available from 11 a.m. until 2 p.m.

Student staff can provide limited assistance the rest of the day. Limited help hours give professional staff uninterrupted time to process aid requests and do necessary federal and state reporting.

Equal Opportunity, Affirmative Action, and Reasonable Accommodation

Lower Columbia College offers over 70 associate degree and certificate options in a variety of fields, providing a rich complement of technical/professional, basic skills, and continuing education programs. Degree or certificate seeking students must apply for program admission and register in the degree or certificate program. The College will take steps to ensure that lack of English language skills will not be a barrier to admission or participation in vocational education programs.

The College provides equal opportunity in education and employment and does not discriminate on the basis of race, color, national origin, age, perceived or actual physical or mental disability, pregnancy, genetic information, sex, sexual orientation, gender identity, marital status, creed, religion, honorably discharged veteran or military status, or use of a trained guide dog or service animal as required by Title VI of the Civil Rights Act of 1964, Title VII of the Civil Rights Act of 1964, Title IX of the Educational Amendments of 1972, Sections 504 and 508 of the Rehabilitation Act of 1973, the Americans with Disabilities Act and ADA Amendment Act, the Age Discrimination Act of 1975, the Violence Against Women Reauthorization Act and Washington State's Law Against Discrimination, Chapter 49.60 RCW and their implementing regulations.

The following person has been designated to handle inquiries regarding non-discrimination, equal opportunity, affirmative action or the ADA policies or for Title IX/504 compliance issues: Director of Human Resources & Legal Affairs, 1600 Maple Street, Longview, WA 98632, Phone number, 360.442.2120, Phone number/TTY 800.833.6388.

The College publications are available in alternate formats upon request by contacting the Disability Support Services at 360.442.2340.

About This Schedule:

Every effort is made to ensure that the information in this course schedule is accurate at the time of publication. The College reserves the right to change its class offerings as necessary. For the latest information, please check the online class schedule at lowercolumbia.edu/classes

LCC mails class schedules to all households in Cowlitz County four times each year to inform residents about college programs and services. Because they are addressed to "Residential Customer," we are unable to remove individuals from our distribution route. Schedules can be recycled with your newspapers.

Volume 11, No. 1, Winter 2019. LCC Class Schedule (USPS 025-007) is published four times a year (November, February, April and June) by Lower Columbia College. The Lower Columbia College Office of Effectiveness & College Relations is located at 1600 Maple Street, Longview, WA 98632-0310. Periodicals postage paid at Longview, WA and at additional mailing offices.

POSTMASTER: Send address changes to Lower Columbia College, 1600 Maple Street, Longview, WA 98632-0310.

New! Fully Online Business Transfer Degree

Did you know that you can earn an Associate in Business DTA/ MRP (transfer degree) by taking all online classes? This fully online option is perfect for people with work or family commitments, and others who just don't want to travel to the LCC campus every day.

The Associate in Business degree is for students planning to transfer to a university in Washington. Management, accounting, marketing, finance, operations management, and human resources are some of the specializations available for those pursuing advanced studies.

Learn more at lowercolumbia.edu/business.



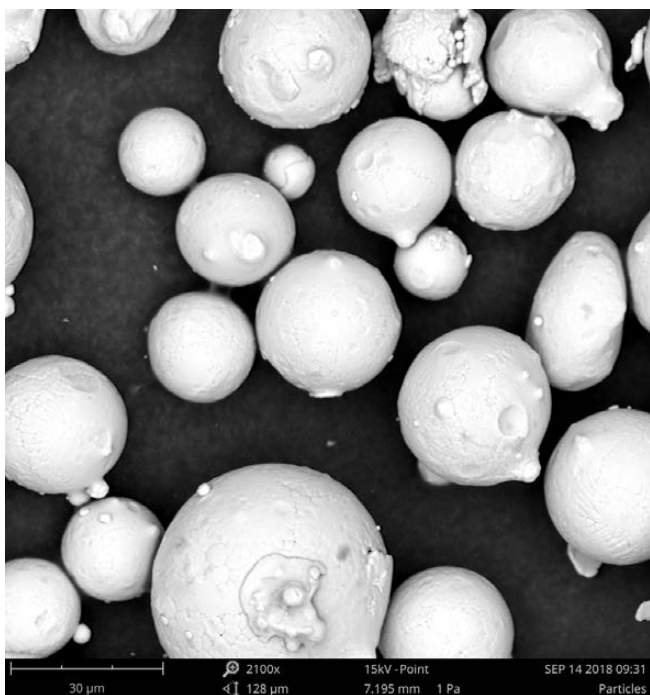
Meet the Faculty

We are pleased to welcome three new tenure-track faculty this year!

Kali Brandt – Nursing Instructor. Kali's academic credentials include an Associate of Applied Science in Nursing from LCC, a Bachelor of Science in Nursing from Grand Canyon University, and a Master of Science in Nursing Education from Western Governors University. In addition, Kali has been a Registered Nurse for the past 10 years.

Holly Brewster – Math Instructor. Holly's credentials include a Bachelor of Arts in Mathematics & Philosophy from Colby College, a Master of Education in Leadership & Policy Studies from the University of Washington, and a Doctor of Philosophy in Education from Teachers College, Columbia University.

Joanna Mosser – Political Science Instructor. Joanna's credentials include a Master of Arts in Political Science, a Master of Philosophy in Political Science, and a Doctor of Philosophy in Political Science from Yale University.



LCC Gets High-Tech Microscope

Thanks to a new high-tech scanning electron microscope (SEM), students can now see samples magnified up to 100,000 times their actual size. This cutting-edge technology was purchased through grant funds provided by the United States Economic Development Administration and the Lower Columbia College Foundation. Sign up for BIOL 211, BIOL 213, CHEM 161, CHEM 162, CHEM 163 or ENVS 215 to use the new microscope during lab activities.

LCC's Health and Science Building contains a lot of other high-tech equipment as well, including a real-time PCR, fluorescent cell imager, and a portable hand-held XRF. Sign up for a biology or environmental science class with instructor **Louis LaPierre** to learn more about these amazing pieces of equipment!

HOW TO REGISTER

Go to lowercolumbia.edu/enrollment to access the following steps

New Students

Registration begins November 19 for new students. Apply for admission, there is no fee to apply: lowercolumbia.edu/apply. If needed, staff assistance and computers are available in the Admissions Center.

1. Apply for admission

Online or in person at the Registration Office.

2. Apply for financial aid, if needed.

Go to lowercolumbia.edu/finaid for instructions and forms. More information on page 7.

3. Determine your program

Visit the Career Center to take an interest assessment, explore careers, and access career resources. The results will help you choose a program leading to a career that is right for you. At the Center, or from your own computer, print out a copy of the program planner(s) for the program(s) of study that interest you. Go to lowercolumbia.edu/programs.

4. Practice and take a placement test

Students who plan to earn a degree or certificate from Lower Columbia College, or who plan to transfer to a four-year institution, can use multiple measures for the purpose of determining English and Math placement. Placement options include, but are not limited to, Directed Self-Placement, Smarter Balanced scores, High School transcripts, and previous college course work. Placement assessments are offered in the Admissions Center testing lab, open 10 a.m.- 5 p.m. Mon–Thurs. More information is available at lowercolumbia.edu/placement.

5. Attend New Student Orientation & Register

Sign up at the Admission Center Testing Lab to attend a New Student Orientation. Prepare by previewing the online class schedule, and bring your placement testing scores and program planner(s) for any areas of study that interest you. We also recommend that you map out a schedule of when you are available for classes and studying.

6. Pay your tuition and fees

Tuition is due the Tuesday before classes begin. You may pay online with a credit or debit card or in person at the Cashier in the Admissions Center. If you need more time to pay, see Delayed Tuition Payment options on page 7.

Non-credit classes:

Continuing Education class listings and registration information begin on page 38.

Class Full? Get on the Waitlist!

Students may be added to the waitlist through the end of the day, Friday December 14. If openings occur through the third day of the quarter (January 9), you'll be automatically moved from the waitlist into the class. Only students on the waitlist may fill open seats.

Being on the waitlist does not guarantee that you'll get in, or that a new section will be made available. Tuition and fee charges will not include waitlisted classes until you are registered in them. Please stop by the Registration office to remove yourself from a waitlist if you are no longer interested in being enrolled in a class. Check your waitlist status at lowercolumbia.edu/online-services.

Current Students

Registration begins November 13 for students who have attended LCC within the last quarter.

1. Find out your earliest registration date/time

online at lowercolumbia.edu. Student ID Number and Global PIN required.

2. Meet with your program advisor

to plan your class schedule and get your Quarterly Registration PIN. If you have not received an email listing your program advisor, contact the Entry Center.

3. Register

online or in person at Registration. Students taking more than 18 credits must register in person.

4. Pay your tuition and fees

by the deadline listed on the Academic Calendar online. You may pay online with a credit or debit card or in person at the Cashier. See Delayed Tuition Payment options on page 7.

Which PIN Do You Need?

Global PIN—Received from Registration. Use to log in for most online services.

Quarterly Registration PIN—Received from your advisor before priority registration; also online during open registration. You need a new one each quarter to register for classes.

Winter Dates and Deadlines

Veterans/Dependents Priority Registration begins.....	Nov. 9
Priority registration for Winter begins	Nov. 13
Admission deadline for degree/certificate students.....	Nov. 19
Open registration for Winter begins.....	Nov. 19
Application deadline for Winter financial aid.....	Nov. 19
Last day for Winter Administrative Hold	Dec. 10
Last day to be added to a waitlist.....	Dec. 14
Winter tuition payment due.....	Dec. 31
First day of classes	Jan. 7
Last day of online registration	Jan. 9
Instructor permission required to add a course.....	Jan. 10
Last day for 100% tuition refund.....	Jan. 11
Last day to withdraw and avoid a "W"	Jan. 18
Martin Luther King Day Holiday.....	Jan. 21
Last day for 50% tuition refund.....	Jan. 25
Last day to apply for Winter graduation	Jan. 29
Presidents' Day Holiday	Feb. 18
Last day to withdraw from classes.....	March 1
Last day of Winter classes.....	March 15
Winter finals	March 19-21

Cashier, the Entry Center, Financial Aid, Advising, Registration, and Testing are located in the Admissions Center. Questions? Contact the Entry Center, entry@lowercolumbia.edu, phone 360.442.2311 or toll-free 1.866.900.2311.

ONLINE REGISTRATION & PAYMENT

Go to lowercolumbia.edu/online-services to access the following steps

1. Check Your Registration Date and Time

Using the Online Services page, choose “get my registration time.” Log in with your Student ID Number and Global PIN. Schedule an appointment and meet with your Program Advisor 1-2 weeks before you register to select your classes and receive your Quarterly Registration PIN.

2. To Register Online

Besides your class list, you’ll need your Student ID Number and Quarterly Registration PIN. For classes that require instructor permission, you’ll need an Entry Code from the instructor of the class.

Select *Register for my classes*. Follow the instructions and complete your schedule. Don’t forget to print your schedule before you leave. If you attempt to register for two classes that meet at the same time or overlap, you will receive a warning message regarding the time conflict.

3. Pay Your Tuition or Set Up a Payment Plan Online!

Paying online is easy and secure. You can use your credit or debit card to pay in full, or set up an automatic payment plan. If you register online, you can pay at the end of your registration session or return later. See *Delayed Tuition Payment Options*, page 7.

If you register in person, you can still pay online. You’ll need your Global PIN, received when you register for the first time.

Tuition is due the Tuesday before classes begin.

4. Add or Drop Classes

You may add or drop classes online through the third day of class. Select *Register Online*. Follow the instructions for adding or dropping a class. Don’t forget to print a copy of your revised schedule. You can also handle any adjustments to your tuition or fees online.

ONLINE REGISTRATION WORKSHEET

Dept.	Course #	Item #	Section	Credits	M	T	W	Th	F	Time	Bldg/Rm	Entry Code

Alternate Classes

When can’t I use Online Registration?

1. Continuing Education courses
2. GED/ABE/ESL courses
3. High School Completion
4. Independent Studies
5. Employee waivers, Running Start, or National Guard waivers
6. If you last attended LCC more than one year ago
7. If you are taking more than 18 credits

Online Registration is available

November 13-January 9

Entry Codes

An Entry Code is a five digit random number issued to students by the instructor of the class as authorization to register for classes requiring “Instructor Permission.” Once you have used an entry code, the registration computer will not accept it again.



Use Online Services

Here are some of the things you can do online:

- Pay your tuition and fees
- Set up a payment plan
- Check tax credit information
- Change your Global PIN
- Print your class schedule
- Print out an unofficial transcript
- Check waitlist status

TUITION & FEES

Resident Students (Column A)

Washington resident students must verify that they have lived in Washington for one year and have established residency in the State of Washington, including US Citizenship, permanent resident status, hold an A, E, G, H, I, K or L visa or have “refugee/asylum” status. If your residency cannot be determined at the time of admission, your tuition and fees will be calculated at the non-resident tuition and fee rate. Ask about residency at the Registration Office, 360.442.2370. Complete residency rules are detailed in RCW 28B.15.012.

Even if you are not a permanent resident or US Citizen, you may still qualify to pay in state tuition if you have:

- Resided in Washington state for the three (3) years immediately prior to receiving a high school diploma, and completed the full senior year at a Washington high school, OR completed the equivalent of a high school diploma (GED) and resided in Washington state for the three (3) years immediately before receiving the equivalent of the diploma; and
- Continuously resided in the State since earning the high school diploma or its equivalent.

If you are eligible, complete the HB 1079 affidavit (Washington Higher Education Affidavit/Declaration/Certification form), available in the Registration office in the Admission Center. The original should be submitted to the Lower Columbia College Registration office. Contact the Registrar at 360.442.2372 for additional information.

Oregon Border County Residents (Column B)

Residents of Oregon Border Counties (Columbia, Clatsop, Multnomah, Washington) for 90 days or more may pay this rate.

Non-Residents (Column C)

Individuals who have lived in the State of Washington for 90 days or more and who are US Citizens or Permanent Residents, as defined by the INS, may pay this rate.

International Students (Column D)

Those who are not eligible to pay the “Resident Students,” “Oregon Border County Residents,” or “US Citizens and INS Permanent Residents” rates, above, pay this rate. (See Column D.)

Veterans (Column E)

Special rates are available for some Veterans. Visit the Veterans’ Office in the Student Center or see lowercolumbia.edu/veterans for details.

Special Rates for Senior Citizens

If space is available after the first class meeting, Washington residents 60 or older may audit up to two classes for \$2.50 per class plus \$1.60 per credit facilities use fee, \$3.00 per credit technology fee and applicable lab fees.

2018-2019 Tuition and Fee Schedule					
(Facilities Use, Technology, Tutor Center, Fitness Center Upgrade fees included)					
# Cr.	A WA State Residents	B OR Border Residents	C Non-Residents	D International Students	E Veterans
1	116.69	125.19	129.44	294.11	95.44
2	233.38	250.38	258.88	588.22	190.88
3	350.07	375.57	388.32	882.33	286.32
4	466.76	500.76	517.76	1,176.44	381.76
5	583.45	625.95	647.20	1,470.55	477.20
6	700.14	751.14	776.64	1,764.66	572.64
7	816.83	876.33	906.08	2,058.77	668.08
8	933.52	1,001.52	1,035.52	2,352.88	763.52
9	1,050.21	1,126.71	1,164.96	2,646.99	858.96
10	1,166.90	1,251.90	1,294.40	2,941.10	954.40
11	1,224.76	1,314.04	1,358.68	3,006.18	1,001.57
12	1,282.62	1,376.18	1,422.96	3,071.26	1,048.74
13	1,337.48	1,435.32	1,484.24	3,133.34	1,092.91
14	1,392.34	1,494.46	1,545.52	3,195.42	1,137.08
15	1,447.20	1,553.60	1,606.80	3,257.50	1,181.25
16	1,502.06	1,612.74	1,668.08	3,319.58	1,225.42
17	1,556.92	1,671.88	1,729.36	3,381.66	1,269.59
18	1,611.78	1,731.02	1,790.64	3,443.74	1,313.76
19	1,708.31	1,837.20	1,901.65	3,717.69	1,386.16
20	1,804.84	1,943.38	2,012.66	3,991.64	1,458.56
21	1,901.37	2,049.56	2,123.67	4,265.59	1,530.96
22	1,997.90	2,155.74	2,234.68	4,539.54	1,603.36
23	2,094.43	2,261.92	2,345.69	4,813.49	1,675.76

Miscellaneous Fees for 2018-19

- **Apprenticeship:** \$54 per credit; \$3.60 per clock hour.
- **Computer Lab:** A fee of \$27.10 per class is charged for certain classes identified in the course listing.
- **Facilities:** The chart includes a fee of \$1.60 per credit (up to 18 credits) for facilities maintenance and College security.
- **Fitness Center Upgrade:** The chart includes a fee of \$2.50/credit (up to 10 credits) for fitness center upgrade.
- **Fitness Center Use:** \$20 per student/per quarter.
- **GED Testing:** \$120 for first time on all four. Re-testing: \$30 per test.
- **High School Completion:** Students taking courses to earn a high school diploma are charged a per credit fee based upon residency status (\$53.80 per credit for residents and \$107.59 for non-residents). They also pay the Technology, Facilities, Tutoring Center, Matriculation, Fitness Center Use and Fitness Center Upgrade fees.

- **Lab:** Nonrefundable lab fees are collected for certain classes. Where applicable, this fee is shown with class listings in this schedule. Distance Education online courses require a Distance Ed fee of \$6/credit (up to 10 credits) for each class. Distance Education Hybrid and Enhanced classes require a Distance Ed fee of \$3/credit (up to 10 credits).
- **Matriculation:** \$1.50/credit (up to 10 credits).
- **Resident Excess Credit:** Residents pay \$96.53 per credit above 18 credits.
- **Technology:** The chart includes a Technology fee of \$3/credit (up to 12 credits). A photo ID card, which serves as your activities card, library card and computer lab card, is issued as part of this fee. The ID card is NOT issued quarterly; it is valid as long as you are at LCC.
- **Transcript:** \$10 fee for each official transcript.
- **Tutoring Center:** The chart includes a fee of \$.50/credit (up to 10 credits), to support the Tutoring Center.
- **Vocational Excess Credit:** Vocational students taking over 18 credits who meet certain requirements pay only \$7 per credit (residents); non-residents over 18 credits pay \$28.

PAYING FOR COLLEGE

Applying for Financial Aid

Who is eligible?

To qualify for Financial Aid you must:

- Have a high school diploma or GED
- Be a U.S. citizen or eligible non-citizen
- Be registered with the Selective Service (if required)
- Visit readysatgrad.org/wasfa to apply for state aid if you are ineligible to apply for federal aid due to immigration status.

Other eligibility issues may be identified in the FAFSA process

What financial aid is available?

Grants, loans, work study employment and scholarships are available to help cover college costs. Special aid programs are also offered for veterans, dislocated workers and first generation students.

How to apply

Students apply for financial aid online through the LCC website. Computers are available for student use in the Admissions Center. Priority deadlines are set for each quarter to allow 3-6 weeks for an application to be processed.

To receive financial aid, a student MUST complete the FAFSA

1. Review the financial aid steps at lowercolumbia.edu/finaid.
To complete the application, a student will need:
 - Social Security Number.
 - Income statements, tax or estimated income tax, bank statement. Visit FAFSA to learn more.
 - LCC's federal school code: 003782
2. Follow the instructions at fafsa.gov and complete the application.
3. Applicants should check their status at LCC's Financial Aid Portal and upload any requested documents. Do this at lowercolumbia.edu/finaid. The applicant will use their Social Security Number and birth date (mm/dd/yy) to log in the first time.

How do I know if aid is approved? Get my money?

You will be notified of any financial aid awards through the Financial Aid Portal (see Step 3). Read your award notice carefully.

If you apply for Financial Aid and register for classes, we assume you are accepting your financial aid award. **If you meet the priority deadline and qualify, your Financial Aid check will be mailed to you before classes begin.**

If you decide not to attend, notify Financial Aid right away to cancel your award.

Review information about class changes or academic progress that might impact your award. Check with your advisor or at the Entry Center for support services to help you succeed in your classes.

Financial Aid Hours

Monday-Friday 8 a.m. - 5 p.m.*

* student aides staff the front counter every
Wednesday from 8-11 a.m. and 2-5 p.m.

Scholarships

Lower Columbia College awards over \$250,000 in scholarships every year. The online process lets students apply for multiple LCC scholarships with a single application. There is no cost to apply.

Scholarships are based on varied criteria, including:

- Program of Study – Nursing, Art, Automotive, Chemistry, Education and more
- Merit – Based on GPA (usually 2.0 to 3.5) or demonstrated community service or leadership
- Need – Demonstrated financial need based on federal guidelines
- General – Qualify for general awards with broad, flexible criteria

These funds can be used to pay for tuition, student fees, books and supplies. Some awards will cover other expenses such as transportation or childcare.

Go to lowercolumbia.edu/scholarships for more information.

Looking for your dream job?

The Career Center at Lower Columbia College provides career exploration and employment services to current students, alumni and community members in all stages of their academic and professional careers. This is a free service open to everyone. Visit the Career Center in the Admissions Center to identify your interests and talents, research potential careers, learn how to prepare for future employment, search for jobs, and receive help with resume writing and interview skills.

Delayed Tuition Payment Options

Need more time to pay your tuition? Here are two options:

Payment Plan: For a \$30 fee you can enroll in a payment plan that charges your credit/debit card or bank account on a monthly basis. For information or to sign up, go to lowercolumbia.edu/payment-plan

Waiting for your Financial Aid funds?

Students who meet the application deadline (November 19 for Winter Quarter 2019) by submitting their application and all required forms are likely to receive a check before the quarter starts and also receive an automatic hold on their classes until finance applies their financial aid to their tuition/fees.

Students who missed the application deadline but complete their file on or before December 10, 2018 are eligible to receive an automatic administrative hold on their classes. However, their check will take 3-6 weeks to process from the date they completed their application and all required forms are submitted.

UNIVERSITY TRANSFER

Students who begin a four-year degree at Lower Columbia College save on tuition costs as well as room and board if they live at home. Records show LCC students who transfer earn an average **3.24 GPA** for junior and senior studies at Washington public universities.

The Associate in Arts Direct Transfer Agreement (AA-DTA) provides a smooth transition to upper division studies in state public universities. The Washington 45 option allows LCC students to transfer after one year without losing any credits.

Associate Degree Transfer Options

Students who complete the AA-DTA at LCC are generally admitted with junior standing by all public universities in the state, some in Oregon, and by most Washington private colleges.

Students graduate with virtually the same number of credits as students who started as freshmen at a university – an indicator of the smooth transition between two-year and four-year colleges.

Transfer students graduate in all subjects, including:

- **Business**
- **Healthcare**
- **STEM** (science, technology, engineering, and math)

The LCC Transfer Center hosts representatives from universities and colleges on campus each quarter to meet with students planning to transfer. The Transfer Club coordinates road trips to various colleges and universities.

For information about LCC transfer options and services for transfer students, visit lowercolumbia.edu/transfer



Washington 45

A student who completes courses selected from the categories listed below will be able to transfer and apply up to 45 quarter credits toward general education requirement(s) at any other public, and most private higher education institutions in the state.

First Year Transfer List

- **Communications** (5 credits) – ENGL& 101, ENGL& 102
 - **Quantitative and Symbolic Reasoning** (5 credits) – MATH& 107, MATH& 148 or MATH& 151
 - **Humanities** (10 credits in two different subject areas or disciplines) – PHIL& 101, MUSC& 105, DRMA& 101, HIST& 116
 - **Social Science** (10 credits in two different subject areas or disciplines) – PSYC& 100, SOC& 101, POLS& 101, POLS& 202, HIST& 117
 - **Natural Sciences** (10 credits in two different subject areas or disciplines) – BIOL& 100,* BIOL& 160*, ASTR& 101*, CHEM& 110*, CHEM& 121*, CHEM& 161*, CHEM& 162*, GEOL& 101*.
- *Natural Science lab courses.
- **Additional 5 credits** in a different discipline can be taken from any category listed above.

For transfer purposes, a student must have a minimum grade of C or better (2.0 or above) in each course completed from this list. Students who transfer Washington 45 credits must still meet the transfer institution's admission requirements and eventually satisfy all their general education requirements and their degree requirements in major, minor and professional programs.

2018-19 Annual Tuition & Fees* Comparison	
Lower Columbia College	\$4,342
Washington Public Universities	\$7,300 - \$11,200

* In-state rates

WORKFORCE PREPARATION

LCC offers a variety of professional-technical programs designed to prepare students to enter the workforce. Research shows that **75% of LCC graduates are employed within nine months of graduation**, compared to just 74% for the state as a whole.

Professional-technical programs include certificates, associate degrees and even transfer degrees in some areas (such as Nursing) where bachelor's degrees are recommended for employment in the field. Many of LCC's programs feature lab and field opportunities that mirror the working world.

LCC offers programs in the following professional-technical areas:

Accounting	Diesel/Heavy Equipment Technology*	Medical Billing & Coding*
Administrative Services*	Early Childhood Education*	Medical Office Administration
Allied Health	Elementary Education	Medical Reception*
Automotive Technology	Health & Fitness	Networking
Basic Office Skills	Information Technology	Nursing
Business Management	Machine Trades*	Para-educator*
Chemical Dependency Studies	Manufacturing*	Retail Management*
Computer Numerical Control (CNC)*	Math Education	Secondary Education
Criminal Justice	Medical Assisting*	Web Development
		Welding*

Learn more about LCC's Professional-Technical program options at lowercolumbia.edu/work

La falta de habilidades lingüísticas no es una barrera para la admisión y la participación en cualquier oportunidad de educación profesional y técnica.

*For more information about Gainful Employment programs at LCC, please visit lowercolumbia.edu/programs/gainful-employment

Notification of Title IV Student Complaint Process

The Higher Education Act (HEA) prohibits an institution of higher education from engaging in a "substantial misrepresentation of the nature of its educational program, its financial charges, or the employability of its graduates." 20 U.S.C. §1094(c)(3)(A). Further, each state must have "a process to review and appropriately act on complaints concerning the institution including enforcing applicable state laws." 34 C.F.R. § 600.9. The Washington State Board for Community and Technical Colleges (SBCTC) maintains a process to investigate complaints of this nature brought by community and technical college students in the state of Washington. For information, contact SBCTC Student Services, PO Box 42495, Olympia, WA 98504-2495, ballinder@sbctc.edu, 360-704-4315 or visit sbctc.edu.



Veterans' Services

Lower Columbia College offers approved educational programs to eligible veterans and eligible dependents of deceased or totally disabled veterans under Title 38 and Title 10, U.S. Code.

LCC staff provides assistance with completing the process to apply for the GI Bill, veterans' health benefits and other college services. To get started, veterans need DD 214 Member 4 Copy, Report of Separation from Active Service.

Resident veterans who served, or who provided direct support to American service members in a combat zone may also qualify for special tuition rates and other financial aid.

Veterans planning to enroll at LCC are encouraged to familiarize themselves with available VA Education Benefits.

The College participates in the following VA educational programs

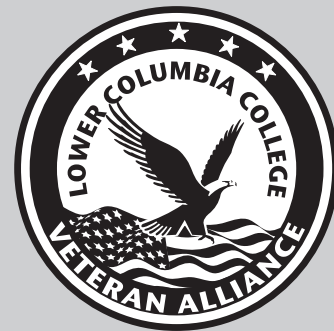
- Post 9/11 GI Bill - Ch 33
- Montgomery GI Bill Active Duty (MGIB-AD) - Ch 30
- Survivors and Dependents Educational Assistance (DEA) - Ch 35
- Montgomery GI Bill Selected Reserve (MGIB-SR) - 1606
- Reserve Educational Assistance Program (REAP) - 1607
- Vocational Rehabilitation and Employment (VR&E) - Ch 31

Lower Columbia College Veteran Alliance

If you are a veteran who has served in the Armed Forces and are attending Lower Columbia College, you are invited to join our Veteran Alliance Organization, which meets twice each month. Veterans decide the meeting agenda. Some possible topics include:

- Navigating the Veterans Affairs system
- Financial Aid for college
- National scholarships available to veterans
- Housing Assistance information
- VFW Presentations
- Connecting with other veterans on campus
- Making the transition back home
- Outreach projects for military and veteran community
- Veteran-related campus events
- Employment assistance through work source veterans representative

For more information call 360.442.2346



Attend an Upcoming Veteran Briefing

Learn about key resources for veterans and their dependents at LCC. This briefing is for new and current students or those who want to learn more about attending college.

Contact Vet Corps Navigator
Connie O'Brien Larsen
cobrienlarsen@lowercolumbia.edu

lowercolumbia.edu/veterans
for more information



Veterans' Corner

The LCC Veterans' Corner is upstairs in the Student Center. There will be a Vet Corps Navigator working in the Veterans' Corner from September through June to help veterans with questions about benefits, attending college, job searches or just to talk. Please stop by!

Buying Your Books

The Lower Columbia College Bookstore makes it easy for you to get your textbooks. Here's how:

- Stop by the Bookstore (in the Student Center) with your schedule and the staff will find your books for you. Some used books are available for most courses so, if possible, shop early.
- Buy books online at lowercolumbia.edu/bookstore and pick them up in-store or have them shipped to your home. Textbooks will be available online beginning December 3.



Bookstore Hours

Monday-Thursday

7:30 a.m.-4:30 p.m.

Friday 7:30 a.m.-2:00 p.m.

Extended hours opening week of the quarter, check Bookstore website.

Fall book buyback

March 18, 12-4:30 p.m.

March 19-21, 8:30 a.m.-4:30 p.m.

March 22, 8:30 a.m.-1 p.m.

Attention LCC Alumni

We invite you to make a fresh connection to LCC by signing up to become a member of the Alumni Association. Whether you earned a degree or certificate or completed just one quarter, we consider you part of our alumni family.

We look forward to connecting with you!



What are you waiting for? Learn more at lowercolumbia.edu/alumni

Does Your Class Use Free Or Inexpensive Textbooks?

Does your class use FREE or INEXPENSIVE textbooks? Alternative Educational Resources (AER) are print or digital, free or inexpensive alternatives to commercial textbooks. AER include course materials that **cost our students less than \$30** to use, and include used textbooks and other physical and digital resources. Look for this symbol in your class schedule: ©

COURSES USING AER — WINTER 2019

ANTH& 206 Cultural Anthropology:DIV-0995	CHEM& 100 Preparatory Chemistry-1770, 1775, 1780	ENGL& 102 Composition II-2800, 2805, 2820, 2825, 2835, 2840, 2850, 3012
ART 130 Introduction to Graphic Design-1055	CHEM& 110 Chemical Concepts w/lab-1780	ENGL 125 Arts Magazine Publication II-2685
ART 241 Beginning Ceramic Art-1080, 1085	CHEM& 121 Introduction to Chemistry-1790, 1795, 1800	ENGL 225 Arts Magazine Publication V-2690
ART 242 Intermediate Ceramic Art-1090, 1095	CMST& 220 Public Speaking-2155, 2175, 2180, 2185	ENVS 150 Environment & Society:DIV-2920
ART 243 Advanced Ceramic Art-1100, 1105	CMST 250 Intercultural Communication:DIV-2145	ERSI 105 Earth Systems-2935
BIOL 150 Human Genetics/Society-1180	CS 170 Programming Fundamentals-2300	HUM 251 Ethics/Policy Healthcare III-3590
BIOL& 160 General Biology-1220	DRMA& 101 Introduction to Theatre-2420	MATH& 107 Math in Society-4260, 4270
BIOL& 160 General Biology w/lab-1255	DRMA 107 Introduction to Acting II-2385	MATH 240 Differential Equations-4225
BIOL& 212 Majors Biology Animal-1265	DRMA 116 Stage Crafts I-2390	MUSC 100 Fundamentals of Music-4415
BIOL& 241 Anatomy & Physiology 1-1280, 1285	DRMA 117 Stage Crafts II-2395	MUSC 115 Group Piano Instruction-4445
BIOL& 242 Anatomy & Physiology 2-1315, 1320	DRMA 118 Stage Crafts III-2400	MUSC 145 Beginning Voice-4495
BIOL& 260 Microbiology-1350	DRMA 207 Acting II-2410	NUTR& 101 Nutrition-4995
BTEC 149 Internet Fundamentals-1465	ECON 105 Introduction to Economics-2525, 2530	PSYC& 100 General Psychology-5305, 5315, 5320
BTEC 150 Introduction to Google Apps-1475	ECON& 201 Micro Economics-2535	SOC& 101 Introduction to Sociology:DIV-5410, 5415, 5435
BTEC 155 Website Management-1480	ECON& 202 Macro Economics-2540	
BTEC 165 Cultural Awareness for Care Professionals - 1505, 1510	ENGL 098 College-Ready English I-2600, 2605, 2610, 2615, 2625	
BUS 100 Foundations Business Success-1585	ENGL 099 College-Ready English II-2640, 2645	
BUS& 101 Introduction to Business-1690, 1705	ENGL& 101 English Composition I-2735, 2750, 2755, 2770, 2775, 2780	
BUS 119 Business Communications-1600, 1605		
BUS 165 Salesmanship-1640		
BUS 244 Human Resource Management-1665		
BUS 264 Principles of Marketing-1670		



"Open Textbooks" is licensed under CC BY 3.0

ONLINE LEARNING @ LCC

Online learning at Lower Columbia College offers flexibility for those with work, family and other responsibilities to complete college courses and even a degree without a regular commute to campus.

Online – Students complete all course work via the Internet.

Hybrid – Courses blend classroom sessions with online participation and learning. For example: students go online, read lessons, take a practice quiz; then come to a face-to-face class and practice what they learned online.

Enhanced – Course is fully face-to-face, but has an additional, required online component. (i.e. submitting assignments or discussion boards)

The online learning process requires the same commitment as a traditional course. Staying up with the class and completing all work on time is vital. Once a learner gets behind, it is very difficult to catch up.

The majority of LCC online and hybrid courses are facilitated through the learning management system, Canvas.

Note: Some online classes require that students use a proctoring service for their online exams. This can be done at LCC, other colleges/approved sites, or with Proctor U. Many test proctoring locations charge a fee for this service, which students are responsible for paying. Students should work with their instructors if they have any questions about test proctoring requirements.

Need help with Canvas?

If your class listing shows this symbol ▼ you will be using Canvas – LCC's online learning management system.

Schedule a free one-on-one help session!

Learn how to:

- *Change your profile settings in Canvas*
- *Navigate your course*
- *Complete assignments, quizzes, and more!*

To schedule an appointment or for more information, stop by the Learning Commons, or call eLearning 360.442.2520 or Tutoring 360.442.2572

LCC ONLINE CLASSES – WINTER 2019

ACCT& 202	Principles of Accounting II	COLL 74	Math Success	*MATH 078/079	Pre-College Math I
AH 100	Blood Borne Pathogens and Infection Control	COLL 101	First Year Seminar I	*MATH 088/089	Pre-College Math II
ART 227	History of Western Art	COLL 102	First Year Seminar II	*MATH 098/099	Pre-College Math III
ART& 100	Art Appreciation:DIV	CS 110	Microcomputer Applications	MATH 125	Applied College Algebra
BIOL& 160	General Biology	ECED& 100	Child Care Basics	MATH 210	Elements of Statistics
BIOL& 241	Human A & P 1	ECED& 120	Practicum-Nurturing Relationships	MATH& 107	Math in Society
BIOL& 242	Human A & P 2	ECED& 132	Infants/Toddlers Care	MUSC 209	The Blues Culture:DIV
BIOL& 260	Microbiology	ECED& 134	Family Child Care	MUSC& 105	Music Appreciation
BTEC 131	Intro to Spreadsheets	ECON 105	Intro to Economics	NUTR& 101	Nutrition
BTEC 148	Introduction to Outlook	ECON& 202	Macro Economics	OCEA& 101	Intro to Oceanography
BTEC 181	Medical Terminology I	ENGL 98	College-Ready English I	PHED 152	Personalized Fitness
BTEC 182	Medical Terminology II	ENGL 99	College-Ready English II	PHED 252	Personalized Fitness
BUS 144	Management/Human Relations:DIV	ENGL 280	Multicultural Lit:DIV	PHIL& 101	Intro to Philosophy
BUS 150	Customer Service/Management	ENGL& 101	English Composition I	PSYC 255	Psychosocial Issues in Health Care
BUS 206	Statistical Methods	ENGL& 102	Composition II	PSYC& 100	General Psychology
BUS 244	Human Resource Management	ENGL& 235	Technical Writing	PSYC& 200	Lifespan Psychology
BUS& 101	Intro to Business	ENVS 150	Environment & Society:DIV	SOC& 101	Intro to Sociology:DIV
BUS& 201	Business Law	ERSI 105	Earth Systems	*SPAN& 121	Spanish I:DIV
CHEM& 100	Preparatory Chemistry	GEOL& 208	Geology of Pacific NW	*SPAN& 122	Spanish II:DIV
CHEM& 110	Chemical Concepts w/lab	HIST 254	History of WA and Pacific NW	*SPAN& 123	Spanish III:DIV
CHEM& 121	Intro to Chemistry	HIST& 136	US History 1	*SPAN& 221	Spanish IV
CJ 154	American Legal System	HIST& 137	US History 2	*SPAN& 222	Spanish V
CMST& 210	Interpersonal Communication	HLTH 106	Health and Wellness	*SPAN& 223	Spanish VI
CMST& 220	Public Speaking	HUM 210	Myth and Rites:DIV		
CMST& 230	Small Group Communication	HUM 230	Thinking About Thinking		
		HUM 250	Ethics/Policy Healthcare II		

**These courses do not use Canvas*

Start Next Quarter



See If You Qualify for Special Funding for College

Special funding, in addition to traditional financial aid, is available to help pay college expenses for individuals seeking job training at Lower Columbia College. Current students, and others who want to train for a new job, can easily see if they might qualify through a new online tool.

Start Next Quarter

Take the 10-minute survey at www.startnextquarter.org to find out if you might qualify for special funding programs that help cover college expenses, including textbooks, transportation and childcare. If you pre-qualify, you can sign-up for an information session where you'll learn about available funding programs, determine your eligibility and submit an application. You'll also learn about:

- Available career training programs
- How to prepare for the placement assessments
- How to apply for federal financial aid (FAFSA)
- How to keep your unemployment or basic food benefits while in training

For help completing the survey, call the Workforce Services office, 360.442.2330, or stop by the Career Center for one-on-one support.

Worker Retraining

360.442.2334

lowercolumbia.edu/worker-retraining

Worker Retraining is a state-funded program that provides job-related training and employment services to dislocated and unemployed workers to help them gain additional training in their field or to get started on a new career. You may be eligible to receive additional funding to help pay for retraining tuition, books and fees or "jump-start" funding while waiting for financial aid approval. If you are currently receiving unemployment benefits, Worker Retraining staff will work with you to navigate the employment service programs available to the unemployed.

Opportunity Grant

360.442.2338

lowercolumbia.edu/opportunity-grant

Unemployed or underemployed adults seeking a certificate or degree in a high demand career field, may be eligible for help to pay for college expenses under the Opportunity Grant Program. The grant provides individualized support services, along with funding for tuition and fees, books, and/or tools for up to 45 credits.

Basic Food, Employment & Training (BFET)

360.442.2332

lowercolumbia.edu/bfet

In a partnership with Department of Social and Health Services (DSHS), Lower Columbia College offers opportunities for vocational education and career development to low income students who qualify to receive, or are currently receiving, federally-issued basic food benefits. While BFET does not provide tuition assistance, you may qualify for other assistance such as child care and food benefits. If you are currently receiving federally issued basic food benefits, BFET will allow you to continue to receive those benefits while attending school. As a benefits recipient, you will be required to participate in monthly career exploration activities with BFET staff.

For more information about workforce funding programs and the services available, please contact:

Basic Food, Employment & Training (BFET)

Katie Sully, Educational Planner
ksully@lowercolumbia.edu

Steve Boyer, Program Coordinator
sboyer@lowercolumbia.edu

Opportunity Grant

Darren Schwegler, Educational Planner
dschwegler@lowercolumbia.edu

Worker Retraining

Crystal Heitz, Educational Planner
cheitz@lowercolumbia.edu



Diversity Classes

To earn a degree at LCC, you must pass a 5-credit Cultural Diversity class. These courses meet the requirement.

ANTH& 100	Survey of Anthropology	ENGL 245	Contemporary Literature
ANTH 109	American Cultural Diversity	ENGL 246	Rainbow Readers: LGBTQ Literature
ANTH& 206	Cultural Anthropology		
ART& 100	Art Appreciation	ENGL 280	Multicultural Literature
ART 206	Arts of the Americas	ENVS 150	Environment and Society
ART 207	Arts of the World	HIST& 126	World Civilization I
ART 208	Arts of the Northwest	HIST& 127	World Civilization II
ART 228	History of Western Art	HIST& 128	World Civilization III
ASL& 123	American Sign Language III	HIST 205	History of East Asia
BTEC 165	Cultural Awareness for Care Professionals	HIST& 215	Women in U.S. History
		HUM 104	Ethics and Cultural Values
BUS 144	Management of Human Relations	HUM 164	Cultural Journeys
		HUM 210	Myths and Rites
CHIN& 121	Chinese I	MUSC 117	Music Cultures of the World
CHIN& 122	Chinese II	MUSC 119	American Music
CHIN& 123	Chinese III	MUSC 209	The Blues Culture
CMST 240	Rhetorical Criticism and Popular Culture (was SPCH 209)	SOC& 101	Introduction to Sociology (Includes WAOL's SOC& 101)
CMST 250	Intercultural Communication (Was SPCH 109)	SOC 210	Human Sexuality
EDUC& 205	Introduction to Education w/Field Experience	SOC 225	Race and Ethnicity
		SPAN& 121	Spanish I
ENGL 140	Introduction to Women Writers	SPAN& 122	Spanish II
		SPAN& 123	Spanish III

Winter 2019 Final Exam Schedule (March 19-21)

Use this chart to determine your final exam time. Schedules are online at lowercolumbia.edu/classes/finals.php

Class begins between	On these days	Your final exam time will be	On this date
7:00 a.m. - 8:20 a.m.	M, MWF, MW, W, Daily	8:00 a.m. - 10:00 a.m.	March 20
7:00 a.m. - 8:20 a.m.	MTWTh, MTWF, MWThF, TTh	8:00 a.m. - 10:00 a.m.	March 21
9:00 a.m. - 9:50 a.m.	TTh, MTWTh	8:00 a.m. - 10:00 a.m.	March 19
9:00 a.m. - 9:50 a.m.	MWF, MW, Daily	10:10 a.m. - 12:10 p.m.	March 20
9:55 a.m. - 10:50 a.m.	MW, MWF, Daily	10:10 a.m. - 12:10 p.m.	March 21
11:00 a.m. - 11:55 a.m.	MWThF, TTh, MTWTh	10:10 a.m. - 12:10 p.m.	March 19
11:00 a.m. - 11:55 a.m.	MW, MWF, Daily	12:20 p.m. - 2:20 p.m.	March 20
12:00 p.m. - 12:55 p.m.	MW, Daily, MWThF	12:20 p.m. - 2:20 p.m.	March 21
1:00 p.m. - 2:00 p.m.	MWF, MW, W, MTWTh, Daily, MTWF	12:20 p.m. - 2:20 p.m.	March 19
1:00 p.m. - 2:30 p.m.	TTh, Th, T	2:30 p.m. - 4:30 p.m.	March 20
2:40 p.m. - 4:00 p.m.	MWF, MW, M, W	2:30 p.m. - 4:30 p.m.	March 21
2:40 p.m. - 4:00 p.m.	T, TTh	2:30 p.m. - 4:30 p.m.	March 19
Classes not listed above or classes that conflict with other finals		Please contact your instructor for your final exam time	
5:00 p.m.-10:00 p.m.	All Days	During Class	Talk to Instructor

Evening classes meeting once a week will take their final exam at the regular class time during finals week. Evening classes meeting more than once a week will take the final exam at the regular class time on whichever day during finals week the class agrees upon.

Students enrolled in online courses (DE section) are to contact their instructor for final exam information.

Students are not required to take final exams for more than two classes on a single day. If such a conflict arises, students are to contact their instructor to discuss alternative options. If no solution is determined after the initial meeting with the instructor, students may then petition the appropriate division dean. Arrangements must be made by the end of the 8th week of instruction. For assistance please contact the Office of Instruction by calling 360.442.2550. *Exam priorities shall be based on class meeting day order first, then meeting time.*

Final exams will be administered on the day designated on the final exam schedule. If a deviation from the scheduled day is desired, faculty must seek approval from the appropriate division dean. Time changes, unanimously approved by the class, are acceptable.

For any classes that conflict with other final exams please talk to your instructor for more information.

CLASS LISTINGS

These initials or symbols on the course listing mean:

A = No more than three PHED activity credits may be taken as electives towards a DTA degree.

D = Course meets Diversity requirement.

H = Course meets distribution credit in Humanities.

SS = Course meets distribution credit in Social Science.

NS = Course meets distribution credit in Natural Science.

NSL = Course meets distribution credits in Natural Science as a lab course.

P = Course meets distribution credits as a performance based course.

& = Course is part of the Washington Community Colleges' Common Course Numbering system.

▽ & DE = Course uses the CANVAS learning management system. All courses with this symbol have a fee. All DE sections have a fee of \$6.00 per credit, maximum of \$60.00.

All other **▽** sections have a fee of \$3.00 per credit, maximum of \$30.00. CANVAS orientation information is on page 12.

© = Course uses Open or Alternative Educational Resources/Textbooks cost less than \$30.00

⊗ = Course is clustered with other class sections that meet at the same time, in the same classroom.

Accounting

Unless otherwise noted, a computer lab fee is charged for all ACCT courses.

ACCT 101 INTRODUCTION TO ACCOUNTING CONCEPTS

▽ 0880 A 5 TTh 9:00a.m.-11:00a.m. AAR 103 STANLEY J
Hybrid class; partially online.

ACCT& 201 PRINCIPLES OF ACCOUNTING I

▽ 0905 A 5 MW 11:00a.m.-12:25p.m. AAR 103 STANLEY J
Hybrid class; partially online.

ACCT& 202 PRINCIPLES OF ACCOUNTING II

▽ 0910 A 5 MW 9:00a.m.-10:25a.m. AAR 103 STANLEY J
Hybrid class; partially online.
▽ 0915 DE 5 ARR ARR ARR STANLEY J
Online class. No computer lab fee.

Course # Course Name

▽ Item# Sec.# Cred.# Days Time Place Instructor

Allied Health

AH 100 BLOOD BORNE PATHOGENS AND INFECTION CONTROL

▽ 0920 DE 1 ARR ARR ARR SOLADEY V
Online class.

AH 166 MENTAL HEALTH FIRST AID FOR ADULTS

▽ 0935 A 1 Sa 8:00a.m.-5:00p.m. HSB 105 GAITHER M
Class date: Saturday, January 19th.
Hybrid class; partially online.

EVENING CLASSES

AH 114 HEALTHCARE COMMUNICATION SKILLS

▽ 0930 N 2 W 5:15p.m.-7:00p.m. HSB 244 ENGEL E
Hybrid class; partially online.

American Sign Language

ASL& 122 AM SIGN LANGUAGE II

H

▽ 1165 A 5 TTh 8:30a.m.-10:45a.m. MAN 145 MORGAN M A
▽ 1170 B 5 TTh 11:00a.m.-1:15p.m. MAN 145 MORGAN M A

Anthropology

ANTH& 206 CULTURAL ANTHROPOLOGY:DIV

D,SS

▽ 0995 A 5 MWF 10:30a.m.-11:55a.m. MAN 145 BATEY T
© Uses Alternative Educational Resources.

Art

ART& 100 ART APPRECIATION:DIV

D,H

▽ 1150 DE 5 ARR ARR ARR COOPER R
Contact the instructor at rcooper@lowercolumbia.edu for more information.
Online class.

▽ 1155 DE1 5 ARR ARR ARR COOPER R
Contact the instructor at rcooper@lowercolumbia.edu for more information.
Online class.

▽ 1160 DE2 5 ARR ARR ARR COOPER R
Contact the instructor at rcooper@lowercolumbia.edu for more information.
Online class.

ART 101 BEGINNING DRAWING

1000 A 3 MW 1:00p.m.-3:40p.m. MAN 109 KOHLMEIER M
Lab Fee: \$6.80 ⊗ Course is clustered with other class sections that meet at the same time, in the same classroom.

ART 102 INTERMEDIATE DRAWING

1010 A 3 MW 1:00p.m.-3:40p.m. MAN 109 KOHLMEIER M
Lab Fee: \$6.80 ⊗ Course is clustered with other class sections that meet at the same time, in the same classroom.

ART 103 ADVANCED DRAWING

1020 A 3 MW 1:00p.m.-3:40p.m. MAN 109 KOHLMEIER M
Lab Fee: \$6.80 ⊗ Course is clustered with other class sections that meet at the same time, in the same classroom.

Course # Course Name

Item#	Sec.#	Cred.#	Days	Time	Place	Instructor
-------	-------	--------	------	------	-------	------------

ART 106 TWO-DIMENSIONAL DESIGN

1030 IS	5	MTWTh	9:00a.m.-11:40a.m.	MAN 119	KOHLMEIER M
---------	---	-------	--------------------	---------	-------------

Lab Fee: \$6.80
 Integrative Studies: The Artistic "I"/eye. Students must enroll in ENGL& 102 IS (#3012) and ART 106 IS (#1030) or ART 107 IS (#1035) a total of 10 credits.

⊗ Course is clustered with other class sections that meet at the same time, in the same classroom.

ART 107 COLOR THEORY AND DESIGN

1035 IS	5	MTWTh	9:00a.m.-11:40a.m.	MAN 119	KOHLMEIER M
---------	---	-------	--------------------	---------	-------------

Lab Fee: \$6.80
 Integrative Studies: The Artistic "I"/eye. Students must enroll in ENGL& 102 IS (#3012) and ART 106 IS (#1030) or ART 107 IS (#1035) a total of 10 credits.

⊗ Course is clustered with other class sections that meet at the same time, in the same classroom.

ART 111 BEGINNING PAINTING-ACRYLICS

1040 A	3	TTh	10:00a.m.-12:40p.m.	MAN 103	COOPER R
--------	---	-----	---------------------	---------	----------

Lab Fee: \$5.00 ⊗ Course is clustered with other class sections that meet at the same time, in the same classroom.

ART 112 INTERMEDIATE PAINTING-ACRYLICS

1045 A	3	TTh	10:00a.m.-12:40p.m.	MAN 103	COOPER R
--------	---	-----	---------------------	---------	----------

Lab Fee: \$5.00 ⊗ Course is clustered with other class sections that meet at the same time, in the same classroom.

ART 113 ADVANCED PAINTING-ACRYLICS

1050 A	3	TTh	10:00a.m.-12:40p.m.	MAN 103	COOPER R
--------	---	-----	---------------------	---------	----------

Lab Fee: \$5.00 ⊗ Course is clustered with other class sections that meet at the same time, in the same classroom.

ART 130 INTRODUCTION TO GRAPHIC DESIGN

1055 A	4	TTh	10:30a.m.-11:55a.m.	MAN 118	MYNHIER J
--------	---	-----	---------------------	---------	-----------

Hybrid class; partially online.

Lab Fee: \$5.80 ☉ Uses Alternative Educational Resources.

ART 215 PORTFOLIO WEBSITE DESIGN

1070 A	4	MW	11:00a.m.-1:40p.m.	MAN 118	MYNHIER J
--------	---	----	--------------------	---------	-----------

ART 227 HISTORY OF WESTERN ART

1075 DE	5	ARR	ARR	ARR	MYNHIER J
---------	---	-----	-----	-----	-----------

Online class.

ART 241 BEGINNING CERAMIC ART

1080 A	3	MW	1:00p.m.-3:40p.m.	MAN 104	WOODS T
--------	---	----	-------------------	---------	---------

Lab Fee: \$23.60 ⊗ Course is clustered with other class sections that meet at the same time, in the same classroom. ☉ Uses Alternative Educational Resources.

ART 242 INTERMEDIATE CERAMIC ART

1090 A	3	MW	1:00p.m.-3:40p.m.	MAN 104	WOODS T
--------	---	----	-------------------	---------	---------

Lab Fee: \$32.00 ⊗ Course is clustered with other class sections that meet at the same time, in the same classroom. ☉ Uses Alternative Educational Resources.

ART 243 ADVANCED CERAMIC ART

1100 A	3	MW	1:00p.m.-3:40p.m.	MAN 104	WOODS T
--------	---	----	-------------------	---------	---------

Lab Fee: \$32.00 ⊗ Course is clustered with other class sections that meet at the same time, in the same classroom. ☉ Uses Alternative Educational Resources.

ART 290 ART STUDIO LAB-CERAMICS

1120 MM1-3	ARR	ARR		ARR	WOODS T
------------	-----	-----	--	-----	---------

Instructor permission required to enroll.

Lab Fee: \$32.00

ART 295 ART LAB-PHOTOGRAPHY

1125 MM1-3	ARR	ARR		ARR	PIERSON M
------------	-----	-----	--	-----	-----------

Instructor permission required to enroll.

Lab Fee: \$40.80

ART 297 INDEPENDENT STUDY-ADOBE WORKSHOP

1130 MM1-3	ARR	ARR		ARR	PIERSON M
------------	-----	-----	--	-----	-----------

Instructor permission required to enroll.

ART 299 INDEPENDENT STUDY-ART

1135 MM1-3	ARR	ARR		ARR	COOPER R
------------	-----	-----	--	-----	----------

Instructor permission required to enroll.

Lab Fee: \$22.60

1140 MM2 1-3	ARR	ARR		ARR	KOHLMEIER M
--------------	-----	-----	--	-----	-------------

Instructor permission required to enroll.

Lab Fee: \$22.60

1145 MM3 1-3	ARR	ARR		ARR	MYNHIER J
--------------	-----	-----	--	-----	-----------

Instructor permission required to enroll.

Lab Fee: \$22.60

EVENING CLASSES**ART 101 BEGINNING DRAWING**

1005 N	3	TTh	6:00p.m.-8:40p.m.	MAN 109	KOHLMEIER M
--------	---	-----	-------------------	---------	-------------

Lab Fee: \$6.80 ⊗ Course is clustered with other class sections that meet at the same time, in the same classroom.

ART 102 INTERMEDIATE DRAWING

1015 N	3	TTh	6:00p.m.-8:40p.m.	MAN 109	KOHLMEIER M
--------	---	-----	-------------------	---------	-------------

Lab Fee: \$6.80 ⊗ Course is clustered with other class sections that meet at the same time, in the same classroom.

ART 103 ADVANCED DRAWING

1025 N	3	TTh	6:00p.m.-8:40p.m.	MAN 109	KOHLMEIER M
--------	---	-----	-------------------	---------	-------------

Lab Fee: \$6.80 ⊗ Course is clustered with other class sections that meet at the same time, in the same classroom.

ART 155 BEGINNING DIGITAL PHOTO

1065 N	5	TTh	3:30p.m.-7:10p.m.	MAN 118	PIERSON M
--------	---	-----	-------------------	---------	-----------

Lab Fee: \$40.80

ART 241 BEGINNING CERAMIC ART

1085 N	3	MW	6:00p.m.-8:40p.m.	MAN 104	WOODS T
--------	---	----	-------------------	---------	---------

Lab Fee: \$23.60 ⊗ Course is clustered with other class sections that meet at the same time, in the same classroom. ☉ Uses Alternative Educational Resources.

ART 242 INTERMEDIATE CERAMIC ART

1095 N	3	MW	6:00p.m.-8:40p.m.	MAN 104	WOODS T
--------	---	----	-------------------	---------	---------

Lab Fee: \$32.00 ⊗ Course is clustered with other class sections that meet at the same time, in the same classroom. ☉ Uses Alternative Educational Resources.

ART 243 ADVANCED CERAMIC ART

1105 N	3	MW	6:00p.m.-8:40p.m.	MAN 104	WOODS T
--------	---	----	-------------------	---------	---------

Lab Fee: \$32.00 ⊗ Course is clustered with other class sections that meet at the same time, in the same classroom. ☉ Uses Alternative Educational Resources.

Astronomy**EVENING CLASSES****ASTR& 101 INTRODUCTION TO ASTRONOMY**

NSL

1175 N	5	MW	6:00p.m.-8:50p.m.	HSB 137	LIVINS P
--------	---	----	-------------------	---------	----------

Lab included.

Course # Course Name

Item#	Sec.#	Cred.#	Days	Time	Place	Instructor
-------	-------	--------	------	------	-------	------------

Automotive Technology

There is a fee of \$13.50 per student per quarter for all AMTC classes.

AMTC 100 ESSENTIALS OF MECHANICS

0950 A	5	MT	12:30p.m.-3:30p.m.	DTV 132	ROESKE G
--------	---	----	--------------------	---------	----------

AMTC 114 AUTOMOTIVE CHASSIS

0955 A	15	MTWTh	7:30a.m.-12:00p.m.	DTV 232	KILE C
--------	----	-------	--------------------	---------	--------

AMTC 206 FUELS AND EMISSIONS

0965 A	15	MTWTh	7:30a.m.-12:00p.m.	DTV 233	ROESKE G
--------	----	-------	--------------------	---------	----------

Prerequisite: AMTC 104 or instructor permission.

AMTC 299 INDEPENDENT STUDY

0985 MM1	1-5	ARR	ARR	DTV 108	ROESKE G
----------	-----	-----	-----	---------	----------

Instructor permission required to enroll.

0990 MM2	1-5	ARR	ARR	DTV 108	KILE C
----------	-----	-----	-----	---------	--------

Instructor permission required to enroll.

Biology

BIOL 150 HUMAN GENETICS AND SOCIETY

NSL

1180 A	5	W	1:30p.m.-3:40p.m.	HSB 302	FULLER K
--------	---	---	-------------------	---------	----------

Hybrid class; partially online.

Lab included. Lab Fee: \$26.90 © Uses Alternative Educational Resources.

BIOL& 160 GENERAL BIOLOGY

NSL

1220 A	5	TTh	9:00a.m.-11:00a.m.	HSB 123	MCCORMICK C
--------	---	-----	--------------------	---------	-------------

Students must also enroll in one of the lab sections, BIOL& 160 LA or LB. Students will not be allowed to enroll in the DE lab sections.

Lab Fee: \$11.50 © Uses Alternative Educational Resources.

1225 DE	5	ARR	ARR	ARR	MCCORMICK C
---------	---	-----	-----	-----	-------------

Students must also enroll in one of the lab sections, BIOL& 160 DEA or DEB.

Students will be required to purchase a Labster Access Code through the LC Bookstore for the online lab portion of the course. Total Cost: \$49.

Online class.

1230 DE1	5	ARR	ARR	ARR	PAEDES D
----------	---	-----	-----	-----	----------

Students will be required to purchase a Labster Access Code through the LC Bookstore for the online lab portion of the course. Total Cost: \$49.

Online class.

BIOL& 160 GENERAL BIOLOGY—LAB

1245 LA	0	Th	11:10a.m.-1:00p.m.	HSB 304	MCCORMICK C
---------	---	----	--------------------	---------	-------------

1250 LB	0	F	9:00a.m.-10:50a.m.	HSB 304	MCCORMICK C
---------	---	---	--------------------	---------	-------------

1235 DEA	0	ARR	ARR	ARR	MCCORMICK C
----------	---	-----	-----	-----	-------------

Online class.

1240 DEB	0	ARR	ARR	ARR	MCCORMICK C
----------	---	-----	-----	-----	-------------

Online class.

BIOL 179 HUMAN BIOLOGY & EXERCISE

1185 A	5	MW	9:00a.m.-10:15a.m.	HSB 105	STAFF
--------	---	----	--------------------	---------	-------

MW			10:30a.m.-12:20p.m.	HSB 306	
----	--	--	---------------------	---------	--

Lab included. Lab Fee: \$27.00

BIOL& 212 MAJORS BIOLOGY ANIMAL

NSL

1265 A	5	TTh	1:00p.m.-2:15p.m.	HSB 104	FULLER K
--------	---	-----	-------------------	---------	----------

TTh			2:30p.m.-4:20p.m.	HSB 304	
-----	--	--	-------------------	---------	--

Lab included. Lab Fee: \$21.53 © Uses Alternative Educational Resources.

BIOL& 241 HUMAN ANATOMY AND PHYSIOLOGY 1

NSL

1280 A	5	MWF	1:30p.m.-2:45p.m.	HSB 101	MYERS L
--------	---	-----	-------------------	---------	---------

Prerequisite: BIOL& 160, BIOL& 260 or BIOL& 211 with a grade of C or above. Students must also enroll in one of the lab sections, LA or LB. Free digital version of Openstax A&P book available in course upon enrollment.

Lab Fee: \$21.53 © Uses Alternative Educational Resources.

1285 DE	5	ARR	ARR	ARR	MYERS L
---------	---	-----	-----	-----	---------

Students must also enroll in lab sections BIOL& 241 DEA or DEB. Free digital version of Openstax A&P book available in course upon enrollment.

© Uses Alternative Educational Resources.

Online class.

BIOL& 241 HUMAN ANATOMY AND PHYSIOLOGY 1—LAB

1300 LA	0	Th	10:00a.m.-11:50a.m.	HSB 306	MYERS L
---------	---	----	---------------------	---------	---------

1305 LB	0	F	10:00a.m.-11:50a.m.	HSB 306	MYERS L
---------	---	---	---------------------	---------	---------

1290 DEA	0	ARR	ARR	ARR	MYERS L
----------	---	-----	-----	-----	---------

Online class.

1295 DEB	0	ARR	ARR	ARR	MYERS L
----------	---	-----	-----	-----	---------

Online class.

BIOL& 242 HUMAN ANATOMY AND PHYSIOLOGY 2

NSL

1315 A	5	MWF	11:10a.m.-12:25p.m.	HSB 101	MEYERS R
--------	---	-----	---------------------	---------	----------

Prerequisite: BIOL& 241 with a C or better. Prerequisite waiver may be granted with appropriate documentation to the instructor. Students must enroll in one of the lab sections, LA, or LB. No textbook is required for this course.

Lab Fee: \$21.53 © Uses Alternative Educational Resources.

1320 DE	5	ARR	ARR	ARR	MEYERS R
---------	---	-----	-----	-----	----------

Prerequisite: BIOL& 241 with a C or better. Prerequisite waiver may be granted with appropriate documentation to the instructor. No textbook is required. Students must also enroll in one of the lab sections, DEA or DEB.

Online class. © Uses Alternative Educational Resources.

BIOL& 242 HUMAN ANATOMY AND PHYSIOLOGY 2—LAB

1335 LA	0	T	10:00a.m.-11:50a.m.	HSB 306	MEYERS R
---------	---	---	---------------------	---------	----------

1340 LB	0	W	1:00p.m.-2:50p.m.	HSB 306	STAFF
---------	---	---	-------------------	---------	-------

1325 DEA	0	ARR	ARR	ARR	MEYERS R
----------	---	-----	-----	-----	----------

Online class.

1330 DEB	0	ARR	ARR	ARR	MEYERS R
----------	---	-----	-----	-----	----------

Online class.

BIOL& 260 MICROBIOLOGY

NSL

1350 DE	5	ARR	ARR	ARR	FULLER K
---------	---	-----	-----	-----	----------

Students must also enroll in one of the lab sections, BIOL& 260 DEA or DEB.

Lab Fee: \$26.90 © Uses Alternative Educational Resources.

Online class.

BIOL& 260 MICROBIOLOGY—LAB

1355 DEA	0	ARR	ARR	ARR	FULLER K
----------	---	-----	-----	-----	----------

Online class.

1360 DEB	0	ARR	ARR	ARR	FULLER K
----------	---	-----	-----	-----	----------

Online class.

BIOL 298 HUMAN PHYSIOLOGY

1200 MM	1	ARR	ARR	ARR	MEYERS R
---------	---	-----	-----	-----	----------

EVENING CLASSES

BIOL& 160 GENERAL BIOLOGY WITH LAB

NSL

1255 N	5	W	5:15p.m.-7:30p.m.	HSB 304	MCCORMICK C
--------	---	---	-------------------	---------	-------------

Lab included. Lab Fee: \$11.50 © Uses Alternative Educational Resources.

Hybrid class; partially online.

Course # Course Name

Item#	Sec.#	Cred.#	Days	Time	Place	Instructor
-------	-------	--------	------	------	-------	------------

Blueprint Reading

BLPT 150 MACHINIST BLUEPRINT READING

1365 A	5	DAILY	12:00p.m.-12:50p.m.	VOC 113	SHEPHERD N
--------	---	-------	---------------------	---------	------------

EVENING CLASSES**BLPT 160 BLUEPRINT READING FOR WELDERS**

1380 N	5	MW	5:00p.m.-7:30p.m.	VOC 152	ENOCH N
--------	---	----	-------------------	---------	---------

Business Administration

BUS 100 FOUNDATIONS OF BUSINESS SUCCESS

1585 A	5	MW	8:00a.m.-10:00a.m.	AAR 105	GAITHER/CUMMINGS
--------	---	----	--------------------	---------	------------------

Hybrid class; partially online. © Uses Alternative Educational Resources.

1586 B	5	TTh	1:00p.m.-3:00p.m.	AAR 108	GAITHER/CUMMINGS
--------	---	-----	-------------------	---------	------------------

Hybrid class; partially online. © Uses Alternative Educational Resources.

BUS& 101 INTRODUCTION TO BUSINESS

SS

1690 A	5	W	9:00a.m.-11:00a.m.	AAR 123	ALLWINE T
--------	---	---	--------------------	---------	-----------

Hybrid class; partially online. © Uses Alternative Educational Resources.

1700 DE	5	ARR	ARR	ARR	STUART M
---------	---	-----	-----	-----	----------

Online class.

BUS 104 BUSINESS MATH APPLICATIONS

1590 A	5	TTh	11:00a.m.-12:30p.m.	AAR 106	CUMMINGS D
--------	---	-----	---------------------	---------	------------

Hybrid class; partially online.

BUS 119 BUSINESS COMMUNICATIONS

1600 A	5	W	11:00a.m.-1:00p.m.	AAR 123	ALLWINE T
--------	---	---	--------------------	---------	-----------

Hybrid class; partially online. © Uses Alternative Educational Resources.

BUS 144 MANAGEMENT OF HUMAN RELATIONS:DIV

D

1610 A	5	W	1:30p.m.-3:30p.m.	AAR 106	STUART M
--------	---	---	-------------------	---------	----------

Hybrid class; partially online.

1620 DE	5	ARR	ARR	ARR	STUART M
---------	---	-----	-----	-----	----------

Online class.

BUS 150 CUSTOMER SERVICE/MANAGEMENT

1635 DE	5	ARR	ARR	ARR	STUART M
---------	---	-----	-----	-----	----------

Online class.

BUS 165 SALESMANSHIP

1640 A	5	T	1:00p.m.-3:00p.m.	MAN 146	ALLWINE T
--------	---	---	-------------------	---------	-----------

Hybrid class; partially online. © Uses Alternative Educational Resources.

Receive Emergency Text Alerts from LCC
lowercolumbia.edu/alerts

**BUS& 201 BUSINESS LAW**

SS

1710 DE	5	ARR	ARR	ARR	QUIRK A
---------	---	-----	-----	-----	---------

Prerequisite: ENGL& 101 or BUS 119 with a grade of C or better or instructor permission.
Online class.

BUS 206 STATISTICAL METHODS

1645 A	5	DAILY	8:00a.m.-8:50a.m.	VOC 111	SWEE R
--------	---	-------	-------------------	---------	--------

⊗ Course is cross-listed as BUS 206 and Math 210.

1650 B	5	TTh	1:30p.m.-3:45p.m.	HSB 107	HEBERT M
--------	---	-----	-------------------	---------	----------

⊗ Course is cross-listed as BUS 206 and Math 210.

1655 DE	5	ARR	ARR	ARR	SAMUELS S
---------	---	-----	-----	-----	-----------

⊗ Course is cross-listed as BUS 206 and Math 210.

1660 DE	1	5	ARR	ARR	HEBERT M
---------	---	---	-----	-----	----------

⊗ Course is cross-listed as BUS 206 and Math 210.

BUS 244 HUMAN RESOURCE MANAGEMENT

1665 DE	5	ARR	ARR	ARR	CUMMINGS D
---------	---	-----	-----	-----	------------

Online class. © Uses Alternative Educational Resources.

BUS 264 PRINCIPLES OF MARKETING

1670 A	5	Th	11:00a.m.-1:00p.m.	MAN 146	ALLWINE T
--------	---	----	--------------------	---------	-----------

Class is held on campus Thursdays. Students have the option to attend online.
Check with the instructor for details.

Hybrid class; partially online. © Uses Alternative Educational Resources.

BUS 294 CAREER SUCCESS

1685 A	2	W	12:00p.m.-12:50p.m.	AAR 102	BENNETT S
--------	---	---	---------------------	---------	-----------

Computer lab fee will be charged.

Hybrid class; partially online. ⊗ Course is clustered with other class sections that meet at the same time, in the same classroom.

Business Technology

If you are enrolled in "P" section, please sign up for individual class orientations in the Business Technology Lab located in Applied Arts 110. You must attend an orientation for your class during the first week of the quarter. A syllabus and progress chart will be provided to you at that time. The BTEC Lab hours are Monday-Friday 9 a.m. to 3:45 p.m., testing is Monday-Thursday 9 a.m. to 2 p.m. and Friday 9 a.m. to 12 p.m. Students must have photo ID to use the computer labs. Unless otherwise noted, a computer lab fee is charged for BTEC Lab courses. Please contact the lab at 360.442.2710 if you have any questions.

Unless otherwise noted, a computer lab fee is charged for all BTEC courses.

BTEC 100 COMPUTER KEYBOARDING

1385 P	1- 3	ARR	ARR	AAR 110	GAITHER M
--------	------	-----	-----	---------	-----------

This course is graded on a Pass/Fail basis only. Students must sign up for orientation in AAR 109, Lab 5. Please allow one hour for this orientation.

BTEC 105 KEYBOARD SPEED/ACCURACY

1390 P	1- 4	ARR	ARR	AAR 110	GAITHER M
--------	------	-----	-----	---------	-----------

This course is graded on a Pass/Fail basis only.

BTEC 111 WORD PROCESSING I

1395 A	5	TTh	9:00a.m.-11:00a.m.	AAR 105	GAITHER M
--------	---	-----	--------------------	---------	-----------

Hybrid class; partially online.

BTEC 130 ELECTRONIC CALCULATORS

1410 P	1- 2	ARR	ARR	AAR 110	LEMMONS N
--------	------	-----	-----	---------	-----------

No computer lab fee.

Course # Course Name

▽ Item#	Sec.#	Cred.#	Days	Time	Place	Instructor
---------	-------	--------	------	------	-------	------------

BTEC 131 INTRODUCTION TO SPREADSHEETS

▽ 1415 A 5 MW 9:00a.m.-10:25a.m. AAR 109E LEMMONS N
Prerequisite: BTEC 104 or CS 110, Math 089 or BUS 104, or instructor permission.
Hybrid class; partially online.

▽ 1420 DE 5 ARR ARR ARR LEMMONS N
Prerequisite: BTEC 104 or CS 110, Math 089 or BUS 104, or instructor permission.
Online class.

BTEC 141 INTRODUCTION TO DATABASE APPLICATIONS

▽ 1430 A 5 TTh 9:00a.m.-10:25a.m. AAR 109E LEMMONS N
Prerequisite: BTEC 131 with a grade of C or better, or instructor permission.
Hybrid class; partially online.

BTEC 144 ONENOTE FUNDAMENTALS

▽ 1435 P 1 ARR ARR AAR 110 LEMMONS N

BTEC 145 INTRODUCTION TO MS WORD

▽ 1440 P 1-5 ARR ARR AAR 110 LEMMONS N

BTEC 146 FUNDAMENTALS OF POWERPOINT

▽ 1445 P 1-2 ARR ARR AAR 110 LEMMONS N

BTEC 147 INTRODUCTION TO DESKTOP PUBLISHING

▽ 1450 P 1-3 ARR ARR AAR 110 GAITHER M

BTEC 148 INTRODUCTION TO OUTLOOK

▽ 1455 DE 2 ARR ARR ARR BENNETT S
Online class.

BTEC 149 INTERNET FUNDAMENTALS

▽ 1465 P 1 ARR ARR AAR 110 GAITHER M
© Uses Alternative Educational Resources.

BTEC 150 INTRODUCTION TO GOOGLE APPS

▽ 1475 P 1-3 ARR ARR AAR 110 GAITHER M
© Uses Alternative Educational Resources.

BTEC 155 WEBSITE MANAGEMENT

▽ 1480 P 3 ARR ARR AAR 110 GAITHER M
© Uses Alternative Educational Resources.

BTEC 156 INTRODUCTION TO MS VISIO

▽ 1485 P 2 ARR ARR AAR 110 LEMMONS N

BTEC 157 INTRODUCTION TO MS PROJECT

▽ 1490 P 2 ARR ARR AAR 110 LEMMONS N

BTEC 164 LEGAL ASPECTS OF THE MEDICAL OFFICE

▽ 1500 P 1-2 ARR ARR AAR 110 LEMMONS N
No computer lab fee.

BTEC 165 CULTURAL AWARENESS FOR CARE PROFESSIONALS

▽ 1505 A 5 MW 3:30p.m.-5:00p.m. HSB 106 GAITHER M
Hybrid class; partially online. © Uses Alternative Educational Resources.

BTEC 172 MEDICAL OFFICE PROCEDURES

▽ 1515 A 3 TTh 1:00p.m.-2:15p.m. HSB 248 MILLUS N
▽ 1520 B 3 TTh 2:30p.m.-3:45p.m. HSB 248 MILLUS N

BTEC 181 MEDICAL TERMINOLOGY I

▽ 1535 DE 3 ARR ARR ARR RUIZ D
Online class. No computer lab fee.

BTEC 182 MEDICAL TERMINOLOGY II

▽ 1540 DE 3 ARR ARR ARR RUIZ D
Online class.

BTEC 260 OFFICE PROCEDURES

▽ 1550 A 5 M 1:00p.m.-3:00p.m. AAR 142 GAITHER M
Prerequisite: ENGL& 101 or BUS 119, BUS 104 and BTEC 104 with a grade of C or better, or instructor permission.
Hybrid class; partially online.

BTEC 294 CAREER SUCCESS

▽ 1570 A 2 W 12:00p.m.-12:50p.m. AAR 102 BENNETT S
Hybrid class; partially online.

BTEC 299 INDEPENDENT STUDY

1580 P 1-10 ARR ARR ARR STAFF
Instructor permission required to enroll.

EVENING CLASSES**BTEC 162 INTRODUCTION TO ICD-10 CODING**

▽ 1495 N 5 MW 5:30p.m.-7:30p.m. AAR 103 REIN J
Prerequisite: BTEC 161 with a grade of C or better or instructor permission.
Hybrid class; partially online.

Chemical Dependency**EVENING CLASSES****CDS 102 INTRODUCTION TO THEORIES/COUNSELING**

1715 N 3 T 6:00p.m.-8:40p.m. HSB 123 WALTZ M
Prerequisite: CDS 101 with a C or better.

CDS 105 CHEMICALLY DEPENDENCY/DOMESTIC VIOLENCE

1720 N 3 Th 5:30p.m.-8:10p.m. HSB 104 MILLER S

CDS 114 SUICIDE ASSESSMENT AND PREVENTION

1725 N 2 F 5:00p.m.-8:00p.m. VOC 112 MCDANIEL J
Class will meet on Friday, January 11 and January 25 from 5:00p.m.-8:00p.m. and Saturday, January 12 and January 26 from 9:00a.m.-4:40p.m.

CDS 121 LEGAL AND ETHICAL ISSUES - CDS

1730 N 3 M 6:00p.m.-8:40p.m. HSB 123 BOLERJACK J

CDS 203 RELAPSE PREVENTION AND INTERVENTION

1735 N 3 W 6:00p.m.-8:40p.m. HSB 107 WALTZ M

Chemistry**CHEM& 100 PREPARATORY CHEMISTRY**

▽ 1770 A 5 MWF 10:30a.m.-11:55a.m. HSB 123 HERBELIN A
© Uses Alternative Educational Resources.

▽ 1775 DE 5 ARR ARR ARR PECORE J
Online class. © Uses Alternative Educational Resources.

CHEM& 110 CHEMICAL CONCEPTS W/LAB

NSL

▽ 1773 A 5 TTh 11:00a.m.-2:00p.m. HSB 329 HERBELIN A
Lab included. Lab Fee: \$15.00 © Uses Alternative Educational Resources.

▽ 1780 DE 5 ARR ARR ARR PECORE J
Exams must be proctored for this course, using either the LCC testing center or the online option ProctorU, contact the instructor for more information. CHEM& 110 Lab costs \$25.00. © Uses Alternative Educational Resources.
Online class.

Course # Course Name

Item#	Sec.#	Cred.#	Days	Time	Place	Instructor
-------	-------	--------	------	------	-------	------------

CHEM& 121 INTRODUCTION TO CHEMISTRY

NSL

1790 A 5 MWF 10:00a.m.-11:00a.m. HSB 101 WOLFER A

Students must also enroll in CHEM& 121 LA OR LB.

Lab Fee: \$15.00 ☉ Uses Alternative Educational Resources.

1795 DE	5	ARR	ARR		ARR	PECORE J
---------	---	-----	-----	--	-----	----------

CHEM 121 DE includes a lab component which you must complete by using the SP-3005-CK-01 LabPaq. (\$100) Forming lab teams to share cost is encouraged. Details are on Canvas. Course text cost \$29.00 from Flatworld Knowledge. Tests must be proctored.

Online class. ☉ Uses Alternative Educational Resources.

CHEM& 121 INTRODUCTION TO CHEMISTRY—LAB

1800 LA 0 Th 9:00a.m.-11:50a.m. HSB 332 WOLFER A

1805 LB 0 Th 1:30p.m.-4:20p.m. HSB 332 MCCORMICK C

CHEM& 161 GENERAL CHEMISTRY I

NSL

1810 A 5 MWF 1:00p.m.-2:00p.m. HSB 107 WOLFER A

Students must also enroll in lab section CHEM& 161 LA.

Lab Fee: \$26.90

CHEM& 161 GENERAL CHEMISTRY I—LAB

1815 LA 0 W 2:30p.m.-5:20p.m. HSB 332 WOLFER A

CHEM& 162 GENERAL CHEMISTRY

NSL

1820 A 5 MWF 8:55a.m.-9:55a.m. HSB 101 WOLFER A

Students must also enroll for one of the lab sections, CHEM& 162 LA or LB.

Lab Fee: \$26.90

CHEM& 162 GENERAL CHEMISTRY—LAB

1825 LA 0 T 8:00a.m.-10:50a.m. HSB 332 WOLFER A

1835 LB 0 M 2:30p.m.-5:20p.m. HSB 332 WOLFER A

CHEM& 262 ORGANIC CHEMISTRY II

NSL

1840 A	5	MWF	9:00a.m.-9:50a.m.	HSB 104	HERBELIN A
--------	---	-----	-------------------	---------	------------

Students must also enroll in the lab section CHEM& 262 LA.

Lab Fee: \$26.90

CHEM& 262 ORGANIC CHEMISTRY II—LAB

1845 LA 0 MW 2:30p.m.-4:20p.m. HSB 329 HERBELIN A

College Success

COLL 101 FIRST YEAR SEMINAR I

2220 A	2	TTh	9:00a.m.-9:50a.m.	DTV 214	AKINS-FIELDS
--------	---	-----	-------------------	---------	--------------

2225 B	2	TTh	11:00a.m.-11:50a.m.	VOC 112	HAYNES J
--------	---	-----	---------------------	---------	----------

2230 C	2	MW	1:00p.m.-1:50p.m.	HSB 106	HAYNES J
--------	---	----	-------------------	---------	----------

2235 DE	2	ARR	ARR	ARR	ENGEL E
---------	---	-----	-----	-----	---------

Online class.

COLL 102 FIRST YEAR SEMINAR II

2245 A	2	MW	8:00a.m.-8:50a.m.	AAR 123	AKINS-FIELDS
--------	---	----	-------------------	---------	--------------

2250 B	2	TTh	1:00p.m.-1:50p.m.	HSB 106	HAYNES J
--------	---	-----	-------------------	---------	----------

2255 C	2	TTh	11:00a.m.-11:50a.m.	DTV 214	MILLER R
--------	---	-----	---------------------	---------	----------

2260 DE	2	ARR	ARR	ARR	ENGEL E
---------	---	-----	-----	-----	---------

Online class.

COLL 108 SERVICE LEARNING FOR INTERNATIONAL STUDENTS

2265 A 3 MWF 1:00p.m.-1:50p.m. SCI 107 HEARN F

Communication Studies

CMST 127 COMPETITIVE PUBLIC SPEAKING

2125 A 2 MW 4:00p.m.-5:40p.m. RCA 141 BREHM A

☉ Course is clustered with other class sections that meet at the same time, in the same classroom.

CMST 137 INTERCOLLEGIATE DEBATE

2130 A 2 MW 4:00p.m.-5:15p.m. RCA 141 BREHM A

☉ Course is clustered with other class sections that meet at the same time, in the same classroom.

CMST& 210 INTERPERSONAL COMMUNICATION

H

2150 DE	5	ARR	ARR	ARR	NEILL S
---------	---	-----	-----	-----	---------

Online class.

CMST& 220 PUBLIC SPEAKING

H

2155 A	5	MW	8:30a.m.-10:45a.m.	RCA 220	NEILL S
--------	---	----	--------------------	---------	---------

☉ Uses Alternative Educational Resources.

2165 C	5	TTh	8:30a.m.-10:45a.m.	RCA 220	BREHM A
--------	---	-----	--------------------	---------	---------

2170 D	5	TTh	1:30p.m.-3:45p.m.	RCA 220	BREHM A
--------	---	-----	-------------------	---------	---------

2175 DE	5	ARR	ARR	ARR	GORDON S
---------	---	-----	-----	-----	----------

This is an online course. You will be required to record your speeches in front of an audience you provide. Please contact the instructor for more information.

Online class. ☉ Uses Alternative Educational Resources.

2180 DE1	5	ARR	ARR	ARR	GORDON S
----------	---	-----	-----	-----	----------

This is an online course. You will be required to record your speeches in front of an audience you provide. Please contact the instructor for more information.

Online class. ☉ Uses Alternative Educational Resources.

2185 E	5	MW	11:00a.m.-1:15p.m.	RCA 220	NEILL S
--------	---	----	--------------------	---------	---------

☉ Uses Alternative Educational Resources.

CMST 227 COMPETITIVE PUBLIC SPEAKING

2135 A 2 MW 4:00p.m.-5:40p.m. RCA 141 BREHM A

☉ Course is clustered with other class sections that meet at the same time, in the same classroom.

CMST& 230 SMALL GROUP COMMUNICATION

H

2190 A	5	TTh	11:00a.m.-1:15p.m.	RCA 220	CAPELL J
--------	---	-----	--------------------	---------	----------

2195 DE	5	ARR	ARR	ARR	GORDON S
---------	---	-----	-----	-----	----------

Online class.

CMST 237 INTERCOLLEGIATE DEBATE

2140 A 2 MW 4:00p.m.-5:15p.m. RCA 141 BREHM A

☉ Course is clustered with other class sections that meet at the same time, in the same classroom.

CMST 250 INTERCULTURAL COMMUNICATION:DIV

D,H

2145 A	5	TTh	8:30a.m.-10:45a.m.	RCA 139	NEILL S
--------	---	-----	--------------------	---------	---------

☉ Uses Alternative Educational Resources.

Computer Science

Unless noted otherwise, a computer lab fee is charged for all Computer Science classes.

CS 110 INTRODUCTION TO MICROCOMPUTER APPLICATIONS

2270 A	3	MW	1:00p.m.-2:15p.m.	AAR 109E	BENNETT S
--------	---	----	-------------------	----------	-----------

2275 B	3	TTh	11:00a.m.-12:15p.m.	AAR 105	BENNETT S
--------	---	-----	---------------------	---------	-----------

2285 DE	3	ARR	ARR	ARR	ROSI D
---------	---	-----	-----	-----	--------

No computer lab fee.

Online class.

Course # Course Name

▽ Item#	Sec.#	Cred.#	Days	Time	Place	Instructor
---------	-------	--------	------	------	-------	------------

CS 170 PROGRAMMING FUNDAMENTALS

2300 A 5 MWF 10:30a.m.-12:10p.m. AAR 105 DERKACHT D

Prerequisite: MATH 089 with a grade of C or better and knowledge of Windows or instructor permission. © Uses Alternative Educational Resources.

CS 208 INTRODUCTION TO MANAGEMENT INFORMATION SYSTEMS

▽ 2305 A 5 MWF 1:30p.m.-2:20p.m. AAR 102 ROSI D

Hybrid class; partially online.

CS 275 OBJECT-ORIENTED PROGRAMMING IN JAVA

2310 A 5 MWF 1:30p.m.-2:55p.m. AAR 105 DERKACHT D

Prerequisite: CS 170 with a grade of C or better or instructor permission.

Cooperative Education

LCC's Cooperative Education Program enables students to earn college credit through supervised, work-based learning experience.

This program integrates theories, concepts and methods studied in the classroom with practical skills gained in the workplace. Students may earn one credit for every 33 hours of approved work experience. There is a limit of 1-5 credits per quarter, depending upon specific degree requirements.

To enroll in a Cooperative Education program, students must have prior permission from an instructor in the appropriate program and the Career Connected Learning Coordinator. For information, contact Brian DelMar at 360.442.2610 or bdelmar@lowercolumbia.edu, or stop by the Corporate & Continuing Education Office, Don Talley Building, Room 105.

Cooperative Education students must attend a mandatory orientation. Orientations will be held by appointment only. Please contact Brian DelMar to make an appointment.

A \$14.30 lab fee will be charged for all 288 classes.

ACCT 288	0895	CS 288	2315	LIBR 288	3795
ACCT 289	0900	CS 289	2320	LIBR 289	3800
AH 288	0940	CJ 288	1890	MASP 288	3895
AH 289	0945	CJ 289	1895	MASP 289	3900
AMTC 288	0975	ECED 288	2470	MATH 288	4230
AMTC 289	0980	ECED 289	2475	MATH 289	4235
ART 288	1110	EDUC 288	2560	MEDA 288	4380
ART 289	1115	EDUC 289	2565	MEDA 289	4385
BIOL 288	1190	ENGR 288	2890	MUSC 288	4790
BUS 288	1675	ENGR 289	2895	MUSC 289	4795
BUS 289	1680	ENVS 288	2925	PHED 288	5135
BTEC 288	1560	ENVS 289	2930	PHED 289	5140
BTEC 289	1565	FISC 288	3050	PSYC 288	5290
CDS 288	1740	FISC 289	3065	PSYC 289	5295
CDS 289	1745	HLTH 288	3245	SPAN 288	5440
CHEM 288	1755	HLTH 289	3250	WELD 288	5910
CHEM 289	1760	HDEV 288	3130	WELD 289	5915
CMST 288	5515	HDEV 289	3135		
CMST 289	5520				

Criminal Justice

CJ 154 AMERICAN LEGAL SYSTEM▽ 1860 DE 5 ARR ARR ARR QUIRK A
Online class.**CJ 180 REPORT WRITING FOR LAW**▽ 1865 A 5 MW 1:30p.m.-2:20p.m. MAN 146 QUIRK A
Hybrid class; partially online.**CJ 184 ADMINISTRATION OF JUSTICE**

1875 A 5 TTh 1:30p.m.-3:45p.m. MAN 235 QUIRK A

Diesel/Heavy Equipment Technology

There is a fee of \$13.50 per student per quarter for all DHET classes.

DHET 104 ELECTRICAL SYSTEMS

2325 A 15 MTWTh 7:30a.m.-12:00p.m. DTV 106A ECKLUND K

Prerequisite: MFG 105 Industrial Safety, HLTH 105 First Aid/CPR/Blood Borne Pathogens.

DHET 210 DIESEL ENGINE REBUILD

2345 A 15 MTWTh 12:00p.m.-4:30p.m. DTV 123 DILLINGER J

DHET 228 COMMERCIAL DRIVING

2350 CE 4 ARR ARR DTV 201 DILLINGER J

For details contact Heidi Hamer, 360.442.2603, hhmer@lowercolumbia.edu.

More information can be found in the Corporate & Continuing Education section of this schedule.

DHET 229 COMMERCIAL TRUCK OPERATION

2360 DE 6 ARR ARR ARR STAFF

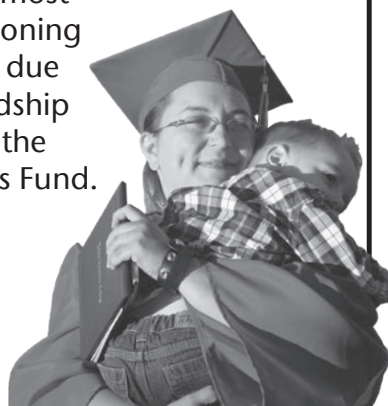
DHET 299 INDEPENDENT STUDY

2370 MM1-3 ARR ARR ARR DILLINGER J

Instructor permission required to enroll.

You Can Make a Difference!

Help a student most at risk of abandoning their education due to financial hardship by donating to the Student Success Fund.



lowercolumbia.edu/foundation
or call 360.442.2130 to learn more

Course # Course Name

▽ Item# Sec.# Cred.# Days Time Place Instructor

Drama

DRMA& 101 INTRODUCTION TO THEATRE

H

▽ 2420 A 5 MWF 10:30a.m.-11:55a.m. RCA 139 RICHARD B
 ☉ Uses Alternative Educational Resources.

DRMA 107 INTRODUCTION TO ACTING II

H,P

▽ 2385 A 5 MWF 1:30p.m.-2:55p.m. RCA 139 RICHARD B
 ☒ Course is clustered with other class sections that meet at the same time, in the same classroom. ☉ Uses Alternative Educational Resources.

DRMA 116 STAGE CRAFTS I

2390 A 5 TTh 1:30p.m.-3:45p.m. RCA 148 COCHRAN R
 ☒ Course is clustered with other class sections that meet at the same time, in the same classroom. ☉ Uses Alternative Educational Resources.

DRMA 117 STAGE CRAFTS II

2395 A 5 TTh 1:30p.m.-3:45p.m. RCA 148 COCHRAN R
 ☒ Course is clustered with other class sections that meet at the same time, in the same classroom. ☉ Uses Alternative Educational Resources.

DRMA 118 STAGE CRAFTS III

2400 A 5 TTh 1:30p.m.-3:45p.m. RCA 148 COCHRAN R
 ☒ Course is clustered with other class sections that meet at the same time, in the same classroom. ☉ Uses Alternative Educational Resources.

DRMA 207 ACTING II

P

▽ 2410 A 5 MWF 1:30p.m.-2:55p.m. RCA 139 RICHARD B
 ☒ Course is clustered with other class sections that meet at the same time, in the same classroom. ☉ Uses Alternative Educational Resources.

EVENING CLASSES

DRMA 197 REHEARSAL & PERFORMANCE II

P

▽ 2405 N 1-5 ARR 4:00p.m.-7:30p.m. RCA 131 RICHARD B
 Enrollment restricted to students in current production. ☒ Course is clustered with other class sections that meet at the same time, in the same classroom.

DRMA 297 REHEARSAL & PERFORMANCE V

P

▽ 2415 N 1-5 ARR 4:00p.m.-7:30p.m. RCA 131 RICHARD B
 Enrollment restricted to students in current production. ☒ Course is clustered with other class sections that meet at the same time, in the same classroom.

Early Childhood Education

ECED& 100 CHILD CARE BASICS

▽ 2480 DE 3 ARR ARR ARR JACKSON M
 Online class.

ECED& 105 INTRODUCTION EARLY CHILDHOOD EDUCATION

▽ 2485 A 5 W 12:00p.m.-1:30p.m. SCI 102 ZBAEREN J
 Hybrid class; partially online.

ECED& 120 PRACTICUM-NURTURING RELATIONSHIPS

▽ 2500 DE 2 ARR ARR ARR JACKSON M
 A tuberculosis test is required prior to participation in practicum or clinical classes. This course requires 33 clinical hours-field experience.
 Online class.

ECED& 132 INFANTS/TODDLERS CARE

▽ 2503 DE 3 ARR ARR ARR ZBAEREN J
 Online class.

ECED& 134 FAMILY CHILD CARE

▽ 2515 DE 3 ARR ARR ARR AKINS-FIELDS
 Online class.

ECED 170 ENVIRONMENTS YOUNG CHILD

▽ 2425 A 3 T 12:00p.m.-1:30p.m. SCI 102 ZBAEREN J
 Hybrid class; partially online.

ECED 204 MUSIC AND MOVEMENT FOR YOUNG CHILDREN

▽ 2435 A 3 M 3:00p.m.-5:30p.m. SCI 102 JACKSON M

ECED 220 ARTS & CRAFTS FOR YOUNG CHILDREN

▽ 2450 A 3 T 3:00p.m.-5:00p.m. SCI 102 ZBAEREN J
 Hybrid class; partially online.

ECED 262 PRACTICUM V/PRACTICE

▽ 2460 A 3 M 12:00p.m.-1:00p.m. SCI 102 WILLIAMSON A
 Prerequisite: ENGL& 101, all ECED 100-level courses and EDUC& 115 with a grade of C or better. Students will arrange additional hours with instructor.

Earth Science

ERSI 105 EARTH SYSTEMS

NSL

▽ 2935 DE 5 ARR ARR ARR BARD E
 Online class. Lab included. There is no lab fee charged for this class.
 ☉ Uses Alternative Educational Resources.

Economics

ECON 105 INTRODUCTION TO ECONOMICS

SS

▽ 2525 A 5 MTWTh 11:00a.m.-11:50a.m. MAN 234 FRANZ J
 Hybrid class; partially online. ☉ Uses Alternative Educational Resources.
 ▽ 2530 DE 5 ARR ARR ARR FRANZ J
 Online class. ☉ Uses Alternative Educational Resources.

ECON& 201 MICRO ECONOMICS

SS

▽ 2535 A 5 TTh 9:00a.m.-10:25a.m. HSB 105 FRANZ J
 Hybrid class; partially online. ☉ Uses Alternative Educational Resources.

ECON& 202 MACRO ECONOMICS

SS

▽ 2540 DE 5 ARR ARR ARR FRANZ J
 Contact the instructor at jfranz@lowercolumbia.edu for more information.
 Online class. ☉ Uses Alternative Educational Resources.

Education

EDUC& 204 INCLUSIVE EDUCATION-BIRTH THROUGH 21 FOCUS

▽ 2580 A 5 Th 4:00p.m.-6:30p.m. SCI 102 ZBAEREN J
 Hybrid class; partially online.

EDUC& 205 INTRODUCTION TO EDUCATION W/FIELD EXPERIENCE:DIV

D

▽ 2585 A 5 MW 10:00a.m.-11:30a.m. SCI 102 WILLIAMSON A
 This class includes participation in actual elementary classrooms in addition to class meeting times.

Course # Course Name

Item#	Sec.#	Cred.#	Days	Time	Place	Instructor
-------	-------	--------	------	------	-------	------------

Engineering

Unless otherwise noted, a computer lab fee is charged for all Engineering classes.

ENGR& 121 ENGINEERING GRAPHICS I

2900 A	1-3 MW	4:00p.m.-6:15p.m.	VOC 113	ROGERS K
--------	--------	-------------------	---------	----------

⊗ Course is clustered with other class sections that meet at the same time, in the same classroom.

ENGR& 122 ENGINEERING GRAPHICS II

2905 A	1-3 MW	4:00p.m.-6:15p.m.	VOC 113	ROGERS K
--------	--------	-------------------	---------	----------

Prerequisite: ENGR& 121 or instructor permission. A computer lab fee will be charged. ⊗ Course is clustered with other class sections that meet at the same time, in the same classroom.

ENGR& 123 ENGINEERING GRAPHICS III

2910 A	1-3 MW	4:00p.m.-6:15p.m.	VOC 113	ROGERS K
--------	--------	-------------------	---------	----------

Prerequisite: ENGR& 121 and ENGR& 122 or instructor permission. ⊗ Course is clustered with other class sections that meet at the same time, in the same classroom.

ENGR 206 MICROPROCESSOR SYSTEMS

2885 A	5 MW	3:00p.m.-6:15p.m.	AAR 105	DERKACHT D
--------	------	-------------------	---------	------------

ENGR& 215 DYNAMICS

2915 A	5 MWF	7:30a.m.-8:55a.m.	HSB 135	MORRISON D
--------	-------	-------------------	---------	------------

English

ENGL 096 READING WORKSHOP I

2590 A	2 MWF	3:00p.m.-3:50p.m.	MAN 146	LEACH M
--------	-------	-------------------	---------	---------

⊗ Course is clustered with other class sections that meet at the same time, in the same classroom.

ENGL 097 READING WORKSHOP II

2595 A	2 MWF	3:00p.m.-3:50p.m.	MAN 146	LEACH M
--------	-------	-------------------	---------	---------

⊗ Course is clustered with other class sections that meet at the same time, in the same classroom.

ENGL 098 COLLEGE READY ENGLISH I

2600 A	5 DAILY	9:00a.m.-9:50a.m.	AAR 129	HAYNES J
--------	---------	-------------------	---------	----------

Ⓢ Uses Alternative Educational Resources.

2605 DE	5 ARR	ARR	ARR	CONNOLLY B
---------	-------	-----	-----	------------

Online class. ⊗ Course is clustered with other class sections that meet at the same time, in the same classroom. Ⓢ Uses Alternative Educational Resources.

2610 F	5 DAILY	10:00a.m.-10:50a.m.	AAR 129	HAYNES J
--------	---------	---------------------	---------	----------

Ⓢ Uses Alternative Educational Resources.

2615 G	5 DAILY	11:00a.m.-11:50a.m.	AAR 129	CONNOLLY B
--------	---------	---------------------	---------	------------

Ⓢ Uses Alternative Educational Resources.

2625 K	5 DAILY	12:00p.m.-12:50p.m.	AAR 129	CONNOLLY B
--------	---------	---------------------	---------	------------

⊗ Course is clustered with other class sections that meet at the same time, in the same classroom. Ⓢ Uses Alternative Educational Resources.

ENGL 099 COLLEGE-READY ENGLISH II

2640 DE	5 ARR	ARR	ARR	CONNOLLY B
---------	-------	-----	-----	------------

Online class. ⊗ Course is clustered with other class sections that meet at the same time, in the same classroom. Ⓢ Uses Alternative Educational Resources.

2645 E	5 DAILY	11:00a.m.-11:50a.m.	AAR 104	RISTER M
--------	---------	---------------------	---------	----------

Ⓢ Uses Alternative Educational Resources.

ENGL& 101 ENGLISH COMPOSITION I

2730 B	5 TTh	11:00a.m.-1:15p.m.	AAR 130	TOWER C
--------	-------	--------------------	---------	---------

2735 C	5 MW	1:30p.m.-3:45p.m.	AAR 130	RISTER M
--------	------	-------------------	---------	----------

Ⓢ Uses Alternative Educational Resources.

2750 DE	5 ARR	ARR	ARR	NORWOOD K
---------	-------	-----	-----	-----------

Ⓢ Uses Alternative Educational Resources.

Online class.

2755 DE1	5 ARR	ARR	ARR	HEGMANN E
----------	-------	-----	-----	-----------

Online class. Ⓢ Uses Alternative Educational Resources.

2760 E	5 TTh	8:30a.m.-10:45a.m.	AAR 128	TOWER C
--------	-------	--------------------	---------	---------

2765 F	5 MWF	9:00a.m.-10:25a.m.	MAN 146	LEAVENS A
--------	-------	--------------------	---------	-----------

2770 G	5 MW	11:00a.m.-1:15p.m.	MAN 147	NORWOOD K
--------	------	--------------------	---------	-----------

Ⓢ Uses Alternative Educational Resources.

2775 H	5 MW	1:30p.m.-3:45p.m.	MAN 147	NORWOOD K
--------	------	-------------------	---------	-----------

Ⓢ Uses Alternative Educational Resources.

2780 I	5 TTh	1:30p.m.-3:45p.m.	AAR 130	NORWOOD K
--------	-------	-------------------	---------	-----------

Ⓢ Uses Alternative Educational Resources.

2785 J	5 MW	11:00a.m.-1:15p.m.	AAR 106	MCGUIRE L
--------	------	--------------------	---------	-----------

2790 K	5 MWF	12:00p.m.-1:25p.m.	AAR 104	LEAVENS A
--------	-------	--------------------	---------	-----------

ENGL& 102 COMPOSITION II**HA**

2795 A	5 MW	8:30a.m.-10:45a.m.	AAR 130	HULL K
--------	------	--------------------	---------	--------

2800 B	5 TTh	11:00a.m.-1:15p.m.	AAR 128	LEAVENS A
--------	-------	--------------------	---------	-----------

Lab Fee: \$10.00 Ⓢ Uses Alternative Educational Resources.

2805 DE	5 ARR	ARR	ARR	LEAVENS A
---------	-------	-----	-----	-----------

Online class. Lab Fee: \$10.00 Ⓢ Uses Alternative Educational Resources.

2810 DE1	5 ARR	ARR	ARR	MCCARTHY D
----------	-------	-----	-----	------------

Online class.

2815 DE2	5 ARR	ARR	ARR	MCCARTHY D
----------	-------	-----	-----	------------

Online class.

2820 DE3	5 ARR	ARR	ARR	DIGERLANDO N
----------	-------	-----	-----	--------------

Online class. Ⓢ Uses Alternative Educational Resources.

2835 DE4	5 ARR	ARR	ARR	LEAVENS A
----------	-------	-----	-----	-----------

Online class. Lab Fee: \$10.00 Ⓢ Uses Alternative Educational Resources.

2825 E	5 TTh	11:00a.m.-1:15p.m.	AAR 123	BAUER H
--------	-------	--------------------	---------	---------

Ⓢ Uses Alternative Educational Resources.

2830 F	5 TTh	8:30a.m.-10:45a.m.	VOC 112	DAWKINS W
--------	-------	--------------------	---------	-----------

2840 G	5 MW	1:30p.m.-3:45p.m.	AAR 110C	DIGERLANDO N
--------	------	-------------------	----------	--------------

Ⓢ Uses Alternative Educational Resources.

2845 H	5 TTh	11:00a.m.-1:15p.m.	VOC 111	DAWKINS W
--------	-------	--------------------	---------	-----------

2850 I	5 MW	11:00a.m.-1:15p.m.	AAR 110C	DIGERLANDO N
--------	------	--------------------	----------	--------------

Ⓢ Uses Alternative Educational Resources.

3012 IS	5 MTWTh	9:00a.m.-11:40a.m.	MAN 119	LEMIERE A
---------	---------	--------------------	---------	-----------

Integrative Studies: The Artistic "I"/eye. Students must enroll in ENGL& 102 IS (#3012) and ART 106 IS (#1030) or ART 107 IS (#1035) a total of 10 credits.

Ⓢ Uses Alternative Educational Resources.

2855 J	5 MW	8:30a.m.-10:45a.m.	AAR 128	BAUER H
--------	------	--------------------	---------	---------

2860 K	5 MW	11:00a.m.-1:15p.m.	AAR 130	HULL K
--------	------	--------------------	---------	--------

2865 M	5 TTh	8:30a.m.-10:45a.m.	PSC 102	MCGUIRE L
--------	-------	--------------------	---------	-----------

ENGL 106 NW VOICES CREATIVE WRITING**H**

2675 A	2 W	11:00a.m.-1:15p.m.	AAR 146	BAUER H
--------	-----	--------------------	---------	---------

ENGL 110 INDUSTRIAL COMMUNICATION

2680 A	5 TTh	1:30p.m.-3:45p.m.	AAR 128	DIGERLANDO N
--------	-------	-------------------	---------	--------------

ENGL 125 ARTS MAGAZINE PUBLICATION II**H,P**

2685 A	2 F	1:00p.m.-3:40p.m.	MAN 118	LEMIERE A
--------	-----	-------------------	---------	-----------

Students must arrange one additional hour lab time per week. ⊗ Course is clustered with other class sections that meet at the same time, in the same classroom. Ⓢ Uses Alternative Educational Resources.

Winter Events at Lower Columbia College

ROSE CENTER FOR THE ARTS

ART GALLERY

Hart James

October 31 - November 29
Reception: Oct. 30, 4-6 p.m.

...

Paulette Landers &
Claire B. Jones

January 9 - 31
Reception: Jan. 8, 4-6 p.m.

...

Print Arts NW

February 27 - March 21
Reception: Feb. 26, 4-6 p.m.

lowercolumbia.edu/gallery

THEATRE

The Importance of Being Earnest by Oscar Wilde

February 22, 23, 28
March 1, 2 at 7:30 p.m.

February 24 at 2:00 p.m.

March 1 at 11 a.m.

Auditions:
December
5 & 6,
4-7 p.m.

Center Stage
Theatre

lowercolumbia.edu/aande

CONCERTS

Jazz Band
March 5

Symphonic Band
March 8

Choir Concert
March 15

Performances at 7:30 p.m.
Wollenberg Auditorium
lowercolumbia.edu/aande

National Theatre Live at the Rose Center for the Arts

Experience Britain's most acclaimed stage productions through National Theatre Live, a groundbreaking project to present world-class theatre in cinemas around the world.

Tickets available online and at Rose Center Box Office one hour prior to performance.

Visit lowercolumbia.edu/ntlive for more information, including a schedule of events.

**National
Theatre
Live**

Take college courses (tuition-free!) while in high school

Running Start is a statewide program—authorized by the Washington State Legislature—that allows high school juniors and seniors to attend LCC tuition free. Students can attend both their high school and LCC, or just LCC. Students receive both high school and college credit for classes completed at the college. College credits are paid for by the high school.

The decision to enroll in Running Start is made by students and their families.* Students coordinate with their high school advisors to ensure the classes they're taking fulfill high school graduation requirements. Students can participate in sports and other activities at their high schools while in Running Start.

Students in Running Start are responsible for mandatory fees, books and transportation to the campus. Many classes are available online as well as on campus.

Learn more at lowercolumbia.edu/running-start or call 360.442.2442.

* Please see lowercolumbia.edu/running-start for program eligibility requirements.



Don't let **DISTANCE** keep you from earning your **BACHELOR'S DEGREE** or Graduate

Earn your bachelor's or graduate degree through the Lower Columbia Regional University Center without leaving home. Dozens of degree options are available through a number of university partners. Flexible scheduling is available to help you balance work and family commitments while pursuing the degree that's right for you.

Learn more at lowercolumbia.edu/u-center or call 360.353.7800.

Course # Course Name

Item#	Sec.#	Cred.#	Days	Time	Place	Instructor
-------	-------	--------	------	------	-------	------------

ENGL 215 INTRODUCTION TO FILM STUDIES **H**

▽ 2710 A	5	TTh	11:00a.m.-1:15p.m.	HSB 107	HULL K
----------	---	-----	--------------------	---------	--------

ENGL 225 ARTS MAGAZINE PUBLICATION V **H,P**

▽ 2690 A	2	F	1:00p.m.-3:40p.m.	MAN 118	LEMIERE A
----------	---	---	-------------------	---------	-----------

Students must arrange one additional hour lab time per week. ☒ Course is clustered with other class sections that meet at the same time, in the same classroom. ☉ Uses Alternative Educational Resources.

ENGL 231 CREATIVE WRITING **H**

▽ 2695 A	5	TTh	8:30a.m.-10:45a.m.	AAR 130	HULL K
----------	---	-----	--------------------	---------	--------

☒ Course is clustered with other class sections that meet at the same time, in the same classroom.

ENGL 232 CREATIVE WRITING **H**

▽ 2700 A	5	TTh	8:30a.m.-10:45a.m.	AAR 130	HULL K
----------	---	-----	--------------------	---------	--------

☒ Course is clustered with other class sections that meet at the same time, in the same classroom.

ENGL 233 CREATIVE WRITING **H**

▽ 2705 A	5	TTh	8:30a.m.-10:45a.m.	AAR 130	HULL K
----------	---	-----	--------------------	---------	--------

☒ Course is clustered with other class sections that meet at the same time, in the same classroom.

ENGL& 235 TECHNICAL WRITING **H**

▽ 2875 DE	5	ARR	ARR	ARR	HAYNES J
-----------	---	-----	-----	-----	----------

This course is intended for students enrolled in Science, Business, and Computer Science programs.
Online class.

ENGL& 244 AMERICAN LITERATURE I **H**

▽ 2880 A	5	MWF	1:30p.m.-2:55p.m.	AAR 129	BAUER H
----------	---	-----	-------------------	---------	---------

ENGL 280 MULTICULTURAL LITERATURE:DIV **D,H**

▽ 2715 DE	5	ARR	ARR	ARR	MCCARTHY D
-----------	---	-----	-----	-----	------------

Online class.

EVENING CLASSES**ENGL& 102 COMPOSITION II** **HA**

▽ 2870 N	5	W	5:15p.m.-7:30p.m.	AAR 104	MCGUIRE L
----------	---	---	-------------------	---------	-----------

Hybrid class; partially online.

Environmental Science**ENVS 150 ENVIRONMENT AND SOCIETY:DIV** **D,NS**

▽ 2920 DE	5	ARR	ARR	ARR	LAPIERRE L
-----------	---	-----	-----	-----	------------

Online class. ☉ Uses Alternative Educational Resources.

Geography**GEOG 105 PHYSICAL GEOGRAPHY** **NSL**

3080 A	5	MW	12:00p.m.-1:15p.m.	HSB 139	SALISBURY M
		TTh	11:30a.m.-1:20p.m.	HSB 139	

Field trips may be required. Lab included.

Lab Fee: \$12.30

Geology**GEOL& 101 INTRODUCTION PHYSICAL GEOLOGY** **NSL**

3085 A	5	MW	2:00p.m.-3:15p.m.	HSB 139	SALISBURY M
		TTh	2:00p.m.-3:50p.m.	HSB 139	

Field trips may be required. Lab included.

Lab Fee: \$19.30

GEOL& 208 GEOLOGY OF THE PACIFIC NORTHWEST **NSL**

▽ 3090 DE	5	ARR	ARR	ARR	DAWES R
-----------	---	-----	-----	-----	---------

Lab included.

Online class.

Health

All Health 100 sections will be charged a \$12.50 fee.

HLTH 100 OCCUPATIONAL SAFETY AND HEALTH

▽ 3215 B	3	Th	1:30p.m.-2:45p.m.	DTV 202	JOHNSON B
----------	---	----	-------------------	---------	-----------

Hybrid class; partially online.

▽ 3220 HB	3	ARR	ARR	ARR	JOHNSON B
-----------	---	-----	-----	-----	-----------

The 1st Aid/CPR will be held on Saturday, January 12 from 8:00 a.m. - 5:00 p.m. in DTV 202.

Hybrid class; partially online.

HLTH 105 FIRST AID, CPR AND BLOODBORNE PATHOGENS

3225 A	1	F	3:00p.m.-4:50p.m.	DTV 202	JOHNSON B
--------	---	---	-------------------	---------	-----------

This class meets on Friday, Jan. 11, Jan. 18, Jan. 25, Feb. 1 and Feb. 8, 2019.

HLTH 106 HEALTH AND WELLNESS

▽ 3235 DE	2	ARR	ARR	ARR	ROSS E
-----------	---	-----	-----	-----	--------

Students must log into canvas for class instructions and syllabus.

Online class.

HLTH 245 HEALTH AND EXERCISE BEHAVIOR CHANGE

▽ 3240 A	3	TTh	10:00a.m.-11:20a.m.	GYM 212	ROSS E
----------	---	-----	---------------------	---------	--------

Hybrid class; partially online.

History**HIST& 127 WORLD CIVILIZATIONS II:DIV** **D,SS**

▽ 3155 A	5	TTh	8:30a.m.-10:45a.m.	MAN 146	SHAH C
----------	---	-----	--------------------	---------	--------

HIST& 136 US HISTORY 1 **SS**

▽ 3170 A	5	TTh	8:30a.m.-10:45a.m.	MAN 233	MAYFIELD S
----------	---	-----	--------------------	---------	------------

▽ 3180 DE	5	ARR	ARR	ARR	VAUGHN C
-----------	---	-----	-----	-----	----------

Online class.

HIST& 137 US HISTORY 2 **SS**

▽ 3185 A	5	MWF	1:30p.m.-2:55p.m.	MAN 145	SHAH C
----------	---	-----	-------------------	---------	--------

▽ 3200 DE	5	ARR	ARR	ARR	SYRDAL D
-----------	---	-----	-----	-----	----------

Online class.

HIST 214 SPORTS IN AMERICAN HISTORY **SS**

▽ 3205 A	5	MWF	11:00a.m.-12:25p.m.	MAN 146	SHAH C
----------	---	-----	---------------------	---------	--------

HIST 254 HISTORY OF WASHINGTON AND THE PACIFIC NORTHWEST **SS**

▽ 3140 DE	5	ARR	ARR	ARR	VAUGHN C
-----------	---	-----	-----	-----	----------

Online class.

Humanities

HUM 104 ETHICS AND CULTURAL VALUES:DIV **D,H**
 3555 A 5 DAILY 10:00a.m.-10:50a.m. MAN 147 LEACH M

HUM 106 COMMUNITY CONVERSATIONS
 3560 A 1 Th 12:00p.m.-12:50p.m. HSB 101 SHAH C

HUM 107 HOW TO SEE A PLAY **H**
 3565 A 1 ARR ARR ARR RICHARD B
 Contact instructor at brichard@lowercolumbia.edu for the class meeting dates.
 Class typically meets for the Thursday evening performance of the current production.

HUM& 117 HUMANITIES II **H**
 3595 A 5 MWF 1:30p.m.-2:55p.m. PSC 102 LEACH M

HUM 210 MYTH AND RITES:DIV **D**
 3502 DE 5 ARR ARR ARR LEACH M
 Online class.

HUM 230 THINKING ABOUT THINKING **H**
 3580 DE 5 ARR ARR ARR MCCARTHY D
 Online class.

HUM 250 ETHICS AND POLICY IN HEALTHCARE II **H**
 3585 DE 2 ARR ARR ARR STAFFORD K
 Instructor permission required to enroll. Restricted to Nursing students.
 Online class.
 3587 DE1 2 ARR ARR ARR STAFFORD K
 Instructor permission required to enroll. Restricted to Nursing students.
 Online class.

HUM 251 ETHICS AND POLICY IN HEALTHCARE III **H**
 3590 A 2 F ARR HSB 222B WARD A
 Instructor permission required to enroll. Restricted to Nursing students.
 Hybrid class; partially online. © Uses Alternative Educational Resources.

Information Technology

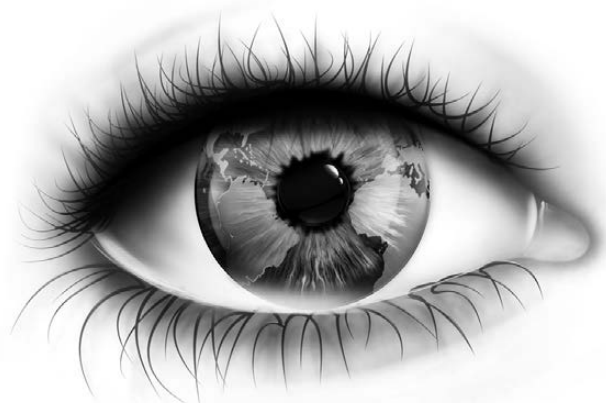
Unless noted otherwise, a computer lab fee is charged for all Information Technology classes.

IT 100 IT FUNDAMENTALS
 3760 A 5 Th 1:30p.m.-3:30p.m. VOC 119 RIJNHART S
 Students must log into class prior to first Thursday.
 Hybrid class; partially online.

IT 102 INTRODUCTION INTERNET THEORY/APP/WEB PAGE DESIGN
 3765 A 5 MWF 9:00a.m.-10:40a.m. AAR 110C ROSI D

IT 111 INTRO TO WINDOWS
 3770 A 4 TTh 11:00a.m.-1:15p.m. VOC 116 DERKACHT D

Integrative Studies



The Artistic “I”/eye

Monday-Thursday, 9 a.m.-11:40 a.m.

Instructors: Amber Lemiere, Michael Kohlmeier

This is a course for artists and creatives (and those who hesitate to wear these labels): a space to experiment with creative processes and develop personal projects integrating various art forms such as music, drawing, painting, architecture, theater, dance, and fashion... whatever you bring to the classroom and learning community. Together, we will ponder three timeless questions. What is art? What is the value of art? What is the value of the artist? We will regularly step out of our comfort zones as we work toward developing ways of seeing ourselves (the artistic “I”) and the world around us (the artistic “eye”).

In a commodity-based culture and a jobs-oriented educational system, finding time to prioritize *making* and *creating* seems rare. This is a unique opportunity to earn Communications and Humanities credits in a playful, thought-provoking, hands-on learning environment that just might bring to life the artist in you, and those around you.

Sign up for a total of 10 credits:

**ENGL& 102, item 3012,
 English Composition, 5 credits
 and**

**ART 106, item 1040,
 Basic Design, 5 credits**

or

**ART 107, item 1045,
 Basic Design I, 5 credits**

Course # Course Name

Item#	Sec.#	Cred.#	Days	Time	Place	Instructor
IT 141 PC TECHNICIAN I						
3780 A	4	MW	2:00p.m.-3:00p.m.	VOC 119	RIJNHART S	
Hybrid class; partially online.						
IT 212 INSTALLING & CONFIGURING WINDOWS SERVER						
3785 A	5	T	1:30p.m.-3:30p.m.	VOC 119	RIJNHART S	
Prerequisite: IT 211 with a grade of C or better, or instructor permission.						
Hybrid class; partially online.						
IT 294 CAREER SUCCESS						
3793 A	2	W	12:00p.m.-12:50p.m.	AAR 109E	BENNETT S	
Hybrid class; partially online.						

Machine Trades

There is a fee of \$3.00 per credit for all MASP classes.

MASP 107 MACHINING/RELATED OCCUPATIONS

3805 A 2-6 DAILY 8:00a.m.-11:00a.m. VOC 114 SHEPHERD N

Note: This course may be taken for 2-6 credits only. Students will arrange class schedule with instructor on 1st day of quarter. ☒ Course is clustered with other class sections that meet at the same time, in the same classroom.

MASP 111 MACHINE SHOP I

3815 A 2-10 DAILY 8:00a.m.-11:00a.m. VOC 114 SHEPHERD N

Note: This course may be taken for 2-10 credits only. Students will arrange class schedule with instructor on 1st day of quarter. ☒ Course is clustered with other class sections that meet at the same time, in the same classroom.

MASP 112 MACHINE SHOP II

3830 A 2-10 DAILY 8:00a.m.-11:00a.m. VOC 114 SHEPHERD N

Prerequisite: 10 credits of MASP 107 and/or MASP 111.

Note: This course may be taken for 2-10 credits only. Students will arrange class schedule with instructor on 1st day of quarter. ☒ Course is clustered with other class sections that meet at the same time, in the same classroom.

MASP 113 MACHINE SHOP III

3845 A 2-10 DAILY 8:00a.m.-11:00a.m. VOC 114 SHEPHERD N

Prerequisite: 10 credits of MASP 112.

Note: This course may be taken for 2-10 credits only. Students will arrange class schedule with instructor on 1st day of quarter. ☒ Course is clustered with other class sections that meet at the same time, in the same classroom.

MASP 204 CNC MACHINING CENTER FUNDAMENTALS

3870 MK 3 ARR ARR ARR TODD K

Please contact the instructor at 360.442.2745 or ktodd@lowercolumbia.edu for more information.

MASP 205 CNC TURNING CENTER FUNDAMENTALS

3875 MK 3 ARR ARR ARR TODD K

Please contact the instructor at 360.442.2745 or ktodd@lowercolumbia.edu for more information.

MASP 221 CNC MILLING

3880 A 2-10 DAILY 8:00a.m.-11:00a.m. VOC 114 TODD K

Prerequisite: MASP 204.

Note: This course may be taken for 2-10 credits only. Students will arrange class schedule with instructor on 1st day of quarter. ☒ Course is clustered with other class sections that meet at the same time, in the same classroom.

MASP 222 CNC TURNING

3885 A 2-10 DAILY 8:00a.m.-11:00a.m. VOC 114 TODD K

Prerequisite: MASP 205

Note: This course may be taken for 2-10 credits only. Students will arrange class schedule with instructor on 1st day of quarter. ☒ Course is clustered with other class sections that meet at the same time, in the same classroom.

MASP 223 ADVANCED CNC PROCESSES

3890 A 2-10 DAILY 8:00a.m.-11:00a.m. VOC 114 TODD K

Prerequisite: MASP 221 or MASP 222.

Note: This course may be taken for 2-6 credits only. Students will arrange class schedule with instructor on 1st day of quarter. ☒ Course is clustered with other class sections that meet at the same time, in the same classroom.

EVENING CLASSES

MASP 107 MACHINING/RELATED OCCUPATIONS

3810 N 2 W 6:00p.m.-9:00p.m. VOC 114 SHEPHERD N

☒ Course is clustered with other class sections that meet at the same time, in the same classroom.

MASP 111 MACHINE SHOP I

3825 N 2 W 6:00p.m.-9:00p.m. VOC 114 SHEPHERD N

☒ Course is clustered with other class sections that meet at the same time, in the same classroom.

MASP 112 MACHINE SHOP II

3840 N 2 W 6:00p.m.-9:00p.m. VOC 114 SHEPHERD N

Prerequisite: 10 credits of MASP 107 and/or MASP 111. ☒ Course is clustered with other class sections that meet at the same time, in the same classroom.

MASP 113 MACHINE SHOP III

3855 N 2 W 6:00p.m.-9:00p.m. VOC 114 SHEPHERD N

Prerequisite: 10 credits of MASP 112. ☒ Course is clustered with other class sections that meet at the same time, in the same classroom.



MATH BOOT CAMP

Save time, money and stress when you attend a Math Boot Camp. You can save up to \$573.95 if you test just one class higher! Best of all, it is FREE!

At the boot camp you will:

- Review important math concepts
- Learn test-taking strategies
- Discuss tips to overcoming math anxiety
- Learn about My Math Lab

Registration is required. Register online at lowercolumbia.edu/math-boot-camp, call 360.442.2353, or sign up in person at the Testing Office in the Admissions Center.

Single Evening Session

Tuesday, December 4

5-8 p.m.

Course # Course Name

Item#	Sec.#	Cred.#	Days	Time	Place	Instructor
-------	-------	--------	------	------	-------	------------

Manufacturing

MFG 100 FOUNDATION SKILLS TRADES

4411 A	1 MW	2:00p.m.-3:15p.m.	VOC 111	SHEPHERD/WALTHER
--------	------	-------------------	---------	------------------

MFG 105 INDUSTRIAL SAFETY

4412 A	2 TTh	2:00p.m.-3:15p.m.	VOC 112	MACK/SKREEN
--------	-------	-------------------	---------	-------------

Mathematics

Math classes at LCC are offered in three different formats to meet a variety of student needs:

- Standard math classes, where a lecture is presented and homework assigned.
- Online classes.
- Math Achievement Center classes, where students work on their own with the assistance of tutors and an instructor.

It is very important that students take the Placement Assessment before enrolling in math classes. This test helps to ensure that any prerequisites are met and that students enroll in the proper level of mathematics. The Placement Assessment is given in the Entry Center. Call 360.442.2311 for more information.

Online homework and electronic textbook for all MATH 078/079, 088/089, 098/099, 141, 142, 153, and 210 provided by Pearson Education. To resolve technical problems, please contact Technical Support for MyLabsPlus at 1.888.883.1299 or helpdesk@lowercolumbia.mylabsplus.com

Please note: All mathematics prerequisites must be met with a grade of C or better. See your advisor or refer to the LCC catalog for more information.

Pre-College Math

MATH 050 REVIEW MATH-WHOLE NUMBER

▽ 3930 P	1 ARR	ARR	AAR 110	MAC
----------	-------	-----	---------	-----

Hybrid class; partially online.

MATH 078/079 PRE-COLLEGE MATH I — 5 Credits

3940 and 3941 B	DAILY	8:00a.m.-8:50a.m.	AAR 106	BYKER B
3945 and 3946 C	DAILY	9:00a.m.-9:50a.m.	MAN 147	MORRISON D

▽ 3950 and 3980 DE	ARR	ARR	ARR 110	MAC
--------------------	-----	-----	---------	-----

Online class.

3955 and 3956 E	DAILY	10:00a.m.-10:50a.m.	AAR 102	SKEIE M
3960 and 3961 F	MWF	1:30p.m.-2:55p.m.	PSC 104	BYKER B

▽ 3965 and 4000 P	ARR ARR	AAR 110	MAC
-------------------	---------	---------	-----

Hybrid class; partially online.

MATH 087/097 ESSENTIAL PRE-COLLEGE MATH II — 6 Credits

4010 and 4011 R	MWF	8:00a.m.-8:50a.m.	HSB 104	SKEIE T
	TTh	8:00a.m.-10:15a.m.	HSB 104	
4015 and 4016 U	MWF	11:00a.m.-11:50a.m.	HSB 105	BREWSTER H
	TTh	11:00a.m.-1:15p.m.	HSB 105	

MATH 088/089 PRE-COLLEGE MATH II — 5 Credits

▽ 4025 and 4055 DE	ARR	ARR	AAR 110	MAC
--------------------	-----	-----	---------	-----

Online class.

4030 and 4031 L	DAILY	8:00a.m.-8:50a.m.	AAR 102	SKEIE M
4035 and 4036 M	DAILY	9:00a.m.-9:50a.m.	AAR 102	SKEIE M

▽ 4040 and 4070 P	ARR	ARR	AAR 110	MAC
-------------------	-----	-----	---------	-----

Hybrid class; partially online.

4045 and 4046 V	DAILY	11:00a.m.-11:50a.m.	AAR 102	BRIEN R
-----------------	-------	---------------------	---------	---------

MATH 098/099 PRE-COLLEGE MATH III — 5 Credits

4095 and 4096 B	DAILY	9:00a.m.-9:50a.m.	VOC 111	SWEET R
-----------------	-------	-------------------	---------	---------

▽ 4110 and 4111 DE	ARR	ARR	ARR	MAC
4115 and 4116 E	MWF	1:30p.m.-2:55p.m.	VOC 112	MALOZZI J

▽ 4125 and 4165 P	ARR	ARR	AAR 110	MAC
-------------------	-----	-----	---------	-----

Hybrid class; partially online.

College-Level Math

MATH 105 MATH FOR HEALTH SCIENCES

4170 A	5 MWF	12:00p.m.-1:25p.m.	VOC 112	SWEET R
--------	-------	--------------------	---------	---------

MATH 106 INDUSTRIAL MATHEMATICS

4180 A	5 DAILY	1:00p.m.-1:50p.m.	DTV 214	BRIEN R
--------	---------	-------------------	---------	---------

MATH& 107 MATH IN SOCIETY

NS

▽ 4260 A	5 MW	1:30p.m.-2:55p.m.	MAN 119	BENJAMIN B
----------	------	-------------------	---------	------------

Hybrid class; partially online. © Uses Alternative Educational Resources.

▽ 4265 B	5 MWF	9:00a.m.-10:25a.m.	AAR 106	BREWSTER H
----------	-------	--------------------	---------	------------

▽ 4270 DE	5 ARR	ARR	ARR	BENJAMIN B
-----------	-------	-----	-----	------------

Prerequisite: MATH 099 with a grade of C or better.

Online class. © Uses Alternative Educational Resources.

MATH 125 APPLIED COLLEGE ALGEBRA

NS

▽ 4190 DE	5 ARR	ARR	ARR	MALOZZI J
-----------	-------	-----	-----	-----------

Online class.

MATH& 132 MATH FOR ELEMENTARY EDUCATION 2

NS

▽ 4275 A	5 MWF	9:00a.m.-10:50a.m.	VOC 112	SAMUELS S
----------	-------	--------------------	---------	-----------

MATH& 141 PRECALCULUS I

NS

4280 A	5 DAILY	9:00a.m.-9:50a.m.	HSB 107	HEBERT M
4285 B	5 MWF	12:00p.m.-1:25p.m.	HSB 105	BREWSTER H

MATH& 142 PRE-CALCULUS II

NS

4290 A	5 DAILY	10:00a.m.-10:50a.m.	HSB 107	HEBERT M
--------	---------	---------------------	---------	----------

MATH& 148 BUSINESS CALCULUS

NS

4295 A	5 TTh	8:30a.m.-10:45a.m.	HSB 106	SAMUELS S
--------	-------	--------------------	---------	-----------

Try out our FREE online math placement prep course created by our LCC faculty

YouPrep reviews whole numbers, integers, decimals, fractions, linear equations and graphs, systems of equations, factoring, quadratics, radicals, and rationals. YouPrep users who achieve at least 3 hours of online practice will receive a 3rd retest!

Sign up for an account today at
lowercolumbia.edu/YouPrep
 or call 360.442.2353

Course # Course Name

Item#	Sec.#	Cred.#	Days	Time	Place	Instructor
MATH& 151 CALCULUS I						
4300 A	5	DAILY	11:30a.m.-12:20p.m.	HSB 104	BENJAMIN B	NS
MATH& 152 CALCULUS II						
4310 A	5	DAILY	11:30a.m.-12:20p.m.	PSC 104	DRAUS D	NS
MATH 210 ELEMENTS OF STATISTICS						
4195 A	5	DAILY	8:00a.m.-8:50a.m.	VOC 111	SWEE R	NS
⊗ Course is cross-listed as BUS 206 and MATH 210.						
4205 B	5	TTh	1:30p.m.-3:45p.m.	HSB 107	HEBERT M	
⊗ Course is cross-listed as BUS 206 and MATH 210.						
4210 DE	5	ARR	ARR	ARR	SAMUELS S	
Online class. ⊗ Course is cross-listed as BUS 206 and MATH 210.						
4215 DE1	5	ARR	ARR	ARR	HEBERT M	
Online class. ⊗ Course is cross-listed as BUS 206 and MATH 210.						
MATH 215 DISCRETE STRUCTURES						
4220 A	5	MWF	9:00a.m.-10:25a.m.	PSC 104	MALOZZI J	
Ⓢ Uses Alternative Educational Resources.						
MATH 240 DIFFERENTIAL EQUATIONS						
4225 A	5	MWF	11:30a.m.-12:55p.m.	PSC 102	MALOZZI J	
Ⓢ Uses Alternative Educational Resources.						

EVENING CLASSES

MATH 098/099 PRE-COLLEGE MATH III — 5 Credits						
4120 and 4121 N	TTh	5:15p.m.-7:30p.m.	AAR 102	BRIEN R		

Medical Assisting

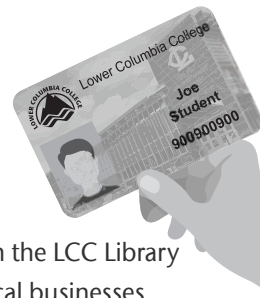
MEDA 101 MEDICAL VOCABULARY I						
4320 A	3	MW	1:30p.m.-2:45p.m.	HSB 244	ENGEL E	
MEDA 102 MEDICAL VOCABULARY II						
4330 A	3	MW	3:15p.m.-4:30p.m.	HSB 244	ENGEL E	
Prerequisites: MEDA 101 or equivalent, or instructor permission.						
MEDA 120 SURVEY/ANATOMY/PHYSIOLOGY						
4340 A	5	MW	8:30a.m.-10:45a.m.	HSB 244	SOLADEY V	
MEDA 122 LAW & ETHICS FOR THE MEDICAL OFFICE						
4350 A	3	MW	11:00a.m.-12:15p.m.	HSB 244	ENGEL E	
MEDA 162 EXAMINING ROOM PROCEDURES II						
4360 A	4	T	8:30a.m.-11:00a.m.	HSB 244	SOLADEY V	
Prerequisite: MEDA 120 or BIOL& 241 and 242, MEDA 161, and current enrollment in the Medical Assisting program. Students must also enroll in one of the lab sections, MEDA 162 LA or LB.						
Lab Fee: \$35.60						
MEDA 162 EXAMINING ROOM PROCEDURES II—LAB						
4370 LA	0	Th	8:30a.m.-10:10a.m.	HSB 244	SOLADEY V	
4375 LB	0	Th	10:30a.m.-12:10p.m.	HSB 244	SOLADEY V	

Music

MUSC 100 FUNDAMENTALS OF MUSIC						
4415 A	5	Th	11:00a.m.-1:15p.m.	RCA 102	DAVIS R	H
Hybrid class; partially online. Ⓢ Uses Alternative Educational Resources.						
MUSC 102 THEORY & MUSICIANSHIP II						
4420 A	5	MWF	10:00a.m.-11:25a.m.	RCA 218	DAVIS R	H
Concurrent enrollment in MUSC 112 required. Instructor permission required to enroll.						
MUSC& 105 MUSIC APPRECIATION						
4800 DE	5	ARR	ARR	ARR	CHALLED G	H
Online class.						
MUSC 106 KEYBOARD SKILLS I						
4425 A	1	Th	1:30p.m.-3:00p.m.	RCA 221	DAVIS R	H
Instructor permission required to enroll.						
Hybrid class; partially online. ⊗ Course is clustered with other class sections that meet at the same time, in the same classroom.						
MUSC 107 KEYBOARD SKILLS II						
4430 A	1	Th	1:30p.m.-3:00p.m.	RCA 221	DAVIS R	H
Instructor permission required to enroll.						
Hybrid class; partially online. ⊗ Course is clustered with other class sections that meet at the same time, in the same classroom.						
MUSC 108 KEYBOARD SKILLS III						
4435 A	1	Th	1:30p.m.-3:00p.m.	RCA 221	DAVIS R	H
Instructor permission required to enroll.						
Hybrid class; partially online. ⊗ Course is clustered with other class sections that meet at the same time, in the same classroom.						
MUSC 112 EAR TRAINING II						
4440 A	1	MW	11:25a.m.-11:50a.m.	RCA 218	DAVIS R	P
Instructor permission required to enroll.						
MUSC 115 GROUP PIANO INSTRUCTION						
4445 A	2	Th	1:30p.m.-3:00p.m.	RCA 221	DAVIS R	
Hybrid class; partially online. Ⓢ Uses Alternative Educational Resources.						
MUSC 122 CONCERT CHOIR II						
4455 A	2	MWF	12:00p.m.-12:50p.m.	RCA 102	CHALLED G	H,P
Instructor permission required to enroll.						
Lab Fee: \$8.40 ⊗ Course is clustered with other class sections that meet at the same time, in the same classroom.						

LCC Students, are you aware of the benefits of carrying a current LCC Student ID card?

- Access to the LCC Food Pantry, Food For Thought
- Ride the bus for free
- Participation in campus events and activities
- Check out materials from the LCC Library
- Discounts from select local businesses



Pick up or renew your LCC Student ID at the Bookstore during normal business hours!

Course # Course Name

▼ Item#	Sec.#	Cred.#	Days	Time	Place	Instructor
---------	-------	--------	------	------	-------	------------

MUSC 131 BEGINNING GUITAR**P**

▼ 4470 A 2 TTh 3:30p.m.-4:20p.m. RCA 102 HARBAUGH K
Guitars are provided for student use. Students will be allowed to take guitars home for practice. ☒ Course is clustered with other class sections that meet at the same time, in the same classroom.
Hybrid class; partially online.

MUSC 132 INTERMEDIATE GUITAR**P**

▼ 4480 A 2 TTh 3:30p.m.-4:20p.m. RCA 102 HARBAUGH K
Guitars are provided for student use. Students will be allowed to take guitars home for practice.
Hybrid class; partially online. ☒ Course is clustered with other class sections that meet at the same time, in the same classroom.

MUSC 133 ADVANCED GUITAR**P**

▼ 4485 A 2 TTh 3:30p.m.-4:20p.m. RCA 102 HARBAUGH K
Guitars are provided for student use. Students will be allowed to take guitars home for practice.
Hybrid class; partially online. ☒ Course is clustered with other class sections that meet at the same time, in the same classroom.

MUSC 145 BEGINNING VOICE**H**

▼ 4495 A 2 MW 10:00a.m.-10:50a.m. RCA 102 CHALLED G
Lab Fee: \$8.40 ☒ Uses Alternative Educational Resources.

MUSC 152 BELLA VOCE CHOIR II**H,P**

▼ 4510 A 2 MWF 1:00p.m.-1:50p.m. RCA 102 CHALLED G
Instructor permission required to enroll.
Lab Fee: \$8.40 ☒ Course is clustered with other class sections that meet at the same time, in the same classroom.

MUSC 177 INDIVIDUAL INSTRUCTION**H,P**
STAFF

.5-1 credit	AAR	AAR	RCA 223
4520 A Flute	4560 I Tuba	4615 O Cello	
4525 B Oboe	4565 J Percussion	4620 P Bass	
4530 C Clarinet	4570 J1 Percussion	▼ 4625 R Vocal ☒	
4535 D Saxophone	4575 J2 Percussion	▼ 4630 R1 Vocal ☒	
4540 E Bassoon	4580 K Guitar	▼ 4635 R2 Vocal ☒	
4545 F Trumpet	4585 L Piano	▼ 4640 R3 Vocal ☒	
4550 G French Horn	4590 M Violin	▼ 4645 R4 Vocal ☒	
4555 H Trombone	4610 N Viola		

Private music lessons are available in piano, brass, guitar, percussion, string, and voice. A fee of \$500 per credit is collected for this course in addition to tuition.
☒ Course is clustered with other class sections that meet at the same time, in the same classroom.

MUSC 209 THE BLUES CULTURE:DIV**D,H**

▼ 4665 DE 5 ARR ARR ARR HARBAUGH K
Online class.

MUSC 222 CONCERT CHOIR V**H,P**

▼ 4675 A 2 MWF 12:00p.m.-12:50p.m. RCA 102 CHALLED G
Instructor permission required to enroll.
Lab Fee: \$8.40 ☒ Course is clustered with other class sections that meet at the same time, in the same classroom.

MUSC 252 BELLA VOCE CHOIR V**H,P**

▼ 4695 A 2 MWF 1:00p.m.-1:50p.m. RCA 102 CHALLED G
Instructor permission required to enroll.
Lab Fee: \$8.40 ☒ Course is clustered with other class sections that meet at the same time, in the same classroom.

MUSC 277 INDIVIDUAL INSTRUCTION**H,P**
STAFF

.5-1 credit	AAR	AAR	RCA 223
4705 A Flute	4735 G French Horn	4765 M Violin	
4710 B Oboe	4740 H Trombone	4770 N Viola	
4715 C Clarinet	4745 I Tuba	4775 O Cello	
4720 D Saxophone	4750 J Percussion	4780 P Bass	
4725 E Bassoon	4755 K Guitar	▼ 4785 R Vocal	
4730 F Trumpet	4760 L Piano		

Private music lessons are available in piano, brass, guitar, percussion, string, and voice. A fee of \$500 per credit is collected for this course in addition to tuition.
Prerequisite: MUSC 176, 177, 178.

EVENING CLASSES**MUSC 130 JAZZ ENSEMBLE****H,P**

4465 N 2 T 7:00p.m.-9:00p.m. RCA 102 MEAGHER R
Lab Fee: \$8.40

MUSC 150 SYMPHONIC BAND**H,P**

4500 N 2 Th 7:00p.m.-9:00p.m. RCA 102 DAVIS R
Instructor permission required to enroll.
Lab Fee: \$8.40

Nursing

The Lower Columbia College Nursing Program is committed to providing excellence in nursing education that encompasses critical thinking, competencies in the role of provider of care, manager of care and member in the discipline of nursing, with an emphasis on life-long learning. Nursing is a demanding and rewarding profession that requires strong communication skills, excellent problem-solving abilities, focused concentration when performing a task, attention to detail, the ability to work well with others, and extensive knowledge of the sciences.

Students interested in a nursing career can find information about LCC's nursing programs at lowercolumbia.edu/programs. Students who have been admitted to the nursing program should contact their advisor for course and registration information.

Nursing Assistant (NURS 090) is an 8-credit course that provides students the content and experience to give basic nursing care to patients under the supervision of a licensed nurse. Please contact Bev Ylen, Nursing and Allied Health Program Assistant, 360.442.2860 for course information and to register.

EVENING CLASSES**NURS 90 NURSING ASSISTANT**

▼ 4825 NA 8 DAILY ARR HSB 249 MACLAREN A
Instructor permission required to enroll.
Lab Fee: \$52.60

▼ 4815 LA 0 ARR ARR HSB 246 MACLAREN A
Instructor permission required to enroll.
Lab Fee: \$52.60

4820 LB 0 ARR ARR ARR STAFF
Instructor permission required to enroll.
Lab Fee: \$52.60

Course # Course Name

Item#	Sec.#	Cred.#	Days	Time	Place	Instructor
-------	-------	--------	------	------	-------	------------

Nutrition

NUTR& 101 NUTRITION

NS

▽ 4985 A	5	MW	9:30a.m.-10:45a.m.	GYM 212	KOOIMAN J
----------	---	----	--------------------	---------	-----------

 Hybrid class; partially online.

▽ 4990 B	5	MW	11:00a.m.-12:15p.m.	GYM 212	KOOIMAN J
----------	---	----	---------------------	---------	-----------

 Hybrid class; partially online.

▽ 5000 DE	5	ARR	ARR	ARR	KOOIMAN J
-----------	---	-----	-----	-----	-----------

 Online class.

▽ 5005 DE1	5	ARR	ARR	ARR	ROSS E
------------	---	-----	-----	-----	--------

 Online class.

▽ 5010 DE2	5	ARR	ARR	ARR	ROSS E
------------	---	-----	-----	-----	--------

 Online class.

▽ 5015 DE3	5	ARR	ARR	ARR	ROSS E
------------	---	-----	-----	-----	--------

 Online class.

▽ 5017 DE4	5	ARR	ARR	ARR	KOOIMAN J
------------	---	-----	-----	-----	-----------

 Online class.

EVENING CLASSES

▽ 4995 N	5	TTh	6:00p.m.-7:15p.m.	GYM 212	MICHAEL S
----------	---	-----	-------------------	---------	-----------

 Hybrid class; partially online. © Uses Alternative Educational Resources.

Oceanography

OCEA& 101 INTRODUCTION TO OCEANOGRAPHY

NSL

▽ 5020 DE	5	ARR	ARR	ARR	KHANDRO L
-----------	---	-----	-----	-----	-----------

 Lab included.
Online class.

Philosophy

PHIL& 101 INTRODUCTION TO PHILOSOPHY

▽ 5150 DE	5	ARR	ARR	ARR	MARBUT T
-----------	---	-----	-----	-----	----------

 Online class.

▽ 5155 DE1	5	ARR	ARR	ARR	MARBUT T
------------	---	-----	-----	-----	----------

 Online class.

PHIL 260 PHILOSOPHY OF RELIGION

5145 A	5	TTh	1:30p.m.-3:45p.m.	HSB 123	LEACH M
--------	---	-----	-------------------	---------	---------

Physical Education

A \$8.10 fee is charged for each Physical Education class.

PHED 104 PILATES AND STRETCH

A

5045 B	1	TTh	11:00a.m.-11:50a.m.	GYM 210	SKERBECK C
--------	---	-----	---------------------	---------	------------

⊗ Course is clustered with other class sections that meet at the same time, in the same classroom.

PHED 106 YOGA FOR BEGINNERS

A

5050 A	1	TTh	10:00a.m.-10:50a.m.	GYM 210	SKERBECK C
--------	---	-----	---------------------	---------	------------

PHED 128 WEIGHT TRAINING

A

▽ 5060 A	1-2	MW	9:00a.m.-9:50a.m.	GYM 113	MC MULLAN E
----------	-----	----	-------------------	---------	-------------

 Hybrid class; partially online. ⊗ Course is clustered with other class sections that meet at the same time, in the same classroom.

PHED 145 SOFTBALL COACHING THEORY

5065 A	3	ARR	ARR	GYM 211	FULLER T
--------	---	-----	-----	---------	----------

PHED 152 PERSONALIZED FITNESS

A

▽ 5070 A	1-2	MW	10:00a.m.-10:50a.m.	GYM 113	MC MULLAN E
----------	-----	----	---------------------	---------	-------------

 Hybrid class; partially online. ⊗ Course is clustered with other class sections that meet at the same time, in the same classroom.

▽ 5075 DE	1-2	ARR	ARR	ARR	ROSS E
-----------	-----	-----	-----	-----	--------

 Students must log into canvas for class instructions and syllabus.
Online class. ⊗ Course is clustered with other class sections that meet at the same time, in the same classroom.

PHED 155 ROCK CLIMBING-BEGINNING

A

5080 A	1	MW	4:00p.m.-4:50p.m.	GYM 113	HAYES E
--------	---	----	-------------------	---------	---------

 Lab Fee: \$32.40

PHED 164 APPLIED BASKETBALL MEN

5085 A	2	ARR	ARR	GYM 116	POLIS M
--------	---	-----	-----	---------	---------

⊗ Course is clustered with other class sections that meet at the same time, in the same classroom.

PHED 165 APPLIED BASKETBALL WOMEN

5090 A	2	ARR	ARR	GYM 116	MYERS L
--------	---	-----	-----	---------	---------

⊗ Course is clustered with other class sections that meet at the same time, in the same classroom.

PHED 190 BASEBALL COACHING THEORY

5095 A	3	MWTh	2:00p.m.-2:50p.m.	GYM 211	LANE E
--------	---	------	-------------------	---------	--------

PHED 204 PILATES AND STRETCH

A

5100 B	1	TTh	11:00a.m.-11:50a.m.	GYM 210	SKERBECK C
--------	---	-----	---------------------	---------	------------

⊗ Course is clustered with other class sections that meet at the same time, in the same classroom.

Receive Emergency Text Alerts from LCC
lowercolumbia.edu/alerts



Course # Course Name

Item#	Sec.#	Cred.#	Days	Time	Place	Instructor
-------	-------	--------	------	------	-------	------------

PHED 216 WINTER OUTDOOR EXPERIENCE

5133 A	1-2 W	1:00p.m.-2:50p.m.	GYM 212	ROSS E
--------	-------	-------------------	---------	--------

Class meets on campus Wednesday, Jan. 9, Jan. 23, Feb. 6, Feb. 20, and Mar. 6.
Field trips dates are on Jan. 26, Feb. 8, and Feb. 24 from 8:00 a.m.-5:00 p.m.
Hybrid class; partially online.

PHED 228 WEIGHT TRAINING**A**

5110 A	1-2 MW	9:00a.m.-9:50a.m.	GYM 113	MC MULLAN E
--------	--------	-------------------	---------	-------------

Hybrid class; partially online. ☒ Course is clustered with other class sections that meet at the same time, in the same classroom.

PHED 252 PERSONALIZED FITNESS**A**

5115 A	1-2 MW	10:00a.m.-10:50a.m.	GYM 113	MC MULLAN E
--------	--------	---------------------	---------	-------------

☒ Course is clustered with other class sections that meet at the same time, in the same classroom.

5120 DE	1-2 ARR	ARR	ARR	ROSS E
---------	---------	-----	-----	--------

Students must log into canvas for class instructions and syllabus.
Online class. ☒ Course is clustered with other class sections that meet at the same time, in the same classroom.

PHED 264 APPLIED BASKETBALL MEN

5125 A	2 ARR	ARR	GYM 116	POLIS M
--------	-------	-----	---------	---------

☒ Course is clustered with other class sections that meet at the same time, in the same classroom.

PHED 265 APPLIED BASKETBALL WOMEN

5130 A	2 ARR	ARR	GYM 116	MYERS L
--------	-------	-----	---------	---------

☒ Course is clustered with other class sections that meet at the same time, in the same classroom.

New Class Winter Quarter

Winter Outdoor Experience

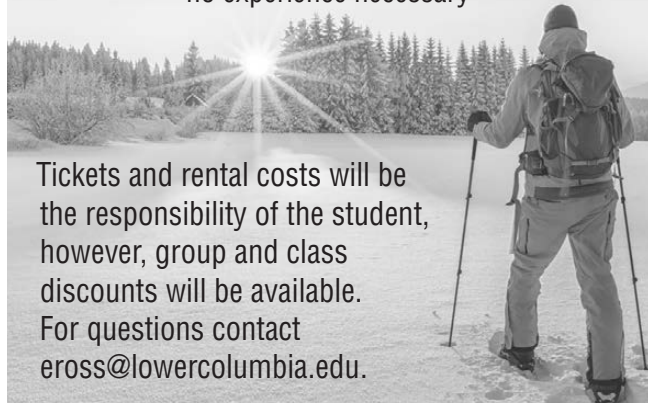
(PHED 216, Item #5133 • 1-2 credits)

Class Days: Wednesdays, 1-2:50 p.m.
(1/9, 1/23, 2/6, 2/20, 3/6)

Field Trip Days: 1/26, 2/8, 2/24

One snowshoeing trip and a choice of cross-country skiing, downhill skiing and snowboarding the other two field trip days.

-no experience necessary-



Tickets and rental costs will be the responsibility of the student, however, group and class discounts will be available.
For questions contact
eross@lowercolumbia.edu.

Physics**PHYS& 115 GENERAL PHYSICS II****NS**

5165 A	5 MWThF	8:00a.m.-8:50a.m.	HSB 137	LIVINS P
--------	---------	-------------------	---------	----------

Course is to be taken with a lab section, PHYS& 115 LA, LB, or LC.
Lab Fee: \$15.00

PHYS& 115 GENERAL PHYSICS I—LAB

5170 LA	0 T	9:00a.m.-11:00a.m.	HSB 137	LIVINS P
5175 LB	0 T	11:00a.m.-1:00p.m.	HSB 137	LIVINS P
5180 LC	0 ARR	ARR	HSB 137	LIVINS P

Contact instructor at plivins@lowercolumbia.edu for more information regarding arranged lab.

PHYS& 222 ENGR PHYSICS II**NSL**

5185 A	5 MWF	10:00a.m.-11:15a.m.	HSB 137	LIVINS P
--------	-------	---------------------	---------	----------

Course is to be taken with a lab section, PHYS& 222 LA, LB, or LC.
Lab Fee: \$15.00

PHYS& 222 ENGINEERING PHYSICS I—LAB

5190 LA	0 T	1:00p.m.-3:00p.m.	HSB 137	LIVINS P
5195 LB	0 Th	1:00p.m.-3:00p.m.	HSB 137	LIVINS P
5200 LC	0 ARR	ARR	HSB 137	LIVINS P

Contact instructor at plivins@lowercolumbia.edu for more information regarding arranged lab.

Political Science**POLS& 101 INTRODUCTION TO POLITICAL SCIENCE****SS**

5225 A	5 MW	8:30a.m.-10:45a.m.	MAN 234	MOSSER J
--------	------	--------------------	---------	----------

POLS& 202 AMERICAN GOVERNMENT**SS**

5230 A	5 TTh	8:30a.m.-10:45a.m.	AAR 123	MOSSER J
5240 B	5 MW	1:00p.m.-3:15p.m.	HSB 123	STAFF
5245 C	5 MW	8:30a.m.-10:45a.m.	HSB 106	STAFF

POLS& 203 INTERNATIONAL RELATIONS**SS**

5255 A	5 MW	1:00p.m.-3:15p.m.	MAN 234	MOSSER J
--------	------	-------------------	---------	----------

Process Manufacturing**PMFG 201 ELECTRICAL CONTROL EQUIPMENT**

5215 A	3 TTh	4:00p.m.-5:15p.m.	VOC 112	JOINER T
--------	-------	-------------------	---------	----------

EVENING CLASSES**PMFG 110 INDUSTRIAL MAINTENANCE FUNDAMENTALS**

5205 N	5 TTh	5:30p.m.-7:30p.m.	VOC 112	JOINER T
--------	-------	-------------------	---------	----------

PMFG 152 PROCESS CONTROL SYSTEMS

5210 N	5 MW	5:15p.m.-7:15p.m.	VOC 112	JOINER T
--------	------	-------------------	---------	----------

Course # Course Name

Item#	Sec.#	Cred.#	Days	Time	Place	Instructor
-------	-------	--------	------	------	-------	------------

Psychology

PSYC& 100 GENERAL PSYCHOLOGY**SS**

5305 A	5	MW	8:30a.m.-10:45a.m.	MAN 235	WEAVER N
Ⓢ Uses Alternative Educational Resources.					
5315 B	5	MW	1:00p.m.-3:15p.m.	MAN 233	STRAYER M
Ⓢ Uses Alternative Educational Resources.					
5320 C	5	TTh	8:30a.m.-10:45a.m.	MAN 235	WEAVER N
Ⓢ Uses Alternative Educational Resources.					
5325 DE	5	ARR	ARR	ARR	TUCKER J
Online class.					
5330 DE1	5	ARR	ARR	ARR	TUCKER J
Online class.					

PSYC 150 PSYCHOLOGICAL ISSUES IN HEALTHCARE I**SS**

5265 A	2	TW	11:30a.m.-12:20p.m.	HSB 222A	DAILEY J
Instructor permission required to enroll. Restricted to Nursing students.					

PSYC& 200 LIFESPAN PSYCHOLOGY**SS**

5340 A	5	MW	8:30a.m.-10:45a.m.	MAN 233	STRAYER M
5345 C	5	TTh	11:00a.m.-1:15p.m.	MAN 147	RICHIE G
5355 DE	5	ARR	ARR	ARR	RICHIE G
Online class.					

PSYC& 220 ABNORMAL PSYCHOLOGY**SS**

5365 A	5	TTh	11:00a.m.-1:15p.m.	MAN 233	STRAYER M
--------	---	-----	--------------------	---------	-----------

PSYC 250 PSYCHOLOGICAL ISSUES IN HEALTHCARE II**SS**

5270 A	3	MTh	12:30p.m.-2:00p.m.	HSB 248	NORTON T
Instructor permission required to enroll. Restricted to Nursing students.					
Start Date: 01/14/19 End Date: 02/22/19					

PSYC 255 PSYCHOSOCIAL ISSUES IN HEALTH CARE**SS**

5275 DE	5	ARR	ARR	ARR	NORTON T
Instructor permission required to enroll. Restricted to Nursing students.					
Online class.					
5280 DE1	5	ARR	ARR	ARR	NORTON T
Instructor permission required to enroll. Restricted to Nursing students.					
Online class.					
5285 DE2	2	ARR	ARR	ARR	NORTON T
Instructor permission required to enroll. Restricted to Nursing students.					
Online class.					

EVENING CLASSES**PSYC& 100 GENERAL PSYCHOLOGY****SS**

5335 N	5	T	6:00p.m.-8:00p.m.	HSB 101	TUCKER J
Hybrid class; partially online.					

Sociology

SOC& 101 INTRODUCTION TO SOCIOLOGY:DIV**D,SS**

5410 A	5	MW	11:00a.m.-1:15p.m.	MAN 235	WEAVER N
Ⓢ Uses Alternative Educational Resources.					
5415 B	5	TTh	1:30p.m.-3:45p.m.	PSC 104	BATEY T
Ⓢ Uses Alternative Educational Resources.					
5425 DE	5	ARR	ARR	ARR	TATE J
Online class.					
5430 DE1	5	ARR	ARR	ARR	TATE J
Online class.					
5435 E	5	MW	1:30p.m.-3:45p.m.	MAN 235	BATEY T
Ⓢ Uses Alternative Educational Resources.					

Spanish

All DE sections are online, using Maestro and email communication with the instructor. After registering, students must contact Alex Emerson at aemerson@lowercolumbia.edu.

All sections of SPAN& 121, 122 and 123 satisfy the Diversity requirement.

Regular study sessions available for SPAN& 122 and 123 DE sections.

SPAN& 121 SPANISH I:DIV**D,H**

5450 A	5	DAILY	8:00a.m.-8:50a.m.	AAR 104	EMERSON A
5455 B	5	DAILY	9:00a.m.-9:50a.m.	AAR 104	EMERSON A
5465 DE	5	ARR	ARR	ARR	EMERSON A

SPAN& 122 SPANISH II:DIV**D,H**

5480 DE	5	ARR	ARR	ARR	EMERSON A
---------	---	-----	-----	-----	-----------

SPAN& 123 SPANISH III:DIV**D,H**

5495 DE	5	ARR	ARR	ARR	EMERSON A
---------	---	-----	-----	-----	-----------

SPAN& 221 SPANISH IV**D,H**

5500 DE	5	ARR	ARR	ARR	EMERSON A
---------	---	-----	-----	-----	-----------

SPAN& 222 SPANISH V**H**

5505 DE	5	ARR	ARR	ARR	EMERSON A
---------	---	-----	-----	-----	-----------

SPAN& 223 SPANISH VI**H**

5510 DE	5	ARR	ARR	ARR	EMERSON A
---------	---	-----	-----	-----	-----------

Host an International Student!

If you have a spare room and an open heart, you can provide a home away from home for an international student in our community. As a host, you'll provide room and board and friendship for a student studying at LCC. You'll learn about different cultures while sharing a slice of your American life. Host families come in all shapes and sizes and receive a monthly stipend. For more information, visit lowercolumbia.edu/international or email international@lowercolumbia.edu



Course # Course Name

▽ Item# Sec.# Cred.# Days Time Place Instructor

Welding Technology

A \$12.50 per-credit fee to a maximum of \$125.00 is charged for each welding class.

WELD 060 WABO EXAM PREPARATION

5555 MM 1-6 ARR ARR VOC 161 BYRUM R

WELD 105 RELATED WELDING I

⊗ Course is clustered with other class sections that meet at the same time, in the same classroom.

▽ 5650 A 2-6 DAILY 8:00a.m.-11:00a.m. VOC 161 BYRUM/PITTSLEY

▽ 5660 B 2-6 MWF 1:00p.m.-4:00p.m. VOC 161 BYRUM/PITTSLEY

WELD 154 INTRODUCTION TO OXY ACETYLENE

⊗ Course is clustered with other class sections that meet at the same time, in the same classroom.

▽ 5680 A 6 DAILY 8:00a.m.-11:00a.m. VOC 161 BYRUM/PITTSLEY

▽ 5690 B 2-6 MWF 1:00p.m.-4:00p.m. VOC 161 BYRUM/PITTSLEY

WELD 155 INTRODUCTION TO ARC WELDING

⊗ Course is clustered with other class sections that meet at the same time, in the same classroom.

▽ 5715 A 2-10 DAILY 8:00a.m.-11:00a.m. VOC 161 BYRUM/PITTSLEY

▽ 5725 B 2-6 MWF 1:00p.m.-4:00p.m. VOC 161 BYRUM/PITTSLEY

WELD 221 WIRE MACHINE

⊗ Course is clustered with other class sections that meet at the same time, in the same classroom.

▽ 5750 A 2-10 DAILY 8:00a.m.-11:00a.m. VOC 161 BYRUM/PITTSLEY

▽ 5760 B 2-6 MWF 1:00p.m.-4:00p.m. VOC 161 BYRUM/PITTSLEY

WELD 222 ADVANCED WIRE MACHINE

⊗ Course is clustered with other class sections that meet at the same time, in the same classroom.

▽ 5785 A 6 MWF 8:00a.m.-11:00a.m. VOC 161 BYRUM/PITTSLEY

▽ 5795 B 6 MWF 1:00p.m.-4:00p.m. VOC 161 BYRUM/PITTSLEY

WELD 254 ARC WELDING

⊗ Course is clustered with other class sections that meet at the same time, in the same classroom.

▽ 5815 A 2-10 DAILY 8:00a.m.-11:00a.m. VOC 161 BYRUM/PITTSLEY

▽ 5825 B 2-6 MWF 1:00p.m.-4:00p.m. VOC 161 BYRUM/PITTSLEY

WELD 255 ADVANCED WELDING PROCESSES

⊗ Course is clustered with other class sections that meet at the same time, in the same classroom.

▽ 5850 A 2-10 DAILY 8:00a.m.-11:00a.m. VOC 161 BYRUM/PITTSLEY

▽ 5860 B 2-6 MWF 1:00p.m.-4:00p.m. VOC 161 BYRUM/PITTSLEY

WELD 256 ADVANCED WELDING APPLICATION

⊗ Course is clustered with other class sections that meet at the same time, in the same classroom.

▽ 5880 A 2-10 DAILY 8:00a.m.-11:00a.m. VOC 161 BYRUM/PITTSLEY

▽ 5890 B 2-6 MWF 1:00p.m.-4:00p.m. VOC 161 BYRUM/PITTSLEY

WELD 299 INDEPENDENT STUDY

5920 A 1-10 ARR ARR VOC 161 WELD FACULTY
Instructor permission required to enroll.

EVENING CLASSES

WELD 105 RELATED WELDING I

⊗ Course is clustered with other class sections that meet at the same time, in the same classroom.

5665 NA 2-6 TWTh 6:00p.m.-9:00p.m. VOC 161 MILLER R

WELD 154 INTRODUCTION TO OXY ACETYLENE

⊗ Course is clustered with other class sections that meet at the same time, in the same classroom.

5700 NA 2-6 TWTh 6:00p.m.-9:00p.m. VOC 161 MILLER R

WELD 155 INTRODUCTION TO ARC WELDING

⊗ Course is clustered with other class sections that meet at the same time, in the same classroom.

5735 NA 2-6 TWTh 6:00p.m.-9:00p.m. VOC 161 MILLER R

WELD 221 WIRE MACHINE

⊗ Course is clustered with other class sections that meet at the same time, in the same classroom.

5770 NA 2-6 TWTh 6:00p.m.-9:00p.m. VOC 161 MILLER R

WELD 222 ADVANCED WIRE MACHINE

⊗ Course is clustered with other class sections that meet at the same time, in the same classroom.

5800 NA 2-6 TWTh 6:00p.m.-9:00p.m. VOC 161 MILLER R

WELD 254 ARC WELDING

⊗ Course is clustered with other class sections that meet at the same time, in the same classroom.

5835 NA 2-6 TWTh 6:00p.m.-9:00p.m. VOC 161 MILLER R

WELD 255 ADVANCED WELDING PROCESSES

⊗ Course is clustered with other class sections that meet at the same time, in the same classroom.

5865 NA 2-6 TWTh 6:00p.m.-9:00p.m. VOC 161 MILLER R

WELD 256 ADVANCED WELDING APPLICATION

⊗ Course is clustered with other class sections that meet at the same time, in the same classroom.

5895 NA 2-6 TWTh 6:00p.m.-9:00p.m. VOC 161 MILLER R

Ride Free with
LCC Student ID!



for more info go to
lowercolumbia.edu/bus

Transitional Studies offers adult education courses designed to prepare you for college-level studies or help you earn your high school diploma. Classes are \$25 per quarter and students may enroll at any time. For more information call 360.442.2580.

ABE English

ABE 061 ENGLISH A-B

5 Daily 9:00a.m.-9:50a.m. VOC 156A Yarbrough-Hall S

ABE 081 ENGLISH A-D (ENGLISH, OCCUPATIONAL ED, HEALTH/PE)

5 MW 7:00p.m.-9:05p.m. VOC 156 Sharp J

ABE 091 ENGLISH C-E (ENGLISH, US HISTORY, GOVERNMENT, FINE ARTS)

5 Daily 9:00a.m.-9:50a.m. VOC 154 Graham C

ABE 091 INTEGRATED C-E (ENGLISH, CWH) HYBRID

5 TTh 9:00a.m.-9:50a.m. VOC 116 Bent S

ABE 091 INTEGRATED C-E (ENGLISH, GOVERNMENT) HYBRID

5 TTh 10:00a.m.-10:50a.m. VOC 116 Bent S

ABE 091 ENGLISH C-E (ENGLISH, SCIENCE, LAB SCIENCE, CWH)

5 Daily 10:00a.m.-10:50a.m. VOC 154 Watts M

ABE 091 ENGLISH C-E (ENGLISH, OCCUPATIONAL ED., HEALTH/PE, FINE ARTS)

5 Daily 11:00a.m.-11:50a.m. VOC 156 Bent S

ABE 091 INTEGRATED C-E (ENGLISH, WA STATE HISTORY) HYBRID

5 TTh 11:00a.m.-11:50a.m. AAR 101 Graham C

ABE 091 PRE-COLLEGE ENGLISH C-E (ENGLISH)

5 MWF 11:00a.m.-12:25p.m. AAR 101 Yund J

ABE 091 ENGLISH C-E (OCCUPATIONAL, HEALTH/PE, FINE ARTS) HYBRID

5 TTh 1:00p.m.-1:50p.m. AAR 101 Al Bassam S

ABE 091 ENGLISH C-E (ENGLISH, SCIENCE, LAB SCIENCE) HYBRID

5 T 1:00p.m.-1:50p.m. VOC 157 Watts M

ABE 091 ENGLISH A-E (ENGLISH, US HISTORY, GOVERNMENT)

5 Daily 1:00p.m.-1:50p.m. VOC 156 Sharp J

ABE 091 ENGLISH B-C TECHNOLOGY FOR COLLEGE AND CAREER (OCCUPATIONAL TECHNOLOGY) HYBRID

5 TWTh 1:00p.m.-2:20p.m. VOC 153 Bent S

ABE 091 INTEGRATED C-E (ENGLISH, US HISTORY) HYBRID

5 TTh 2:00p.m.-2:50p.m. AAR101 Graham C

ABE 091 ENGLISH C-E (ENGLISH, WA STATE HISTORY, CWH)

5 Daily 2:00p.m.-2:50p.m. VOC 156 McShane H

ABE 091 ENGLISH C-E (ENGLISH, US HISTORY, GOVERNMENT)

9.6 M-Th 7:00p.m.-9:00p.m. VOC 154 Harlan K

ABE 091 ENGLISH C-E (WRITERS WORKSHOP)

Late Start Class: 01/29/19 End Date: 03/08/19

6 Daily 11:00a.m.-12:50p.m. VOC 157 Lacoursiere A

ABE Integrated

ABE 093 INTEGRATED C-E FAST TRACK (ENGLISH, MATH, GED) HYBRID

5 TTh 12:00p.m.-12:50p.m. AAR 101 Al Bassam S

ABE 093 INTEGRATED C-E (ENGLISH, MATH, GED) HYBRID

5 M-Th 5:00p.m.-5:50p.m. AAR 101 Schultz L

ABE 093 INTEGRATED C-E FAST TRACK (GED, ENGLISH, MATH, FINE ARTS, US HISTORY, GOVERNMENT, ELECTIVES) HYBRID

15 M-Th 6:00p.m.-8:50p.m. AAR 101 Schultz L

ABE 093 INTEGRATED C-E (PORTFOLIO) HYBRID

7.2 MW 6:00p.m.-9:00p.m. Woodland Primary Bent S

ABE Math

ABE 082 MATH D (MATH)

5 Daily 9:00a.m.-9:50a.m. VOC 156 Dines M

ABE 062 MATH A-B

5 Daily 10:00a.m.-10:50a.m. VOC 156A Graham C

ABE 072 MATH C (ELECTIVES)

5 Daily 11:00a.m.-11:50a.m. VOC 154 Watts M

ABE 082 MATH D (MATH NON-STEM, ELECTIVES)

6 MWF 11:00a.m.-12:40p.m. VOC 156A Graham C

ABE 082 MATH D (MATH)

5 Daily 1:00p.m.-1:50p.m. VOC 154 Sung J

ABE 072 MATH A-C

5 Daily 2:00p.m.-2:50p.m. VOC 154 Sung J

ABE 072 MATH B-C HYBRID

5 T 2:00p.m.-2:50p.m. VOC 157 Watts M

ABE 072 MATH A-C

4.8 M-Th 6:00p.m.-7:00p.m. VOC 156 Sung J

ABE 082 MATH D (MATH)

4.8 M-Th 6:00p.m.-7:00p.m. VOC 156A Nelson G

ABE 092 MATH D-E (MATH) HYBRID

5 MW 7:00p.m.-9:00p.m. VOC 153 Schultz J

English as a Second Language

ESL 051 ENGLISH A

11 Daily 9:00a.m.-10:50a.m. VOC 157A Maslennikova I

ESL 071 ENGLISH B-C (SCIENCE, LAB SCIENCE)

11 Daily 9:00a.m.-10:50a.m. VOC 157 Yund J

ABE 092 MATH FOR ENGLISH LANGUAGE LEARNERS A-E (MATH)

5 Daily 11:00a.m.-11:50a.m. VOC 157A Maslennikova I

ESL 051 ENGLISH A

7.2 TTh 6:00p.m.-9:00p.m. VOC 157A Brumbaugh M

ESL 071 ENGLISH B-C (SCIENCE, LAB SCIENCE)

7.2 MW 6:00p.m.-9:00p.m. VOC 157 Hearn F

ESL 051 ENGLISH A-C

6.9 TWTh 9:00a.m.-10:55a.m. AAR 101 Moreno C

ESL 071 ENGLISH A-C

7.2 MW 6:00p.m.-9:00p.m. Woodland Primary Moreno C

I-BEST PUTS STUDENTS ON FAST TRACK TO CAREER & STUDENT SUCCESS

Integrated Basic Education & Skills Training (I-BEST) is a proven program for student success. I-BEST students have double the certificate/degree completion rate, a result of hands-on training combined with twice the support and instruction to help students excel. I-BEST faculty and professional/technical faculty work together in the classroom in a team teaching partnership and I-BEST instructors are available for up to five hours or more each week to assist students in an academic support classroom where instruction is targeted to classroom studies. College credits earned can be applied toward two year Associate degrees in nine high-demand career fields.

Business Management

Prepares graduates for entry-level employment in a variety of business support positions. Students in Retail Management develop an understanding of the scope and requirements of a management position in a retail business. Credits for both can be applied toward the AAS in Business Management.

ACCT 101	Introduction to Accounting Concepts
BUS 100	Foundations of Business
BUS 101	Introduction to Business
BUS 104	Business Math Applications
BUS 119	Business Communications
BUS 144	Management of Human Relations:DIV

Business Technology

Prepares graduates to work in an office setting. Credits can be applied toward two year AAS degrees.

BTEC 111	Word Processing I
BTEC 131	Introduction to Spreadsheets
BTEC 148	Introduction to Outlook
BTEC 165	Cultural Awareness for Care Professionals:DIV
BTEC 172	Medical Office Procedures
BUS 100	Foundations of Business
IT 111	Introduction to Windows

Diesel/Heavy Equipment Technology

Prepares graduates for careers in any industry that utilizes trucks, excavators, bulldozers, other heavy equipment, or industrial equipment using diesel power and hydraulic devices. Graduates find work with truck and heavy equipment dealers, railroads, marine operations, industrial maintenance, auto, and RV repair.

MFG 100	Foundational Skills for the Trades
DHET 104	Electrical Systems

Early Childhood Education

Prepares graduates to work in preschool and childcare programs as early childhood education teachers and includes hands on training in the Home and Family Life Center.

ECED 105	Introduction Early Childhood Education
ECED 120	Practicum: Nurturing Relationships
ECED 132	Infants/Toddler Care
ECED 170	Environments Young Child
ECED 204	Music and Movement For Young Children
ECED 220	Arts & Crafts For Young Children
ECED 262	Practicum V/Practice
EDUC 204	Inclusive Education-Birth through 21 Focus
EDUC 205	Introduction to Education w/Field Experience:DIV

Health Occupations/Nursing Assistant

LCC's Nursing Assistant program provides the content and experience to prepare students to take the State of Washington Nursing Assistant certification exam.

AH 114	Healthcare Communication Skills
NURS 090	Nursing Assistant

Machine Trades

Prepares graduates for a job as a machinist, millwright, machine operator, tool and die maker, and occupations related to manufacturing.

BLPT 150	Machinists Blueprint Reading
MASP 111	Machine Shop I
MASP 112	Machine Shop II
MASP 113	Machine Shop III
MFG 100	Foundational Skills for the Trades

Manufacturing Occupations

Provides a strong foundation in production, machining and welding processes providing access to many jobs in industries that use machine tools and fabrication processes to produce goods. This certificate includes courses that can be applied to more specialized degrees and certificates.

ENGL 110	Industrial Communications
MFG 100	Foundational Skills for the Trades
MATH 106	Industrial Mathematics

Medical Assistant

Students develop knowledge and skills necessary for employment in clinical and administrative support areas of medical clinics.

CS 110	Microcomputer Applications
MATH 105	Math for Health Sciences
MEDA 101	Medical Vocabulary I
MEDA 102	Medical Vocabulary II
MEDA 120	Survey of Human A&P
MEDA 122	Law & Ethics in the Medical Office
MEDA 162	Examining Room Procedures II

Welding

Prepares graduates for the state commercial welding examination or qualify for welding jobs in manufacturing, maintenance, or instruction.

BLPT 160	Blueprint Reading for Welders
MFG 100	Foundational Skills for the Trades
WELD 154	Introduction to Oxy Acetylene
WELD 221	Wire Machine
WELD 254	ARC Welding

Program Specialist Jill Yates will help each student register for the classes they need: 360.442.2584 or jyates@lowercolumbia.edu

Corporate & Continuing Education

WINTER LEADERSHIP SERIES: Going from Coworker to Supervisor

Today's supervisor is usually a top performer who gets promoted with little or no training on how to be an effective leader. In this series participants will discover how to make a successful transition from employee to manager through learning the basics of business, problem solving, and conflict resolution. Discuss how to manage time and deal with the constant demands of a managerial job. Work in teams to learn practical skills that will help you understand how to influence and direct other people's performance. Topics that are included are listed below.

Thursdays, 8:30-11:30 a.m., February 7–March 7, 2019
LCC Don Talley Building, Room 201

Fundamentals of Leadership

Achieve a new level of awareness of leadership type to enhance leadership effectiveness and performance. Develop your philosophy of leadership as it aligns to core beliefs and values. Discuss how to manage your time and deal with the constant demands of a managerial job.

Emotional Intelligence in Supervision

Discover how Emotional Intelligence can influence the approach and response to conflict within your team and help to build a framework for solving problems to foster better relationships moving forward.

Communication Essentials and Self-Concept

Communication starts with the self. At the end of this training participants will have a better understanding of how self-perception impacts communication with others. They will focus on identity management strategies used to influence how other perception.

Motivating Yourself and Others

Explore ways to motivate yourself and your team with a very concrete but effective methodology. In this training, participants will learn about multiple theories, such as Maslow's Hierarchy of Needs, Herzberg's Motivation and Hygiene Factors, and how to practically apply them to the workplace.

Identify Conflict. Solve Problems

Participants will improve relationships with coworkers, clients, and managers and find ways through conflict back to cooperation. This training is focused on effective conflict resolution and reveals simple, repeatable techniques that apply in most business situations.

\$595/ Buy one, get additional registrations at a \$100 discount from the same organization.



For more information, contact Hahli Rogers at 360.442.2611 or Heidi Hamer at 360.442.2603

ENGAGE YOUNG MINDS

Corporate and Continuing Education offers classes and workshops throughout the year to engage your children in fun educational experiences. For details about any of these activities please call 360.442.2610 or email Hahli Rogers at hrogers@lowercolumbia.edu.

High Tech U
April 2, 3, 4, 2019

Try-A-Trade
May 17, 2019



Workforce Training

Flagger Certification

Learn professional flagging techniques and proper work zone set-up in accordance with standards and guidelines of the Federal Manual on Uniform Traffic Control Devices (MUTCD), Washington Modifications to the MUTCD, L & I WAC 296-155-305, and WSDOT State Standard Specifications. Upon successful completion, receive both the Washington State Department of Transportation (WSDOT) and American Traffic Safety Services Association (ATSSA) flagger cards (accepted in most other states) valid for 3 years. Fee includes textbook and ID cards. Rich Bunker, Master Instructor, for American Traffic Safety Services Association (ATSSA). Students must bring a photo ID to class. \$75

For more information or to register, please contact Mary Harris at 360.442.2602 or mharris@lowercolumbia.edu. Call or email for a current schedule. Flagger Re-Certification also available.

Professional Vocational Relationships: Canvas Online

Examines the legal and regulatory frameworks of practical nursing. Presents concepts of effective communication in health care settings among employees and employers. Explores conflict resolution and teamwork strategies. Discusses professional boundaries, stress management, chain of command, and professionalism as it relates to the licensed practical nurse role and scope. This course fulfills the Washington State requirements for professional relationship content for those applying for licensure as a practical nurse in Washington State. Registration required. Online using Canvas. (Ward) \$150. For more information, please contact Heidi Hamer at 360.442.2603 or hhamer@lowercolumbia.edu.

CLCG 050 A 8980 Online

Freight Broker/Agent Training Online!

Learn the skills you need in order to be a successful Freight Broker/Agent. In this growing industry, as a service-based business, you connect shippers and manufacturers with transportation companies and manage those shipments. Register at <https://careertraining.ed2go.com/lccbic> or contact mharris@lowercolumbia.edu for more information. \$1,895

HIV/AIDS Education for Health Care Providers

LCC offers both 4 and 7-hour HIV/AIDS certification that meets Washington Department of Health Professional Licensing requirements. Follow these steps to take your course: register in Admissions, purchase your text in the College Bookstore, and check out the DVDs in the LCC College Library. Complete instructions are included in your text. Contact Mary Harris, 360.442.2602 or mharris@lowercolumbia.edu, for additional information.

4 hour HIV/AIDS Certification, register for:
SFTY 046 5375 \$45.00

7 hour HIV/AIDS Certification, register for:
SFTY 045 5370 \$70.00

Small Business Entrepreneur Certification-ONLINE

The Small Business Development Center and Lower Columbia College are partnering to offer a Small Business Entrepreneur Certification. Contact Jerry Petrick at the Longview Small Business Development Center at jerry.petrick@wsbdc.org or call 360.578.5449. Additional information is also available by calling LCC Continuing Education at 360.442.2602 or visiting www.campusce.net/lcc.



CDL Training

LCC's Corporate & Continuing Education Department offers a CDL training course for Class A and Class B licenses. The CDL Program has the option of 4 or 8 week training course depending on the quarter. The training consists of 20-40 hours of classroom instruction and 28-120 hours of driving and vehicle instruction based on the class of the license. Training is limited to students that meet the program requirements. For more information, please contact Heidi Hamer at 360.442.2603 or hhamer@lowercolumbia.edu.

Class A sessions start January 14 and February 18.

Business & Professional Development

Corporate & Continuing Education offers a variety of services supporting workforce development and corporate training. Our training team delivers customized, on-demand training programs that enhance professional and personal growth in order to increase local economic competitiveness. We will partner with you to build the best training program for your workforce.

Our Process:

Needs Assessment: CCE trainers will meet with you to discuss training needs and skill gaps in your workforce.

Program Development: The CCE training team will partner to develop a customized training program that meets your organizational goals.

Customized Delivery: Training can be held on or off site and performed according to customer requirements. The CCE training team can deliver coursework online, in person, or in a hybrid model.

Sample Training Topics: Leadership, management & supervision, quality assurance, business computer applications, customer service, and other areas critical to organizational success. **You can also build your own!**

*Are you passionate about a particular subject
and would love to share with others?
Continuing Education would like to speak to you!*

*Call Mary Harris at 360.442.2602
for more information!*

Kick the Winter Blues!

Take a fitness class, learn about volcanoes, get creative in an art class, invest time in your career...
do something for you in 2019!

Tai Chi for Health *NEW!*

Slow and gentle Sun (soon) style Tai Chi movements that increase muscular strength, improve flexibility and facilitate mindfulness to help relieve pain, reduce stress and improve/maintain balance. The program contains a carefully constructed set of warming-up and cooling-down exercises, Qigong breathing exercises, a Basic Core six movements, and an Extension six movements. Appropriate for individuals with arthritis and other chronic conditions or those looking to manage stress, maintain vitality, and fall prevention. Students practice at their own comfort level. GYM 210 (Eastman) \$65

Session One

CLCE 028 A 8190 TTh 1/10-2/14 7-8 a.m.

Session Two

CLCE 028 B 8191 TTh 2/19-3/26 7-8 a.m.

NIA Functional Fitness

NIA (Non-impact Aerobics) is a form of fusion fitness, combining classic movement forms which encompasses martial arts, healing arts, yoga, and the dance arts. Suitable for all ages, NIA is a workout, practice, and lifestyle that fosters vitality and well-being. GYM 210 (Sudar) \$65

Session One (No Class 1/21 or 2/18)

CLCE 015 A 8070 MW 1/9-2/20 7-8 a.m.

Session Two

CLCE 015 B 8071 MW 2/25-3/27 7-8 a.m.

Beginner Barre

Beginner barre is an in-depth introduction to the practices of barre. This class focuses on strengthening and toning the entire body by training small movements that isolate muscles followed immediately by a stretching session to help create those long lean muscles. While barre uses concepts and terminology from ballet, there are also foundations in yoga, Pilates, and weight training, but no prior experience in any of those areas is needed! GYM 210 (McMullan) \$59

Session One (No class 2/18)

CLCE 029 A 8250 MW 1/28-2/20 11:30-12:30 p.m.

Session Two

CLCE 029 B 8255 MW 2/25-3/20 11:30-12:30 p.m.

Mat Pilates

This class will consist of a series of exercises from within the Pilates Method designed specifically to be performed on the mat. Benefits of Pilates exercises include improved flexibility, muscle tone, body balance, spinal support, low back health, sports performance, and body-mind awareness. Improve your core strength in a safe manner. Appropriate for all levels, however students need to be able to perform exercises on the floor using a mat. Bring a ¼" exercise mat to class. GYM 210 (Skerbeck) \$65

Session One (No Class 1/21 or 2/18)

CLCE 034 A 8215 MW 1/9-2/20 5:30-6:30 p.m.

Session Two

CLCE 034 B 8220 MW 2/25-3/27 5:30-6:30 p.m.

Zumba Fitness

The Zumba workout combines high-energy dance moves with traditional exercises such as lunges, squats and arm curls. Upbeat music like the merengue, salsa and mambo keep the energy high but alternate between slow and fast, keeping you on your toes! Zumba is fun to do and can be a great way to lift your spirits all while getting into shape and burning as many as 540 calories in the hour class! GYM 210 (Sanchez) \$65

Session One

CLCE 030 A 8195 TTh 1/10-2/14 5:30-6:30 p.m.

Session Two

CLCE 030 B 8196 TTh 2/19-3/26 5:30-6:30 p.m.

Keep calm
and enjoy
winter



Health & Wellness

Better Bones and Balance

The Better Bones and Balance course has been designed to gradually improve balance and strength and significantly slow the rate of bone loss. Our classes are safe for individuals with osteoporosis and osteopenia and appropriate for all ages. Bring a pair of indoor shoes and hand weights (3, 4, or 5 pounds). Classes meet at Youth and Family Link. (Swanson/Carroll) \$55 *No Class 1/21 or 2/18*

CLCE 036 A	8235	MW	1/9-3/6	8:00-8:50 a.m.
CLCE 036 B	8240	MW	1/9-3/6	9:00-9:50 a.m.

Beginning Better Bones & Balance

For beginners or anyone who prefers a lower intensity class. Hand weights (3, 4, or 5 pounds) are optional. Classes meet at the Youth and Family Link Gym. (Swanson/Carroll) \$55 *No Class 1/21 or 2/18*

CLCE 032 A	8205	MW	1/9-3/6	10:00-10:50 a.m.
------------	------	----	---------	------------------

The Power of Movement: Chair Exercises

This class is for you if you haven't exercised for a while, or you're being released from an injury. Stretching, strengthening and having fun is the basis for this class. Some standing and lots of chair exercises. The power of movement is what it's all about. Classes meet at the Youth and Family Link Gym. (Swanson/Carroll) \$55 *No Class 1/21 or 2/18*

CLCE 033 A	8210	MW	1/9-3/6	11:00-11:50 a.m.
------------	------	----	---------	------------------

Low Impact Aerobics

Increase stamina, flexibility and cardio endurance in our Low Impact Aerobics class! Movements are gentle on the joints and easy to follow. From beginning to advanced levels of intensity, work at your own pace! Classes meet at the Youth and Family Link Gym. (Swanson) \$20 for *Better Bones & Balance* registered students, item 8200; \$25 *Low Impact Aerobics* only, item 8201.

CLCE 031 A	8200/8201	Th	1/10-3/7	10:15-11:05 a.m.
------------	-----------	----	----------	------------------

Aquatic Fitness

Did you know that exercising in water makes you feel up to 90 percent lighter, according to the American Council on Exercise? This reduces the impact on your joints, creating an ideal exercise environment for those with arthritis, back problems, foot/leg injuries and knee problems and is also perfect for pregnant women. Dick Mealy Pool at Mark Morris (Dickey) \$65 per session

Session One (No Class 1/21 or 2/18)

CLCE 035 A	8225	MTTh	1/7-2/28	10:50-11:45 a.m.
------------	------	------	----------	------------------

Session Two (No Class 4/1-4/4)

CLCE 035 B	8226	MTTh	3/4-5/2	10:50-11:45 a.m.
------------	------	------	---------	------------------

Spin Fitness

Bring on the Britney Spears, Lil Jon, and Katy Perry... this will be the sweatiest party you've ever been to! This full body workout rocks to the beat of the music involving sprints, push-ups, climbing hills, hand weights, and core work. This 50 minute class will leave you feeling strong and energized! Get ready to 'hit the corners' and 'tap it back' to transform the way you look and feel. Hop on a stationary bike and join the fun! GYM 210 (Lane) \$69

Session One

CLCE 037 A	8244	TTh	1/10-2/14	4:30-5:20 p.m.
------------	------	-----	-----------	----------------

Session Two

CLCE 037 B	8245	TTh	2/19-3/26	4:30-5:20 p.m.
------------	------	-----	-----------	----------------

Lose Weight and Keep It Off Online!

Discover how to establish a healthy approach to successful weight loss and weight maintenance for a lifetime. \$99. **Register at www.ed2go.com/lccbic**

Are you passionate about a particular subject and would love to share with others? Continuing Education would like to speak to you! Call Mary Harris at 360.442.2602 for more information!

Volcanoes of the World: A Local and Global Perspective-NEW

Volcanic eruptions are among the most awe inspiring and dramatic consequences of our active planet. In this class we will examine the distribution of Earth's volcanoes and how they work including their relationship to plate tectonics, earthquakes, and climate. Focus will be given to understanding how the Earth's interior melts to form magmas, how magmas rise to the surface, and the processes that lead to eruption. Concepts will be evaluated within the context of the spectacular volcanic landscapes of the Pacific Northwest and within a broader, global framework. HSB 139 (Salisbury) \$99 *No Class 1/21 or 2/18*

CLCE 020 A	8110	M	1/7-3/4	5-7 p.m.
------------	------	---	---------	----------



Art & Culture

Color Theory *NEW!*

This course investigates the nature of color as it applies to pigments. We will learn to identify color, temperature, undertone, opacity and transparency, tinting strength, light fastness, color value and mixing techniques. The goal of the instruction is to provide painters with the foundation and understanding of their pallet, and to establish confidence in its use. This is a valuable class for beginning painters, and those who experience challenges in producing successful color handling. To expedite class exercise we will work with acrylics. Dedicated oil painters can work with oils if they choose. MAN 109 (Wade) \$99 *No class 1/21 & 2/18*

CLCE 018 A 8085 M 1/14-3/25 5-7 p.m.

Painting Techniques

Gain control of the art of painting. We will take painting from palette layout to finished works through the investigation of tools, material handling, color mixing, and traditional techniques. The class is designed for those who are embarking on painting as well as those with experience who want to refine their skills and techniques. Although acrylics will be preferred, students with experience who work in oils are encouraged to use that medium. MAN 109 (Wade) \$125

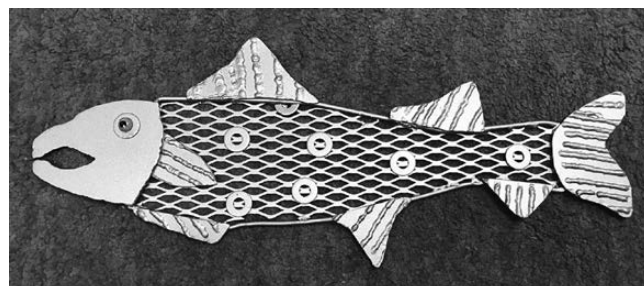
CLCE 018 B 8090 W 1/16-3/13 5-8 p.m.



Mixed Media Drawing

Discover drawing with a variety of materials and surfaces. Create finished products such as unique gift boxes, greeting cards, and more. We'll work with both dry and water-based materials, on surfaces ranging from paper to glass. Investigate techniques for creating representational and abstract imagery with pen and ink, watercolor pencils, colored pencils, pastels, glass paints, and unconventional tools. For those who enjoy drawing, this course will expand your tool box of possibilities. Whether you are an experienced artist or someone wanting to explore your creative side, this class is for you! MAN 148 (Wade) \$99

CLCE 018 C 8095 Th 1/17-3/14 5-7 p.m.



Metal Art

This class will inspire you to find scraps and assist you in exploring different techniques to express your creative side. You will review safety and welding techniques and develop an understanding of different materials and how to manipulate them. You will explore different forms of metal sculptures and even produce a work of your own art by class end. LCC Welding Shop (Pittsley) \$99 *No class 1/21 & 2/18*

CLCE 019 A 8105 M 1/14-3/25 6-8 p.m.

Community Choir

Every voice matters in this class of community members. Participate and harmonize with peers as you expand and develop your vocal range. You will also have the opportunity to perform in the Rose Center! RCA 102 (Challed)

CLCE 021 A 8115 M 1/7-3/11 7-9 p.m.

Symphonic Band

Non-credit section for community members. Offers rehearsal and performances of standard concert band repertoire. Activities of this college/community band include performances for special civic events in community and public concerts. Instructor approval is required to enter this course. RCA 102 (Davis)

CLCE 023 A 8125 Th 1/10-3/14 7-9 p.m.

Travel & Outdoors

Portland Art Museum

Travel with us to the oldest art museum in the Pacific Northwest! The Portland Art Museum is home to more than 112,000 square feet of galleries reflecting the history of art from ancient times to the present. The museum has a collection of some 42,000 objects, and is one of the leading cultural institutions in the Pacific Northwest. Transportation to and from the museum is included. (Wade) \$40

CLCE 038 A 8550 Sa 3/2 9 a.m.-5 p.m.



Computers & Technology

Learn to Buy and Sell on eBay Online!

Auction pros teach you how to work from home or earn extra income by buying and selling goods online. Register at www.ed2go.com/lccbic \$99

Blogging and Podcasting for Beginners Online!

Learn how to plan and create your very own blog and podcast. Through hands-on exercises, you will discover the benefits of using free web tools like Blogger, WordPress, Audacity, and YouTube. You will find that creating a blog and podcast is much easier than you ever imagined. Register at www.ed2go.com/lccbic \$115

Career Connected Learning

Career Connected Learning program focuses on increasing the opportunities for real-world learning experiences to connect students with local employers. These experiences progressively build career awareness and skills. Through these experiences, students have the opportunity to develop soft skills as well as job skills. Want to learn more? Contact Brian DelMar at bdelmar@lowercolumbia.edu or call 360.442.2610.

CTE Dual Credits:

A partnership between college and high school instructors designed to guide local students into high-skill, high-wage careers with local industries. High school students can earn dual credit at both their high school, and at Lower Columbia College, without leaving high school or doing additional homework!

Cooperative Education:

An opportunity to earn up to 15 college credits for work experience in your field of study. Students enrolled in Cooperative Education will build their portfolio and make themselves marketable in today's competitive job market. Students will also intern at a local business to gain real-world work experience.

Special Events:

Career Connected Learning has a variety of events that engage students from second grade through LCC students. Here are some events that happen yearly: Family STEM Night, High Tech U, Try-A-Trade, Company Tours, Mock Interviews, and Kid's College. Learn more at lowercolumbia.edu/stem.

Online Learning

Visit our online learning website for a list of our over 300 instructor facilitated online courses at www.ed2go.com/lccbic.

About Corporate & Continuing Education

For the latest information about Corporate & Continuing Education, see lowercolumbia.edu/ce or visit us on Facebook at facebook.com/LCC.ContinuingEd

It's easy to sign up for classes:

- Sign up online at lowercolumbia.edu/ce
- OR call 360.442.2600 and 360.442.2840 to sign up over the phone with Visa or MasterCard. If we are away from the phone, please leave your name and return phone number on our voicemail and we will call you back.
- OR fill out the form at the back of this schedule and mail it to us with a check, money order, or credit card information.
- OR fax the form to 360.442.2609 with credit card info.

Questions? Call us 360.442.2600

Refund Policy:

Written notice must be received 3 business days prior to the course start date in order to receive a refund on courses you have enrolled in. Refunds will be issued automatically if a course is closed or cancelled.

Online Learning:

We offer online, short-term, non-credit courses for personal or professional development. To register for any of these classes or to view more course listings, in addition to the ones we have listed throughout, go to the provider websites listed below. Our online providers include:

■ ed2go

www.ed2go.com/lccbic

Short term, affordable and fun classes geared just for you. Classes require only Internet access and an email account. These 6-week, highly interactive classes start the third Wednesday of each month. Choose from Career & Professional, Computers & Technology, Personal Development, Writing & Publishing, and more!

■ ed2go Online Career Training careertraining.ed2go.com/lccbic

Longer term, open enrollment training programs designed to provide the skills and training you need to acquire professional level positions for many in-demand occupations. Programs are designed by teams of professionals from respective fields, providing you with effective web-based learning programs. Instructors/mentors are actively involved in your online learning experience, responding to your questions or concerns, and encouraging and motivating you to succeed. Choose from Business, Construction & Trades, Health & Fitness, Hospitality, IT & Computer Programming, Legal, Writing, and more!

LCC Corporate & Continuing Education



Learn from
the comfort
of home!

Expert Instructor

24-Hour Access

Online Discussion Areas

6 Weeks of Instruction

Hundreds of courses to choose from

Monthly start sessions

Our **instructor-led** online courses are informative, fun, convenient, and highly interactive. We focus on creating warm, supportive communities for our learners. New course sessions begin monthly. Visit our website to view start dates for the courses that interest you.

Complete any of these courses entirely from your home or office and at any time of the day or night.

Prices start as low as: **\$99**

INSTRUCTOR LED NON-CREDIT ONLINE COURSES

A to Z Grant Writing

Learn how to research and develop relationships with potential funding sources, organize grant writing campaigns, and prepare proposals.

Accounting Fundamentals

Give yourself skills that are in high demand by exploring corporate

Computer Skills for the Workplace

Gain a working knowledge of the computer skills you'll need to succeed in today's job market.

Creating Web Pages

Learn the basics of HTML so you can design, create, and post your very own site on the Web.

Effective Business Writing

Improve your career prospects by learning how to develop powerful written documents that draw readers in and keep them motivated to continue to the end.

Fundamentals of Supervision and Management

Learn the people skills required to motivate and delegate, and learn tools for solving problems and resolving conflicts.

Grammar Refresher

Gain confidence in your ability to produce clean, grammatically correct documents and speeches.

Intermediate Microsoft Excel

Take your Microsoft Excel skills to the next level as you master charts, PivotTables, Slicers, Sparklines, and other advanced Excel features.

Introduction to CSS3 and HTML5

Learn to create state-of-the-art Web sites using modern CSS3 and HTML5 techniques.

Introduction to Final Cut Pro X

Make the leap from home video enthusiast to professional video editor using Apple's revolutionary Final Cut Pro X editing software.

Introduction to Google Analytics

Learn how to track and generate traffic to your website, create reports, and analyze data with Google's free, state-of-the-art Web analytics tools.

Introduction to Microsoft Excel

Become proficient in Microsoft Excel and discover countless shortcuts, tricks, and features for creating and formatting worksheets quickly and efficiently.

Introduction to SQL

Gain a solid working knowledge of the most powerful and widely used database programming language.

Leadership

Gain the respect and admiration of others, exert more control over your destiny, and enjoy success in your professional and personal life.

Performing Payroll in QuickBooks

Learn how to use QuickBooks 2013 to create paychecks, pay tax liabilities, and produce forms and reports.

Writing Essentials

Master the essentials of writing so you can excel at business communications, express yourself clearly online, and take your creative literary talents to a new level.

Enroll Now!

ed2go.com/lccbic

(360) 442-2602

Over 300 online courses available

ed2go

0718-01



Mail to: Corporate and
Continuing Education
1600 Maple, PO Box 3010
Longview, WA 98632
Phone: 360.442.2840

Year 2019
Winter Spring
Summer Fall

Register Online

for Corporate &
Continuing Education!
lowercolumbia.edu/ce

Sign up now! Corporate & Continuing Education

**Student ID (if known) DOB (mm/dd/yyyy) X _____
Signature (required for enrollment)

Last Name First Name Middle Initial Previous Last Name

Mailing Address City State Zip Code

E-mail Address Home Phone Work Phone Cell Phone

ENROLLMENT INFORMATION

Item#	Course Description	Dept.	Course	Section	Room	Days	Time	Date	Fees
1111	Sample Course Title	CLCE	9999	A	DTV 201	MW	7 p.m.	1/7	\$ 49
Total									

Have you ever attended classes at LCC?

☐ Yes ☐ No Last year attended _____

How did you hear about this class?

Any other classes you'd like to see at LCC?

Mail your completed form with payment
to complete enrollment.

REFUND POLICY: Written notice must be received 3 business days prior to the course start date in order to receive a refund on courses you have enrolled in. Refunds will be issued automatically if a course is closed or canceled.

Class enrollment is first-come, first-served. Register early to secure your place in your preferred courses

***The Student ID # is assigned by Lower Columbia College to provide specific identification for every student.
Your Student ID Number is NOT your Social Security number.*

COLLEGE SERVICES INFORMATION

■ ADVISING

New students may contact entry advisors daily through the Entry Center in the Admissions Center. Returning students should contact their advisors through the Entry Center or the LCC Directory at lcc.ctc.edu/employees if they have questions.

360.442.2311 lowercolumbia.edu/advising

■ CAREER AND EMPLOYMENT SERVICES

Assess your interests, explore careers, research training, find openings in your field, and get help with career planning in the Admissions Center.

360.442.2330 lowercolumbia.edu/careercenter

■ CHILD CARE/PRESCHOOL

Child care for children, one month to six years, is available for LCC students, staff, faculty, and community members in The Early Learning Center. Children are cared for in a quality environment while learning skills and concepts based on best practices and current research in Early Childhood Education.

360.442.2890 lowercolumbia.edu/childcare

■ COOPERATIVE EDUCATION

Contracted work experience related to a degree or certificate program coordinated with the employer, instructor/coordinator, and student to meet specific learning objectives. See class listings for more info.

lowercolumbia.edu/cooperative-education

■ COUNSELING CENTER

Counselors help students with academic, personal, and crisis situations. Find out about student success groups too.

360.442.2311 lowercolumbia.edu/counseling

■ DINING

The Fork & Flame café: 8 a.m.-1:30 p.m.; Espresso Bar: 7:30 a.m.-3 p.m. Monday–Friday. Located in the Student Center.

■ DISABILITY SUPPORT SERVICES

If you have a disability, the Disability Support Services Office in Admissions Center Room 143, may be able to provide reasonable accommodation, arrange auxiliary aids, advising, admission, registration, referrals, counseling, educational and vocational planning and voter registration.

360.442.2341 lowercolumbia.edu/disability

■ FINANCIAL AID

Apply early for financial aid; processing takes 3-6 weeks. Application and deadline information is located on page 7.

360.442.2390 lowercolumbia.edu/finaid

■ GED TESTING

GED testing at LCC is all computer-based. You can register, schedule, and pay online 24/7 and get your test results immediately.

360.442.2353 lowercolumbia.edu/ged

■ INSURANCE AVAILABLE TO STUDENTS

LCC offers an accident and sickness insurance plan designed for students. Brochures are available in the Admission Center.

■ LEARNING COMMONS AND LIBRARY

Hours: Monday–Thursday: 7:30 a.m.-7 p.m.; Friday: 7:30 a.m.-4 p.m.; Saturday: 10 a.m.-2 p.m.

lowercolumbia.edu/library

■ PLACEMENT TESTING

Students who plan to earn a degree or certificate from Lower Columbia College, or who plan to transfer to a four-year institution, can use multiple measures for the purpose of determining English and Math placement. Placement options include, but are not limited to, Directed Self-Placement, Smarter Balanced scores, High School transcripts, and previous college course work. Placement assessments are offered in the Admissions Center testing lab, open 10 a.m.-5 p.m. Monday-Thursday.

360.442.2353 lowercolumbia.edu/placement

■ RUNNING START

High School juniors and seniors may be eligible to take college classes for credit toward both their high school diploma and their college degree program. Advance planning is required.

360.442.2352 lowercolumbia.edu/running-start

■ TECH PREP/CAREER PATHWAYS

High school students can take specific high school courses and receive credit toward both their high school diploma and LCC degree. See your high school counselor for details.

■ TRIO PROGRAMS

TRiO Student Support Services is offered at LCC for students who are first-generation, low-income, or students with disabilities and are interested in earning a bachelor's degree. Contact Jodi Reid, Director of TRiO Programs, for more information.

jreid@lowercolumbia.edu

■ TUTORING SERVICES

Tutoring Services provides one-on-one and small group sessions in nearly every discipline including Canvas orientations. Tutors can assist with specific course content, plus general study skills, such as time management, lecture note-taking and textbook reading. Tutoring is offered in the Learning Commons: Mon-Thurs 8 a.m.-7 p.m., Fri 8 a.m.-4 p.m., and Sat 10 a.m.-2 p.m.

lowercolumbia.edu/tutoring

■ VETERAN RESOURCE CORNER

The Veteran Resource Corner is located on the second floor of the Student Center, next to ASLCC. The area provides a veteran-friendly academic environment for veteran students and their dependents. It is also a place where veteran students can access vital resources and benefit information. Contact Connie O'Brien-Larsen for details.

cobrienlarsen@lowercolumbia.edu

■ WITHDRAWAL

If you leave a class without completing it, withdraw or arrange an "incomplete" with your instructor in order to avoid receiving a poor final grade. Forms and information are available in the Registration Office. Check withdrawal deadlines on page 4. If your class ends before the end of the quarter, you may withdraw through the last day of instruction for that class.

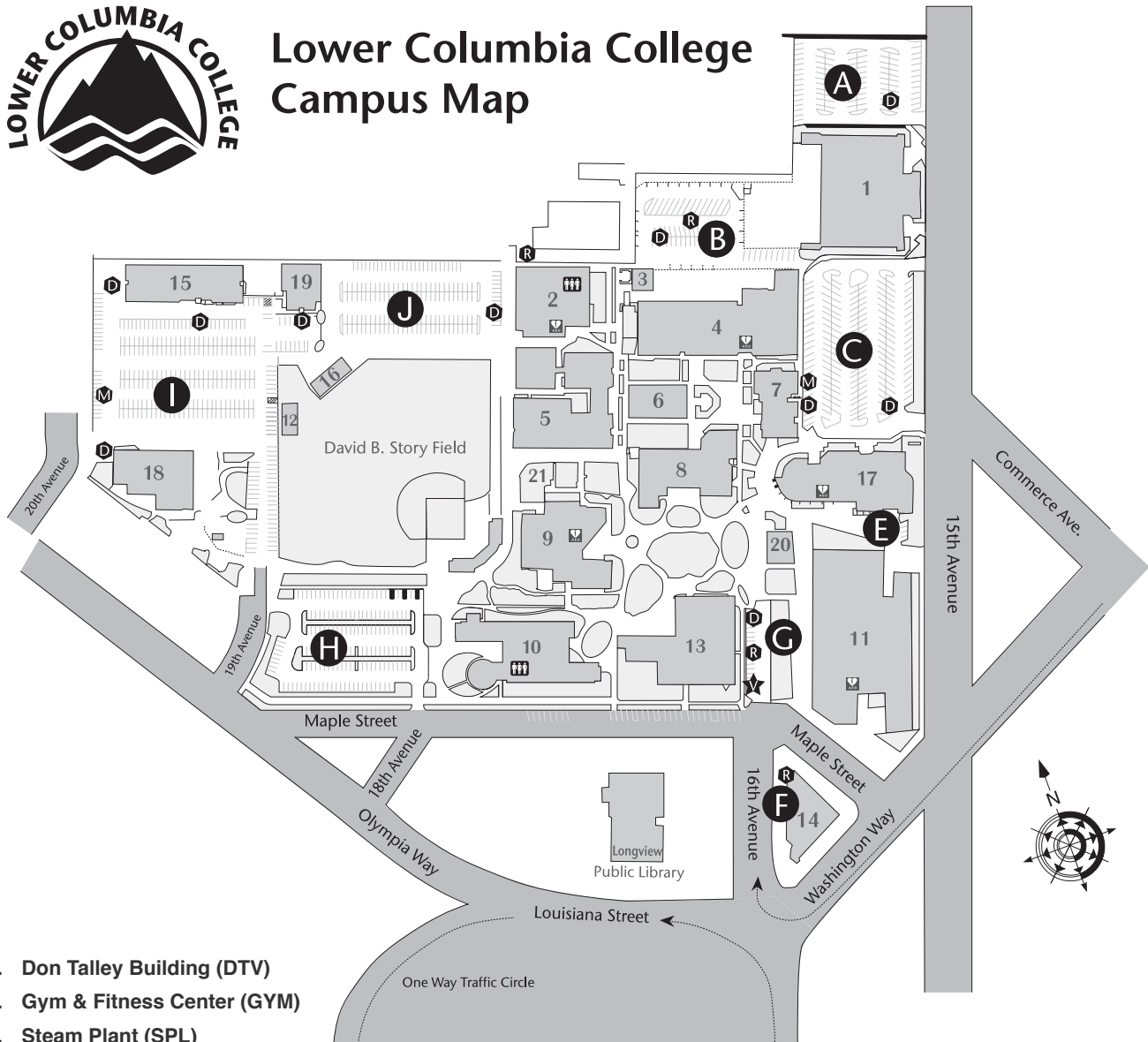
■ WORKER RETRAINING

For dislocated workers and others seeking employment, training orientations are offered. Go to startnextquarter.org to sign up, call the number below, or visit the Career Center's front desk for assistance.

360.442.2330 lowercolumbia.edu/worker-retraining



Lower Columbia College Campus Map



1. Don Talley Building (DTV)
2. Gym & Fitness Center (GYM)
3. Steam Plant (SPL)
4. Vocational Building (VOC)
5. Applied Arts Building (AAR)
6. Science Building (SCI)
7. Physical Science Center (PSC)
8. Admissions Center (ADC)
 - Career Services
 - Cashiers
 - Disability Support Services
 - Financial Aid
 - Registration
 - Testing Center
9. Library- Alan Thompson (LIB)
 - eLearning
 - Regional University Center
 - Tutoring Center
10. Health and Science Building (HSB)
11. Rose Center for the Arts (RCA)

12. International Center (INC)
13. Main Building (MAN)
14. Administration Building (ADM)
15. Head Start/Home & Family Life (HFL)
16. Batting Barn (BTB)
17. Student Center (STC)
 - Bookstore
 - Dining
 - Student Activities Office
 - Student IDs/Information
18. Campus Services Building (CMS)
19. Head Start East Building (HSE)
20. Pavilion
21. Learning & Healing Garden

- A - J Parking Lots
- D Disabled Parking
- R Reserved Parking
- M Motorcycle Parking
- ★ Visitors
- AED External Defibrillator (AED)
- Gender Neutral Restroom

Note: Buildings are not physically numbered. The numbers on this map are for key purposes only. Parking permits are required in all lots.



1600 Maple Street
PO Box 3010
Longview, WA 98632-0310

PERIODICALS

WSS CAR-RT PRESORT RESIDENTIAL CUSTOMER

Come to LCC and discover what you can be.

Whether you are preparing to enter or move up in the workforce, planning to transfer to a university, or just want to learn something new, LCC offers a high quality, affordable option located right here in the community.

Take a look inside and start planning your next chapter.

- What's new at LCC – page 3
- How to pay for college – page 7
- University transfer options – page 8
- Preparing for the workforce – page 9
- Special services for veterans – page 10
- Join the LCC Alumni Association – page 11
- See if you qualify for special funding for college – page 13
- Class offerings – page 15
- Sign up to receive emergency text alerts from LCC – page 18
- Donate to the Student Success Fund – page 21
- Arts and Entertainment – page 24
- How to attend LCC tuition-free while you're in high school – page 25
- Lower Columbia Regional University Center – page 25
- Host an International Student – page 34
- Corporate and Continuing Education – page 38

