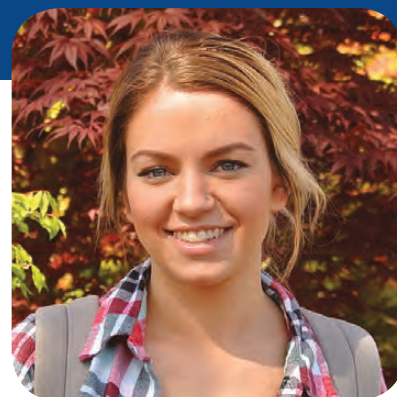




LOWER COLUMBIA COLLEGE

*The Smart Choice!*

FALL 2017 CLASS SCHEDULE



FALL CLASSES BEGIN SEPTEMBER 18

What's Inside: Arts & Entertainment Events at LCC on Page 24

## What's New

Coming Events .....	24
Dates & Deadlines .....	4
Diversity Classes .....	14
Final Exam Schedule .....	14
Learning Communities .....	10
Online Learning .....	12
Special Funding Options .....	13

## How to Enroll

Bookstore Information .....	16
Campus Map .....	47
College Services Information .....	46
Financial Aid .....	7
Registration .....	4-5
Tuition & Fees .....	6

## Class Listings

Accounting .....	15
Allied Health .....	15
American Sign Language .....	15
Anthropology .....	15
Art .....	15
Astronomy .....	16
Automotive Technology .....	17

Biology .....	17
Business Administration .....	18
Business Technology .....	18
Chemical Dependency .....	19
Chemistry .....	19
College Success .....	20
Communication Studies .....	20
Computer Science .....	20
Cooperative Education .....	21
Criminal Justice .....	21
Diesel/Heavy Equipment .....	21
Drama .....	21
Early Childhood Education .....	22
Earth Science .....	22
Economics .....	22
Education .....	22
Engineering .....	22
English .....	23
Environmental Science .....	26
Geology .....	26
High School Completion .....	26
History .....	27
Health .....	27
Human Development .....	27
Humanities .....	27

Individualized Certificate .....	27
Information Technology .....	27
Machine Trades .....	28
Manufacturing .....	28
Mathematics .....	29
Medical Assisting .....	30
Music .....	30
Nursing .....	32
Nutrition .....	32
Oceanography .....	32
Philosophy .....	32
Physical Education .....	32
Physical Science .....	33
Physics .....	33
Political Science .....	33
Process Manufacturing .....	33
Psychology .....	34
Sociology .....	34
Spanish .....	34
Technology .....	34
Welding Technology .....	34
<b>Adult Basic Education .....</b>	<b>36</b>
<b>Continuing Education .....</b>	<b>37</b>

## LCC Office Hours

### Regular Hours:

**Monday–Friday, 8 a.m.–5 p.m.**

### Registration and Entry Center –

**Monday–Friday.....8 a.m.–5 p.m.**

### Cashiering –

**Monday–Friday.....8:15 a.m.–4:30 p.m.**  
(Closed 1-1:30 p.m. for lunch)

**Financial Aid hours are the same as Registration, except Wednesdays, when staff are only available from 11 a.m. until 2 p.m.**

*Student staff can provide limited assistance the rest of the day. Limited help hours give professional staff uninterrupted time to process aid requests and do necessary federal and state reporting.*

## Equal Opportunity, Affirmative Action, and Reasonable Accommodation

Lower Columbia College offers over 70 associate degree and certificate options in a variety of fields, providing a rich complement of technical/professional, basic skills, and continuing education programs. Degree or certificate seeking students must apply for program admission and register in the degree or certificate program. The College will take steps to ensure that lack of English language skills will not be a barrier to admission or participation in vocational education programs.

The College provides equal opportunity in education and employment and does not discriminate on the basis of race, color, national origin, age, perceived or actual physical or mental disability, pregnancy, genetic information, sex, sexual orientation, gender identity, marital status, creed, religion, honorably discharged veteran or military status, or use of a trained guide dog or service animal as required by Title VI of the Civil Rights Act of 1964, Title VII of the Civil Rights Act of 1964, Title IX of the Educational Amendments of 1972, Sections 504 and 508 of the Rehabilitation Act of 1973, the Americans with Disabilities Act and ADA Amendment Act, the Age Discrimination Act of 1975, the Violence Against Women Reauthorization Act and Washington State's Law Against Discrimination, Chapter 49.60 RCW and their implementing regulations.

The following person has been designated to handle inquiries regarding non-discrimination, equal opportunity, affirmative action or the ADA policies or for Title IX/504 compliance issues: Director of Human Resources & Legal Affairs, 1600 Maple Street, Longview, WA 98632, Phone number, 360.442.2120, Phone number/TTY 800.833.6388.

The College publications are available in alternate formats upon request by contacting the Disability Support Services at 360.442.2340.

### About This Schedule:

Every effort is made to ensure that the information in this course schedule is accurate at the time of publication. The College reserves the right to change its class offerings as necessary. For the latest information, please check the online class schedule at [lowercolumbia.edu/classes](http://lowercolumbia.edu/classes)

LCC mails class schedules to all households in Cowlitz County four times each year to inform residents about college programs and services. Because they are addressed to "Residential Customer," we are unable to remove individuals from our distribution route. Schedules can be recycled with your newspapers.

**Volume 9, No. 4, Fall 2017.** LCC Class Schedule (USPS 025-007) is published four times a year (November, February, April and June) by Lower Columbia College. The Lower Columbia College Office of Effectiveness & College Relations is located at 1600 Maple Street, Longview, WA 98632-0310. Periodicals postage paid at Longview, WA and at additional mailing offices.

POSTMASTER: Send address changes to Lower Columbia College, 1600 Maple Street, Longview, WA 98632-0310.

# LCC announces new Associate in Music Degree

Calling all musicians - are you interested in a career in music education or performance? LCC's new Associate in Music degree may be just the ticket. The new degree program offers students foundational music training in technical and academic areas such as:

- Music theory
- Ear training
- Sight singing
- Individual instruction
- Ensemble participation
- Basic keyboarding skills

This degree program meets requirements for the statewide Direct Transfer Agreement (DTA), which ensures a smooth transfer process to public colleges and universities in Washington State.

To earn the Associate in Music-Direct Transfer Agreement (AM-DTA) degree, you must complete a minimum of 101-104 transferable credits, including distribution requirements in Communications, Quantitative/Symbolic Reasoning Skills, Humanities, Natural Sciences, and Social Sciences. A diversity course is also required, as well as enrollment in one or more of LCC's performing ensembles.

Ensemble opportunities for both new and experienced musicians include Symphonic Band, Jazz Ensemble, String Chamber Music, Community Choir, Concert Choir, Bella Voce Choir, and Opera Workshops. Learn more about LCC's Music Program and ensembles at [lowercolumbia.edu/music](http://lowercolumbia.edu/music).

A program planner for the new AM-DTA degree will be available on the LCC website by early July at [lowercolumbia.edu/programs](http://lowercolumbia.edu/programs). There's no need to wait to get started! Here is a suggested fall quarter schedule for students interested in the new degree:

Fall Quarter	
Course	Credits
MUSC 101	5
MUSC 111	1
ENGL& 101	5
Ensemble	2
MUSC 176	1
<b>Total</b>	<b>14</b>

Thanks to generous donations from benefactors Ken and Pat Hanson and others, LCC offers several music scholarship opportunities to students who qualify.

Learn more at [lowercolumbia.edu/scholarships](http://lowercolumbia.edu/scholarships).



The LCC Choir at Carnegie Hall in 2015



# HOW TO REGISTER

Go to [lowercolumbia.edu/registration](http://lowercolumbia.edu/registration) to access the following steps

## New Students

Registration begins June 5 for new students. Apply for admission - no fee to apply: [lowercolumbia.edu/apply](http://lowercolumbia.edu/apply). If needed, staff assistance and computers are available in the Admissions Center.

- 1. Apply for admission**  
Online or in person at the Registration Office.
- 2. Apply for financial aid, if needed.**  
Go to [lowercolumbia.edu/finaid](http://lowercolumbia.edu/finaid) for instructions and forms. More information on page 7.
- 3. Determine your program**  
Visit the Career Center to take an interest assessment, explore careers, and access career resources. The results will help you choose a program leading to a career that is right for you. At the Center, or from your own computer, print out a copy of the program planner(s) for the program(s) of study that interest you. Go to [lowercolumbia.edu/programs](http://lowercolumbia.edu/programs).
- 4. Practice and take a placement test**  
Students who plan to earn a degree or certificate from Lower Columbia College, or who plan to transfer to a four-year institution, can use multiple measures for the purpose of determining English and Math placement. Placement options include, but are not limited to, Directed Self-Placement, Smarter Balanced scores, High School transcripts, and previous college course work. Placement assessments are offered in the Admissions Center testing lab, open 10 a.m.- 5 p.m. Mon–Thurs. More information is available at [lowercolumbia.edu/placement](http://lowercolumbia.edu/placement).
- 5. Attend New Student Orientation & Register**  
Sign up at the Admission Center Testing Lab to attend a New Student Orientation. Prepare by previewing the online class schedule, and bring your placement testing scores and program planner(s) for any areas of study that interest you. We also recommend that you map out a schedule of when you are available for classes and studying.
- 6. Pay your tuition and fees** Tuition is due the Tuesday before classes begin. You may pay online with a credit or debit card or in person at the Cashier in the Admissions Center. If you need more time to pay, see Delayed Tuition Payment options on page 7.

### Non-credit classes:

Continuing Education class listings and registration information begin on page 37.

## Class Full? Get on the Waitlist!

Students may be added to the waitlist through the end of the day, Friday September 8. If openings occur through the third day of the quarter (September 20), you'll be automatically moved from the waitlist into the class. Only students on the waitlist may fill open seats.

Being on the waitlist does not guarantee that you'll get in, or that a new section will be made available. Tuition and fee charges will not include waitlisted classes until you are registered in them. Please stop by the Registration office to remove yourself from a waitlist if you are no longer interested in being enrolled in a class. Check your waitlist status at [lowercolumbia.edu/online-services](http://lowercolumbia.edu/online-services).

## Current Students

Registration begins May 30 for students who have attended LCC within the last year.

- 1. Find out your earliest registration date/time** online at [lowercolumbia.edu](http://lowercolumbia.edu). Student ID Number and Global PIN required.
- 2. Meet with your program advisor** to plan your class schedule and get your Quarterly Registration PIN. If you have not received an email listing your program advisor, contact the Entry Center.
- 3. Register** online or in person at Registration. Students taking more than 18 credits must register in person.
- 4. Pay your tuition and fees** by the deadline listed on the Academic Calendar online. You may pay online with a credit or debit card or in person at the Cashier. See Delayed Tuition Payment options on page 7.

### Which PIN Do You Need?

**Global PIN**—Received from Registration. Use to log in for most online services.

**Quarterly Registration PIN**—Received from your advisor before priority registration; also online during open registration. You need a new one each quarter to register for classes.

## Fall Dates and Deadlines

Veterans/Dependents Priority Registration begins.....	May 26
Priority Registration for Fall begins.....	May 30
Open Registration for Fall begins .....	June 5
Admission deadline for degree/certificate students.....	August 7
Priority application deadline for Fall financial aid .....	August 7
Last day to arrange Fall Administrative Hold.....	August 28
Fall tuition payment due.....	September 12
First day of classes .....	September 18
Last day of online registration .....	September 20
Last day for 100% tuition refund.....	September 22
Last day to withdraw and avoid a "W" .....	September 29
Last day for 50% tuition refund.....	October 6
Last day to apply for Fall graduation .....	October 17
Last day to withdraw from classes.....	November 9
Veterans Day holiday .....	November 10
Thanksgiving Holidays.....	November 23-24
Last day of Fall classes.....	December 1
Fall finals .....	December 5-7

*Cashier, the Entry Center, Financial Aid, Advising, Registration, and Testing are located in the Admissions Center. Questions? Contact the Entry Center, [entry@lowercolumbia.edu](mailto:entry@lowercolumbia.edu), phone 360.442.2311 or toll-free 1.866.900.2311.*

# ONLINE REGISTRATION & PAYMENT

Go to [lowercolumbia.edu/registration](http://lowercolumbia.edu/registration) to access the following steps

## 1. Check Your Registration Date and Time

Choose registration date/time. Log in with your Student ID Number and Global PIN. Schedule an appointment and meet with your Program Advisor 1-2 weeks before you register to select your classes and receive your Quarterly Registration PIN.

## 2. To Register Online

Besides your class list, you'll need your Student ID Number and Quarterly Registration PIN. For classes that require instructor permission, you'll need an Entry Code.

Select Register Online. Follow the instructions and complete your schedule. Don't forget to print your schedule before you leave. If you attempt to register for two classes that meet at the same time or overlap, the computer will block your registration.

## 3. Pay Your Tuition or Set Up a Payment Plan Online!

Paying online is easy and secure. You can use your credit or debit card to pay in full, or set up an automatic payment plan. If you register online, you can pay at the end of your registration session or return later. See Delayed Tuition Payment Options, page 7.

If you register in person, you can still pay online. You'll need your Global PIN, received when you register for the first time.

Tuition is due the Tuesday before classes begin.

## 4. Add or Drop Classes

You may add or drop classes online through the third day of class. Select Register Online. Follow the instructions for adding or dropping a class. Don't forget to print a copy of your revised schedule. You can also handle any adjustments to your tuition or fees online.

## ONLINE REGISTRATION WORKSHEET

Dept.	Course #	Item #	Section	Credits	M	T	W	Th	F	Time	Bldg/Rm	Entry Code

### Alternate Classes


### When can't I use Online Registration?

1. Continuing Education courses
2. GED/ABE/ESL courses
3. High School Completion
4. Independent Studies
5. Employee waivers, Running Start, or National Guard waivers
6. If you last attended LCC more than one year ago
7. If you are taking more than 18 credits

### Online Registration is available

May 30-September 20

### Entry Codes

An Entry Code is a five digit random number issued to students by the instructor of the class as authorization to register for classes requiring "Instructor Permission." Once you have used an entry code, the registration computer will not accept it again.



### Use Online Services

Here are some of the things you can do online:

- Pay your tuition and fees
- Set up a payment plan
- Check tax credit information
- Change your Global PIN
- Print your class schedule
- Print out an unofficial transcript
- Check waitlist status

## TUITION & FEES

### Resident Students (Column A)

Washington resident students must verify that they have lived in Washington for one year and have established residency in the State of Washington, including US Citizenship, permanent resident status, hold an A, E, G, H, I, K or L visa or have “refugee/asylum” status. If your residency cannot be determined at the time of admission, your tuition and fees will be calculated at the non-resident tuition and fee rate. Ask about residency at the Registration Office, 360.442.2370. Complete residency rules are detailed in RCW 28B.15.012.

Even if you are not a permanent resident or US Citizen, you may still qualify to pay in state tuition if you have:

- Resided in Washington state for the three (3) years immediately prior to receiving a high school diploma, and completed the full senior year at a Washington high school, OR completed the equivalent of a high school diploma (GED) and resided in Washington state for the three (3) years immediately before receiving the equivalent of the diploma; and
- Continuously resided in the State since earning the high school diploma or its equivalent.

If you are eligible, complete the HB 1079 affidavit (Washington Higher Education Affidavit/Declaration/Certification form), available in the Registration office in the Admission Center. The original should be submitted to the Lower Columbia College Registration office. Contact the Registrar at 360.442.2372 for additional information.

### Oregon Border County Residents (Column B)

Residents of Oregon Border Counties (Columbia, Clatsop, Multnomah, Washington) for 90 days or more may pay this rate.

### US Citizens & INS Permanent Residents (Column C)

Individuals who have lived in the State of Washington for 90 days or more and who are US Citizens or Permanent Residents, as defined by the INS, may pay this rate.

### Other US Citizens and Foreign Students (Column D)

Those who are not eligible to pay the “Resident Students,” “Oregon Border County Residents,” or “US Citizens and INS Permanent Residents” rates, above, pay this rate. (See Column D.)

### Veterans (Column E)

Special rates are available for some Veterans. See the Veterans’ Office in the Admission Center, or call 360.442.2393 for eligibility information.

### Special Rates for Senior Citizens

If space is available after the first class meeting, Washington residents 60 or older may audit up to two classes for \$2.50 per class plus \$1.40 per credit facilities use fee, \$3.75 per credit technology fee and applicable lab fees.

Tuition and fees may change for 2017-18. When known, they will be posted at [lowercolumbia.edu/tuition](http://lowercolumbia.edu/tuition)

2016-2017 Tuition and Fee Schedule					
(Facilities Use, Technology, Tutor Center, Fitness Center Upgrade fees included)					
	A	B	C	D	E
# Cr.	WA State Residents	Oregon Border Residents	US Citizens & INS Permanent Residents	Foreign & US Citizens Not Meeting Req's	Veterans
1	111.46	120.66	125.26	288.17	88.47
2	222.92	241.32	250.52	576.34	176.94
3	334.38	361.98	375.78	864.51	265.41
4	445.84	482.64	501.04	1,152.68	353.88
5	557.30	603.30	626.30	1,440.85	442.35
6	668.76	723.96	751.56	1,729.02	530.82
7	780.22	844.62	876.82	2,017.19	619.29
8	891.68	965.28	1,002.08	2,305.36	707.76
9	1,003.14	1,085.94	1,127.34	2,593.53	796.23
10	1,114.60	1,206.60	1,252.60	2,881.70	884.70
11	1,170.61	1,267.08	1,315.31	2,944.90	929.54
12	1,226.62	1,327.56	1,378.02	3,008.10	974.38
13	1,278.88	1,384.29	1,436.98	3,067.55	1,015.47
14	1,331.14	1,441.02	1,495.94	3,127.00	1,056.56
15	1,383.40	1,497.75	1,554.90	3,186.45	1,097.65
16	1,435.66	1,554.48	1,613.86	3,245.90	1,138.74
17	1,487.92	1,611.21	1,672.82	3,305.35	1,179.83
18	1,540.18	1,667.94	1,731.78	3,364.80	1,220.92
19	1,632.51	1,769.50	1,837.96	3,633.84	1,290.17
20	1,724.84	1,871.06	1,944.14	3,902.88	1,359.42
21	1,817.17	1,972.62	2,050.32	4,171.92	1,428.67
22	1,909.50	2,074.18	2,156.50	4,440.96	1,497.92
23	2,001.83	2,175.74	2,262.68	4,710.00	1,567.17

### Miscellaneous Fees for 2016-17

- **Apprenticeship:** \$51 per credit; \$3.36 per clock hour.
- **Computer Lab:** A fee of \$25.10 per class is charged for certain classes identified in the course listing.
- **Facilities Maintenance:** The chart includes a fee of \$1.40 per credit, up to 18 credits (max. \$25.20), for facilities maintenance and College security.
- **Fitness Center Upgrade:** The chart includes a fee of \$2.50/credit, up to 10 credits (max. \$25), for fitness center upgrade.
- **Fitness Center Use Fee:** \$20 per student/per quarter.
- **GED Testing:** \$120.00 for first time on all four. Re-testing: \$30 per test.
- **High School Completion:** Students taking courses to earn a high school diploma are charged a per credit fee based upon residency status (\$51.46 per credit for residents and \$102.91 for non-residents). They also pay the technology fee, facilities fee, tutoring center fee, registration matriculation fee, Fitness Center usage fee and Fitness Center upgrade fee.

- **Lab:** Nonrefundable lab fees are collected for certain classes. Where applicable, this fee is shown with class listings in this schedule. Distance Education online courses require a Distance Ed fee of \$6.00/credit (max 10 credits) for each course. Distance Education Hybrid and Enhanced courses require a Distance Ed fee of \$3.00/credit (max 10 credits).
- **Matriculation Fee:** \$.50/credit, up to 10 credits (max \$5)
- **Resident Excess Credit:** Residents pay \$92.33 per credit above 18 credits.
- **Technology:** The chart includes a technology fee of \$3.75/credit, up to 12 credits (max. \$45). A photo ID card, which serves as your activities card, library card and computer lab card, is issued as part of this fee. The ID card is NOT issued quarterly; it is valid as long as you are at LCC.
- **Transcript:** \$10 fee for each official transcript.
- **Tutoring Center:** The chart includes a fee of \$.50/credit, up to 10 credits (max. \$5), to support the Tutoring Center.
- **Vocational Excess Credit:** Vocational students taking over 18 credits who meet certain requirements pay only \$7 per credit (residents); non-residents over 18 credits pay \$28.

# PAYING FOR COLLEGE

## Applying for Financial Aid

### Who is eligible?

To qualify for Financial Aid you must:

- Have a high school diploma or GED
- Be a U.S. citizen or eligible non-citizen
- Be registered with the Selective Service (if required)
- Visit [readysetgrad.org/wasfa](http://readysetgrad.org/wasfa) to apply for state aid if you are ineligible to apply for federal aid due to immigration status.

Other eligibility issues may be identified in the FAFSA process

### What financial aid is available?

Grants, loans, work study employment and scholarships are available to help cover college costs. Special aid programs are also offered for veterans, dislocated workers and first generation students.

### How to apply

Students apply for financial aid online through the LCC website. Computers are available for student use in the Admissions Center. Priority deadlines are set for each quarter to allow 3-6 weeks for an application to be processed.

To receive financial aid, a student **MUST** complete the FAFSA

1. Review the financial aid steps at [lowercolumbia.edu/finaid](http://lowercolumbia.edu/finaid). To complete the application, a student will need:
  - Social Security Number.
  - Income statements, tax or estimated income tax, bank statement. Visit FAFSA to learn more.
  - LCC's federal school code: 003782
2. Follow the instructions at [www.fafsa.gov](http://www.fafsa.gov) and complete the application.
3. Applicants should check their status at LCC's Financial Aid Portal and upload any requested documents. Do this at [lowercolumbia.edu/finaid](http://lowercolumbia.edu/finaid). The applicant will use their Social Security Number and birth date (mm/dd/yy) to log in the first time.

### How do I know if aid is approved? Get my money?

You will be notified of any financial aid awards through the Financial Aid Portal (see Step 3). Read your award notice carefully.

If you apply for Financial Aid and register for classes, we assume you are accepting your financial aid award. **If you meet the priority deadline and qualify, your Financial Aid check will be mailed to you before classes begin.**

If you decide not to attend, notify Financial Aid right away to cancel your award.

Review information about class changes or academic progress that might impact your award. Check with your advisor or at the Entry Center for support services to help you succeed in your classes.

### Financial Aid Hours

Monday/Tuesday/Thursday/Friday 8 a.m. - 5 p.m.

Wednesday 11 a.m. - 2 p.m.

## Scholarships

Lower Columbia College awards over \$250,000 in scholarships every year. The online process lets students apply for multiple LCC scholarships with a single application. There is no cost to apply.

Scholarships are based on varied criteria, including:

- Program of Study – Nursing, Art, Automotive, Chemistry, Education and more
- Merit – Based on GPA (usually 2.0 to 3.5) or demonstrated community service or leadership
- Need – Demonstrated financial need based on federal guidelines
- General – Qualify for general awards with broad, flexible criteria

These funds can be used to pay for tuition, student fees, books and supplies. Some awards will cover other expenses such as transportation or childcare.

Go to [lowercolumbia.edu/scholarships](http://lowercolumbia.edu/scholarships) for more information.

### Looking for your dream job?

The Career Center at Lower Columbia College provides career exploration and employment services to current students, alumni and community members in all stages of their academic and professional careers. This is a free service open to everyone. Visit the Career Center in the Admissions Center to identify your interests and talents, research potential careers, learn how to prepare for future employment, search for jobs, and receive help with resume writing and interview skills.

### Delayed Tuition Payment Options

Need more time to pay your tuition? Here are two options:

**Payment Plan:** For a \$30 fee you can enroll in a payment plan that charges your credit/debit card or bank account on a monthly basis. For information or to sign up, go to [lowercolumbia.edu/payment-options](http://lowercolumbia.edu/payment-options)

### Waiting for your Financial Aid funds?

Students who meet the priority deadline (August 8 for Fall Quarter 2017) by submitting their application and all required forms are likely to receive a check before the quarter starts and also receive an automatic hold on their classes until finance applies their financial aid to their tuition/fees.

Students who missed the priority deadline but complete their file on or before August 28, 2017 are eligible to receive an automatic administrative hold on their classes. However, their check will take 3-6 weeks to process from the date they completed their application and all required forms are submitted.



# UNIVERSITY TRANSFER

Students who begin a four-year degree at Lower Columbia College save on tuition costs as well as room and board if they live at home. Records show LCC students who transfer earn an average **3.18 GPA** for junior and senior studies at Washington public universities.

The Associate in Arts Direct Transfer Agreement (AA-DTA) provides a smooth transition to upper division studies in state public universities. The Washington 45 option allows LCC students to transfer after one year without losing any credits.

## Associate Degree Transfer Options

Students who complete the AA-DTA at LCC are generally admitted with junior standing by all public universities in the state, some in Oregon, and by most Washington private colleges.

Students graduate with virtually the same number of credits as students who started as freshmen at a university – an indicator of the smooth transition between two-year and four-year colleges.

Transfer students graduate in all subjects, including:

- **Business**
- **Healthcare**
- **STEM** (science, technology, engineering, and math)

The LCC Transfer Center hosts representatives from universities and colleges on campus each quarter to meet with students planning to transfer. The Transfer Club coordinates road trips to various colleges and universities.

For information about LCC transfer options and services for transfer students, visit [lowercolumbia.edu/transfer](http://lowercolumbia.edu/transfer)



## Washington 45

A student who completes courses selected from the categories listed below will be able to transfer and apply up to 45 quarter credits toward general education requirement(s) at any other public, and most private higher education institutions in the state.

### First Year Transfer List

- **Communications** (5 credits) – ENGL& 101, ENGL& 102
- **Quantitative and Symbolic Reasoning** (5 credits) – MATH& 107, MATH& 148 or MATH& 151
- **Humanities** (10 credits in two different subject areas or disciplines) – PHIL& 101, MUSC& 105, DRMA& 101, HIST& 116
- **Social Science** (10 credits in two different subject areas or disciplines) – PSYC& 100, SOC& 101, POLS& 101, POLS& 202, HIST& 117
- **Natural Sciences** (10 credits in two different subject areas or disciplines) – BIOL& 100,\* BIOL& 160\*, ASTR& 101\*, CHEM& 110\*, CHEM& 121\*, CHEM& 161\*, CHEM& 162\*, GEOL& 101\*.

*\*Natural Science lab courses.*

- **Additional 5 credits** in a different discipline can be taken from any category listed above.

*For transfer purposes, a student must have a minimum grade of C or better (2.0 or above) in each course completed from this list. Students who transfer Washington 45 credits must still meet the transfer institution's admission requirements and eventually satisfy all their general education requirements and their degree requirements in major, minor and professional programs.*

2016-17 Annual Tuition Fee* Comparison	
Lower Columbia College	\$4,150
Washington Public Universities	\$6,951-\$10,753

\* In-state rates



# WORKFORCE PREPARATION

LCC offers a variety of professional-technical programs designed to prepare students to enter the workforce. Research shows that **77% of LCC graduates are employed within nine months of graduation**, compared to just 73% for the state as a whole.

Professional-technical programs include certificates, associate degrees and even transfer degrees in some areas (such as Nursing) where bachelor's degrees are recommended for employment in the field. Many of LCC's programs feature lab and field opportunities that mirror the working world.

LCC offers programs in the following professional-technical areas:

Accounting	Diesel/Heavy Equipment Technology*	Medical Billing & Coding*
Administrative Services*	Early Childhood Education*	Medical Office Administration
Allied Health	Elementary Education	Medical Reception*
Automotive Technology	Health & Fitness	Networking
Basic Office Skills	Information Technology	Nursing
Business Management	Machine Trades*	Para-educator*
Chemical Dependency Studies	Manufacturing*	Retail Management*
Computer Numerical Control (CNC)*	Math Education	Secondary Education
Criminal Justice	Medical Assisting*	Web Development
		Welding*

**Learn more about LCC's Professional-Technical program options at [lowercolumbia.edu/work](http://lowercolumbia.edu/work)**

\*For more information about Gainful Employment programs at LCC, please visit [lowercolumbia.edu/programs/gainful-employment](http://lowercolumbia.edu/programs/gainful-employment)

## Notification of Title IV Student Complaint Process

The Higher Education Act (HEA) prohibits an institution of higher education from engaging in a "substantial misrepresentation of the nature of its educational program, its financial charges, or the employability of its graduates." 20 U.S.C. §1094(c)(3)(A). Further, each state must have "a process to review and appropriately act on complaints concerning the institution including enforcing applicable state laws." 34 C.F.R. § 600.9. The Washington State Board for Community and Technical Colleges (SBCTC) maintains a process to investigate complaints of this nature brought by community and technical college students in the state of Washington. For information, contact SBCTC Student Services, PO Box 42495, Olympia, WA 98504-2495, [ballinder@sbctc.edu](mailto:ballinder@sbctc.edu), 360-704-4315 or visit [sbctc.edu](http://sbctc.edu). To access the complaint form go to [sbctc.edu/college/s\\_resources.aspx#consumer](http://sbctc.edu/college/s_resources.aspx#consumer)



# COLLEGE & CAREER PREPARATION

Teamwork is a good approach to achieve success in sports, at work and in college. Lower Columbia College students who belong to study teams as part of a class or other organized program complete their courses and degrees more often and in less time than those who go it alone. The following programs of study are available this quarter for students who want to improve their chances of success at LCC.

## I-BEST Helps Students with a Fast Track to a Career & Student Success

Integrated Basic Education & Skills Training (I-BEST) is a proven program for student success. I-BEST students have double the certificate/degree completion rate, a result of hands-on training combined with twice the support and instruction to help students excel. I-BEST faculty and professional/technical faculty work together in the classroom in a team teaching partnership and I-BEST instructors are available for up to five hours or more each week to assist students in an academic support classroom where instruction is targeted to classroom studies. College credits earned can be applied toward two year Associate degrees in eight high demand career fields.

### Business Management

General Business prepares students for entry-level employment in a variety of business support positions. Students in Retail Management develop an understanding of the scope and requirements of a management position in a retail business. Credits for both can be applied toward the AAS in Business Management.

<b>ACCT 101</b>	<b>Introduction to Accounting Concepts</b>
<b>BUS 104</b>	<b>Business Math Applications</b>
<b>BUS 119</b>	<b>Business Communication</b>
<b>BUS 144</b>	<b>Management of Human Relations:DIV</b>

### Business Technology

This 4-quarter certificate program prepares graduates to work in an office setting. Credits can be applied toward two year AAS degrees.

<b>BTEC 104</b>	<b>Introduction to Business Technology</b>
<b>BTEC 111</b>	<b>Word Processing I</b>
<b>BTEC 131</b>	<b>Introduction to Spreadsheets: Excel</b> (previously CS 121)
<b>BTEC 148</b>	<b>Introduction to Outlook</b>
<b>IT 111</b>	<b>Introduction to Windows (previously CS 111)</b>

### Diesel/Heavy Equipment Technology

The Diesel/Heavy Equipment Technology program prepares students for careers in any industry that utilizes trucks, excavators, bulldozers, other heavy equipment, or industrial equipment utilizing diesel power and hydraulic devices. Graduates find work with truck and heavy equipment dealers, railroads, and marine operations using tug and fishing boats. Graduates may also work in industrial maintenance, auto, and RV repair.

<b>DHET 100</b>	<b>Essentials of Mechanics</b>
<b>DHET 141</b>	<b>Hydraulics I</b>
<b>DHET 142</b>	<b>Hydraulics II</b>

---

Program Specialist Jill Yates will help each student register for the classes they need: 360.442.2584 or [jjates@lowercolumbia.edu](mailto:jjates@lowercolumbia.edu)

---

### Early Childhood Education

This certificate and two-year degree program prepares graduates to work in preschool and childcare programs as early childhood education teachers and includes hands on training in the Home and Family Life Center.

<b>ECED 160</b>	<b>Curriculum Development</b>
<b>ECED 261</b>	<b>Practicum IV</b>
<b>EDUC 115</b>	<b>Child Development</b>
<b>EDUC 130</b>	<b>Guiding Behavior</b>

### Health Occupations/Nursing Assistant

LCC's Nursing Assistant program provides the content and experience to prepare students to take the State of Washington Nursing Assistant certification exam.

<b>AH 104</b>	<b>Healthcare Foundations</b>
<b>NURS 090</b>	<b>Nursing Assistant</b>

### Manufacturing Occupations

Learn the basic skills needed for entry-level jobs. This certificate provides a strong foundation in production, machining and welding processes providing access to many jobs in industries that use machine tools and fabrication processes to produce goods. This certificate includes courses that can be applied to more specialized degrees and certificates.

<b>MASP 111</b>	<b>Machine Shop I</b>
<b>MFG 115</b>	<b>Manufacturing Processes</b>
<b>TECH 078</b>	<b>Pre-College Math I</b>
<b>TECH 079</b>	<b>Pre-College Math II</b>

### Medical Assistant

Students develop knowledge and skills necessary for employment in clinical and administrative support areas of medical clinics.

<b>BTEC 171</b>	<b>Medical Reception Procedures</b>
<b>CS 110</b>	<b>Microcomputer Applications</b>
<b>MATH 105</b>	<b>Math for Medical</b>
<b>MEDA 101</b>	<b>Medical Vocabulary II</b>
<b>MEDA 120</b>	<b>Survey of Human A &amp; P</b>
<b>MEDA 122</b>	<b>Law &amp; Ethics in the Medical Office</b>
<b>MEDA 161</b>	<b>Examining Room Procedures I</b>

### Welding

<b>WELD 151</b>	<b>Introduction to Oxy-Acetylene</b>
-----------------	--------------------------------------

# FALL 2017 LEARNING COMMUNITIES



## Food for Thought Nutritional Psychology

**Monday-Thursday 9 a.m.-11:10 a.m.**

**Instructors: Betty Hayes, Elena Ross**

- Do food additives and dyes impact mental health?
- Does food marketing play a role in nutritional choices?
- Why is obesity a growing problem?
- Why do we crave sugar, fat and salt?

You may earn 5 credits of Natural Science and 5 credits of Social Science. All are transferable. Talk with your advisor about how these two courses fit into your degree plan.

Sign up for:

**NUTR& 101, Nutrition, 5 credits, item # 4680**

*and*

**PSYC& 100, General Psychology, 5 credits, item # 5885**

Come join us to **examine** what impact food has on the mind and body. **Explore** how the brain influences what, when, how much and where we eat. **Identify** your own eating habits in relation to mental and physical health, and **learn** to recognize your “eating personality” so you can use that awareness to make deliberate and mindful nutritional choices.

## Does Your Class Use Free Or Inexpensive Textbooks?

Does your class use FREE or INEXPENSIVE textbooks? Alternative Educational Resources (AER) are print or digital, free or inexpensive alternatives to commercial textbooks. AER include course materials that **cost our students less than \$30** to use, and include used textbooks and other physical and digital resources. Look for this symbol in your class schedule: ©

### COURSES USING AER — FALL 2017

ART 155	Beginning Digital Photography – 1025, 1030	CMST& 220	Introduction to Public Speaking – 5140, 5145, 5150, 5160	IT 294	Career Success – 2162
BIOL& 160	General Biology – 1180, 1185, 1190	CMST& 236	Small Group Communication – 5165, 5170	MATH& 107	Math in Society – 4000
BIOL& 241	Anatomy & Physiology 1 – 1235, 1240	CS 170	Programming Fundamentals – 2150	MUSC 100	Fundamentals of Music – 4165
BIOL& 242	Anatomy & Physiology 2 – 1270	DRMA& 101	Introduction to Theatre – 2335	MUSC 145	Beginning Voice – 4235
BIOL& 260	Microbiology – 1285, 1290	DRMA 106	Introduction to Acting – 2300	NUTR& 101	Nutrition – 4675, 4680, 4685, 4690, 4695, 4700, 4705
BUS 100	Foundations of Business Success – 1598	DRMA 206	Acting I – 2325	NUTR 299	Nutrition – 4670
BUS& 101	Introduction to Business – 1600, 1610	ECED& 100	Child Care Basics – 2390	POLS& 101	Introduction Political Science – 4940
BUS 119	Business Communications – 1500	ECON 105	Introduction to Economics – 2430, 2435	PSYC& 100	General Psychology – 4980, 4985, 4990, 5005, 5885
BUS 144	Management Human Relations:DIV – 1515, 1520	ECON& 201	Micro Economics – 2440	SOC& 101	Introduction to Sociology:DIV – 5050, 5055
BTEC 149	Internet Fundamentals – 1395	ENGL 098	College-Ready English I – 2520, 2525, 2530, 2540, 2545, 2550, 2555, 2565		
BTEC 150	Introduction to Google Aps – 1400	ENGL 099	College-Ready English II – 2595, 2615		
BTEC 155	Website Management – 1405	ENGL& 101	English Composition I – 2680, 2690, 2695, 2710, 2720, 2735, 2745, 2750, 2760, 2770, 2785		
CHEM& 100	Preparatory Chemistry – 1680	HUM 106	Community Conversations – 3405		
CHEM& 110	Chemical Concepts w/lab – 1690				
CHEM& 121	Introduction to Chemistry – 1695, 1710				



“Open Textbooks” is licensed under CC BY 3.0

# ONLINE LEARNING @ LCC

Online learning at Lower Columbia College offers flexibility for those with work, family and other responsibilities to complete college courses and even a degree without a regular commute to campus.

**Online** – Students complete all course work via the Internet.

**Hybrid** – Courses blend classroom sessions with online participation and learning. For example: students go online, read lessons, take a practice quiz; then come to a face-to-face class and practice what they learned online.

**Enhanced** – Course is fully face-to-face, but has an additional, required online component. (i.e. submitting assignments or discussion boards)

The online learning process requires the same commitment as a traditional course. Staying up with the class and completing all work on time is vital. Once a learner gets behind, it is very difficult to catch up.

The majority of LCC online and hybrid courses are facilitated through the learning management system, Canvas.

**Note:** Some online classes require that students use a proctoring service for their online exams. This can be done at LCC, other colleges/approved sites, or with Proctor U. Many test proctoring locations charge a fee for this service, which students are responsible for paying. Students should work with their instructors if they have any questions about test proctoring requirements.

## Need help with Canvas?

If your class listing shows this symbol ▽ you will be using Canvas – LCC's online learning management system.

### Schedule a free one-on-one help session!

*Learn how to:*

- *Change your profile settings in Canvas*
- *Navigate your course*
- *Complete assignments, quizzes, and more!*

To schedule an appointment or for more information, stop by the Learning Commons, or call eLearning 360.442.2520 or Tutoring 360.442.2572

## LCC ONLINE CLASSES – FALL 2017

ACCT& 201	Principles of Accounting I	CMST& 210	Interpersonal Communication	*MATH 078/079	Pre-College Math I
AH 100	Blood Borne Pathogens and Infection Control	CMST& 220	Introduction to Public Speaking	*MATH 088/089	Pre-College Math II
ART 206	Art of the Americas	CMST& 230	Small Group Communication	*MATH 098/099	Pre-College Math III
ART 226	History of Western Art	COLL 074	Math Success	MATH 210	Elements of Statistics
ART& 100	Art Appreciation:DIV	COLL 101	First Year Seminar I	MATH& 107	Math In Society
BIOL& 160	General Biology	COLL 102	First Year Seminar II	MEDA 205	Certification Review for Medical Assistants
BIOL& 241	Human A & P 1	CS 110	Microcomputer Applications	MUSC 119	American Music:DIV
BIOL& 242	Human A & P 2	ECED 186	Growth & Socialization	MUSC& 105	Music Appreciation
BIOL& 260	Microbiology	ECON 105	Introduction to Economics	NUTR& 101	Nutrition
BTEC 131	Introduction to Spreadsheets	EDUC 295	Emodality Using Canvas	OCEA& 101	Introduction to Oceanography
BTEC 181	Medical Terminology I	EDUC& 136	School Age Care	PHED 152	Personalized Fitness
BTEC 182	Medical Terminology II	ENGL 098	College-Ready English I	PHED 252	Personalized Fitness
BUS 144	Management/Human Relations:DIV	ENGL 099	College-Ready English II	PSYC& 100	General Psychology
BUS 150	Customer Service/Management	ENGL 270	Literature for Children	PSYC& 200	Lifespan Psychology
BUS 159	Principles of Retailing	ENGL& 101	English Composition I	SOC& 101	Introduction to Sociology:DIV
BUS 206	Statistical Methods	ENGL& 102	Composition II	*SPAN& 121	Spanish I:DIV
BUS 240	Principles of Supervision	ERSI 105	Earth Systems	*SPAN& 122	Spanish II:DIV
BUS& 101	Introduction to Business	GEOL& 208	Geology of the Pacific NW	*SPAN& 123	Spanish III:DIV
BUS& 201	Business Law	HIST& 136	US History 1	*SPAN& 221	Spanish IV
CHEM& 110	Chemical Concepts w/lab	HIST& 137	US History 2	*SPAN& 222	Spanish V
CJ& 110	Criminal Law	HLTH 106	Health and Wellness	*SPAN& 223	Spanish VI
		HUM 210	Myth and Rites:DIV		
		HUM 255	Ethics/Policy Healthcare		
		MATH 050	Review Math-Whole Number		

*\*These courses do not use Canvas*



# Start Next Quarter



## See If You Qualify for Special Funding for College

Special funding, in addition to traditional financial aid, is available to help pay college expenses for individuals seeking job training at Lower Columbia College. Current students, and others who want to train for a new job, can easily see if they might qualify through a new online tool.

### Start Next Quarter

Take the 10-minute survey at [www.startnextquarter.org](http://www.startnextquarter.org) to find out if you might qualify for special funding programs that help cover college expenses, including textbooks, transportation and childcare. If you pre-qualify, you can sign-up for an information session where you'll learn about available funding programs, determine your eligibility and submit an application. You'll also learn about:

- Available career training programs
- How to prepare for the placement assessments
- How to apply for federal financial aid (FAFSA)
- How to keep your unemployment or basic food benefits while in training

For help completing the survey, call the Workforce Services office, 360.442.2330, or stop by the Career Center for one-on-one support.

### Worker Retraining 360.442.2334

Worker Retraining is a state-funded program that provides job-related training and employment services to dislocated and unemployed workers to help them gain additional training in their field or to get started on a new career. You may be eligible to receive additional funding to help pay for retraining tuition, books and fees or "jump-start" funding while waiting for financial aid approval. If you are currently receiving unemployment benefits, Worker Retraining staff will work with you to navigate the employment service programs available to the unemployed.

### Opportunity Grant 360.442.2338

Unemployed or underemployed adults seeking a certificate or degree in a high demand career field, may be eligible for help to pay for college expenses under the Opportunity Grant Program. The grant provides individualized support services, along with funding for tuition and fees, books, and/or tools for up to 45 credits.

### Basic Food, Employment & Training (BFET) 360.442.2332

In a partnership with Department of Social and Health Services (DSHS), Lower Columbia College offers opportunities for vocational education and career development to low income students who qualify to receive, or are currently receiving, federally-issued basic food benefits. While BFET does not provide tuition assistance, you may qualify for other assistance such as child care and food benefits. If you are currently receiving federally issued basic food benefits, BFET will allow you to continue to receive those benefits while attending school. As a benefits recipient, you will be required to participate in monthly career exploration activities with BFET staff.

### For more information about workforce funding programs and the services available, please contact:

#### Basic Food, Employment & Training (BFET)

Katie Sully, Educational Planner  
[ksully@lowercolumbia.edu](mailto:ksully@lowercolumbia.edu)

Steve Boyer, Program Coordinator  
[sboyer@lowercolumbia.edu](mailto:sboyer@lowercolumbia.edu)

#### Opportunity Grant

Darren Schwegler, Educational Planner  
[dschwegler@lowercolumbia.edu](mailto:dschwegler@lowercolumbia.edu)

#### Worker Retraining

Crystal Heitz, Educational Planner  
[cheitz@lowercolumbia.edu](mailto:cheitz@lowercolumbia.edu)



## Diversity Classes

To earn a degree at LCC, you must pass a 5-credit Cultural Diversity class. These courses meet the requirement.

ANTH& 100	Survey of Anthropology	ENGL 245	Contemporary Literature
ANTH 109	American Cultural Diversity	ENGL 246	Rainbow Readers: LGBTQ Literature
ANTH& 206	Cultural Anthropology		
ART& 100	Art Appreciation	ENGL 280	Multicultural Literature
ART 206	Arts of the Americas	ENVS 150	Environment and Society
ART 207	Arts of the World	HIST& 126	World Civilization I
ART 208	Arts of the Northwest	HIST& 127	World Civilization II
ART 228	History of Western Art	HIST& 128	World Civilization III
ASL& 123	American Sign Language III	HIST 205	History of East Asia
BTEC 165	Cultural Awareness for Care Professionals	HIST& 215	Women in U.S. History
		HUM 104	Ethics and Cultural Values
BUS 144	Management of Human Relations	HUM 164	Cultural Journeys
		HUM 210	Myths and Rites
CHIN& 121	Chinese I	MUSC 117	Music Cultures of the World
CHIN& 122	Chinese II	MUSC 119	American Music
CHIN& 123	Chinese III	MUSC 209	The Blues Culture
CMST 250	Intercultural Communication (Was SPCH 109)	SOC& 101	Introduction to Sociology (Includes WAOL's SOC& 101)
CMST 240	Rhetorical Criticism and Popular Culture (was SPCH 209)	SOC 210	Human Sexuality
EDUC& 205	Introduction to Education w/Field Experience	SOC 225	Race and Ethnicity
		SPAN& 121	Spanish I
ENGL 140	Introduction to Women Writers	SPAN& 122	Spanish II
		SPAN& 123	Spanish III

## Fall 2017 Final Exam Schedule (December 5-7)

Use this chart to determine your final exam time. Schedules are online at [lowercolumbia.edu/classes/finals.php](http://lowercolumbia.edu/classes/finals.php)

Class begins between	On these days	Your final exam time will be	On this date
7:00 a.m. - 8:20 a.m.	M, MWF, MW, W, Daily	8:00 a.m. - 10:00 a.m.	December 5
7:00 a.m. - 8:20 a.m.	MTWTh, MTWF, MWThF, TTh	8:00 a.m. - 10:00 a.m.	December 6
9:00 a.m. - 9:50 a.m.	TTh, MTWTh	8:00 a.m. - 10:00 a.m.	December 7
9:00 a.m. - 9:50 a.m.	MWF, MW, Daily	10:10 a.m. - 12:10 p.m.	December 5
9:55 a.m. - 10:50 a.m.	MW, MWF, Daily	10:10 a.m. - 12:10 p.m.	December 6
11:00 a.m. - 11:55 a.m.	MWThF, TTh, MTWTh	10:10 a.m. - 12:10 p.m.	December 7
11:00 a.m. - 11:55 a.m.	MW, MWF, Daily	12:20 p.m. - 2:20 p.m.	December 5
12:00 p.m. - 12:55 p.m.	MW, Daily, MWThF	12:20 p.m. - 2:20 p.m.	December 6
1:00 p.m. - 2:00 p.m.	MWF, MW, W, MTWTh, Daily, MTWF	12:20 p.m. - 2:20 p.m.	December 7
1:00 p.m. - 2:30 p.m.	TTh, Th, T	2:30 p.m. - 4:30 p.m.	December 5
2:40 p.m. - 4:00 p.m.	MWF, MW, M, W	2:30 p.m. - 4:30 p.m.	December 6
2:40 p.m. - 4:00 p.m.	T, TTh	2:30 p.m. - 4:30 p.m.	December 7
Classes not listed above or classes that conflict with other finals		Please contact your instructor for your final exam time	
5:00 p.m.-10:00 p.m.	All Days	During Class	Talk to Instructor

Evening classes meeting once a week will take their final exam at the regular class time during finals week. Evening classes meeting more than once a week will take the final exam at the regular class time on whichever day during finals week the class agrees upon.

Students enrolled in online courses (DE section) are to contact their instructor for final exam information.

Students are not required to take final exams for more than two classes on a single day. If such a conflict arises, students are to contact their instructor to discuss alternative options. If no solution is determined after the initial meeting with the instructor, students may then petition the appropriate division dean. Arrangements must be made by the end of the 8th week of instruction. For assistance please contact the Office of Instruction by calling 360.442.2550. *Exam priorities shall be based on class meeting day order first, then meeting time.*

Final exams will be administered on the day designated on the final exam schedule. If a deviation from the scheduled day is desired, faculty must seek approval from the appropriate division dean. Time changes, unanimously approved by the class, are acceptable.

For any classes that conflict with other final exams please talk to your instructor for more information.

# CLASS LISTINGS

## These initials or symbols on the course listing mean:

**A** = No more than three PHED activity credits may be taken as electives towards a DTA degree.

**D** = Course meets Diversity requirement.

**H** = Course meets distribution credit in Humanities.

**SS** = Course meets distribution credit in Social Science.

**NS** = Course meets distribution credit in Natural Science.

**NSL** = Course meets distribution credits in Natural Science as a lab course.

**P** = Course meets distribution credits as a performance based course.

**&** = Course is part of the Washington Community Colleges' Common Course Numbering system.

**▽ & DE** = Course uses the CANVAS learning management system. All courses with this symbol have a fee. All DE sections have a fee of \$6.00 per credit, maximum of \$60.00.

All other **▽** sections have a fee of \$3.00 per credit, maximum of \$30.00. CANVAS orientation information is on page 12.

**Ⓢ** = Course uses Open or Alternative Educational Resources/Textbooks cost less than \$30.00

**ⓧ** = Course is clustered with other class sections that meet at the same time, in the same classroom.

## Accounting

Unless otherwise noted, a computer lab fee is charged for all ACCT courses.

### ACCT 101 INTRODUCTION TO ACCOUNTING CONCEPTS

▽ 0830 A 5 MWF 11:10a.m.-12:35p.m. AAR 103 STANLEY J

### ACCT 241 INTRODUCTION TO QUICKBOOKS

▽ 0845 A 5 TTh 1:20p.m.-3:20p.m. AAR 108 CUMMINGS D

### ACCT 244 INDIVIDUAL INCOME TAXATION

0850 A 5 TTh 9:00a.m.-11:00a.m. AAR 102 RUA D

### ACCT& 201 PRINCIPLES OF ACCOUNTING I

▽ 0865 A 5 MW 9:00a.m.-10:25a.m. AAR 103 STANLEY J

▽ 0870 DE 5 ARR ARR ARR STANLEY J

Online class. No computer lab fee.

## Course # Course Name

▽ Item# Sec.# Cred.# Days Time Place Instructor

## Allied Health

### AH 100 BLOOD BORNE PATHOGENS AND INFECTION CONTROL

▽ 0880 DE 1 ARR ARR ARR SOLADEY V  
Online class.

## American Sign Language

### ASL& 121 AM SIGN LANGUAGE I

1130 A 5 TTh 9:00a.m.-11:00a.m. HSB 106 PIETSCH D  
1135 B 5 TTh 11:10a.m.-1:10p.m. HSB 106 PIETSCH D  
1140 C 5 TTh 1:30p.m.-3:30p.m. HSB 106 PIETSCH D

## Anthropology

### ANTH& 100 SURVEY OF ANTHROPOLOGY:DIV

▽ 0965 A 5 TTh 1:00p.m.-3:00p.m. AAR 102 BATEY T

### ANTH& 205 BIOLOGICAL ANTHROPOLOGY

▽ 0970 A 5 MWF 11:10a.m.-12:35p.m. MAN 146 BATEY T

## Art

### ART& 100 ART APPRECIATION:DIV

▽ 1115 A 5 T 1:20p.m.-3:20p.m. MAN 119 COOPER R  
Hybrid class; partially online.

▽ 1120 DE 5 ARR ARR ARR COOPER R  
Online class.

### ART 101 BEGINNING DRAWING

0975 A 3 MW 9:00a.m.-11:30a.m. MAN 109 KOHLMEIER M  
0980 B 3 MW 2:00p.m.-4:30p.m. MAN 109 STAFF

### ART 106 BASIC DESIGN

1000 A 5 TTh 10:00a.m.-12:00p.m. MAN 109 KOHLMEIER M

### ART 107 BASIC DESIGN I

1005 A 5 TTh 2:20p.m.-4:20p.m. MAN 109 KOHLMEIER M

### ART 111 BEGINNING PAINTING

▽ 1010 A 3 TTh 9:00a.m.-12:00p.m. MAN 103 COOPER R  
ⓧ Course is clustered with other class sections that meet at the same time, in the same classroom.

### ART 112 INTERMEDIATE PAINTING

▽ 1015 A 3 TTh 9:00a.m.-12:00p.m. MAN 103 COOPER R  
ⓧ Course is clustered with other class sections that meet at the same time, in the same classroom.

### ART 113 ADVANCED PAINTING

▽ 1020 A 3 TTh 9:00a.m.-12:00p.m. MAN 103 COOPER R  
ⓧ Course is clustered with other class sections that meet at the same time, in the same classroom.

## Course # Course Name

Item#	Sec.#	Cred.#	Days	Time	Place	Instructor
-------	-------	--------	------	------	-------	------------

<b>ART 155</b>	<b>BEGINNING DIGITAL PHOTOGRAPHY</b>					<b>H,P</b>
1025 A	5	TTh	12:30p.m.-4:00p.m.	MAN 118	VANDERMATEN	
Lab Fee: \$39.20 © Uses Alternative Educational Resources.						

<b>ART 162</b>	<b>PHOTOSHOP FOR WEB &amp; PRINT</b>					
1035 A	3	TTh	10:00a.m.-11:40a.m.	MAN 118	VANDERMATEN	
Basic computer skills required.						
Lab Fee: \$26.10						

<b>ART 226</b>	<b>HISTORY OF WESTERN ART</b>					<b>H</b>
1045 DE	5	ARR	ARR		ARR	FREY T
Online class.						

<b>ART 241</b>	<b>BEGINNING CERAMIC ART</b>					<b>H,P</b>
1050 A	3	MW	1:00p.m.-3:50p.m.	MAN 104	WOODS T	
Lab Fee: \$22.70 ⊗ Course is clustered with other class sections that meet at the same time, in the same classroom.						

<b>ART 242</b>	<b>INTERMEDIATE CERAMIC ART</b>					<b>H,P</b>
1060 A	3	MW	1:00p.m.-3:50p.m.	MAN 104	WOODS T	
Lab Fee: \$30.80 ⊗ Course is clustered with other class sections that meet at the same time, in the same classroom.						

<b>ART 243</b>	<b>ADVANCED CERAMIC ART</b>					<b>H,P</b>
1070 A	3	MW	1:00p.m.-3:50p.m.	MAN 104	WOODS T	
Lab Fee: \$30.80 ⊗ Course is clustered with other class sections that meet at the same time, in the same classroom.						

<b>ART 290</b>	<b>ART STUDIO LAB-CERAMICS</b>					
1090 MM	1-3	ARR	ARR		ARR	WOODS T
Instructor permission required to enroll.						
Lab Fee: \$30.80						

## Buying Your Books

The LCC Bookstore makes it easy for you to get your textbooks. Here's how:

- Stop by the Bookstore (in the Student Center) with your schedule and the staff will find your books for you. Some used books are available for most courses so, if possible, shop early.
- Buy books online at [lowercolumbia.edu/bookstore](http://lowercolumbia.edu/bookstore) and pick them up in-store or have them shipped to your home. Textbooks will be available online beginning August 7.

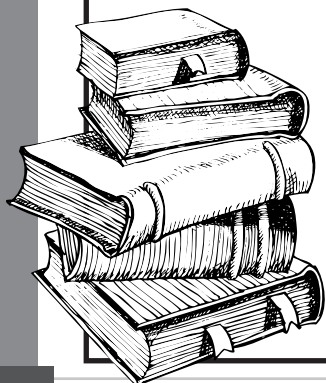
### Bookstore Hours

Mon-Thurs, 7:30 a.m.-4:30 p.m.  
Friday, 7:30 a.m.-2 p.m.

*Extended hours opening week of the quarter, check Bookstore website*

### Summer & Fall Book Buyback

*Check Bookstore website for dates and times.*



<b>ART 295</b>	<b>ART LAB-PHOTOGRAPHY</b>					
1095 MM	1-3	ARR	ARR		ARR	VANDERMATEN
Instructor permission required to enroll.						
Lab Fee: \$39.20						

<b>ART 297</b>	<b>PHOTOSHOP INDEPENDENT STUDY</b>					
1100 MM	1-3	ARR	ARR		ARR	VANDERMATEN
Instructor permission required to enroll.						

<b>ART 299</b>	<b>INDEPENDENT STUDY</b>					
1105 MM	1-3	ARR	ARR		ARR	COOPER R
Instructor permission required to enroll.						
Lab Fee: \$21.70						
1110 MM2	1-3	ARR	ARR		ARR	KOHLMEIER M
Instructor permission required to enroll.						
Lab Fee: \$21.70						

### EVENING CLASSES

<b>ART 101</b>	<b>BEGINNING DRAWING</b>					<b>H,P</b>
0985 N	3	TTh	6:00p.m.-8:50p.m.	MAN 109	KOHLMEIER M	
⊗ Course is clustered with other class sections that meet at the same time, in the same classroom.						

<b>ART 102</b>	<b>INTERMEDIATE DRAWING</b>					<b>H,P</b>
0990 N	3	TTh	6:00p.m.-8:50p.m.	MAN 109	KOHLMEIER M	
Lab Fee: \$6.50 ⊗ Course is clustered with other class sections that meet at the same time, in the same classroom.						

<b>ART 103</b>	<b>ADVANCED DRAWING</b>					<b>H,P</b>
0995 N	3	TTh	6:00p.m.-8:50p.m.	MAN 109	KOHLMEIER M	
⊗ Course is clustered with other class sections that meet at the same time, in the same classroom.						

<b>ART 155</b>	<b>BEGINNING DIGITAL PHOTO</b>					<b>H,P</b>
1030 N	5	TTh	5:00p.m.-8:30p.m.	MAN 118	VANDERMATEN	
Lab Fee: \$39.20 © Uses Alternative Educational Resources.						

<b>ART 241</b>	<b>BEGINNING CERAMIC ART</b>					<b>H,P</b>
1055 N	3	MW	6:00p.m.-8:50p.m.	MAN 104	WOODS T	
Lab Fee: \$22.70 ⊗ Course is clustered with other class sections that meet at the same time, in the same classroom.						

<b>ART 242</b>	<b>INTERMEDIATE CERAMIC ART</b>					<b>H,P</b>
1065 N	3	MW	6:00p.m.-8:50p.m.	MAN 104	WOODS T	
Lab Fee: \$30.80 ⊗ Course is clustered with other class sections that meet at the same time, in the same classroom.						

<b>ART 243</b>	<b>ADVANCED CERAMIC ART</b>					<b>H,P</b>
1075 N	3	MW	6:00p.m.-8:50p.m.	MAN 104	WOODS T	
Lab Fee: \$30.80 ⊗ Course is clustered with other class sections that meet at the same time, in the same classroom.						

## Astronomy

### EVENING CLASSES

<b>ASTR&amp; 101</b>	<b>INTRODUCTION TO ASTRONOMY</b>					<b>NSL</b>
1145 N	5	T	5:15p.m.-6:45p.m.	HSB 137	VASQUEZ J	
Lab included.						
Hybrid class; partially online.						



## Course # Course Name

Item#	Sec.#	Cred.#	Days	Time	Place	Instructor
-------	-------	--------	------	------	-------	------------

## Automotive Technology

There is a fee of \$13.00 per student per quarter for all AMTC classes.

**AMTC 101 ELECTRICAL SYSTEMS I**

0925 A	5		MTWTh	7:30a.m.-12:00p.m.	DTV 232	KILE C
--------	---	--	-------	--------------------	---------	--------

**AMTC 102 ELECTRICAL SYSTEMS II**

0930 A	10		MTWTh	7:30a.m.-12:00p.m.	DTV 232	KILE C
--------	----	--	-------	--------------------	---------	--------

**AMTC 216 AUTOMATIC TRANSMISSION**

0935 A	8		MTWTh	7:30a.m.-12:00p.m.	DTV 233	ROESKE G
--------	---	--	-------	--------------------	---------	----------

**AMTC 217 POWERTRAINS**

0940 A	6		MTWTh	7:30a.m.-12:00p.m.	DTV 233	ROESKE G
--------	---	--	-------	--------------------	---------	----------

**AMTC 299 INDEPENDENT STUDY**

0955 MM1	1- 5	ARR	ARR		ARR	ROESKE G
----------	------	-----	-----	--	-----	----------

Instructor permission required to enroll.

0960 MM2	1- 5	ARR	ARR		ARR	KILE C
----------	------	-----	-----	--	-----	--------

Instructor permission required to enroll.

## Biology

**BIOL& 100 SURVEY OF BIOLOGY**

NSL

1165 A	5		MW	9:00a.m.-10:15a.m.	HSB 123	KEPLER C
--------	---	--	----	--------------------	---------	----------

Students must also enroll in BIOL& 100 LA.

Lab Fee: \$20.70

**BIOL& 100 SURVEY OF BIOLOGY—LAB**

1170 LA	0		MW	11:10a.m.-1:00p.m.	HSB 304	KEPLER C
---------	---	--	----	--------------------	---------	----------

**BIOL& 160 GENERAL BIOLOGY**

NSL

⊗ Course is clustered with other class sections that meet at the same time, in the same classroom.

1180 A	5		TTh	9:00a.m.-11:00a.m.	HSB 123	KEPLER C
--------	---	--	-----	--------------------	---------	----------

Students must also enroll in one of the lab sections, BIOL& 160 LA, LB, LC, or LD. Students will not be allowed to enroll in one of the DE lab sections.

Lab Fee: \$11.10 ☺ Uses Alternative Educational Resources.

1185 B	5		MW	11:00a.m.-1:00p.m.	HSB 105	MYERS L
--------	---	--	----	--------------------	---------	---------

Students must also enroll in one of the lab sections, BIOL& 160 LA, LB, LC, or LD. Students will not be allowed to enroll in one of the DE lab sections.

Lab Fee: \$11.10 ☺ Uses Alternative Educational Resources.

1190 DE	5	ARR	ARR		ARR	MYERS L
---------	---	-----	-----	--	-----	---------

Students must also enroll in one of the lab sections, BIOL& 160 DEA or DEB. Students should be prepared to purchase online lab software called Late Nite Labs. The cost for access is \$29.95.

Online class. ☺ Uses Alternative Educational Resources.

**BIOL& 160 GENERAL BIOLOGY—LAB**

⊗ Course is clustered with other class sections that meet at the same time, in the same classroom.

1205 LA	0		Th	11:10a.m.-1:00p.m.	HSB 304	KEPLER C
---------	---	--	----	--------------------	---------	----------

1210 LB	0		F	9:00a.m.-10:50a.m.	HSB 304	MYERS L
---------	---	--	---	--------------------	---------	---------

1215 LC	0		F	11:10a.m.-1:00p.m.	HSB 304	MYERS L
---------	---	--	---	--------------------	---------	---------

1220 LD	0		F	1:10p.m.-3:00p.m.	HSB 304	MYERS L
---------	---	--	---	-------------------	---------	---------

1195 DEA	0	ARR	ARR		ARR	MYERS L
----------	---	-----	-----	--	-----	---------

Online class.

1200 DEB	0	ARR	ARR		ARR	MYERS L
----------	---	-----	-----	--	-----	---------

Online class.

**BIOL& 211 MAJORS BIOLOGY CELLULAR**

NSL

1225 A	5		TTh	1:20p.m.-2:35p.m.	HSB 107	LAPIERRE L
--------	---	--	-----	-------------------	---------	------------

			TTh	2:50p.m.-4:40p.m.	HSB 304	LAPIERRE L
--	--	--	-----	-------------------	---------	------------

Lab included. Lab Fee: \$15.00

**BIOL& 241 HUMAN ANATOMY AND PHYSIOLOGY 1**

NSL

1235 A	5		MWF	11:10a.m.-12:25p.m.	HSB 101	MEYERS R
--------	---	--	-----	---------------------	---------	----------

Students must also enroll in one of the lab sections - BIOL& 241 LA, LB, or LC.

Lab Fee: \$14.30 ☺ Uses Alternative Educational Resources.

1240 DE	5	ARR	ARR		ARR	MEYERS R
---------	---	-----	-----	--	-----	----------

No textbook required for this course. Students must also enroll in one of the lab sections, BIOL& 241 DEA or DEB.

Online class. ☺ Uses Alternative Educational Resources.

**BIOL& 241 HUMAN ANATOMY AND PHYSIOLOGY 1—LAB**

1255 LA	0		T	8:00a.m.-9:50a.m.	HSB 306	MYERS L
---------	---	--	---	-------------------	---------	---------

1260 LB	0		M	1:00p.m.-2:50p.m.	HSB 306	MYERS L
---------	---	--	---	-------------------	---------	---------

1265 LC	0		T	10:00a.m.-11:50a.m.	HSB 306	MYERS L
---------	---	--	---	---------------------	---------	---------

1245 DEA	0	ARR	ARR		ARR	MEYERS R
----------	---	-----	-----	--	-----	----------

Online class.

1250 DEB	0	ARR	ARR		ARR	MEYERS R
----------	---	-----	-----	--	-----	----------

Online class.

**BIOL& 242 HUMAN ANATOMY AND PHYSIOLOGY 2**

NSL

1270 DE	5	ARR	ARR		ARR	MEYERS R
---------	---	-----	-----	--	-----	----------

Prerequisite: BIOL& 241 with a C or better. Prerequisite waiver may be granted with appropriate documentation to the instructor. No textbook is required. Students must also enroll in one of the lab sections, DEA or DEB. ☺ Uses Alternative Educational Resources.

Online class.

**BIOL& 242 HUMAN ANATOMY AND PHYSIOLOGY 2—LAB**

1275 DEA	0	ARR	ARR		ARR	MEYERS R
----------	---	-----	-----	--	-----	----------

Online class.

1280 DEB	0	ARR	ARR		ARR	MEYERS R
----------	---	-----	-----	--	-----	----------

Online class.

**BIOL& 260 MICROBIOLOGY**

NSL

1285 A	5		TTh	1:20p.m.-2:35p.m.	HSB 123	FULLER K
--------	---	--	-----	-------------------	---------	----------

Students must also enroll in one of the lab sections, BIOL& 260 LA or LB.

Lab Fee: \$25.90 ☺ Uses Alternative Educational Resources.

1290 DE	5	ARR	ARR		ARR	FULLER K
---------	---	-----	-----	--	-----	----------

Students must also enroll in one of the lab sections, BIOL& 260 DEA or DEB.

Lab Fee: \$25.90

Online class. ☺ Uses Alternative Educational Resources.

**BIOL& 260 MICROBIOLOGY—LAB**

1305 LA	0		TTh	8:00a.m.-9:50a.m.	HSB 302	FULLER K
---------	---	--	-----	-------------------	---------	----------

1310 LB	0		TTh	10:00a.m.-11:50a.m.	HSB 302	FULLER K
---------	---	--	-----	---------------------	---------	----------

1295 DEA	0	ARR	ARR		ARR	FULLER K
----------	---	-----	-----	--	-----	----------

Online class.

1300 DEB	0	ARR	ARR		ARR	FULLER K
----------	---	-----	-----	--	-----	----------

Online class.

**BIOL 299 INDEPENDENT STUDY**

1160 MM	1-3	ARR	ARR		ARR	MEYERS R
---------	-----	-----	-----	--	-----	----------

## Course # Course Name

Item#	Sec.#	Cred.#	Days	Time	Place	Instructor
-------	-------	--------	------	------	-------	------------

## Business Administration

**BUS 100 FOUNDATIONS OF BUSINESS SUCCESS SS**

1598 A	5	TTh	9:00a.m.-11:00a.m.	AAR 105	GAITHER M
--------	---	-----	--------------------	---------	-----------

Hybrid class; partially online. ☉ Uses Alternative Educational Resources.

**BUS& 101 INTRODUCTION TO BUSINESS SS**

1600 A	5	T	11:10a.m.-1:10p.m.	AAR 108	CUMMINGS D
--------	---	---	--------------------	---------	------------

Hybrid class; partially online. ☉ Uses Alternative Educational Resources.

1610 DE	5	ARR	ARR	ARR	STUART M
---------	---	-----	-----	-----	----------

Online class. ☉ Uses Alternative Educational Resources.

**BUS 104 BUSINESS MATH APPLICATIONS**

1490 A	5	MW	11:10a.m.-12:35p.m.	VOC 116	CUMMINGS D
--------	---	----	---------------------	---------	------------

Hybrid class; partially online.

**BUS 119 BUSINESS COMMUNICATIONS**

1500 A	5	W	1:20p.m.-2:45p.m.	AAR 102	ALLWINE T
--------	---	---	-------------------	---------	-----------

Hybrid class; partially online. ☉ Uses Alternative Educational Resources.

**BUS 144 MANAGEMENT OF HUMAN RELATIONS:DIV D,SS**

1515 A	5	Th	9:00a.m.-11:00a.m.	VOC 116	ALLWINE T
--------	---	----	--------------------	---------	-----------

Hybrid class; partially online. ☉ Uses Alternative Educational Resources.

1520 DE	5	ARR	ARR	ARR	ALLWINE T
---------	---	-----	-----	-----	-----------

Online class. ☉ Uses Alternative Educational Resources.

**BUS 150 CUSTOMER SERVICE/MANAGEMENT**

1535 A	5	T	11:10a.m.-1:10p.m.	AAR 103	ALLWINE T
--------	---	---	--------------------	---------	-----------

Hybrid class; partially online.

**BUS 159 PRINCIPLES OF RETAILING**

1550 DE	5	ARR	ARR	ARR	STUART M
---------	---	-----	-----	-----	----------

Online class.

**BUS& 201 BUSINESS LAW SS**

1620 A	5	TTh	1:20p.m.-3:20p.m.	MAN 145	QUIRK A
--------	---	-----	-------------------	---------	---------

1625 DE	5	ARR	ARR	ARR	QUIRK A
---------	---	-----	-----	-----	---------

Online class.

**BUS 206 STATISTICAL METHODS NS**

1555 A	5	DAILY	8:00a.m.-8:50a.m.	HSB 107	SWEE R
--------	---	-------	-------------------	---------	--------

☒ Course is cross-listed as BUS 206 and Math 210.

1560 B	5	TTh	1:20p.m.-3:20p.m.	MAN 233	SAMUELS S
--------	---	-----	-------------------	---------	-----------

Online homework and electronic textbook provided by Pearson Education. Any technical problems may be resolved by contacting Technical Support for MyLabsPlus at 1.888.883.1299 or helpdesk@lowercolumbia.mylabsplus.com

☒ Course is cross-listed as BUS 206 and Math 210.

1565 DE	5	ARR	ARR	ARR	MALOZZI J
---------	---	-----	-----	-----	-----------

☒ Course is cross-listed as BUS 206 and Math 210.

1570 DE1	5	ARR	ARR	ARR	MALOZZI J
----------	---	-----	-----	-----	-----------

☒ Course is cross-listed as BUS 206 and Math 210.

1572 DE2	5	ARR	ARR	ARR	HERBERT M
----------	---	-----	-----	-----	-----------

☒ Course is cross-listed as BUS 206 and Math 210.

**BUS 240 PRINCIPLES OF SUPERVISION**

1580 DE	5	ARR	ARR	ARR	STUART M
---------	---	-----	-----	-----	----------

Online class.

**BUS 294 CAREER SUCCESS**

1595 A	2	W	12:10p.m.-1:00p.m.	HSB 107	HOMME S
--------	---	---	--------------------	---------	---------

Hybrid class; partially online.

☒ Course is clustered with other class sections that meet at the same time, in the same classroom.

## EVENING CLASSES

**BUS 206 STATISTICAL METHODS NS**

1575 N	5	TTh	5:15p.m.-7:20p.m.	MAN 146	RHODE C
--------	---	-----	-------------------	---------	---------

Online homework and electronic textbook provided by Pearson Education. Any technical problems may be resolved by contacting Technical Support for MyLabsPlus at 1.888.883.1299 or helpdesk@lowercolumbia.mylabsplus.com

☒ Course is cross-listed as BUS 206 and Math 210.

## Business Technology

If you are enrolled in "P" section, please sign up for individual class orientations in the Business Technology lab located in Applied Arts 110. You must attend an orientation for your class during the first week of the quarter. A syllabus and progress chart will be provided to you at that time. The BTEC Lab hours are Monday-Friday 9 a.m. to 3:45 p.m., testing is Monday-Thursday 9 a.m. to 2 p.m. and Friday 9 a.m. to 12 p.m. Students must have photo ID to use the computer labs. Unless otherwise noted, a computer lab fee is charged for BTEC Lab courses. Please contact the lab at 360.442.2710 if you have questions.

**BTEC 100 COMPUTER KEYBOARDING**

1325 P	1-3	ARR	ARR	AAR 110	GAITHER M
--------	-----	-----	-----	---------	-----------

This course is graded on a pass/fail basis only. An orientation is required for this course. Sign up for orientation in AAR 109, Lab 5 or call 360.442.2710. Allow one hour for this orientation.

**BTEC 104 INTRODUCTION TO BUSINESS TECHNOLOGY**

1330 A	5	MW	9:00a.m.-11:00a.m.	AAR 105	GAITHER M
--------	---	----	--------------------	---------	-----------

1335 B	5	MW	1:00p.m.-3:00p.m.	AAR 109E	GAITHER M
--------	---	----	-------------------	----------	-----------

**BTEC 105 KEYBOARDING SPEED/ACCURACY BUILDING**

1350 P	1-4	ARR	ARR	AAR 110	GAITHER M
--------	-----	-----	-----	---------	-----------

This course is graded on a Pass/Fail basis only.

**BTEC 111 WORD PROCESSING I**

1355 A	5	TTh	11:00a.m.-1:00p.m.	AAR 105	GAITHER M
--------	---	-----	--------------------	---------	-----------

**BTEC 130 ELECTRONIC CALCULATORS**

1360 P	1-2	ARR	ARR	AAR 110	LEMMONS N
--------	-----	-----	-----	---------	-----------

No computer lab fee.

**BTEC 131 INTRODUCTION TO SPREADSHEETS**

1361 A	5	MW	9:00a.m.-10:25a.m.	AAR 109E	LEMMONS N
--------	---	----	--------------------	----------	-----------

Hybrid class; partially online.

1362 DE	5	ARR	ARR	ARR	LEMMONS N
---------	---	-----	-----	-----	-----------

Online class. No computer lab fee.

**BTEC 141 INTRODUCTORY DATABASE APPLICATIONS**

1363 A	5	TTh	11:10a.m.-12:35p.m.	AAR 109E	LEMMONS N
--------	---	-----	---------------------	----------	-----------

Hybrid class; partially online.

**BTEC 144 ONENOTE FUNDAMENTALS**

1365 P	1	ARR	ARR	AAR 109	LEMMONS N
--------	---	-----	-----	---------	-----------

**BTEC 145 INTRODUCTION TO MS WORD**

1370 P	1-5	ARR	ARR	AAR 110	LEMMONS N
--------	-----	-----	-----	---------	-----------

## Course # Course Name

▽ Item#	Sec.#	Cred.#	Days	Time	Place	Instructor
---------	-------	--------	------	------	-------	------------

**BTEC 146 POWERPOINT FUNDAMENTALS**

▽ 1375 P	1-2	ARR	ARR		AAR 110	LEMMONS N
----------	-----	-----	-----	--	---------	-----------

**BTEC 147 INTRODUCTION TO DESKTOP PUBLISHING**

▽ 1380 P	1-3	ARR	ARR		AAR 110	GAITHER M
----------	-----	-----	-----	--	---------	-----------

**BTEC 148 INTRODUCTION TO OUTLOOK**

▽ 1382 A	2	T		10:00a.m.-10:50a.m.	AAR 108	HOMME S
----------	---	---	--	---------------------	---------	---------

**BTEC 149 INTERNET FUNDAMENTALS**

▽ 1395 P	1	ARR	ARR		AAR 110	GAITHER M
----------	---	-----	-----	--	---------	-----------

Ⓢ Uses Alternative Educational Resources.

**BTEC 150 INTRODUCTION TO GOOGLE APS**

▽ 1400 P	1-3	ARR	ARR		AAR 110	GAITHER M
----------	-----	-----	-----	--	---------	-----------

Ⓢ Uses Alternative Educational Resources.

**BTEC 155 WEBSITE MANAGEMENT**

▽ 1405 P	3	ARR	ARR		AAR 110	GAITHER M
----------	---	-----	-----	--	---------	-----------

Ⓢ Uses Alternative Educational Resources.

**BTEC 156 INTRODUCTION TO VISIO**

▽ 1407 P	2	ARR	ARR		AAR 110	LEMMONS N
----------	---	-----	-----	--	---------	-----------

**BTEC 157 INTRODUCTION TO MS PROJECT**

▽ 1410 P	2	ARR	ARR		AAR 110	LEMMONS N
----------	---	-----	-----	--	---------	-----------

**BTEC 164 LEGAL ASPECTS OF THE MEDICAL OFFICE**

▽ 1425 P	1-2	ARR	ARR		AAR 110	LEMMONS N
----------	-----	-----	-----	--	---------	-----------

No computer lab fee.

**BTEC 171 MEDICAL RECEPTION PROCEDURES**

▽ 1430 A	3	TTh		1:00p.m.-2:15p.m.	HSB 244	MILLUS N
▽ 1435 B	3	TTh		2:30p.m.-3:45p.m.	HSB 244	MILLUS N

**BTEC 181 MEDICAL TERMINOLOGY I**

▽ 1455 DE	3	ARR	ARR		ARR	RUIZ D
-----------	---	-----	-----	--	-----	--------

Online class. No computer lab fee.

**BTEC 182 MEDICAL TERMINOLOGY II**

▽ 1465 DE	3	ARR	ARR		ARR	RUIZ D
-----------	---	-----	-----	--	-----	--------

Online class. No computer lab fee.

**BTEC 294 CAREER SUCCESS**

▽ 1480 A	2	W		12:10p.m.-1:00p.m.	HSB 107	HOMME S
----------	---	---	--	--------------------	---------	---------

Hybrid class; partially online.  
⊗ Course is clustered with other class sections that meet at the same time, in the same classroom.

**EVENING CLASSES****BTEC 161 INTRODUCTION TO ICD-10 CODING**

▽ 1415 N	5	MW		5:30p.m.-7:30p.m.	AAR 103	REIN J
----------	---	----	--	-------------------	---------	--------

Hybrid class; partially online.

**Chemical Dependency****EVENING CLASSES**

<b>CDS 101</b>	<b>INTRODUCTION TO ADDICTIONS &amp; CHEMICAL DEPENDENCY</b>	<b>SS</b>
1630 N	5 MW	6:00p.m.-8:00p.m. MAN 234 SCHULZ P

<b>CDS 108</b>	<b>COMMUNITY AND SCHOOL-BASED PREVENTION/INTERVENTION</b>	
1635 N	4 F	5:15p.m.-8:35p.m. AAR 106 MILLER S

Class meets October 6 & 7, October 20 & 21, November 3 & 4, and November 17 & 18. Friday 5:30p.m.-8:00p.m. and Saturday 9:00a.m.-4:00p.m.

<b>CDS 113</b>	<b>TREATMENT PRINCIPLES AND CHEMICAL DEPENDENCY</b>	
1640 N	3 Th	5:30p.m.-8:00p.m. AAR 106 WALTZ M

<b>CDS 202</b>	<b>CHEMICAL DEPENDENCY COUNSELING W/DIVERSE POPULATIONS</b>	
1645 N	3 T	5:30p.m.-8:00p.m. MAN 233 CALIMAN J

<b>CDS 215</b>	<b>GROUP COUNSELING</b>	
1650 N	3 W	5:30p.m.-8:00p.m. MAN 147 MILLER S

Prerequisite: CDS 101 and 113 with a grade of C or better.

**Chemistry****CHEM& 100 PREPARATORY CHEMISTRY**

▽ 1680 A	5	MWF		11:10a.m.-12:35p.m.	HSB 123	HERBELIN A
----------	---	-----	--	---------------------	---------	------------

Ⓢ Uses Alternative Educational Resources.

**CHEM& 110 CHEMICAL CONCEPTS W/LAB**

▽ 1690 DE	5	ARR	ARR		ARR	NSL PECORE J
-----------	---	-----	-----	--	-----	-----------------

Exams must be proctored for this course using either the LCC Testing Center or online option ProctorU. Contact the instructor for more information.  
Lab included. Lab Fee: \$50.00  
Online class. Ⓢ Uses Alternative Educational Resources.

**CHEM& 121 INTRODUCTION TO CHEMISTRY**

1695 A	5	MWF		10:00a.m.-11:00a.m.	HSB 101	NSL WOLFER A
--------	---	-----	--	---------------------	---------	-----------------

Students must also enroll in CHEM& 121 LA.  
Lab Fee: \$14.40 Ⓢ Uses Alternative Educational Resources.

**CHEM& 121 INTRODUCTION TO CHEMISTRY—LAB**

1700 LA	0	Th		9:00a.m.-11:50a.m.	HSB 332	WOLFER A
---------	---	----	--	--------------------	---------	----------

**CHEM& 161 GENERAL CHEMISTRY I**

1715 A	5	MWF		8:55a.m.-9:55a.m.	HSB 101	NSL WOLFER A
--------	---	-----	--	-------------------	---------	-----------------

Students must also enroll in one of the lab sections, CHEM& 161 LA, LB, or LC.  
Lab Fee: \$25.90

**CHEM& 161 GENERAL CHEMISTRY I—LAB**

1720 LA	0	T		9:00a.m.-11:50a.m.	HSB 332	WOLFER A
1725 LB	0	T		1:20p.m.-4:10p.m.	HSB 332	WOLFER A
1730 LC	0	W		1:20p.m.-4:10p.m.	HSB 332	KEPLER C

**CHEM& 261 ORGANIC CHEMISTRY I**

▽ 1735 A	5	MWF		9:00a.m.-9:50a.m.	HSB 104	NSL HERBELIN A
----------	---	-----	--	-------------------	---------	-------------------

Students must also enroll in one of the lab sections, CHEM& 261 LA or LB.  
Lab Fee: \$25.90

**CHEM& 261 ORGANIC CHEMISTRY I—LAB**

1740 LA	0	MW		2:20p.m.-4:10p.m.	HSB 329	HERBELIN A
1745 LB	0	TTh		9:00a.m.-10:50a.m.	HSB 329	HERBELIN A

## Course # Course Name

Item#	Sec.#	Cred.#	Days	Time	Place	Instructor
-------	-------	--------	------	------	-------	------------

## EVENING CLASSES

## CHEM&amp; 100 PREPARATORY CHEMISTRY

1685 N	5	MW	5:00p.m.-7:10p.m.	HSB 123	GERICK J
--------	---	----	-------------------	---------	----------

## CHEM&amp; 121 INTRODUCTION TO CHEMISTRY

NSL

1710 N	5	M	5:30p.m.-8:15p.m.	HSB 105	KEPLER C
		W	5:30p.m.-8:15p.m.	HSB 332	KEPLER C

Lab included. Lab Fee: \$14.40 © Uses Alternative Educational Resources.

## College Success

## COLL 074 MATH SUCCESS

1998 DE	2	ARR	ARR	ARR	BABBICK L
---------	---	-----	-----	-----	-----------

## COLL 101 FIRST YEAR SEMINAR I

2000 A	2	MW	8:00a.m.-8:50a.m.	AAR 102	BYKER B
2010 B	2	TTh	9:00a.m.-9:50a.m.	PSC 102	LEACH M
2015 C	2	TTh	9:00a.m.-9:50a.m.	MAN 145	STAFF
2020 DE	2	ARR	ARR	ARR	MYERS L

Online class.

2030 E	2	TTh	10:00a.m.-10:50a.m.	AAR 103	LEACH M
2035 F	2	MW	11:10a.m.-12:00p.m.	VOC 112	BYKER B
2040 G	2	TTh	11:10a.m.-12:00p.m.	VOC 116	LEACH M
2045 HB	2	T	1:20p.m.-2:10p.m.	AAR 106	STAFF

Hybrid class; partially online.

2050 I	2	MW	1:20p.m.-2:10p.m.	VOC 111	STAFF
--------	---	----	-------------------	---------	-------

## COLL 102 FIRST YEAR SEMINAR II

2070 B	2	MW	11:00a.m.-11:50a.m.	AAR 102	AKINS-FIELDS
2075 C	2	MW	1:00p.m.-1:50p.m.	MAN 233	RISTER M
2080 DE	2	ARR	ARR	ARR	BYKER B

Online class.

## Communication Studies

## CMST 126 COMPETITIVE PUBLIC SPEAKING

5175 A	2	MW	3:30p.m.-5:30p.m.	RCA 141	BREHM A
--------	---	----	-------------------	---------	---------

⊗ Course is clustered with other class sections that meet at the same time, in the same classroom.

## CMST 136 INTERCOLLEGIATE DEBATE

5180 A	2	MW	3:30p.m.-5:30p.m.	RCA 141	BREHM A
--------	---	----	-------------------	---------	---------

⊗ Course is clustered with other class sections that meet at the same time, in the same classroom.

## CMST&amp; 210 INTERPERSONAL COMMUNICATION

H

5130 A	5	TTh	9:00a.m.-11:00a.m.	RCA 139	NEILL S
5132 DE	5	ARR	ARR	ARR	NEILL S

Online class.

## CMST&amp; 220 PUBLIC SPEAKING

H

5135 A	5	TTh	10:00a.m.-12:00p.m.	HSB 105	BREHM A
--------	---	-----	---------------------	---------	---------

5140 B	5	MW	11:10a.m.-1:10p.m.	RCA 220	NEILL S
--------	---	----	--------------------	---------	---------

© Uses Alternative Educational Resources.

5145 C	5	MW	9:00a.m.-11:00a.m.	RCA 139	NEILL S
--------	---	----	--------------------	---------	---------

© Uses Alternative Educational Resources.

5150 DE	5	ARR	ARR	ARR	GORDON S
---------	---	-----	-----	-----	----------

This is an online course. You will be required to record your speeches in front of an audience you provide. Please contact the instructor for more information.

Online class. © Uses Alternative Educational Resources.

5160 DE1	5	ARR	ARR	ARR	GORDON S
----------	---	-----	-----	-----	----------

This is an online course. You will be required to record your speeches in front of an audience you provide. Please contact the instructor for more information.

Online class. © Uses Alternative Educational Resources.

5155 F	5	TTh	1:20p.m.-3:20p.m.	RCA 220	BREHM A
--------	---	-----	-------------------	---------	---------

## CMST 226 COMPETITIVE PUBLIC SPEAKING

5185 A	2	MW	3:30p.m.-5:30p.m.	RCA 141	BREHM A
--------	---	----	-------------------	---------	---------

⊗ Course is clustered with other class sections that meet at the same time, in the same classroom.

## CMST&amp; 230 SMALL GROUP COMMUNICATION

H

5165 A	5	MW	1:20p.m.-3:20p.m.	RCA 220	SCHULTZ L
--------	---	----	-------------------	---------	-----------

© Uses Alternative Educational Resources.

5170 DE	5	ARR	ARR	ARR	GORDON S
---------	---	-----	-----	-----	----------

Online class. © Uses Alternative Educational Resources.

## CMST 236 INTERCOLLEGIATE DEBATE

5190 A	2	MW	3:30p.m.-5:30p.m.	RCA 141	BREHM A
--------	---	----	-------------------	---------	---------

⊗ Course is clustered with other class sections that meet at the same time, in the same classroom.

## Computer Science

Unless noted otherwise, a computer lab fee is charged for all Computer Science classes.

## CS 110 INTRODUCTION TO MICROCOMPUTER APPLICATIONS

2090 A	3	MWF	9:00a.m.-9:50a.m.	AAR 110C	ROSI D
--------	---	-----	-------------------	----------	--------

2095 B	3	MWF	11:10a.m.-12:00p.m.	AAR 105	ROSI D
--------	---	-----	---------------------	---------	--------

2100 C	3	TTh	11:10a.m.-12:25p.m.	AAR 110C	HOMME S
--------	---	-----	---------------------	----------	---------

2105 DE	3	ARR	ARR	ARR	ROSI D
---------	---	-----	-----	-----	--------

Online class.

## CS 170 PROGRAMMING FUNDAMENTALS

NS

2150 A	5	MWF	1:20p.m.-3:00p.m.	AAR 105	DERKACHT D
--------	---	-----	-------------------	---------	------------

© Uses Alternative Educational Resources.

## CS 270 DATA STRUCTURES I

NS

2165 A	5	MWF	3:10p.m.-4:35p.m.	AAR 105	DERKACHT D
--------	---	-----	-------------------	---------	------------

## Host an International Student!

If you have a spare room and an open heart, you can provide a home away from home for an international student in our community. As a host, you'll provide room and board and friendship for a student studying at LCC. You'll learn about different cultures while sharing a slice of your American life. Host families come in all shapes and sizes and receive a monthly stipend. For more information, visit [lowercolumbia.edu/international](http://lowercolumbia.edu/international) or email [international@lowercolumbia.edu](mailto:international@lowercolumbia.edu)





## Cooperative Education

LCC's Cooperative Education Program enables students to earn college credit through supervised, work-based learning experience.

This program integrates theories, concepts and methods studied in the classroom with practical skills gained in the workplace. Students may earn one credit for every 33 hours of approved work experience. There is a limit of 1-5 credits per quarter, depending upon specific degree requirements.

To enroll in a Cooperative Education program, students must have prior permission from an instructor in the appropriate program and the Cooperative Ed Coordinator. For information, contact Career Services at 360.442.2330 or jsmith@lowercolumbia.edu, or stop by the Career Center, Admissions Building, Room 120.

Cooperative Education 288 students must attend a mandatory orientation either 3-4 p.m. or 5:30-6:30 p.m. on Thursday, August 24. Orientations will be held in the Admissions Building, Room 120.

Cooperative Ed 288 students also must enroll in a 1-credit Cooperative Education 289 Seminar. The seminar focuses on work-related topics that complement the student's work-based learning experience. The seminar meets weekly on Thursdays from 11 a.m.-12 p.m. in the Science Building, Room 102. A \$14.30 lab fee will be charged for all 288 classes.

ACCT 288	0855	CMST 288	5195	LIBR 288	3545
ACCT 289	0860	CMST 289	5200	LIBR 289	3550
AH 288	0915	ECED 288	2380	MASP 288	3650
AH 289	0920	ECED 289	2385	MASP 289	3655
ART 288	1080	EDUC 288	2465	MATH 288	3975
ART 289	1085	EDUC 289	2470	MATH 289	3980
AMTC 288	0945	ENGR 288	2835	MEDA 288	4120
AMTC 289	0950	ENGR 289	2840	MEDA 289	4125
BUS 288	1585	ENVS 288	2870	MUSC 288	4480
BUS 289	1590	ENVS 289	2875	MUSC 289	4485
BTEC 288	1470	HLTH 288	3130	PSYC 288	4970
BTEC 289	1475	HLTH 289	3135	PSYC 289	4975
CDS 288	1655	HDEV 288	3040	WELD 288	5580
CDS 289	1660	HDEV 289	3045	WELD 289	5585
CHEM 288	1670	ICP 288	3435		
CHEM 289	1675	ICP 289	3440		
CJ 288	1750	IT 288	2170		
CJ 289	1755	IT 289	2175		

## Criminal Justice

**CJ& 101 INTRODUCTION TO CRIMINAL JUSTICE** **SS**  
1760 A 5 TTh 1:20p.m.-3:20p.m. HSB 105 HAMILTON A

**CJ& 110 CRIMINAL LAW** **SS**  
1765 A 5 TTh 10:00a.m.-12:00p.m. PSC 102 QUIRK A

⊗ Course is clustered with other class sections that meet at the same time, in the same classroom.

▽ 1770 DE 5 ARR ARR ARR QUIRK A  
Online class.

⊗ Course is clustered with other class sections that meet at the same time, in the same classroom.

## Diesel/Heavy Equipment Technology

There is a fee of \$13.00 per student per quarter for all DHET classes.

**DHET 100 ESSENTIALS OF MECHANICS**  
2190 A 5 MT 9:30a.m.-12:00p.m. DTV 123 ECKLUND K

**DHET 141 HYDRAULICS I**  
2200 A 4 MT 7:50a.m.-9:30a.m. DTV 106A ECKLUND K  
⊗ Course is clustered with other class sections that meet at the same time, in the same classroom.

**DHET 142 HYDRAULICS II**  
2220 A 6 WTh 8:00a.m.-11:30a.m. DTV 123 ECKLUND K

**DHET 215 HEAVY DUTY ENGINE PERFORMANCE**  
2230 A 15 MTWTh 12:00p.m.-4:30p.m. DTV 106A DILLINGER J  
Prerequisite: DHET 102 or instructor permission.

**DHET 216 AUTO/DIESEL TUNE UP AND PERFORMANCE**  
2235 A 5 MTWTh 12:00p.m.-4:30p.m. DTV 106A DILLINGER J  
Prerequisite: DHET 102 or instructor permission.

**DHET 240 FLUID POWER/ELECTRIC THEORY AND DESIGN** **NS**  
2340 A 5 MT 2:00p.m.-3:40p.m. DTV 106A ECKLUND K

**DHET 299 INDEPENDENT STUDY**  
2250 MM1 1-2 ARR ARR ARR DILLINGER J  
2255 MM2 1-2 ARR ARR ARR ECKLUND K

## Drama

**DRMA& 101 INTRODUCTION TO THEATRE** **H**  
2335 A 5 MWF 11:10a.m.-12:35p.m. RCA 139 RICHARD B  
⊗ Uses Alternative Educational Resources.

**DRMA 106 INTRODUCTION TO ACTING** **H,P**  
2300 A 5 MWF 1:00p.m.-2:30p.m. RCA 131 RICHARD B  
⊗ Course is clustered with other class sections that meet at the same time, in the same classroom. ⊗ Uses Alternative Educational Resources.

**DRMA 116 STAGE CRAFTS I**  
2305 A 5 TTh 1:00p.m.-3:30p.m. RCA 148 COCHRAN R  
⊗ Course is clustered with other class sections that meet at the same time, in the same classroom.

**DRMA 117 STAGE CRAFTS II**  
2310 A 5 TTh 1:00p.m.-3:30p.m. RCA 148 COCHRAN R  
⊗ Course is clustered with other class sections that meet at the same time, in the same classroom.

**DRMA 118 STAGE CRAFTS III**  
2315 A 5 TTh 1:00p.m.-3:30p.m. RCA 148 COCHRAN R  
⊗ Course is clustered with other class sections that meet at the same time, in the same classroom.

**DRMA 206 ACTING I**  
2325 A 5 MWF 1:00p.m.-2:30p.m. RCA 131 RICHARD B  
⊗ Course is clustered with other class sections that meet at the same time, in the same classroom. ⊗ Uses Alternative Educational Resources.

Course # Course Name

▽ Item# Sec.# Cred.# Days Time Place Instructor

EVENING CLASSES

**DRMA 196 REHEARSAL & PERFORMANCE I**

2320 N 1-5 ARR 4:00p.m.-7:30p.m. RCA 131 RICHARD B

Enrollment restricted to students in current production.

⊗ Course is clustered with other class sections that meet at the same time, in the same classroom.

**DRMA 296 REHEARSAL & PERFORMANCE IV**

2330 N 1-5 ARR 4:00p.m.-7:30p.m. RCA 131 RICHARD B

Enrollment restricted to students in current production.

⊗ Course is clustered with other class sections that meet at the same time, in the same classroom.

## Early Childhood Education

**ECED& 100 CHILD CARE BASICS**

▽ 2390 A 3 F 10:00a.m.-1:00p.m. SCI 102 AKINS-FIELDS  
Hybrid class; partially online. ☉ Uses Alternative Educational Resources.

**ECED& 107 HEALTH/SAFETY/NUTRITION**

▽ 2395 A 5 ARR ARR ARR ZBAEREN J  
Class will meet Saturday, October 28, 8:00a.m.-4:00p.m. in DTV 202 with Brittney Johnson for 1st Aid, CPR, and BB Pathogens.  
Hybrid class; partly online.

**ECED& 120 PRACTICUM-NURTURING RELATIONSHIPS**

▽ 2405 A 2 M 12:00p.m.-1:00p.m. SCI 102 AKINS-FIELDS

**ECED& 160 CURRICULUM DEVELOPMENT**

▽ 2420 A 5 Th 3:00p.m.-5:30p.m. SCI 102 WILLIAMSON A  
Hybrid class; partially online.

**ECED 186 GROWTH & SOCIALIZATION**

▽ 2355 DE 3 ARR ARR ARR BOURSAW S  
For class info, please contact the instructor at sboursaw@lowercolumbia.edu  
Online class.

**ECED& 190 OBSERVATION/ASSESSMENT**

2360 A 3 T 11:00a.m.-12:30p.m. SCI 102 ZBAEREN J

**ECED 261 PRACTICUM IV/PRINCIPLES**

▽ 2370 A 3 W 2:00p.m.-3:00p.m. SCI 102 WILLIAMSON A  
Prerequisite ENGL& 101, all ECED 100-level courses and EDUC& 114 with a grade of C or better.

## Earth Science

**ERSI 104 INTRODUCTION TO EARTH SCIENCE W/LAB**

2880 A 5 MWF 11:10a.m.-12:00p.m. HSB 139 SALISBURY M  
TTh 12:00p.m.-1:50p.m. HSB 139 SALISBURY M

Lab included. Lab Fee: \$14.40

Field trips may be required.

**ERSI 105 EARTH SYSTEMS**

▽ 2885 DE 5 ARR ARR ARR BARD E  
Online class. Lab included.

## Economics

**ECON 105 INTRODUCTION TO ECONOMICS**

SS

▽ 2430 A 5 MTWTh 11:10a.m.-12:00p.m. MAN 233 FRANZ J  
Hybrid class; partially online. ☉ Uses Alternative Educational Resources.

▽ 2435 DE 5 ARR ARR ARR FRANZ J  
Online class. ☉ Uses Alternative Educational Resources.

**ECON& 201 MICRO ECONOMICS**

SS

▽ 2440 A 5 TTh 9:00a.m.-10:25a.m. HSB 101 FRANZ J  
Hybrid class; partially online. ☉ Uses Alternative Educational Resources.

## Education

**EDUC& 115 CHILD DEVELOPMENT**

▽ 2485 A 5 Th 12:00p.m.-2:00p.m. SCI 102 ZBAEREN J

**EDUC& 130 GUIDING BEHAVIOR**

▽ 2490 A 3 T 1:00p.m.-2:30p.m. SCI 102 ZBAEREN J  
Hybrid class; partially online.

**EDUC& 136 SCHOOL AGE CARE**

▽ 2500 DE 3 ARR ARR ARR AKINS-FIELDS  
Online class.

**EDUC 191 INTRODUCTION TO TUTORING**

▽ 2450 A 1 ARR ARR ARR WILLIAMSON A

**EDUC& 205 INTRODUCTION TO EDUCATION W/FIELD EXPERIENCE:DIV D**

▽ 2505 A 5 MW 4:00p.m.-5:30p.m. SCI 102 WILLIAMSON A  
This class includes participation in actual elementary classrooms in addition to class meeting times.

EVENING CLASSES

**EDUC 215 CLASSROOM MANAGEMENT**

▽ 2460 N 3 T 4:00p.m.-7:00p.m. SCI 102 GRIBSKOV D  
Hybrid class; partially online.

## Engineering

Unless otherwise noted, a computer lab fee is charged for all Engineering classes.

**ENGR& 121 ENGINEERING GRAPHICS I**

2845 A 1-3 MW 2:00p.m.-4:15p.m. VOC 113 SKREEN R  
⊗ Course is clustered with other class sections that meet at the same time, in the same classroom.

**ENGR& 122 ENGINEERING GRAPHICS II**

2850 A 1-3 MW 2:00p.m.-4:15p.m. VOC 113 SKREEN R  
Prerequisite ENGR& 121 or instructor permission.  
⊗ Course is clustered with other class sections that meet at the same time, in the same classroom.

**ENGR& 123 ENGINEERING GRAPHICS III**

2855 A 1-3 MW 2:00p.m.-4:15p.m. VOC 113 SKREEN R  
Prerequisite ENGR& 121 or instructor permission.  
⊗ Course is clustered with other class sections that meet at the same time, in the same classroom.

## Course # Course Name

Item#	Sec.#	Cred.#	Days	Time	Place	Instructor
-------	-------	--------	------	------	-------	------------

**ENGR& 214 STATICS**

2860 A 5 MWF 7:30a.m.-8:50a.m. HSB 135 MORRISON D  
Prerequisite: MATH& 151 and either PHYS 251 or ENGR 106.

**EVENING CLASSES****ENGR 205 DESIGN OF LOGIC CIRCUITS**

2830 N 5 MW 4:45p.m.-7:45p.m. AAR 105 DERKACHT D  
Prerequisite: Math& 141 or Instructor permission.

## English

**ENGL 087 COLLEGE READY INDUSTRIAL COMMUNICATION**

▽ 2508 A 5 TTh 1:20p.m.-3:20p.m. AAR 123 HAYNES J

**ENGL 096 READING WORKSHOP I**

2510 A 2 ARR ARR ARR LEACH M

⊗ Course is clustered with other class sections that meet at the same time, in the same classroom.

**ENGL 097 READING WORKSHOP II**

2515 A 2 ARR ARR ARR LEACH M

⊗ Course is clustered with other class sections that meet at the same time, in the same classroom.

**ENGL 098 COLLEGE-READY ENGLISH I**

▽ 2520 A 5 DAILY 10:00a.m.-10:50a.m. AAR 129 HAYNES J

⊗ Course is clustered with other class sections that meet at the same time, in the same classroom. ☉ Uses Alternative Educational Resources.

▽ 2525 B 5 DAILY 8:00a.m.-8:50a.m. HSB 106 LEAVENS A

⊗ Course is clustered with other class sections that meet at the same time, in the same classroom. ☉ Uses Alternative Educational Resources.

▽ 2530 C 5 DAILY 9:00a.m.-9:50a.m. AAR 129 HAYNES J

⊗ Course is clustered with other class sections that meet at the same time, in the same classroom. ☉ Uses Alternative Educational Resources.

▽ 2540 DE 5 ARR ARR ARR CONNOLLY B

Online class. ☉ Uses Alternative Educational Resources.

▽ 2545 F 5 MWF 11:10a.m.-12:35p.m. VOC 111 CONNOLLY B

⊗ Course is clustered with other class sections that meet at the same time, in the same classroom. ☉ Uses Alternative Educational Resources.

▽ 2550 G 5 DAILY 11:10a.m.-12:00p.m. AAR 129 HAYNES J

⊗ Course is clustered with other class sections that meet at the same time, in the same classroom. ☉ Uses Alternative Educational Resources.

▽ 2565 L 5 MWF 9:00a.m.-10:25a.m. VOC 111 CONNOLLY B

⊗ Course is clustered with other class sections that meet at the same time, in the same classroom. ☉ Uses Alternative Educational Resources.

**ENGL 099 COLLEGE-READY ENGLISH II**

▽ 2595 DE 5 ARR ARR ARR CONNOLLY B

Prerequisite: ENGL 098 with a grade of C or better.

Online class. ☉ Uses Alternative Educational Resources.

▽ 2615 H 5 DAILY 1:00p.m.-1:50p.m. VOC 116 LEAVENS A

Prerequisite: ENGL 098 with a grade of C or better.

⊗ Course is clustered with other class sections that meet at the same time, in the same classroom. ☉ Uses Alternative Educational Resources.

**ENGL& 101 ENGLISH COMPOSITION I**

▽ 2680 A 5 DAILY 8:00a.m.-8:50a.m. MAN 147 STRICKLAND J

☉ Uses Alternative Educational Resources.

▽ 2695 C 5 TTh 9:00a.m.-11:00a.m. AAR 128 DIGERLANDO N

☉ Uses Alternative Educational Resources.

▽ 2705 DE 5 ARR ARR ARR MCCARTHY D

Online class.

▽ 2710 DE1 5 ARR ARR ARR HEGMANN E

Online class. ☉ Uses Alternative Educational Resources.

▽ 2690 DE2 5 ARR ARR ARR HEGMANN E

Online class. ☉ Uses Alternative Educational Resources.

▽ 2715 E 5 TTh 1:20p.m.-3:20p.m. MAN 147 BAUER H

▽ 2720 F 5 DAILY 10:00a.m.-10:50a.m. DTV 214 RISTER M

☉ Uses Alternative Educational Resources.

▽ 2725 G 5 MWF 11:10a.m.-12:35p.m. MAN 234 LEAVENS A

▽ 2730 H 5 MWF 11:10a.m.-12:35p.m. AAR 130 HULL K

▽ 2735 I 5 TTh 11:10a.m.-1:10p.m. AAR 130 LEMIERE A

☉ Uses Alternative Educational Resources.

▽ 2745 J 5 MWF 1:20p.m.-2:45p.m. HSB 107 NORWOOD K

☉ Uses Alternative Educational Resources.

▽ 2750 K 5 MW 1:20p.m.-3:20p.m. AAR 130 LEMIERE A

☉ Uses Alternative Educational Resources.

▽ 2755 L 5 MWF 9:00a.m.-10:25a.m. AAR 130 HULL K

▽ 2760 M 5 TTh 1:20p.m.-3:20p.m. AAR 130 LEMIERE A

☉ Uses Alternative Educational Resources.

▽ 2770 O 5 MW 1:20p.m.-3:20p.m. AAR 128 DIGERLANDO N

☉ Uses Alternative Educational Resources.

▽ 2775 S 5 MW 1:20p.m.-3:20p.m. HSB 123 BAUER H

▽ 2780 U 5 TTh 9:00a.m.-11:00a.m. AAR 130 BAUER H

▽ 2785 V 5 MWF 9:00a.m.-10:25a.m. HSB 105 NORWOOD K

☉ Uses Alternative Educational Resources.

▽ 2790 W 5 DAILY 9:00a.m.-9:50a.m. DTV 214 RISTER M

▽ 2795 X 5 DAILY 1:20p.m.-2:10p.m. DTV 214 STRICKLAND J

**ENGL& 102 COMPOSITION II**

▽ 2800 A 5 W 1:20p.m.-3:20p.m. AAR 104 FRANCKIEWICZ

Hybrid class; partially online.

2805 B 5 MW 9:00a.m.-11:00a.m. AAR 106 FRANCKIEWICZ

2810 C 5 TTh 11:10a.m.-1:10p.m. AAR 104 DAWKINS W

▽ 2815 DE 5 ARR ARR ARR MCCARTHY D

Online class.

▽ 2820 DE1 5 ARR ARR ARR MCCARTHY D

Online class.

**ENGL 106 NW VOICES CREATIVE WRITING**

▽ 1566 A 2 W 11:10a.m.-1:10p.m. MAN 149 BAUER H

**ENGL 110 INDUSTRIAL COMMUNICATION**

▽ 2640 A 5 TTh 1:20p.m.-3:20p.m. AAR 128 DIGERLANDO N

**ENGL 124 ARTS MAGAZINE PUBLICATION I**

H,P

▽ 2645 A 2 F 1:00p.m.-3:00p.m. AAR 146 HULL K

Students must arrange one additional hour lab time per week.

⊗ Course is clustered with other class sections that meet at the same time, in the same classroom.

**ENGL 140 WOMEN WRITERS:DIV**

D,H

▽ 2678 A 5 MW 9:00a.m.-11:00a.m. HSB 106 DIGERLANDO N

# Fall Events at Lower Columbia College

## ROSE CENTER FOR THE ARTS

### ART GALLERY

**John Bissonette**  
July 12 - August 16  
Reception: July 11, 4-6 p.m.

...

**J. Gordon**  
September 20 - October 12  
Reception: Sept. 19, 4-6 p.m.

...

**LCC Art Faculty Exhibit**  
November 1 - 30  
Reception: Oct. 31, 4-6 p.m.  
[lowercolumbia.edu/gallery](http://lowercolumbia.edu/gallery)

### THEATRE

#### *Coming Soon!*

#### Fall Production TBA Center Stage Theatre

Friday, November 10	7:30 p.m.
Saturday, November 11	7:30 p.m.
Sunday, November 12	2:00 p.m.
Thursday, November 16	7:30 p.m.*
Friday, November 17	7:30 p.m.
Saturday, November 18	7:30 p.m.

\* Talkback immediately following performance

[lowercolumbia.edu/aande](http://lowercolumbia.edu/aande)

### CONCERTS

**Symphonic Band**  
November 21

**Jazz Night**  
November 28

**Choir Concert**  
December 1

Performances at 7:30 p.m.  
Wollenberg Auditorium  
[lowercolumbia.edu/aande](http://lowercolumbia.edu/aande)

## National Theatre Live at the Rose Center

Experience Britain's most acclaimed stage productions through National Theatre Live, a groundbreaking project to present world-class theatre in cinemas around the world. Tickets available online and at Rose Center Box Office one hour prior to performance. Visit [lowercolumbia.edu/ntlive](http://lowercolumbia.edu/ntlive) for ticket information and schedule of events.

- *Obsession*: July 12, 3 p.m.
- *Who's Afraid Of Virginia Woolf?*: July 19, 3 p.m.
- *Salomé*: July 26, 3 p.m.
- *Peter Pan*: August 2, 3 p.m.
- *Angels in America Part One - Millennium Approaches*: August 9, 3 p.m.
- *Angels in America Part Two - Perestroika*: August 16, 3 p.m.
- *Rosencrantz and Guildenstern are Dead*: September 27, 3 p.m.
- *Obsession*: October 11, 3 p.m.
- *Twelfth Night*: October 25, 3 p.m.
- *Yerma*: November 15, 3 p.m.
- *Amadeus*: December 6, 3 p.m.
- *Peter Pan*: December 10, 3 p.m.

**National  
Theatre  
Live**



## Take college courses (tuition-free!) while in high school

**Running Start** is a statewide program—authorized by the Washington State Legislature—that allows high school juniors and seniors to attend LCC tuition free. Students can attend both their high school and LCC, or just LCC. Students receive both high school and college credit for classes completed at the college. College credits are paid for by the high school.

The decision to enroll in Running Start is made by students and their families.\* Students coordinate with their high school advisors to ensure the classes they're taking fulfill high school graduation requirements. Students can participate in sports and other activities at their high schools while in Running Start.

Students in Running Start are responsible for mandatory fees, books and transportation to the campus. Many classes are available online as well as on campus.

Learn more at [lowercolumbia.edu/running-start](http://lowercolumbia.edu/running-start) or call 360.442.2442.

\* Please see [lowercolumbia.edu/running-start](http://lowercolumbia.edu/running-start) for program eligibility requirements.



## Don't let **DISTANCE** keep you from earning your **BACHELOR'S DEGREE** or Master's!

Earn your bachelor's or master's degree through the Lower Columbia Regional University Center without leaving home. Over a dozen different degree options are available through a number of university partners. Flexible scheduling is available to help you balance work and family commitments while pursuing the degree that's right for you.

Learn more at [lowercolumbia.edu/u-center](http://lowercolumbia.edu/u-center) or call 360.353.7800.

## Course # Course Name

Item#	Sec.#	Cred.#	Days	Time	Place	Instructor
-------	-------	--------	------	------	-------	------------

**ENGL 224 ARTS MAGAZINE PUBLICATION IV** **H,P**

▽ 2655 A	2	F		1:00p.m.-3:00p.m.	AAR 146	HULL K
----------	---	---	--	-------------------	---------	--------

Students must arrange one additional hour lab time per week.

⊗ Course is clustered with other class sections that meet at the same time, in the same classroom.

**ENGL 231 CREATIVE WRITING** **H**

▽ 2660 A	5	TTh		1:20p.m.-3:20p.m.	AAR 129	HULL K
----------	---	-----	--	-------------------	---------	--------

⊗ Course is clustered with other class sections that meet at the same time, in the same classroom.

**ENGL 232 CREATIVE WRITING** **H**

▽ 2665 A	5	TTh		1:20p.m.-3:20p.m.	AAR 129	HULL K
----------	---	-----	--	-------------------	---------	--------

⊗ Course is clustered with other class sections that meet at the same time, in the same classroom.

**ENGL 233 CREATIVE WRITING** **H**

▽ 2670 A	5	TTh		1:20p.m.-3:20p.m.	AAR 129	HULL K
----------	---	-----	--	-------------------	---------	--------

⊗ Course is clustered with other class sections that meet at the same time, in the same classroom.

**ENGL 270 LITERATURE FOR CHILDREN** **H**

▽ 2675 DE	5	ARR	ARR		ARR	MCCARTHY D
-----------	---	-----	-----	--	-----	------------

Online class.

**EVENING CLASSES****ENGL& 101 ENGLISH COMPOSITION I**

▽ 2765 N	5	T		5:15p.m.-7:30p.m.	MAN 147	LEAVENS A
----------	---	---	--	-------------------	---------	-----------

Hybrid class; partially online.

**ENGL& 102 COMPOSITION II**

▽ 2825 N	5	W		5:15p.m.-7:30p.m.	AAR 130	WALKER N
----------	---	---	--	-------------------	---------	----------

Hybrid class; partially online.

## Attention LCC Alumni

We invite you to make a fresh connection to LCC by signing up to become a member of the Alumni Association. Whether you earned a degree or certificate or completed just one quarter, we consider you part of our alumni family.

*We look forward to connecting with you!*



What are you waiting for? Learn more at [lowercolumbia.edu/alumni](http://lowercolumbia.edu/alumni)

## Environmental Science

**ENVS 150 ENVIRONMENT & SOCIETY:DIV****D,NS**

▽ 2865 HB	5	W		1:10p.m.-3:00p.m.	HSB 135	LAPIERRE L
-----------	---	---	--	-------------------	---------	------------

Hybrid class; partially online.

## Geology

**GEOL& 101 INTRODUCTION PHYSICAL GEOLOGY****NSL**

2970 A	5	MWF		12:10p.m.-1:00p.m.	HSB 139	SALISBURY M
		TTh		2:00p.m.-3:50p.m.	HSB 139	SALISBURY M

Lab Fee: \$18.60

**GEOL& 208 GEOLOGY OF THE PACIFIC NW****NSL**

▽ 2975 DE	5	ARR	ARR		ARR	DAWES R
-----------	---	-----	-----	--	-----	---------

Online class. Lab included.

## High School Completion

The High School Completion Lab is located in the International Center. Please call 360.442.2691 for more information. Students may enroll in HSC classes for up to 5 credits.

<b>HSC 072</b>	<b>Collection Evidence-R/W</b>	<b>3250</b>
<b>HSC 073</b>	<b>Visual Arts - Drawing</b>	<b>3255</b>
<b>HSC 074</b>	<b>Student Success</b>	<b>3260</b>
<b>HSC 075</b>	<b>Introduction to Drama</b>	<b>3265</b>
<b>HSC 076</b>	<b>Family Life</b>	<b>3270</b>
<b>HSC 077</b>	<b>Active Fitness</b>	<b>3275</b>
<b>HSC 078</b>	<b>Collection Evidence-A/G</b>	<b>3280</b>
<b>HSC 079</b>	<b>Math Concepts-Geometry</b>	<b>3285</b>
<b>HSC 080</b>	<b>Math Concepts-Algebra</b>	<b>3290</b>
<b>HSC 081</b>	<b>Culminating Project</b>	<b>3295</b>
<b>HSC 082</b>	<b>Reading Reboot</b>	<b>3300</b>
<b>HSC 083</b>	<b>Career Planning</b>	<b>3305</b>
<b>HSC 084</b>	<b>Fitness and Nutrition</b>	<b>3310</b>
<b>HSC 085</b>	<b>Mental and Social Health</b>	<b>3315</b>
<b>HSC 086</b>	<b>Introduction to Literature</b>	<b>3320</b>
<b>HSC 087</b>	<b>Introduction to Poetry</b>	<b>3325</b>
<b>HSC 088</b>	<b>Introduction to Writing</b>	<b>3330</b>
<b>HSC 089</b>	<b>English Essentials</b>	<b>3335</b>
<b>HSC 090</b>	<b>Natural Hazards</b>	<b>3340</b>
<b>HSC 091</b>	<b>Environmental Science</b>	<b>3345</b>
<b>HSC 092</b>	<b>Civics</b>	<b>3350</b>
<b>HSC 093</b>	<b>US History I</b>	<b>3355</b>
<b>HSC 094</b>	<b>US History II</b>	<b>3360</b>
<b>HSC 095</b>	<b>Washington State History</b>	<b>3365</b>
<b>HSC 096</b>	<b>Contemporary World Problems</b>	<b>3370</b>
<b>HSC 097</b>	<b>Personal Finance</b>	<b>3375</b>
<b>HSC 098</b>	<b>Introduction to Biology</b>	<b>3380</b>
<b>HSC 099</b>	<b>US History 3</b>	<b>3382</b>

## Course # Course Name

Item#	Sec.#	Cred.#	Days	Time	Place	Instructor
-------	-------	--------	------	------	-------	------------

## History

**HIST& 126 WORLD CIVILIZATION I:DIV****D,H**

▽ 3060 A	5	TTh	1:20p.m.-3:20p.m.	MAN 235	SHAH C
----------	---	-----	-------------------	---------	--------

**HIST& 136 US HISTORY 1****SS**

▽ 3070 A	5	MWF	11:10a.m.-12:35p.m.	MAN 145	SHAH C
----------	---	-----	---------------------	---------	--------

▽ 3085 DE	5	ARR	ARR	ARR	VAUGHN C
-----------	---	-----	-----	-----	----------

Online class.

**HIST& 137 US HISTORY 2****SS**

▽ 3090 A	5	MW	9:00a.m.-11:00a.m.	MAN 119	VAUGHN C
----------	---	----	--------------------	---------	----------

▽ 3095 DE	5	ARR	ARR	ARR	SHAH C
-----------	---	-----	-----	-----	--------

Online class.

## Health

All Health 100 sections will be charged a \$12.50 fee.

**HLTH 100 OCCUPATIONAL SAFETY AND HEALTH**

3100 A	3	MW	11:10a.m.-12:25p.m.	DTV 202	JOHNSON B
--------	---	----	---------------------	---------	-----------

▽ 3105 HB	3	ARR	ARR	DTV 202	JOHNSON B
-----------	---	-----	-----	---------	-----------

The 1st Aid/CPR session will be held on Saturday, October 7 from 8:00 a.m. to 5:00 p.m. in DTV 202.

Hybrid class; partially online.

**HLTH 106 HEALTH AND WELLNESS**

▽ 3120 DE	2	ARR	ARR	ARR	ROSS E
-----------	---	-----	-----	-----	--------

Students must log into canvas for class instructions and syllabus.

Online class.

## Human Development

**HDEV 120 INDIVIDUAL & GROUP RELATIONS**

3030 A	1-2	M	2:00p.m.-4:00p.m.	MAN 148	HOGUE J
--------	-----	---	-------------------	---------	---------

## Humanities

**HUM 106 COMMUNITY CONVERSATIONS**

▽ 3405 A	1	Th	12:00p.m.-1:00p.m.	HSB 101	SHAH C
----------	---	----	--------------------	---------	--------

Topic - Movies and Meaning © Uses Alternative Educational Resources.

**HUM 107 HOW TO SEE A PLAY****H**

▽ 3410 A	1	ARR	ARR	ARR	RICHARD B
----------	---	-----	-----	-----	-----------

Class will meet Thursday, November 16 at 7 p.m. at the Center Stage Theatre.

Hybrid class; partially online.

**HUM 150 ETHICS AND POLICY IN HEALTHCARE I****H**

▽ 3415 A	1	M	1:00p.m.-3:00p.m.	HSB 221	HAMER J
----------	---	---	-------------------	---------	---------

**HUM 210 MYTH AND RITES:DIV****D,H**

3426 A	5	TTh	1:20p.m.-3:20p.m.	PSC 102	LEACH M
--------	---	-----	-------------------	---------	---------

▽ 3428 DE	5	ARR	ARR	ARR	LEACH M
-----------	---	-----	-----	-----	---------

Online class.

**HUM& 116 HUMANITIES I****H**

3425 A	5	MWF	1:10p.m.-2:35p.m.	AAR 129	LEACH M
--------	---	-----	-------------------	---------	---------

## Individualized Certificate

The Individualized Certificate Program (ICP) provides an option for students to participate in a specialized training program combining LCC courses and a cooperative work experience with a local employer.

Students will be expected to attend a classroom seminar to build a career portfolio while learning to conduct informational interviews with professionals in their field. Students will learn how to search for future employment and build an employment portfolio.

Students may earn a Certificate of Proficiency (45+ credits) by completing all credit requirements established for their specialized program.

For more information please contact the Work Based Learning Manager, Dani Trimble, at 360.442.2622 or email [dtrimble@lowercolumbia.edu](mailto:dtrimble@lowercolumbia.edu)

**ICP 288 CO-OP WORK EXPERIENCE**

3435 A	1-7	ARR	ARR	ARR	STAFF
--------	-----	-----	-----	-----	-------

Lab Fee: \$15.00

**ICP 289 EMPL PORTFOLIO SEMINAR**

▽ 3440 A	1	F	12:10p.m.-1:00p.m.	MAN 148	TRIMBLE D
----------	---	---	--------------------	---------	-----------

**ICP 299 INDEPENDENT STUDY**

3445 A	1-10	ARR	ARR	ARR	STAFF
--------	------	-----	-----	-----	-------

## Information Technology

Unless noted otherwise, a computer lab fee is charged for all Information Technology classes.

**IT 100 IT FUNDAMENTALS**

▽ 2085 A	5	Th	11:10a.m.-1:10p.m.	VOC 119	RIJNHART S
----------	---	----	--------------------	---------	------------

Hybrid class; partially online.

**IT 111 INTRODUCTION TO WINDOWS**

2115 A	4	MW	9:00a.m.-11:00a.m.	VOC 116	DERKACHT D
--------	---	----	--------------------	---------	------------

**IT 141 PC TECHNICIAN I**

▽ 2145 A	4	Th	1:20p.m.-2:45p.m.	VOC 119	RIJNHART S
----------	---	----	-------------------	---------	------------

Hybrid class; partially online.

**IT 211 INTRODUCTION TO NETWORKING**

▽ 2155 A	5	T	1:20p.m.-3:25p.m.	VOC 119	RIJNHART S
----------	---	---	-------------------	---------	------------

Prerequisite CS 144 or instructor permission.

Hybrid class; partially online.

**IT 230 DATABASE DEVELOPMENT**

▽ 2160 A	5	TTh	9:00a.m.-11:00a.m.	AAR 110C	ROSI D
----------	---	-----	--------------------	----------	--------

Hybrid class; partially online.

**IT 294 CAREER SUCCESS**

▽ 2162 A	2	W	12:10p.m.-1:00p.m.	HSB 107	HOMME S
----------	---	---	--------------------	---------	---------

Hybrid class; partially online.

⊗ Course is clustered with other class sections that meet at the same time, in the same classroom. © Uses Alternative Educational Resources.



## Course # Course Name

Item#	Sec.#	Cred.#	Days	Time	Place	Instructor
-------	-------	--------	------	------	-------	------------

## Machine Trades

There is a fee of \$13.00 per student per quarter for all MASP classes.

**MASP 107 MACHINING FOR RELATED OCCUPATIONS**

3555 A 2-6 DAILY 8:00a.m.-11:00a.m. VOC 114 SHEPHERD N

Note: This course may be taken for 2-6 credits only.

⊗ Course is clustered with other class sections that meet at the same time, in the same classroom.

**MASP 111 MACHINE SHOP I**

3565 A 2-10 DAILY 8:00a.m.-11:00a.m. VOC 114 SHEPHERD N

Note: This course may be taken for 2-10 credits only.

⊗ Course is clustered with other class sections that meet at the same time, in the same classroom.

**MASP 112 MACHINE SHOP II**

3580 A 2-10 DAILY 8:00a.m.-11:00a.m. VOC 114 SHEPHERD N

Note: This course may be taken for 2-10 credits only.

Prerequisite 10 credits of MASP 107 and/or MASP 111. ⊗ Course is clustered with other class sections that meet at the same time, in the same classroom.

**MASP 113 MACHINE SHOP III**

3590 A 2-10 DAILY 8:00a.m.-11:00a.m. VOC 114 SHEPHERD N

Note: This course may be taken for 2-10 credits only. Prerequisite 10 credits of MASP 112. ⊗ Course is clustered with other class sections that meet at the same time, in the same classroom.

**MASP 114 MACHINE SHOP IV**

3600 A 2-10 DAILY 8:00a.m.-11:00a.m. VOC 114 SHEPHERD N

Note: This course may be taken for 2-10 credits only. Prerequisite: 10 credits of MASP 113. ⊗ Course is clustered with other class sections that meet at the same time, in the same classroom.

**MASP 204 CNC MACHINING CENTER FUNDAMENTALS**

3610 MK 3 ARR ARR ARR TODD K

This section is self-paced. See instructor.

**MASP 205 CNC TURNING CENTER FUNDAMENTALS**

3615 MK 3 ARR ARR ARR TODD K

This section is self-paced. See instructor.

**MASP 221 CNC MILLING**

3620 A 2-10 DAILY 8:00a.m.-11:00a.m. VOC 114 TODD K

Prerequisite MASP 204. Note: This course may be taken for 2-10 credits only.

⊗ Course is clustered with other class sections that meet at the same time, in the same classroom.

**MASP 222 CNC TURNING**

3630 A 2-10 DAILY 8:00a.m.-11:00a.m. VOC 114 TODD K

Prerequisite MASP 205. Note: This course may be taken for 2-10 credits only.

⊗ Course is clustered with other class sections that meet at the same time, in the same classroom.

**MASP 223 ADVANCED CNC PROCESSES**

3640 A 2-6 DAILY 8:00a.m.-11:00a.m. VOC 114 TODD K

Prerequisite: MASP 221 or MASP 222. Note: This course may be taken for 2-6 credits only. ⊗ Course is clustered with other class sections that meet at the same time, in the same classroom.

**MASP 299 INDEPENDENT STUDY**

3660 MM 1-2 ARR ARR ARR TODD K

## EVENING CLASSES

**MASP 107 MACHINING FOR RELATED OCCUPATIONS**

3560 N 2 W 6:00p.m.-9:00p.m. VOC 114 SHEPHERD N

⊗ Course is clustered with other class sections that meet at the same time, in the same classroom.

**MASP 111 MACHINE SHOP I**

3575 N 2 W 6:00p.m.-9:00p.m. VOC 114 SHEPHERD N

⊗ Course is clustered with other class sections that meet at the same time, in the same classroom.

**MASP 112 MACHINE SHOP II**

3585 N 2 W 6:00p.m.-9:00p.m. VOC 114 SHEPHERD N

Prerequisite 10 credits of MASP 107 and/or MASP 111.

⊗ Course is clustered with other class sections that meet at the same time, in the same classroom.

**MASP 113 MACHINE SHOP III**

3595 N 2 W 6:00p.m.-9:00p.m. VOC 114 SHEPHERD N

Prerequisite 10 credits of MASP 112.

⊗ Course is clustered with other class sections that meet at the same time, in the same classroom.

**MASP 114 MACHINE SHOP IV**

3605 N 2 W 6:00p.m.-9:00p.m. VOC 114 SHEPHERD N

Prerequisite: 10 credits of MASP 113.

⊗ Course is clustered with other class sections that meet at the same time, in the same classroom.

## Manufacturing

**MFG 115 MANUFACTURING PROCESS**

4150 A 5 DAILY 12:10p.m.-1:00p.m. VOC 113 SHEPHERD N

Lab Fee: \$26.10

**MFG 140 HYDRAULICS**

4160 A 4 MT 7:50a.m.-9:30a.m. DTV 106A ECKLUND K

⊗ Course is clustered with other class sections that meet at the same time, in the same classroom.

## MATH BOOT CAMP

Save time, money and stress when you attend a Math Boot Camp. You can save up to \$573.95 if you test just one class higher! Best of all, it is FREE!

At the boot camp you will:

- Review important math concepts
- Learn test-taking strategies
- Discuss tips to overcoming math anxiety
- Learn about My Math Lab

Sign up at the Testing Office in the Admissions Center or call 360.442.2353 for more information.

**Single Evening Session**

August 9, 5-8 p.m.

**2 Day Intensive Session**

August 29-30, 9 a.m.-12 p.m.

**Registration Required**

[lowercolumbia.edu/math-boot-camp](http://lowercolumbia.edu/math-boot-camp)





## Course # Course Name

▽ Item# Sec.# Cred.# Days Time Place Instructor

## Mathematics

Math classes at LCC are offered in three different formats to meet a variety of student needs:

- Standard math classes, where a lecture is presented and homework assigned.
- Online classes.
- Math Achievement Center classes, where students work on their own with the assistance of tutors and an instructor. See the next page.

It is very important that students take the Placement Assessment before enrolling in math classes. This test helps to ensure that any prerequisites are met and that students enroll in the proper level of mathematics. The Placement Assessment is given in the Entry Center. Call 360.442.2311 for more information.

Online homework and electronic textbook for all MATH 078/079, 088/089, 098/099, 141, 142, 153, and 210 provided by Pearson Education. To resolve technical problems, please contact Technical Support for MyLabsPlus at 1.888.883.1299 or helpdesk@lowercolumbia.mylabsplus.com

Please note: All mathematics prerequisites must be met with a grade of C or better. See your advisor or refer to the LCC catalog for more information.

## Pre-College Math

## MATH 050 REVIEW MATH-WHOLE NUMBER

3675 A 1 DAILY 10:00a.m.-10:50a.m. AAR 123 SKEIE M  
Start Date: 09/18/17 End Date 10/13/17

▽ 3680 P 1 DAILY ARR AAR 110 MAC  
Hybrid class; partially online.

3682 DE 1 ARR ARR AAR 110 MAC

## MATH 078 PRE-COLLEGE MATH I

3676 A 3 DAILY 10:00a.m.-10:50a.m. AAR 123 SKEIE M  
Start Date: 10/16/17 End Date 12/01/17

▽ 3725 P 3 DAILY ARR AAR 110 MAC  
Hybrid class; partially online.

3727 DE 3 ARR ARR AAR 110 MAC

## MATH 079 PRE-COLLEGE MATH I

▽ 3770 P 2 DAILY ARR AAR 110 MAC  
Hybrid class; partially online.

3772 DE 2 ARR ARR AAR 110 MAC

## MATH 078/079 PRE-COLLEGE MATH I — 5 Credits

3690 and 3691 B DAILY 8:00a.m.-8:50a.m. MAN 146 BABBICK L  
3695 and 3696 C DAILY 9:00a.m.-9:50a.m. MAN 146 BRIEN R  
3700 and 3701 E DAILY 10:00a.m.-10:50a.m. VOC 112 BYKER B  
3705 and 3706 G DAILY 11:10a.m.-12:00p.m. AAR 123 SKEIE M  
3715 and 3716 I DAILY 1:20p.m.-2:10p.m. AAR 103 BYKER B

## MATH 079/088 PRE-COLLEGE MATH I/II — 5 Credits

3760 and 3761 J DAILY 11:10a.m.-12:00p.m. HSB 107 BRIEN R

## MATH 087/097 ESSENTIALS OF PRE-COLLEGE MATH II/III — 6 Credits

3775 and 3776 A MWF 8:00a.m.-8:50a.m. MAN 119 SKEIE T  
TTh 8:00a.m.-10:05a.m.  
3780 and 3781 B MWF 11:10a.m.-12:00p.m. HSB 104 STETZER J  
TTh 11:10a.m.-1:15p.m.  
3785 and 3786 C MWF 1:20p.m.-2:10p.m. HSB 104 STETZER J  
TTh 1:20p.m.-3:25p.m.

## MATH 088 PRE-COLLEGE MATH II

▽ 3805 P 3 DAILY ARR AAR 110 MAC  
Hybrid class; partially online.

## MATH 089 PRE-COLLEGE MATH II

▽ 3835 P 2 DAILY ARR AAR 110 MAC  
Hybrid class; partially online.

## MATH 088/089 PRE-COLLEGE MATH II — 5 Credits

3810 and 3811 R DAILY 10:00a.m.-10:50a.m. MAN 146 SWEE R  
3815 and 3816 S MWF 11:10a.m.-12:35p.m. AAR 106 SKEIE T  
3820 and 3821 U DAILY 8:00a.m.-8:50a.m. AAR 123 SKEIE M  
3790 and 3791 DE ARR ARR ARR BENJAMIN B  
Online class.

## MATH 089/098 PRE-COLLEGE MATH II/III — 5 Credits

3855 and 3856 V DAILY 9:00a.m.-9:50a.m. VOC 112 MORRISON D

## MATH 098 PRE-COLLEGE MATH III

▽ 3880 P 3 DAILY ARR AAR 110 MAC  
Hybrid class; partially online.

## MATH 099 PRE-COLLEGE MATH III

▽ 3905 P 2 DAILY ARR AAR 110 MAC  
Hybrid class; partially online.

## MATH 098/099 PRE-COLLEGE MATH III — 5 Credits

3890 and 3891 W MWF 9:00a.m.-10:25a.m. AAR 102 RHODE C  
3895 and 3896 X MWF 1:20p.m.-2:45p.m. AAR 123 SKEIE M  
3875 and 3876 DE DAILY ARR ARR MALOZZI J  
Online class.

## EVENING CLASSES

## MATH 078/079 PRE-COLLEGE MATH I — 5 Credits

3720 and 3721 N MTWTh 5:15p.m.-6:15p.m. AAR 104 BRIEN R

## MATH 088/089 PRE-COLLEGE MATH II — 5 Credits

3800 and 3801 N TTh 5:15p.m.-7:20p.m. MAN 119 STETZER J

## College-Level Math

## MATH 105 MATH FOR HEALTH SCIENCES

3920 A 5 MWF 1:20p.m.-2:45p.m. VOC 112 SWEE R

## MATH 106 INDUSTRIAL MATH

3930 A 5 MWF 1:20p.m.-2:45p.m. AAR 106 BRIEN R

## MATH&amp; 107 MATH IN SOCIETY

4005 A 5 MWF 9:00a.m.-10:25a.m. PSC 102 HEBERT M  
Prerequisite MATH 099 with a grade of C or better.  
4000 B 5 MWF 1:20p.m.-2:45p.m. MAN 147 RHODE C  
Prerequisite MATH 099 with a grade of C or better. © Uses Alternative Educational Resources.

▽ 4008 DE 5 ARR ARR ARR BENJAMIN B  
Prerequisite MATH 099 with a grade of C or better.  
Online class.

## MATH 125 APPLIED COLLEGE ALGEBRA

3945 A 5 MWF 1:20p.m.-2:45p.m. MAN 145 HEBERT M

## MATH&amp; 131 MATH FOR ELEMENTARY EDUCATION 1

▽ 4010 A 5 MWF 9:00a.m.-10:25a.m. MAN 147 SAMUELS S

## MATH&amp; 141 PRECALCULUS I

4015 A 5 TTh 9:00a.m.-11:00a.m. PSC 104 DRAUS D  
4020 B 5 MWF 11:10a.m.-12:35p.m. PSC 102 RHODE C  
4022 C 5 MWF 1:20p.m.-2:45p.m. PSC 102 SAMUELS S  
4025 LS 5 MTWTh 1:20p.m.-3:20p.m. MAN 146 BENJAMIN B  
This is a linked class. Students must also register for MATH& 142 LS, #5785.

## Course # Course Name

Item#	Sec.#	Cred.#	Days	Time	Place	Instructor
-------	-------	--------	------	------	-------	------------

**MATH& 142 PRE-CALCULUS II**

NS

4030 A	5	MWF	11:10a.m.-12:35p.m.	AAR 104	HEBERT M
4035 LS	5	MTWTh	1:20p.m.-3:20p.m.	MAN 146	BENJAMIN B

This is a linked class. Students must also register for MATH&amp; 141 LS, #5775.

**MATH& 151 CALCULUS I**

NS

4040 A	5	DAILY	11:25a.m.-12:15p.m.	PSC 104	DRAUS D
4042 B	5	DAILY	10:00a.m.-10:50a.m.	HSB 107	MALOZZI J

**MATH 210 ELEMENTS OF STATISTICS**

NS

3950 A	5	DAILY	8:00a.m.-8:50a.m.	HSB 107	SWEET R
--------	---	-------	-------------------	---------	---------

⊗ Course is cross-listed as BUS 206 and Math 210.

3955 B	5	TTh	1:20p.m.-3:20p.m.	MAN 233	SAMUELS S
--------	---	-----	-------------------	---------	-----------

⊗ Course is cross-listed as BUS 206 and Math 210.

3960 DE	5	ARR	ARR	ARR	MALOZZI J
---------	---	-----	-----	-----	-----------

Online class.

⊗ Course is cross-listed as BUS 206 and MATH 210.

3965 DE1	5	ARR	ARR	ARR	MALOZZI J
----------	---	-----	-----	-----	-----------

Online class.

⊗ Course is cross-listed as BUS 206 and MATH 210.

3962 DE2	5	ARR	ARR	ARR	HEBERT M
----------	---	-----	-----	-----	----------

Online class.

⊗ Course is cross-listed as BUS 206 and MATH 210.

**MATH& 254 CALCULUS IV**

NS

4060 A	5	MWF	12:25p.m.-1:50p.m.	PSC 104	DRAUS D
--------	---	-----	--------------------	---------	---------

**EVENING CLASSES****MATH 210 ELEMENTS OF STATISTICS**

NS

3970 N	5	TTh	5:15p.m.-7:20p.m.	MAN 146	RHODE C
--------	---	-----	-------------------	---------	---------

⊗ Course is cross-listed as BUS 206 and Math 210.

**Medical Assisting****MEDA 101 MEDICAL VOCABULARY I**

4065 A	3	MW	1:30p.m.-2:45p.m.	HSB 244	ENGEL E
--------	---	----	-------------------	---------	---------

**MEDA 120 SURVEY OF ANATOMY AND PHYSIOLOGY**

4085 A	5	TTh	8:30a.m.-10:45a.m.	HSB 244	SOLADEY V
--------	---	-----	--------------------	---------	-----------

Program Director's permission required to enroll.

**MEDA 122 LAW & ETHICS FOR THE MEDICAL OFFICE**

4091 A	3	MW	3:15p.m.-4:30p.m.	HSB 244	ENGLE E
--------	---	----	-------------------	---------	---------

**MEDA 161 EXAMINING ROOM PROCEDURES I**

4095 A	4	M	8:30a.m.-11:00a.m.	HSB 244	SOLADEY V
--------	---	---	--------------------	---------	-----------

Program Director's permission required to enroll. Students must also enroll for one of the lab sections, MEDA 161 LA or LB.  
Lab Fee: \$35.60

**MEDA 161 EXAMINING ROOM PROCEDURES I—LAB**

4105 LA	0	W	8:30a.m.-10:10a.m.	HSB 244	SOLADEY V
4110 LB	0	W	10:40a.m.-12:20p.m.	HSB 244	SOLADEY V

**MEDA 205 CERTIFICATION REVIEW FOR MEDICAL ASSISTANTS**

4115 DEM	2	ARR	ARR	ARR	SOLADEY V
----------	---	-----	-----	-----	-----------

Online class.

**Music****MUSC 100 FUNDAMENTALS OF MUSIC**

H

4165 A	5	Th	10:00a.m.-12:00p.m.	RCA 220	DAVIS R
--------	---	----	---------------------	---------	---------

Hybrid class; partially online. © Uses Alternative Educational Resources.

**MUSC 101 THEORY/MUSICIANSHIP I**

H

4170 A	5	MWF	10:00a.m.-11:25a.m.	RCA 218	DAVIS R
--------	---	-----	---------------------	---------	---------

Concurrent enrollment in MUSC 111 required.

**MUSC& 105 MUSIC APPRECIATION**

H

4490 DE	5	ARR	ARR	ARR	CHALLED G
---------	---	-----	-----	-----	-----------

Online class.

**MUSC 106 KEYBOARD SKILLS I**

4175 A	1	Th	1:00p.m.-2:30p.m.	RCA 221	DAVIS R
--------	---	----	-------------------	---------	---------

Instructor permission required to enroll.  
Hybrid class; partially online. ⊗ Course is clustered with other class sections that meet at the same time, in the same classroom.

**MUSC 107 KEYBOARD SKILLS II**

4180 A	1	Th	1:00p.m.-2:30p.m.	RCA 221	DAVIS R
--------	---	----	-------------------	---------	---------

Instructor permission required to enroll.  
Hybrid class; partially online. ⊗ Course is clustered with other class sections that meet at the same time, in the same classroom.

**MUSC 108 KEYBOARD SKILLS III**

4185 A	1	Th	1:00p.m.-2:30p.m.	RCA 221	DAVIS R
--------	---	----	-------------------	---------	---------

Instructor permission required to enroll.  
Hybrid class; partially online. ⊗ Course is clustered with other class sections that meet at the same time, in the same classroom.

**MUSC 111 EAR TRAINING I**

4190 A	1	MW	11:25a.m.-11:50a.m.	RCA 218	DAVIS R
--------	---	----	---------------------	---------	---------

**MUSC 115 GROUP PIANO INSTRUCTION**

4195 A	2	Th	1:00p.m.-2:30p.m.	RCA 221	DAVIS R
--------	---	----	-------------------	---------	---------

Hybrid class; partially online. ⊗ Course is clustered with other class sections that meet at the same time, in the same classroom.

**MUSC 119 AMERICAN MUSIC:DIV**

D,H

4200 DE	5	ARR	ARR	ARR	HARBAUGH K
---------	---	-----	-----	-----	------------

Online class.

**MUSC 121 CONCERT CHOIR I**

H,P

4220 A	2	MWF	1:10p.m.-2:00p.m.	RCA 102	CHALLED G
--------	---	-----	-------------------	---------	-----------

Instructor permission required to enroll.  
Lab Fee: \$8.10 ⊗ Course is clustered with other class sections that meet at the same time, in the same classroom.

**MUSC 122 CONCERT CHOIR II**

H,P

4225 A	2	MWF	1:10p.m.-2:00p.m.	RCA 102	CHALLED G
--------	---	-----	-------------------	---------	-----------

Instructor permission required to enroll.  
Lab Fee: \$8.10 ⊗ Course is clustered with other class sections that meet at the same time, in the same classroom.

**MUSC 123 CONCERT CHOIR III**

H,P

4230 A	2	MWF	1:10p.m.-2:00p.m.	RCA 102	CHALLED G
--------	---	-----	-------------------	---------	-----------

Instructor permission required to enroll.  
Lab Fee: \$8.10 ⊗ Course is clustered with other class sections that meet at the same time, in the same classroom.

**MUSC 131 BEGINNING GUITAR**

4205 A	2	TTh	3:30p.m.-4:20p.m.	RCA 102	HARBAUGH K
--------	---	-----	-------------------	---------	------------

Guitars are provided for student use. Students will be allowed to take guitars home for practice.  
Hybrid class; partially online. ⊗ Course is clustered with other class sections that meet at the same time, in the same classroom.

## Course # Course Name

▽ Item#	Sec.#	Cred.#	Days	Time	Place	Instructor
---------	-------	--------	------	------	-------	------------

**MUSC 132 INTERMEDIATE GUITAR**

▽ 4207 A 2 TTh 3:30p.m.-4:20p.m. RCA 102 HARBAUGH K  
Guitars are provided for student use. Students will be allowed to take guitars home for practice.  
Hybrid class; partially online. ⊗ Course is clustered with other class sections that meet at the same time, in the same classroom.

**MUSC 133 ADVANCED GUITAR**

▽ 4209 A 2 TTh 3:30p.m.-4:20p.m. RCA 102 HARBAUGH K  
Guitars are provided for student use. Students will be allowed to take guitars home for practice.  
Hybrid class; partially online. ⊗ Course is clustered with other class sections that meet at the same time, in the same classroom.

**MUSC 145 BEGINNING VOICE**

▽ 4235 A 2 MW 10:10a.m.-11:00a.m. RCA 102 CHALLED G  
Lab Fee: \$8.10 ⊕ Uses Alternative Educational Resources.

**MUSC 151 BELLA VOCE CHOIR I**

▽ 4245 A 2 MWF 2:10p.m.-3:00p.m. RCA 102 CHALLED G  
Instructor permission required to enroll.  
Lab Fee: \$8.10 ⊗ Course is clustered with other class sections that meet at the same time, in the same classroom.

**MUSC 152 BELLA VOCE CHOIR II**

▽ 4250 A 2 MWF 2:10p.m.-3:00p.m. RCA 102 CHALLED G  
Instructor permission required to enroll.  
Lab Fee: \$8.10 ⊗ Course is clustered with other class sections that meet at the same time, in the same classroom.

**MUSC 153 BELLA VOCE CHOIR III**

▽ 4255 A 2 MWF 2:10p.m.-3:00p.m. RCA 102 CHALLED G  
Instructor permission required to enroll.  
Lab Fee: \$8.10 ⊗ Course is clustered with other class sections that meet at the same time, in the same classroom.

**MUSC 176 INDIVIDUAL INSTRUCTION**

1 credit	ARR	ARR	ARR	H,P STAFF
4260 A Flute	4290 G French Horn	4320 M Violin		
4265 B Oboe	4295 H Trombone	4325 N Viola		
4270 C Clarinet	4300 I Tuba	4330 O Cello		
4275 D Saxophone	4305 J Percussion	4335 P Bass		
4280 E Bassoon	4310 K Guitar	4340 R Vocal		
4285 F Trumpet	4315 L Piano			

A fee of \$500.00 per credit is collected for this course in addition to tuition. To register for Instrumental, contact [rdavis@lowercolumbia.edu](mailto:rdavis@lowercolumbia.edu); for Vocal, contact [gchalled@lowercolumbia.edu](mailto:gchalled@lowercolumbia.edu)

**MUSC 221 CONCERT CHOIR IV**

▽ 4365 A 2 MWF 1:10p.m.-2:00p.m. RCA 102 CHALLED G  
Instructor permission required to enroll.  
Lab Fee: \$8.10 ⊗ Course is clustered with other class sections that meet at the same time, in the same classroom.

**MUSC 222 CONCERT CHOIR V**

▽ 4370 A 2 MWF 1:10p.m.-2:00p.m. RCA 102 CHALLED G  
Instructor permission required to enroll.  
Lab Fee: \$8.10 ⊗ Course is clustered with other class sections that meet at the same time, in the same classroom.

**MUSC 223 CONCERT CHOIR VI**

▽ 4375 A 2 MWF 1:10p.m.-2:00p.m. RCA 102 CHALLED G  
Instructor permission required to enroll.  
Lab Fee: \$8.10 ⊗ Course is clustered with other class sections that meet at the same time, in the same classroom.

**MUSC 225 OPERA WORKSHOP**

▽ 4360 A 2 MW 4:10p.m.-5:00p.m. RCA 102 CHALLED G

**MUSC 251 BELLA VOCE CHOIR IV**

▽ 4380 A 2 MWF 2:10p.m.-3:00p.m. RCA 102 CHALLED G  
Instructor permission required to enroll.  
Lab Fee: \$8.10 ⊗ Course is clustered with other class sections that meet at the same time, in the same classroom.

**MUSC 252 BELLA VOCE CHOIR V**

▽ 4385 A 2 MWF 2:10p.m.-3:00p.m. RCA 102 CHALLED G  
Instructor permission required to enroll.  
Lab Fee: \$8.10 ⊗ Course is clustered with other class sections that meet at the same time, in the same classroom.

**MUSC 253 BELLA VOCE CHOIR VI**

▽ 4390 A 2 MWF 2:10p.m.-3:00p.m. RCA 102 CHALLED G  
Instructor permission required to enroll.  
Lab Fee: \$8.10 ⊗ Course is clustered with other class sections that meet at the same time, in the same classroom.

**MUSC 276 INDIVIDUAL INSTRUCTION**

1 credit	ARR	ARR	ARR	H,P STAFF
4395 A Flute	4425 G French Horn	4455 M Violin		
4400 B Oboe	4430 H Trombone	4460 N Viola		
4405 C Clarinet	4435 I Tuba	4465 O Cello		
4410 D Saxophone	4440 J Percussion	4470 P Bass		
4415 E Bassoon	4445 K Guitar	4475 R Vocal		
4420 F Trumpet	4450 L Piano			

A fee of \$500.00 per credit is collected for this course in addition to tuition. To register for Instrumental, contact [rdavis@lowercolumbia.edu](mailto:rdavis@lowercolumbia.edu); for Vocal, contact [gchalled@lowercolumbia.edu](mailto:gchalled@lowercolumbia.edu)

**EVENING CLASSES****MUSC 130 JAZZ ENSEMBLE**

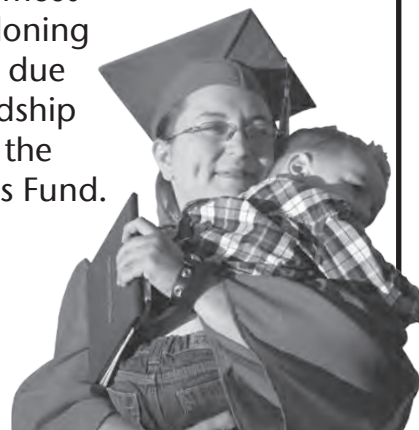
4210 N 2 T 7:00p.m.-9:00p.m. RCA 102 MEAGHER R  
Lab Fee: \$8.10

**MUSC 150 SYMPHONIC BAND**

4240 N 2 Th 7:00p.m.-9:00p.m. RCA 102 DAVIS R  
Instructor permission required to enroll. Lab Fee: \$8.10

**You Can Make a Difference!**

Help a student most at risk of abandoning their education due to financial hardship by donating to the Student Success Fund.



**[lowercolumbia.edu/foundation](http://lowercolumbia.edu/foundation)**  
or call 360.442.2130 to learn more

## Course # Course Name

Item#	Sec.#	Cred.#	Days	Time	Place	Instructor
-------	-------	--------	------	------	-------	------------

## Nursing

The Lower Columbia College Nursing Program is committed to providing excellence in nursing education that encompasses critical thinking, competencies in the role of provider of care, manager of care and member of the profession of nursing, with an emphasis on life-long learning. Nursing is a demanding and rewarding profession that requires strong communication skills, excellent problem-solving abilities, focused concentration when performing a task, attention to detail, the ability to work well with others, and extensive knowledge of the sciences.

Students interested in a nursing career can find information about LCC's nursing programs at [lowercolumbia.edu/programs](http://lowercolumbia.edu/programs). Students who have been admitted to the nursing program should contact their advisor for course and registration information.

Nursing Assistant (NURS 090) is an 8-credit course that provides students the content and experience to give basic nursing care to patients under the supervision of a licensed nurse. Contact Bev Ylen, Nursing and Allied Health Program Assistant, 360.442.2860 for course information and to register.

### EVENING CLASSES

#### NURS 090 NURSING ASSISTANT

▽ 4515 N	8	ARR	ARR	HSB 249	MACLAREN A
Instructor permission required to enroll. Lab Fee: \$51.50					
▽ 4505 LA	0	ARR	ARR	ARR	MACLAREN A
Instructor permission required to enroll. Lab Fee: \$51.50					

## Nutrition

#### NUTR& 101 NUTRITION

NS

▽ 4675 A	5	TTh	11:20a.m.-12:40p.m.	GYM 212	KOOIMAN J
Hybrid class; partially online. ☉ Uses Alternative Educational Resources.					
▽ 4685 C	5	TTh	1:00p.m.-2:20p.m.	GYM 212	KOOIMAN J
Hybrid class; partially online. ☉ Uses Alternative Educational Resources.					
▽ 4690 DE	5	ARR		ARR	ROSS E
Online class. ☉ Uses Alternative Educational Resources.					
▽ 4695 DE1	5	ARR		ARR	KOOIMAN J
Online class. ☉ Uses Alternative Educational Resources.					
▽ 4700 DE2	5	ARR		ARR	ROSS E
Online class. ☉ Uses Alternative Educational Resources.					
▽ 4705 DE3	5	ARR		ARR	KOOIMAN J
Online class. ☉ Uses Alternative Educational Resources.					
▽ 4680 IS	5	MTWTh	9:00a.m.-11:10a.m.	GYM 212	ROSS E
Students must enroll in PSYC 100 IS, #5885 and NUTR& 101 IS, #4680, for a total of 10 credits. ☉ Uses Alternative Educational Resources.					

#### NUTR 299 NUTRITION

▽ 4670 MM1	ARR	ARR	KOOIMAN J
Online class. ☉ Uses Alternative Educational Resources.			

## Oceanography

#### OCEA& 101 INTRODUCTION TO OCEANOGRAPHY

NSL

▽ 4710 DE	5	ARR	ARR	ARR	KHANDRO L
Online class. Lab included.					

## Philosophy

#### PHIL& 101 INTRODUCTION TO PHILOSOPHY

4875 A	5	MWF	9:00a.m.-10:25a.m.	RCA 220	LEACH M
--------	---	-----	--------------------	---------	---------

H

## Physical Education

A \$7.80 fee is charged for each Physical Education class.

#### PHED 104 BEGINNING PILATES & STRETCH

A

4730 A	1	TTh	12:00p.m.-12:50p.m.	GYM 210	SKERBECK C
--------	---	-----	---------------------	---------	------------

☉ Course is clustered with other class sections that meet at the same time, in the same classroom.

#### PHED 106 YOGA FOR BEGINNERS

A

4735 A	1	MW	9:00a.m.-9:50a.m.	GYM 210	SKERBECK C
--------	---	----	-------------------	---------	------------

#### PHED 120 CROSS TRAINING

A

▽ 4740 A	2	M	11:40a.m.-12:30p.m.	GYM 210	ROSS E
		W	11:40a.m.-12:30p.m.	GYM 113	ROSS E

Hybrid class; partially online.

☉ Course is clustered with other class sections that meet at the same time, in the same classroom.

#### PHED 128 WEIGHT TRAINING

A

▽ 4750 A	1-2	TTh	9:00a.m.-9:50a.m.	GYM 113	SHUYLER E
----------	-----	-----	-------------------	---------	-----------

Hybrid class; partially online.

☉ Course is clustered with other class sections that meet at the same time, in the same classroom.

#### PHED 140 BASKETBALL: MEN

4755 A	1	DAILY	12:00p.m.-1:00p.m.	GYM 116	STAFF
--------	---	-------	--------------------	---------	-------

☉ Course is clustered with other class sections that meet at the same time, in the same classroom.

#### PHED 141 BASKETBALL: WOMEN

4760 A	1	DAILY	1:30p.m.-2:20p.m.	GYM 116	MEADORS C
--------	---	-------	-------------------	---------	-----------

☉ Course is clustered with other class sections that meet at the same time, in the same classroom.

#### PHED 146 FASTPITCH SOFTBALL-WOMEN

4765 A	1	DAILY	3:00p.m.-3:50p.m.	ARR	FULLER T
--------	---	-------	-------------------	-----	----------

☉ Course is clustered with other class sections that meet at the same time, in the same classroom.

#### PHED 149 APPLIED SOCCER-WOMEN

4770 A	2	MTWTh	3:10p.m.-5:10p.m.	GYM 211	STAFF
--------	---	-------	-------------------	---------	-------

☉ Course is clustered with other class sections that meet at the same time, in the same classroom.

#### PHED 152 PERSONALIZED FITNESS

A

▽ 4775 DE	1-2	ARR	ARR	ARR	ROSS E
-----------	-----	-----	-----	-----	--------

Students must log into canvas for class instructions and syllabus.

Online class.

▽ 4780 DE1	1-2	ARR	ARR	ARR	ROSS E
------------	-----	-----	-----	-----	--------

Students must log into canvas for class instructions and syllabus.

Online class.

#### PHED 155 ROCK CLIMBING-BEGINNING

4785 A	1	MW	1:00p.m.-1:50p.m.	GYM 113	STAFF
--------	---	----	-------------------	---------	-------

Lab Fee: \$31.20

#### PHED 160 BASEBALL

4790 A	1	MTWTh	2:00p.m.-2:50p.m.	ARR	SMITH E
--------	---	-------	-------------------	-----	---------

☉ Course is clustered with other class sections that meet at the same time, in the same classroom.



## Course # Course Name

▽ Item#	Sec.#	Cred.#	Days	Time	Place	Instructor
---------	-------	--------	------	------	-------	------------

**PHED 167 APPLIED VOLLEYBALL**

4795 A	2	DAILY	3:30p.m.-4:00p.m.	GYM 212	SMITH C
--------	---	-------	-------------------	---------	---------

⊗ Course is clustered with other class sections that meet at the same time, in the same classroom.

**PHED 204 INTERMEDIATE PILATES & STRETCH****A**

4800 A	1	TTh	12:00p.m.-12:50p.m.	GYM 210	SKERBECK C
--------	---	-----	---------------------	---------	------------

⊗ Course is clustered with other class sections that meet at the same time, in the same classroom.

**PHED 215 OUTDOOR SKILLS EXPERIENCE**

▽ 4803 A	2	W	1:00p.m.-2:15p.m.	GYM 212	MILLER J
		F	8:00a.m.-3:00p.m.		

Fridays are off-campus and activities may include two local hikes, biking, kayaking and rock climbing in the LCC fitness center.

Hybrid class; partially online.

Start Date: 09/20/17 End Date 10/13/17

**PHED 220 CROSS TRAINING****A**

▽ 4805 A	2	M	11:40a.m.-12:30p.m.	GYM 210	ROSS E
		W	11:40a.m.-12:30p.m.	GYM 113	ROSS E

Hybrid class; partially online.

⊗ Course is clustered with other class sections that meet at the same time, in the same classroom.

**PHED 228 WEIGHT TRAINING**

▽ 4815 A	1-2	TTh	9:00a.m.-9:50a.m.	GYM 113	SHUYLER E
----------	-----	-----	-------------------	---------	-----------

Hybrid class; partially online.

⊗ Course is clustered with other class sections that meet at the same time, in the same classroom.

**PHED 240 BASKETBALL: MEN**

4820 A	1	DAILY	12:00p.m.-1:00p.m.	GYM 116	STAFF
--------	---	-------	--------------------	---------	-------

⊗ Course is clustered with other class sections that meet at the same time, in the same classroom.

**PHED 241 BASKETBALL: WOMEN**

4825 A	1	DAILY	1:30p.m.-2:20p.m.	GYM 116	MEADORS C
--------	---	-------	-------------------	---------	-----------

⊗ Course is clustered with other class sections that meet at the same time, in the same classroom.

**PHED 246 FASTPITCH SOFTBALL-WOMEN**

4830 A	1	DAILY	3:00p.m.-3:50p.m.	ARR	FULLER T
--------	---	-------	-------------------	-----	----------

⊗ Course is clustered with other class sections that meet at the same time, in the same classroom.

**PHED 249 APPLIED SOCCER-WOMEN**

4835 A	2	MTWTh	3:10p.m.-5:10p.m.	GYM 211	STAFF
--------	---	-------	-------------------	---------	-------

⊗ Course is clustered with other class sections that meet at the same time, in the same classroom.

**PHED 252 PERSONALIZED FITNESS****A**

▽ 4840 DE	1-2	ARR	ARR	ARR	ROSS E
-----------	-----	-----	-----	-----	--------

Students must log into canvas for class instructions and syllabus.

Online class.

▽ 4845 DE1	1-2	ARR	ARR	ARR	ROSS E
------------	-----	-----	-----	-----	--------

Students must log into canvas for class instructions and syllabus.

Online class.

**PHED 260 BASEBALL**

4850 A	1	MTWTh	2:00p.m.-2:50p.m.	ARR	SMITH E
--------	---	-------	-------------------	-----	---------

⊗ Course is clustered with other class sections that meet at the same time, in the same classroom.

**PHED 267 APPLIED VOLLEYBALL**

4855 A	2	DAILY	3:30p.m.-4:00p.m.	GYM 212	SMITH C
--------	---	-------	-------------------	---------	---------

⊗ Course is clustered with other class sections that meet at the same time, in the same classroom.

**PHED 285 FITNESS MARKETING**

4860 A	3	TTh	12:00p.m.-1:15p.m.	GYM 211	SHUYLER E
--------	---	-----	--------------------	---------	-----------

## Physical Science

## EVENING CLASSES

**PHSC 109 ENERGY AND MATTER****NSL**

4880 N	5	TTh	5:15p.m.-7:45p.m.	HSB 135	KEPLER C
--------	---	-----	-------------------	---------	----------

Lab included. Lab Fee: \$14.40

## Physics

**PHYS& 114 GENERAL PHYSICS I****NS**

▽ 4890 A	5	MWThF	8:00a.m.-8:50a.m.	HSB 137	LIVINS P
----------	---	-------	-------------------	---------	----------

Students must also enroll in one of the lab sections, PHYS& 114 LA, LB or LC.

Lab Fee: \$14.40

**PHYS& 114 GENERAL PHYSICS I—LAB**

4895 LA	0	T	9:00a.m.-11:00a.m.	HSB 137	LIVINS P
4900 LB	0	T	11:00a.m.-1:00p.m.	HSB 137	LIVINS P
4905 LC	0	ARR	ARR	HSB 137	LIVINS P

**PHYS& 221 ENGINEERING PHYSICS I****NSL**

▽ 4910 A	5	MWF	10:00a.m.-11:15a.m.	HSB 137	LIVINS P
----------	---	-----	---------------------	---------	----------

Students must also enroll in one of the lab sections, PHYS& 221 LA, LB or LC.

Lab Fee: \$14.40

**PHYS& 221 ENGINEERING PHYSICS I—LAB**

4915 LA	0	T	1:00p.m.-3:00p.m.	HSB 137	LIVINS P
4920 LB	0	Th	1:00p.m.-3:00p.m.	HSB 137	LIVINS P
4925 LC	0	ARR	ARR	HSB 137	LIVINS P

## Political Science

**POLS& 101 INTRODUCTION TO POLITICAL SCIENCE****SS**

4940 A	5	MW	9:00a.m.-11:00a.m.	MAN 234	QUIRK A
--------	---	----	--------------------	---------	---------

Ⓢ Uses Alternative Educational Resources.

**POLS& 202 AMERICAN GOVERNMENT****SS**

4945 A	5	MW	1:20p.m.-3:20p.m.	MAN 234	VAUGHN C
4950 B	5	TTh	9:00a.m.-11:00a.m.	MAN 234	STAFF

## Process Manufacturing

**PMFG 150 ELECTRICAL AND ELECTRONIC FUNDAMENTALS**

4930 A	6	MTWTh	3:20p.m.-5:00p.m.	VOC 112	JOINER T
--------	---	-------	-------------------	---------	----------

## EVENING CLASSES

**PMFG 151 PROCESS CONTROL EQUIPMENT**

4935 N	5	MW	5:15p.m.-7:15p.m.	VOC 151	JOINER T
--------	---	----	-------------------	---------	----------

## Course # Course Name

Item#	Sec.#	Cred.#	Days	Time	Place	Instructor
-------	-------	--------	------	------	-------	------------

## Psychology

**PSYC& 100 GENERAL PSYCHOLOGY****SS**

4980 A	5	MW	9:00a.m.-11:00a.m.	MAN 235	WEAVER N
--------	---	----	--------------------	---------	----------

Ⓢ Uses Alternative Educational Resources.

5005 B	5	TTh	9:00a.m.-11:00a.m.	MAN 233	STRAYER M
--------	---	-----	--------------------	---------	-----------

Ⓢ Uses Alternative Educational Resources.

4985 C	5	MW	11:10a.m.-1:10p.m.	MAN 235	WEAVER N
--------	---	----	--------------------	---------	----------

Ⓢ Uses Alternative Educational Resources.

4995 DE	5	ARR	ARR	ARR	TUCKER J
---------	---	-----	-----	-----	----------

Online class.

5000 DE1	5	ARR	ARR	ARR	TUCKER J
----------	---	-----	-----	-----	----------

Online class.

4990 E	5	MW	1:20p.m.-3:20p.m.	MAN 235	STRAYER M
--------	---	----	-------------------	---------	-----------

Ⓢ Uses Alternative Educational Resources.

5885 IS	5	MTWTh	9:00a.m.-11:10a.m.	GYM 212	HAYES B
---------	---	-------	--------------------	---------	---------

Students must enroll in PSYC 100 IS, #5885 and NUTR& 101 IS, #4680, for a total of 10 credits. Ⓢ Uses Alternative Educational Resources.

**PSYC& 200 LIFESPAN PSYCHOLOGY****SS**

5015 A	5	MW	9:00a.m.-11:00a.m.	MAN 233	STRAYER M
--------	---	----	--------------------	---------	-----------

5020 DE	5	ARR	ARR	ARR	RICHE G
---------	---	-----	-----	-----	---------

Online class.

**EVENING CLASSES****PSYC& 100 GENERAL PSYCHOLOGY****SS**

5010 N	5	T	5:30p.m.-7:45p.m.	HSB 104	TUCKER J
--------	---	---	-------------------	---------	----------

Hybrid class; partially online.

**PSYC& 200 LIFESPAN PSYCHOLOGY****SS**

5025 N	5	TTh	5:30p.m.-7:45p.m.	HSB 123	CROMWELL L
--------	---	-----	-------------------	---------	------------

## Sociology

**SOC& 101 INTRODUCTION TO SOCIOLOGY:DIV****D,SS**

5050 A	5	TTh	11:00a.m.-1:10p.m.	MAN 235	WEAVER N
--------	---	-----	--------------------	---------	----------

Ⓢ Uses Alternative Educational Resources.

5055 B	5	MWF	9:00a.m.-10:25a.m.	MAN 145	BATEY T
--------	---	-----	--------------------	---------	---------

Ⓢ Uses Alternative Educational Resources.

5060 DE	5	ARR	ARR	ARR	TATE J
---------	---	-----	-----	-----	--------

Online class.

## Spanish

All DE sections are online, using Maestro and email communication with the instructor. A Distance Education fee will be charged.

After registering, students must contact Alex Emerson at aemerson@lowercolumbia.edu or 360.442.2638 or AAR 152.

All sections of SPAN& 121, 122 and 123 satisfy the Diversity requirement.

**SPAN& 121 SPANISH I:DIV****D,H**

5075 A	5	DAILY	8:00a.m.-8:50a.m.	AAR 104	EMERSON A
--------	---	-------	-------------------	---------	-----------

5085 B	5	DAILY	10:00a.m.-10:50a.m.	AAR 104	EMERSON A
--------	---	-------	---------------------	---------	-----------

5090 DE	5	ARR	ARR	ARR	EMERSON A
---------	---	-----	-----	-----	-----------

**SPAN& 122 SPANISH II:DIV****D,H**

5100 DE	5	ARR	ARR	ARR	EMERSON A
---------	---	-----	-----	-----	-----------

**SPAN& 123 SPANISH III:DIV****D,H**

5110 DE	5	ARR	ARR	ARR	EMERSON A
---------	---	-----	-----	-----	-----------

**SPAN& 221 SPANISH IV****H**

5115 DE	5	ARR	ARR	ARR	EMERSON A
---------	---	-----	-----	-----	-----------

**SPAN& 222 SPANISH V****H**

5120 DE	5	ARR	ARR	ARR	EMERSON A
---------	---	-----	-----	-----	-----------

**SPAN& 223 SPANISH VI****H**

5125 DE	5	ARR	ARR	ARR	EMERSON A
---------	---	-----	-----	-----	-----------

## Technology

**TECH 100 ADVANCED PRINCIPLES OF TECHNOLOGY****NS**

5220 A	5	TTh	1:20p.m.-3:20p.m.	VOC 115	GERICK J
--------	---	-----	-------------------	---------	----------

## Welding Technology

A \$13.00 per-credit fee to a maximum of \$130 is charged for each welding class.

**WELD 060 WABO EXAM PREP**

5233 MM	1	ARR	ARR	ARR	BYRUM R
---------	---	-----	-----	-----	---------

**WELD 105 RELATED WELDING I**

Ⓢ Course is clustered with other class sections that meet at the same time, in the same classroom.

5335 A	6	DAILY	8:00a.m.-11:00a.m.	VOC 161	BYRUM R
--------	---	-------	--------------------	---------	---------

5340 B	1- 6	MWF	8:00a.m.-11:00a.m.	VOC 161	BYRUM R
--------	------	-----	--------------------	---------	---------

5345 C	1- 6	MWF	1:00p.m.-4:00p.m.	VOC 161	BYRUM R
--------	------	-----	-------------------	---------	---------

Receive Emergency Text Alerts from LCC  
[lowercolumbia.edu/alerts](http://lowercolumbia.edu/alerts)



## Course # Course Name

Item#	Sec.#	Cred.#	Days	Time	Place	Instructor
-------	-------	--------	------	------	-------	------------

**WELD 151 INTRODUCTION TO OXY ACETYLENE**

⊗ Course is clustered with other class sections that meet at the same time, in the same classroom.

▽ 5370 A	6	DAILY	8:00a.m.-11:00a.m.	VOC 161	BYRUM R
▽ 5375 B	1- 6	MWF	8:00a.m.-11:00a.m.	VOC 161	BYRUM R
▽ 5380 C	1- 6	MWF	1:00p.m.-4:00p.m.	VOC 161	BYRUM R

**WELD 152 INTRODUCTION TO ARC WELDING**

⊗ Course is clustered with other class sections that meet at the same time, in the same classroom.

▽ 5400 A	10	DAILY	8:00a.m.-11:00a.m.	VOC 161	BYRUM R
▽ 5405 B	1- 8	MWThF	8:00a.m.-11:00a.m.	VOC 161	BYRUM R
▽ 5410 C	1- 6	MWF	1:00p.m.-4:00p.m.	VOC 161	BYRUM R

**WELD 221 WIRE MACHINE**

⊗ Course is clustered with other class sections that meet at the same time, in the same classroom.

▽ 5430 A	10	DAILY	8:00a.m.-11:00a.m.	VOC 161	BYRUM R
▽ 5435 B	6	MWF	8:00a.m.-11:00a.m.	VOC 161	BYRUM R
▽ 5440 C	6	MWF	1:00p.m.-4:00p.m.	VOC 161	BYRUM R

**WELD 222 ADVANCED WIRE MACHINE**

⊗ Course is clustered with other class sections that meet at the same time, in the same classroom.

▽ 5460 A	6	MWF	8:00a.m.-11:00a.m.	VOC 161	BYRUM R
▽ 5465 B	6	MWF	8:00a.m.-11:00a.m.	VOC 161	BYRUM R
▽ 5470 C	6	MWF	1:00p.m.-4:00p.m.	VOC 161	BYRUM R

**WELD 254 ARC WELDING**

⊗ Course is clustered with other class sections that meet at the same time, in the same classroom.

▽ 5490 A	10	DAILY	8:00a.m.-11:00a.m.	VOC 161	BYRUM R
▽ 5495 B	1- 8	MWThF	8:00a.m.-11:00a.m.	VOC 161	BYRUM R
▽ 5500 C	1- 6	MWF	1:00p.m.-4:00p.m.	VOC 161	BYRUM R

**WELD 255 ADVANCED WELDING PROCESSES**

⊗ Course is clustered with other class sections that meet at the same time, in the same classroom.

▽ 5520 A	10	DAILY	8:00a.m.-11:00a.m.	VOC 161	BYRUM R
▽ 5525 B	1- 8	MWThF	8:00a.m.-11:00a.m.	VOC 161	BYRUM R
▽ 5530 C	1- 6	MWF	1:00p.m.-4:00p.m.	VOC 161	BYRUM R

**WELD 256 ADVANCED WELDING APPLICATION**

⊗ Course is clustered with other class sections that meet at the same time, in the same classroom.

▽ 5550 A	10	DAILY	8:00a.m.-11:00a.m.	VOC 161	BYRUM R
▽ 5555 B	1- 8	MWThF	8:00a.m.-11:00a.m.	VOC 161	BYRUM R
▽ 5560 C	1- 6	MWF	1:00p.m.-4:00p.m.	VOC 161	BYRUM R

**WELD 299 INDEPENDENT STUDY**

5590 A 1-10 ARR ARR ARR WELD FACULTY  
Instructor permission required to enroll.

## EVENING CLASSES

**WELD 105 RELATED WELDING I**

⊗ Course is clustered with other class sections that meet at the same time, in the same classroom.

5355 NA 2	Th	6:00p.m.-9:00p.m.	VOC 161	MILLER R
5360 NB 2	T	6:00p.m.-9:00p.m.	VOC 161	MILLER R
5365 NC 2	W	6:00p.m.-9:00p.m.	VOC 161	MILLER R

**WELD 151 INTRODUCTION TO OXY ACETYLENE**

⊗ Course is clustered with other class sections that meet at the same time, in the same classroom.

5385 NA 2	Th	6:00p.m.-9:00p.m.	VOC 161	MILLER R
5390 NB 2	T	6:00p.m.-9:00p.m.	VOC 161	MILLER R
5395 NC 2	W	6:00p.m.-9:00p.m.	VOC 161	MILLER R

**WELD 152 INTRODUCTION TO ARC WELDING**

⊗ Course is clustered with other class sections that meet at the same time, in the same classroom.

5415 NA 2	Th	6:00p.m.-9:00p.m.	VOC 161	MILLER R
5420 NB 2	T	6:00p.m.-9:00p.m.	VOC 161	MILLER R
5425 NC 2	W	6:00p.m.-9:00p.m.	VOC 161	MILLER R

**WELD 221 WIRE MACHINE**

⊗ Course is clustered with other class sections that meet at the same time, in the same classroom.

5445 NA 2	Th	6:00p.m.-9:00p.m.	VOC 161	MILLER R
5450 NB 2	T	6:00p.m.-9:00p.m.	VOC 161	MILLER R
5455 NC 2	W	6:00p.m.-9:00p.m.	VOC 161	MILLER R

**WELD 222 ADVANCED WIRE MACHINE**

⊗ Course is clustered with other class sections that meet at the same time, in the same classroom.

5475 NA 2	Th	6:00p.m.-9:00p.m.	VOC 161	MILLER R
5480 NB 2	T	6:00p.m.-9:00p.m.	VOC 161	MILLER R
5485 NC 2	W	6:00p.m.-9:00p.m.	VOC 161	MILLER R

**WELD 254 ARC WELDING**

⊗ Course is clustered with other class sections that meet at the same time, in the same classroom.

5505 NA 2	Th	6:00p.m.-9:00p.m.	VOC 161	MILLER R
5510 NB 2	T	6:00p.m.-9:00p.m.	VOC 161	MILLER R
5515 NC 2	W	6:00p.m.-9:00p.m.	VOC 161	MILLER R

**WELD 255 ADVANCED WELDING PROCESSES**

⊗ Course is clustered with other class sections that meet at the same time, in the same classroom.

5535 NA 2	Th	6:00p.m.-9:00p.m.	VOC 161	MILLER R
5540 NB 2	T	6:00p.m.-9:00p.m.	VOC 161	MILLER R
5545 NC 2	W	6:00p.m.-9:00p.m.	VOC 161	MILLER R

**WELD 256 ADVANCED WELDING APPLICATION**

⊗ Course is clustered with other class sections that meet at the same time, in the same classroom.

5565 NA 2	Th	6:00p.m.-9:00p.m.	VOC 161	MILLER R
5570 NB 2	T	6:00p.m.-9:00p.m.	VOC 161	MILLER R
5575 NC 2	W	6:00p.m.-9:00p.m.	VOC 161	MILLER R

**WELD 299 INDEPENDENT STUDY**

5600 NA 1-10 Th 6:00p.m.-9:00p.m. ARR MILLER R  
Instructor permission required to enroll.  
5605 NB 1-10 T 6:00p.m.-9:00p.m. ARR MILLER R  
Instructor permission required to enroll.  
5610 NC 1-10 W 6:00p.m.-9:00p.m. ARR MILLER R  
Instructor permission required to enroll.

## Adult Basic Education

Adult Basic Education offers students who are 16 years or older the opportunity to improve their reading, writing, oral communication, critical thinking, technology and math skills so they can move through college and into high-demand jobs. Students can brush up on their basic skills in preparation for college-level courses or technical training, complete their high school diploma, or prepare for the General Education Development (GED®).

Classes are \$25 per quarter and students may enroll at any time. Skills assessment is required for initial placement. Students 16-18 need a signed release from their high school district office. For more information, call 360.442.2580.

### Longview ABE Classes

#### Lower Columbia College (15th Avenue, Vocational Building)

Daily	9:00 a.m.-9:50 a.m.
	10:00 a.m.-10:50 a.m.
	11:00 a.m.-11:50 a.m.
	12:00 p.m.-12:50 p.m.
	1:00 p.m.-1:50 p.m.
	2:00 p.m.-2:50 p.m.
Mon-Thurs	5:00 p.m.-5:50 p.m.
	6:00 p.m.-7:00 p.m.

#### HS 21+ Portfolio & GED Fast Track (15th Avenue, Applied Arts 101)

*Intensive, individualized instruction.*

Tues/Thurs	12:00 p.m.-12:50 p.m.
Mon-Thurs	6:00 p.m.-8:50 p.m.

### Woodland ABE Classes

#### Woodland Primary School (600 Bozarth Avenue, Woodland)

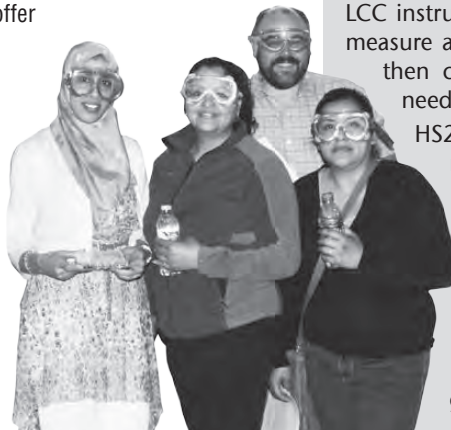
Tues & Thurs 6:00 p.m.-9:00 p.m.

### I-BEST Job Training

Do you need better reading, writing, mathematics, English or study skills to move up to a better job? I-BEST career training programs offer extra help for ABE and ESL students. See page 10.

### High School 21+

High School 21+ is for students who want to finish their high school diploma and prepare for college or career at an affordable price. Both day and evening classes are available. For more information, call 360.442.2580.



## English as a Second Language

English as a Second Language offers students who are 16 years or older the opportunity to improve their reading, writing, oral communication, critical thinking and technology skills so they can transition to Adult Basic Education classes, through college programs and into high-demand jobs. Students can improve their basic skills, earn credits toward their high school diploma, or prepare for the General Education Development (GED®).

Classes are \$25 per quarter and students may enroll at any time. Skills assessment is required for initial placement. Students 16-18 need a signed release from their high school district office. For more information, call 360.442.2580.

### Longview ESL Classes

#### Lower Columbia College (15th Avenue, Vocational Building)

Daily	9:00 a.m.-10:50 a.m.
Mon-Thurs	7:00 p.m.-9:00 p.m.

#### Broadway School (8th Avenue and Broadway)

Tues-Thurs 9:00 a.m.-10:55 a.m.

### Woodland ESL Classes

#### Woodland Primary School (600 Bozarth Avenue, Woodland)

Mon & Wed 6:00-9:00 p.m.

## LCC Offers High School Diploma Program For Adults

Adults, age 21 and older, have a low-cost option to earn a high school diploma through a program now available at Lower Columbia College. The HS21+ program is a comprehensive, competency-based approach tailored to adult learning styles, with both day and evening classes on campus and in the community.

Students earn credit toward a high school diploma both through classroom studies and by demonstrating knowledge gained in the workplace, life experiences and military service. Previous high school and college studies also count.

LCC instructors and staff assess students' experiences to measure any gaps in education and work readiness and then create a plan to help them complete studies needed for their diploma.

HS21+ students are eligible for the Basic Skills tuition rate of \$25 per quarter for classes needed to earn a diploma. Students may begin studies at any time. To get started, contact the Transitional Studies Department at 360.442.2580.

LCC began offering the HS21+ program in Summer 2013. Since then, over 300 students have completed studies to graduate with their high school diploma. Even better, many graduates have continued on to college studies.



# CORPORATE AND CONTINUING EDUCATION

Corporate and Continuing Education at Lower Columbia College assists individuals and business/industry to meet their personal, professional and corporate education and training needs by offering non-credit classes to the community. These classes are offered both on-site and online, to accommodate the needs of our students.



*The holiday season is here! Create your own cards, make a unique gift, wrap it all up in a special box you created, make some yummy sweet treats... It's time to celebrate!*

## **College of Collage:**

### **Create Holiday Gifts, Cards, and More!**

Learn to create holiday greeting cards, refrigerator magnets, wearable art, and unique gift boxes as you experience the endless creative possibilities of collage. Few art methods allow such flexibility and personal narrative. This course will cover techniques for determining subject matter, integrating a variety of materials and personalizing imagery. We will learn about adhesives, surfaces, and combinations of drawing and painting materials used in collage. MAN 109 (Wade) \$79

CLCE 031 A 8085 T 9/19-11/14 5-7 p.m.

### **Mixed Media Drawing-NEW**

Discover drawing with a variety of materials and surfaces. Create finished products such as unique gift boxes, greeting cards, and more. We'll work with both dry and water-based materials, on surfaces ranging from paper to glass. Investigate techniques for creating representational and abstract imagery with pen and ink, watercolor pencils, colored pencils, pastels, glass paints, and unconventional tools. For those who enjoy drawing, this course will expand your tool box of possibilities. Whether you are an experienced artist or someone wanting to explore your creative side, this class is for you! MAN 109 (Wade) \$79

CLCE 018 C 8095 Th 9/21-11/16 5-7 p.m.

### **Cake Pops-NEW**

Make something fun for the fall holidays! This class is designed to enhance the student's experience with cake pops beginning with making the pops, inserting the sticks, and decorating with many different techniques. Learn to melt the candy, dip the cake pops, decorate, and add embellishments. Supply list will be provided to students prior to class. DTV 201 (Studer) \$25

CLCE 020 B 8111 Th 10/19 5:30-8:30 p.m.

### **Cupcake Basics-NEW**

This project class is designed to introduce students to the basics of decorating. You'll learn some fun and easy techniques and how to apply these skills to treats including the Wilton Method of cake decorating. Discover how to use decorating tips and what you can do with them. Combine different techniques to design treats. Supply list will be provided to students prior to class. DTV 201 (Studer) \$19

CLCE 020 C 8112 Th 11/2 6-8 p.m.

## **Holiday Centerpieces-NEW**

Holiday centerpieces are simple and inexpensive to make. You can brighten any room for the holidays (or year round!) often using supplies you have on hand. Learn the essential rules for building your own centerpieces in this hands-on class, and create a finished project to take home. A suggested supply list will be provided to students prior to class. DTV 201 (Amundson) \$29

CLCE 013 A 8060 Sa 10/21 8:30-11:30 a.m.

## **Homemade Holidays for Kids-NEW**

There's nothing quite as thoughtful as receiving a homemade gift for the holidays, especially something made by a child! Pre-register and bring your kids to LCC after school is released on December 20<sup>th</sup> and let them spend the afternoon creating homemade gifts. Kids will be able to choose from different stations making ornaments, snowflakes, trees, snowmen, and more! A perfect way to begin winter break. Grades 2-5. DTV 201 (Staff) \$59

CLCE 025 A 8135 W 12/20 12:30-5 p.m.



## Business & Professional Development

LCC offers a variety of services supporting workforce development and customized training through the Workforce & Continuing Education Department. Working with area businesses, industries and agencies, LCC offers WorkKeys profiling and assessment services to provide employers, employees and job seekers with direct information regarding the skills needed to succeed in various jobs.

Employees and job seekers can document skill proficiency by taking the three assessments on the National Career Readiness Certificate (NCRC) – Applied Mathematics, Reading for Information and Locating Information. The NCRC is a portable, evidence-based credential that certifies essential skills needed for workplace success.

Support for companies looking for specialized training is also available. LCC frequently works with employers to provide or arrange customized training in a variety of areas, including job-specific Spanish language courses, quality assurance, business computer applications, customer service, and other areas critical to organizational success.

### Grant Writing Basics

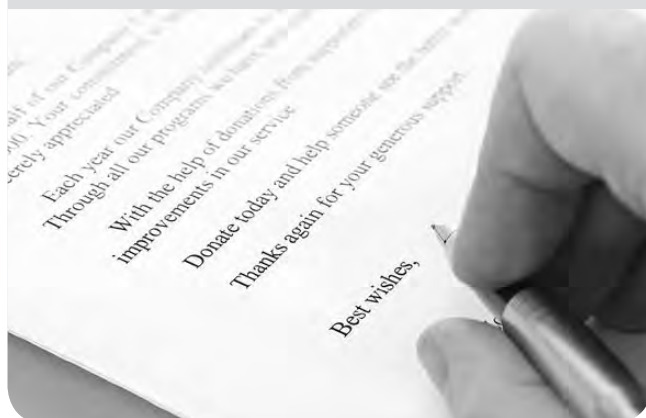
Do you want to earn more grants for your organization? This course will cover the elements of a grant proposal, budget development and providing evaluation and metrics to measure the impact of your project on your community. The presentation includes ample time for questions/answers and audience discussion. DTV 201 (Palmer) \$59

CLCE 042 A 8325 Th 10/5 8 a.m.-12 p.m.

### Fundraising Basics

This course focuses on the elements of developing a plan for long-term fundraising. It covers the role of the nonprofit boards of trustees in fundraising success. Students will learn about strategies and tools common to fundraising. A variety of fundraising techniques will be discussed, from crowd-sourcing to special events, from direct donations to grant proposals. You will learn how to provide evaluation and metrics to measure the success of your fundraising from year-to-year. The presentation includes ample time for questions/answers and audience discussion. DTV 201 (Palmer) \$59

CLCE 042 B 8326 Th 10/12 8 a.m.-12 p.m.



### Lean Enterprise Certification

The Lean Enterprise Certificate Program arms participants with demonstrated understanding of the Lean Body of Knowledge and provides them hands on practice applying Lean tools and strategies. Participants get 7 days of instruction spaced approximately two weeks apart and include the SME exam day. In addition the program:

- Provides Lean training and experience to those individuals who then can play the roles of “Lean Champions” for their organizations with a curriculum comprised of 32 hours of classroom and 24 hours of project application. Participants earn a certificate of completion.
- The training is combined with tours of local companies employing best practices in order to demonstrate Lean techniques in practice.
- Participants receive and must read the following texts: Lean Thinking by James Womack and Daniel Jones, Gemba Kaizen by Masaaki Imai, Lean Production Simplified by Pascal Dennis and Learning to See by Mike Rother and John Shook. An additional text, Toyota Kata, by Mike Rother is also included. In addition, instructional manuals that reflect the classroom presentations will be provided.

A three-hour test from the Society of Manufacturing Engineers based on the instructional material and the required texts is administered at the end of the course. This certified test completion along with additional project hours can be applied towards a Bronze Level Certification, and career progression for silver and gold certification (listed at [www.sme.org](http://www.sme.org)). DTV 201 (Impact Washington) \$1,995

MFG 050 A 8850 W

Class days: September 13, 27;  
October 11, 25; November 8, 29

Test day: December 6



### Small Business Entrepreneur Certification-ONLINE

The Small Business Development Center and Lower Columbia College are partnering to offer a Small Business Entrepreneur Certification. Contact Jerry Petrick at the Longview Small Business Development Center at [jerry.petrick@wsbdc.org](mailto:jerry.petrick@wsbdc.org) or call 360.578.5449. Additional information is also available by calling LCC Corporate and Continuing Education at 360.442.2601 or 360.442.2602. Visit [www.campusce.net/lcc](http://www.campusce.net/lcc) for more information.

### Workplace Conflict Solutions Certificate-ONLINE- NEW

In today's business environment, employers expect employees to have a solid set of interpersonal skills. The ability to solve problems quickly and effectively is a critical interpersonal skill well worth developing. Register at [www.yougotclass.org/catalog.cfm/LCC](http://www.yougotclass.org/catalog.cfm/LCC) \$495

Courses included:

- Creative Problem Solving
- Dealing with Difficult People in the Workplace
- Female Bullying in the Workplace

Visit our UGotClass Online training catalog  
for a complete list of courses at  
[www.yougotclass.org/catalog.cfm/LCC](http://www.yougotclass.org/catalog.cfm/LCC)

## Workforce Training

### MSSC Certified Production Technician (CPT)

Mastering the four elements of the Manufacturing Skill Standards Council (MSSC), CPT brings real value to the table. This program prepares participants to be productive team members in a manufacturing environment. Instruction includes manufacturing processes and production, maintenance, safety and quality control. Participants demonstrate their understanding of the core skills and knowledge through four assessments based upon MSSC's industry-defined, nationally validated skill standards. Both entry-level and incumbent workers are offered the opportunity to demonstrate that they have acquired the skills increasingly needed in the technology-intensive jobs of the 21st century. To learn more about the CPT contact Hahli Clark, 360.442.2611 or hclark@lowercolumbia.edu.

### Flagger Certification

Learn professional flagging techniques and proper work zone set-up in accordance with standards and guidelines of the Federal Manual on Uniform Traffic Control Devices (MUTCD), Washington Modifications to the MUTCD, L & I WAC 296-155-305, and WSDOT State Standard Specifications. Upon successful completion, receive both the Washington State Department of Transportation (WSDOT) and American Traffic Safety Services Association (ATSSA) flagger cards (accepted in most other states) valid for 3 years. Fee includes textbook and ID cards. Rich Bunker, Master Instructor, for American Traffic Safety Services Association (ATSSA). Students must bring a photo ID to class. \$75

For more information or to register, please contact Mary Harris at 360.442.2602 or mharris@lowercolumbia.edu. Call or email for a current schedule. Flagger Re-Certification also available.

### CDL Training

LCC's Corporate & Continuing Education Department offers a CDL training course for Class A and Class B licenses.

The CDL Program has the option of 4 or 8 week training course depending on the quarter. The training consists of 20-40 hours of classroom instruction and 28-120 hours of driving and vehicle instruction based on the class of the license. Training is limited to students that meet the program requirements. For more information, contact Heidi Hamer at 360.442.2603 or hhamer@lowercolumbia.edu.

### Professional Vocational Relationships: Canvas Online

Examines the legal and regulatory frameworks of practical nursing. Presents concepts of effective communication in health care settings among employees and employers. Explores conflict resolution and teamwork strategies. Discusses professional boundaries, stress management, chain of command, and professionalism as it relates to the licensed practical nurse role and scope. This course fulfills the Washington State requirements for professional relationship content for those applying for licensure as a practical nurse in Washington State. Registration required. Online using Canvas. May start any time prior to November 17, 2017. (Ward) \$125. For more information, please contact Heidi Hamer at 360.442.2603 or hhamer@lowercolumbia.edu.

CLCG 050 A 8980 Online

### Nurse Delegation/Nurse Delegation Diabetes

A self-study training course for Nursing Assistants who will accept and perform tasks delegated by a Registered Nurse (RN). For more information, please contact: Mary Harris at 360.442.2602 or mharris@lowercolumbia.edu.

### HIV/AIDS Education for Health Care Providers

LCC offers both 4 and 7-hour HIV/AIDS certification that meets Washington Department of Health Professional Licensing requirements. Follow these steps to take your course: register in Admissions, purchase your text in the College Bookstore, and check out the DVDs in the LCC College Library. Complete instructions are included in your text. Contact Mary Harris, 360.442.2602 or mharris@lowercolumbia.edu, for additional information.

4 hour HIV/AIDS Certification, register for:

SFTY 046 5035 \$40.00

7 hour HIV/AIDS Certification, register for:

SFTY 045 5030 \$65.00



## ENGAGE YOUNG MINDS

Corporate and Continuing Education offers classes and workshops throughout the year to engage your children in fun educational experiences. Register online at [lowercolumbia.edu/ce](http://lowercolumbia.edu/ce) and click on the shopping cart feature or call 360.442.2840.



## Family STEM Night on September 22!

What's in your future? Family STEM Night is a free evening for parents and children to discover more about STEM principles. Families learn about what STEM is and engage in fun, hands-on activities led by professionals who work in careers focused on science, technology, engineering, and math. No registration required. (LCC Student Center)

### STEAM Workshop for Middle School Students

LCC partners with faculty to provide exceptional quarterly outreach workshops. We will be working hard this summer to plan topics and activities for next school year. Check our website for more information at [lowercolumbia.edu/ce](http://lowercolumbia.edu/ce) or call 360.442.2840.



## About Corporate and Continuing Education

For the latest information about Continuing Education, see [lowercolumbia.edu/ce](http://lowercolumbia.edu/ce) or visit us on Facebook at "Lower Columbia College Continuing Education."

### It's easy to sign up for classes:

- Sign up online at [lowercolumbia.edu/ce](http://lowercolumbia.edu/ce)
- OR call 360.442.2840 or 360.442.2602 to sign up over the phone with a Visa or a MasterCard. If we are away from the phone, please leave your name and return phone number on our voicemail and we will call you back.
- OR fill out the form at the back of this schedule and mail it to us with a check, money order, or credit card information
- OR fax the form to 360.442.2609 with credit card info.

### Questions? Call us!

Continuing Education: 360.442.2840 or 360.442.2602  
Business & Workforce Training:  
360.442.2601 or 360.442.2611  
Caregiving: 360.442.2602

### Refund Policy:

Written notice must be received 3 business days prior to the course start date in order to receive a refund on courses you have enrolled in. Refunds will be issued automatically if a course is closed or cancelled.

### Continuing Education Online:

We offer online, short-term, non-credit courses for personal or professional development. To register for any of these classes or to view more course listings, in addition to the ones we have listed throughout, go to the provider websites listed below. Our online providers include:

#### ■ ED2GO –

[www.ed2go.com/lccbic](http://www.ed2go.com/lccbic)

The Ed2go online instruction center is the leader in online learning for adults, providing quality online continuing education courses geared for you! These 6-week, highly interactive classes start the third Wednesday of each month. Most require only Internet access and an email account. Choose from Career & Professional, Computers & Technology, Personal Development, Writing & Publishing, and more!

#### ■ GATLIN EDUCATION SERVICES

[www.gatlineducation.com/lccbic](http://www.gatlineducation.com/lccbic)

LCC, in partnership with Gatlin Education Services (GES), offers online open-enrollment programs designed to provide skills necessary to acquire professional level positions for many in-demand occupations. These programs are developed by a team of professionals from each field. Instructors/mentors are actively involved in your learning experience, responding to questions or concerns and encouraging and motivating students to succeed.

Areas of interest include: Healthcare & Fitness, Business & Professional, IT & Software Development, Management & Corporate, Media & Design, Hospitality & Gaming, Skilled Trades & Industrial, Sustainable Energy & Going Green, and more!

## Online Learning



Learn More

Ed2go has over 300 instructor-facilitated online courses to choose from. Through well-crafted lessons, expert online instruction, and interaction with fellow students, you gain valuable knowledge at your convenience. Online continuing education courses begin each month and continue for six weeks. You can complete any course wherever you have internet access, any time of the day or night! Most courses are \$99. Register at [www.ed2go.com/lccbic](http://www.ed2go.com/lccbic) or call 360.442.2602 for more info.

### SAT/ACT Prep Series

This series will prepare you to excel in all sections of the undergraduate college entrance exams. Save \$24 by taking the series! Individual courses run \$99. \$174.

### GMAT Preparation

Discover powerful test-taking techniques and methods for improving your score on the GMAT. \$99

### GRE Prep Series

With GRE Preparation – Part 1 and Part 2, you'll be prepared for all aspects of the computerized GRE® revised General Test. Save \$24 by taking the series! Individual courses run \$99. \$174.

### LSAT Preparation - Part 1

Learn about law school entrance procedures, developing analytical reasoning skills, and improving your test-taking skills (course 1 of 2). Part 2 also available. \$99

### Certificate in Mindfulness

(8 contact hours) In the Certificate in Mindfulness, you'll learn about mindfulness and meditation, mindfulness and happiness, mindful eating, mindful movement (walking, yoga, Tai Chi, and Qigong), and mindful relationships. \$99

### Certificate in Brain Health

(10 contact hours) In this innovative certificate program, you'll gain insights into the amazing brain and learn how to support health and happiness through lifestyle choices that impact this remarkable organ. \$66

### Certificate in Healthy Aging

(10 contact hours) Gain an overview of aging, including the impact of nutrition and physical activity, changes in the healthy aging brain, and the role of sexuality in healthy aging. \$65

### Certificate in Stress Management

(14 contact hours) Explore the physiological, social, and psychological impacts of stress and study modalities to get stress under control. \$99

### Certificate in Food, Nutrition, and Health

(16 contact hours) In this certificate program, you'll gain a holistic overview of current food and nutrition issues and their impact on physical, social, emotional, and spiritual health. \$99

### Certificate in Holistic and Integrative Health: Foundations 1

(14 contact hours) This certificate program focuses on foundational concepts in holistic and integrative health, including stress management, physical activity and movement, nutrition, and healing environments. \$120



## Art & Culture

### Painting Techniques

Gain control of the art of painting. We will take painting from palette layout to finished works through the investigation of tools, material handling, color mixing, and traditional techniques. The class is designed for those who are embarking on painting as well as those with experience who want to refine their skills and techniques. Although acrylics will be preferred, students with experience who work in oils are encouraged to use that medium. MAN 109 (Wade) \$99

CLCE 018 B 8090 W 9/20-11/15 5-8 p.m.

*Check out our  
College of Collage and  
Mixed Media Drawing  
classes featured  
on page 37*

### Metal Art

This class will inspire you to find scraps and assist you in exploring different techniques to express your creative side. You will review safety and welding techniques and develop an understanding of different materials and how to manipulate them. You will explore different forms of metal sculptures and even produce a work of your own art by class end. Previous welding experience is preferred, work at your own pace. LCC Welding Shop (Staff) \$99

CLCE 019 A 8105 M 9/18-11/13 6-8 p.m.

### Community Choir

Every voice matters in this class of community members. Participate and harmonize with peers as you expand and develop your vocal range. You will also have the opportunity to perform in the Rose Center! RCA 102 (Challed)

CLCE 021 A 8115 M 9/18-11/27 7-9 p.m.

### Symphonic Band

Non-credit section for community members. Offers rehearsal and performances of standard concert band repertoire. Activities of this college/community band include performances for special civic events in community and public concerts. Instructor approval is required to enter this course. RCA 102 (Davis)

CLCE 023 A 8125 Th 9/21-11/30 7-9 p.m.



*Check out our  
Cake Pops and Cupcake  
Basics classes featured  
on page 37*

## Cake Decorating

### Building Buttercream Skills-NEW

Build buttercream skills you can use for decorating projects from cupcakes to cakes for any occasion! Whether you are new to decorating or have been decorating for years, this class will teach you new techniques that you can showcase on your next project from making icing to finishing off sweet treats. Learn and practice making borders and flowers using multiple tips and complete a finished product. Purchase Wilton Course 1 kit and student guide available from local retailers prior to first class. DTV 201 (Steder) \$45

CLCE 020 A 8110 Th 9/21-9/28 5:30-8:30 p.m.

### Introduction to Wired Gum Paste Flowers-NEW

This class features the key skills and techniques needed to create beautiful wired gum paste flowers. Learn the basics of gum paste handling and storage. Learn to use the necessary tools for wired flowers including cutouts, tape, and wires. Learn to construct and assemble life-like flowers. Supply list will be emailed to students prior to class. DTV 201 (Steder) \$39

CLCE 020 D 8113 Th 11/30-12/7 5:30-8 p.m.

## Travel & Outdoors



### Mt. Angel Oktoberfest

Oregon's oldest and best loved Oktoberfest began in 1966 as a traditional harvest to celebrate all the land had to offer. It is now one of the largest folk festivals around! With over 50 Alpine food chalets serving a variety of food, traditional Biergarten, Weingarten and Alpinegarten, old world glockenspiel performances, and a huge arts and crafts show! Transportation to and from event is included; food and beverage purchase on your own. (Wade) \$35

CLCE 038 A 8550 F 9/15 9 a.m.-5 p.m.

### Explore Hood River

Hood River, Oregon is nestled at the crossroads of the Columbia River Gorge and the Cascade Range surrounded by breathtaking scenery. Historic buildings line the scenic downtown streets with a bustling shopping district featuring boutiques, antique shops, art galleries, and more than 30 restaurants. On the way into Hood River, we'll make a stop at the magnificent Multnomah Falls, a 611 foot tall roaring and awe inspiring cascade of water! Bring a friend and explore Hood River together! Transportation to and from Hood River will be provided. (Wade) \$35

CLCE 038 B 8555 Sa 10/7 9 a.m.-5 p.m.



## Computers & Technology

### Computer Basics 1

Create a foundation by learning basic skills that can be used with the Windows software. Learn to create, save and open simple documents and files. The instructor will help you feel comfortable with practice, repetition and clear understandable instructions. He will also be able to answer the questions about computers that you never understood and didn't know how to ask. AAR 109E (Gaither) \$39

CLCE 001 A 8000 TTh 9/19-10/5 4:30-6 p.m.

### Computer Basics 2

This class emphasizes file management. Be more productive; make folders, move and organize files, and find lost files. Learn keyboard shortcuts, basic computer maintenance and new Windows skills. We will also learn to create basic Word and Excel documents. Basic computer skills or Computer Basics required. AAR 109E (Gaither) \$39

CLCE 002 A 8005 TTh 10/10-10/26 4:30-6 p.m.

### Internet and More

Learn how to search the Web, use Facebook, create your Favorites, download software and use tabbed browsing. Find out how to send attachments and study the basics of email etiquette. This is the class you don't want to miss! Computer Basics or basic computer skills are required. AAR 109E (Gaither) \$39

CLCE 003 A 8010 TTh 10/31-11/16 4:30-6 p.m.

**Sign up for an individual course or save \$22  
by taking the series for \$95! Item #8015.**

## Health & Wellness

### Staying Healthy Naturally: Powerful Essential Oils for Mind-Body Comfort and Wellness-NEW

Learn about 12 essential oils and blends that naturally energize, improve your mood; kill germs; provide pain relief; ease stress; improve mental clarity, soothe burns, minor cuts, scrapes, and bruises; clean the air and smell good too. You'll learn how to choose, use and apply essential oils for increasing your health and wellness. DTV 202 (Grumbles) \$39

CLCE 027 A 8185 Th 10/5-10/19 6-8 p.m.

### Five Tools for Getting More Done-NEW

Want more time to do the things you like, be more productive, and get things done with less stress and effort? Then this is the class for you. This class is about where your mind needs to be in order to be productive and how to get it there; I'd call it mental consciousness. Shape your positive mindset for achieving what you want (you might improve your health and wellbeing too.) See clear outcomes and results; set clear specific measurable goals; draft a project plan and how you'll work your plan. Create and control the best environment for your most successful outcomes. Build effective strategies and practices for taking control of your success the rest of your life. DTV 201 (Grumbles) \$59

CLCE 028 A 8190 W 10/4 -11/1 6-8 p.m.

### Aquatic Fitness

*Did you know that exercising in water makes you feel up to 90 percent lighter*, according to the American Council on Exercise? This reduces the impact on your joints, creating an ideal exercise environment for those with arthritis, back problems, foot/leg injuries and knee problems and is also perfect for pregnant women. Dick Mealy Pool at Mark Morris (Dickey) \$69 *No class 11/27*

CLCE 035 A 8225 MTTh 9/18-12/7 11:50 a.m.-12:45 p.m.

### Beginner Barre-NEW

Beginner barre is an in depth introduction to the practices of barre. This class focuses on strengthening and toning the entire body by training small movements that isolate muscles followed immediately by a stretching session to help create those long lean muscles. While barre uses concepts and terminology from ballet, there are also foundations in yoga, Pilates, and weight training, but no prior experience in any of those areas is needed! GYM 210 (Shuyler) \$59

#### Session One

CLCE 029 A 8250 WF 9/20-10/27 12-1 p.m.

#### Session Two

CLCE 029 B 8255 WF 11/1-12/8 12-1 p.m.

### Yoga for Strength and Flexibility-NEW

Create a perfect balance to your yoga practice! This class will flow between strength and flexibility focuses each class. On Tuesday, there will be the optional added challenge of hand weights to help strengthen the muscles, and on Thursday, the emphasis will be on flexibility, with more extensive stretches and holding of postures. Build body awareness, develop your strength, test your balance, and extend your flexibility all in one class! GYM 210 (Shuyler) \$59 *No class 11/23*

#### Session One

CLCE 029 C 8260 TTh 9/19-10/26 7-8 a.m.

#### Session Two

CLCE 029 D 8265 TTh 10/31-12/12 7-8 a.m.

## Pilates Core Challenge

Pilates is a form of exercise that emphasizes the balanced development of the body through core strength, flexibility and awareness to support a graceful movement. Focusing on six principles, your Pilates workout will incorporate centering, control, flow, breath, precision and concentration. As core strength is the corner stone of Pilates, you will develop your core strength and stability throughout your entire torso, helping to create a stronger YOU! GYM 210 (Poole) \$60

### Session One

CLCE 034 A 8215 MW 9/25-11/1 5:30-6:30 p.m.

### Session Two

CLCE 034 B 8220 MW 11/6-12/13 5:30-6:30 p.m.

## Zumba Fitness

The Zumba workout combines high-energy dance moves with traditional exercises such as lunges, squats and arm curls. Upbeat music like the merengue, salsa and mambo keep the energy high but alternate between slow and fast, keeping you on your toes! Zumba is fun to do and can be a great way to lift your spirits all while getting into shape and burning as many as 540 calories in the hour class! GYM 210 (Davis) \$59 *No class 11/23*

### Session One

CLCE 030 A 8195 TTh 9/19-10/26 5:30-6:30 p.m.

### Session Two

CLCE 030 B 8196 TTh 10/31-12/12 5:30-6:30 p.m.

## Spin Fitness

Bring on the Britney Spears, Lil Jon, and Katy Perry... this will be the sweatiest party you've ever been to! This full body workout rocks to the beat of the music involving sprints, push-ups, climbing hills, hand weights, and core work. This 50 minute class will leave you feeling strong and energized! Get ready to 'hit the corners' and 'tap it back' to transform the way you look and feel. Hop on a stationary bike and join the fun! (Isaacson) \$65

### Session One

CLCE 037 A 8244 MW 9/11-10/18 5:30-6:20 p.m.  
GYM 212 \$65

CLCE 037 D 8247 T 9/12-10/10 4:30-5:20 p.m.  
GYM 210 \$35

### Session Two

CLCE 037 B 8245 MW 10/23-11/29 5:30-6:20 p.m.  
GYM 212 \$65

CLCE 037 E 8248 T 10/17-11/14 4:30-5:20 p.m.  
GYM 210 \$35

### Session Three

CLCE 037 C 8246 MW 12/4-12/18 5:30-6:20 p.m.  
GYM 212 \$35

CLCE 037 F 8249 T 11/21-12/19 4:30-5:20 p.m.  
GYM 210 \$35

## Beginning Better Bones & Balance

For beginners or anyone who prefers a lower intensity class. Please bring hand weights (3, 4, or 5 pounds). Classes meet at the Youth and Family Link Gym. (Swanson/ Bain) \$49

### Session One (No classes 10/9, 10/30 & 11/1)

CLCE 032 A 8205 MW 9/11 -11/15 10-10:50 a.m.

### Session Two (No classes 12/25-1/4/18)

CLCE 032 B 8206 MW 11/27-2/7/18 10-10:50 a.m.

## Better Bones and Balance

The Better Bones and Balance course has been designed to gradually improve balance and strength and significantly slow the rate of bone loss. Our classes are safe for individuals with osteoporosis and osteopenia. Bring a pair of indoor shoes, a mat and hand weights (3, 4, or 5 pounds). Classes meet at Youth and Family Link. (Swanson/Bain) \$49

### Session One (No classes 10/9, 10/30 & 11/1)

CLCE 036 A 8230 MW 9/11 -11/15 7-7:50 a.m.

CLCE 036 B 8235 MW 9/11 -11/15 8-8:50 a.m.

CLCE 036 C 8240 MW 9/11 -11/15 9-9:50 a.m.

### Session Two (No classes 12/25-1/4/18)

CLCE 036 D 8231 MW 11/27-2/7/18 7-7:50 a.m.

CLCE 036 E 8236 MW 11/27-2/7/18 8-8:50 a.m.

CLCE 036 F 8241 MW 11/27-2/7/18 9-9:50 a.m.

## The Power of Movement: Chair Exercises

(formerly Better Bones and Balance Basic)

This class is for you if you have not exercised for a while, or you're being released from a medical injury. Stretching, strengthening and having fun is the basis for this class. Some standing and lots of chair exercising. The power of movement is what it's all about. Classes meet at the Youth and Family Link Gym. (Bain) \$49

### Session One (No classes 10/9, 10/30 & 11/1)

CLCE 033 A 8210 MW 9/11 -11/15 11-11:50 a.m.

### Session Two (No classes 12/25-1/4/18)

CLCE 033 B 8211 MW 11/27-2/7/18 11-11:50 a.m.

## Low Impact Aerobics

This is a great way to increase stamina, flexibility and cardio endurance. Movements are gentle on the joints and easy to follow. From beginning to advanced levels of intensity, work at your own pace! Classes meet at the Youth and Family Link Gym. (Bain)

*\$14 for Better Bones & Balance registered students, item 8200. \$20 Low Impact Aerobics only, item 8201, first session; 8206 second session.*

### Session One (No class 11/2)

CLCE 031 A 8200/8201 Th 9/14-11/16 10:15-11:05 a.m.

### Session Two (No classes 12/28 & 1/4)

CLCE 031 B 8205/8206 Th 11/30-2/8 10:15-11:05 a.m.



**Year 2017**  
 Winter      Spring  
 Summer    **Fall**

**Register Online**  
for Corporate and  
Continuing Education!  
[lowercolumbia.edu/ce](http://lowercolumbia.edu/ce)

**Sign up now!**  
**Corporate and Continuing Education**

E-mail Address	Home Phone	Work Phone	Cell Phone
----------------	------------	------------	------------

[illegible]

---

Class enrollment is first-come, first-served. Register early to secure your place in your preferred courses

lowercolumbia.edu | Fall 2017



# Veterans' Services

Lower Columbia College has been designated as a Military Friendly School on the basis of its educational programs, support services and financial assistance dedicated to helping veterans and members of the military succeed in their college goals. The ranking by GI Jobs goes to just the top 15% of colleges in the nation.

The college offers approved educational programs to eligible veterans and eligible dependents of deceased or totally disabled veterans under Title 38 and Title 10, U.S. Code.

LCC staff provides assistance with completing the process to apply for the GI Bill, veterans' health benefits and other college services. To get started, veterans need DD 214 Member 4 Copy, Report of Separation from Active Service.

Resident veterans who served, or who provided direct support to American service members in a combat zone may also qualify for special tuition rates and other financial aid.

Veterans planning to enroll at LCC are encouraged to familiarize themselves with available VA Education Benefits.

## The College participates in the following VA educational programs

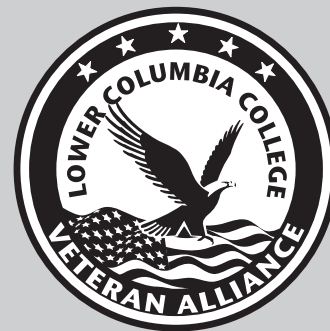
- Post 9/11 GI Bill - Ch 33
- Montgomery GI Bill Active Duty (MGIB-AD) - Ch 30
- Survivors and Dependents Educational Assistance (DEA) - Ch 35
- Montgomery GI Bill Selected Reserve (MGIB-SR) - 1606
- Reserve Educational Assistance Program (REAP) - 1607
- Vocational Rehabilitation and Employment (VR&E) - Ch 31

## Lower Columbia College Veteran Alliance

If you are a veteran who has served in the Armed Forces and are attending Lower Columbia College, you are invited to join our Veteran Alliance Organization, which meets twice each month. Veterans decide the meeting agenda. Some possible topics include:

- Navigating the Veterans Affairs system
- Financial Aid for college
- National scholarships available to veterans
- Housing Assistance information
- VFW Presentations
- Connecting with other veterans on campus
- Making the transition back home
- Outreach projects for military and veteran community
- Veteran-related campus events
- Employment assistance through work source veterans representative

**For more information call 360.442.2346**



## Attend Spring Quarter's Veteran Briefing

**September 27,  
10 a.m. or 3 p.m.**

### Clubs and Orgs Room

Learn about key resources for veterans and their dependents at LCC. This briefing is for new and current students or those who want to learn more about attending college.

Contact Vet Corps Navigator  
Connie O'Brien Larsen  
[cobrienlarsen@lowercolumbia.edu](mailto:cobrienlarsen@lowercolumbia.edu)



## Veterans' Corner

The LCC Veterans' Corner is upstairs in the Student Center. There will be a Vet Corps Navigator working in the Veterans' Corner from September through June to help veterans with questions about benefits, attending college, job searches or just to talk. Please stop by!

# COLLEGE SERVICES INFORMATION

## ■ ADVISING

New students may contact entry advisors daily through the Entry Center in the Admissions Center. Returning students should contact their advisors through the Entry Center or the LCC Directory at [lcc.ctc.edu/employees](http://lcc.ctc.edu/employees) if they have questions.

360.442.2311 [entry@lowercolumbia.edu](mailto:entry@lowercolumbia.edu)

## ■ CAREER AND EMPLOYMENT SERVICES

Assess your interests, explore careers, research training, find openings in your field, and get help with career planning in the Admissions Center.

360.442.2330 [lowercolumbia.edu/careercenter](http://lowercolumbia.edu/careercenter)

## ■ CHILD CARE/PRESCHOOL

Child care for children, one month to six years, is available for LCC students, staff, faculty, and community members in The Early Learning Center. Children are cared for in a quality environment while learning skills and concepts based on best practices and current research in Early Childhood Education.

360.442.2890

## ■ COOPERATIVE EDUCATION

Contracted work experience related to a degree or certificate program coordinated with the employer, instructor/coordinator, and student to meet specific learning objectives. See class listings for more information.

## ■ COUNSELING CENTER

Counselors help students with academic, personal, and crisis situations. Find out about student success groups too.

360.442.2311

## ■ DINING

The Fork & Flame café: 8 a.m.-1:30 p.m.; Espresso Bar: 7:30 a.m.-3 p.m. Monday–Friday. Located in the Student Center.

## ■ DISABILITY SUPPORT SERVICES

If you have a disability, the Disability Support Services Office in Admissions Center Room 143, may be able to provide reasonable accommodation, arrange auxiliary aids, advising, admission, registration, referrals, counseling, educational and vocational planning and voter registration.

360.442.2341 [lowercolumbia.edu/disability](http://lowercolumbia.edu/disability)

## ■ FINANCIAL AID

Apply early for financial aid; processing takes 3-6 weeks. Application and deadline information is located on page 7.

360.442.2390 [lowercolumbia.edu/finaid](http://lowercolumbia.edu/finaid)

## ■ GED TESTING

GED testing at LCC is all computer-based. You can register, schedule, and pay online 24/7 and get your test results immediately.

360.442.2353 [lowercolumbia.edu/ged](http://lowercolumbia.edu/ged)

## ■ INSURANCE AVAILABLE TO STUDENTS

LCC offers an accident and sickness insurance plan designed for students. Brochures are available in the Admission Center.

## ■ LEARNING COMMONS AND LIBRARY

Hours: Monday–Thursday: 7:30 a.m.-7 p.m.; Friday: 7:30 a.m.-4 p.m.; Saturday: 10 a.m.-2 p.m.

## ■ PLACEMENT ASSESSMENT

Students who plan to earn a degree or certificate from Lower Columbia College, or who plan to transfer to a four-year institution, can use multiple measures for the purpose of determining English and Math placement. Placement options include, but are not limited to, Directed Self-Placement, Smarter Balanced scores, High School transcripts, and previous college course work. Placement assessments are offered in the Admissions Center testing lab, open 10 a.m.-5 p.m. Mon–Thurs. More information is available at [lowercolumbia.edu/placement](http://lowercolumbia.edu/placement).

360.442.2353

## ■ RUNNING START

High School juniors and seniors may be eligible to take college classes for credit toward both their high school diploma and their college degree program. Advance planning is required.

360.442.2352

## ■ TECH PREP/CAREER PATHWAYS

High school students can take specific high school courses and receive credit toward both their high school diploma and LCC degree. See your high school counselor for details.

## ■ TRIO PROGRAMS

TRIO Student Support Services is offered at LCC for students who are first-generation, low-income, or students with disabilities and are interested in earning a bachelor's degree. Contact Jodi Dahlke, Director of TRIO Programs, for more information.

[jdahlke@lowercolumbia.edu](mailto:jdahlke@lowercolumbia.edu)

## ■ TUTORING SERVICES

Tutoring Services provides one-on-one and small group sessions in nearly every discipline including Canvas orientations. Tutors can assist with specific course content, plus general study skills, such as time management, lecture note-taking and textbook reading. Tutoring is offered in the Learning Commons: Mon-Thurs 7:30 a.m.-6 p.m., Fri 7:30 a.m.-4 p.m., Sat 10 a.m.-2 p.m.

[lowercolumbia.edu/tutoring](http://lowercolumbia.edu/tutoring)

## ■ VETERAN RESOURCE CORNER

The Veteran Resource Corner is located on the second floor of the Student Center, next to ASLCC. The area provides a veteran-friendly academic environment for veteran students and their dependents. It is also a place where veteran students can access vital resources and benefit information. Contact Connie O'Brien-Larsen for details.

[cobrienlarsen@lowercolumbia.edu](mailto:cobrienlarsen@lowercolumbia.edu)

## ■ WITHDRAWAL

If you leave a class without completing it, withdraw or arrange an "incomplete" with your instructor in order to avoid receiving a poor final grade. Forms and information are available in the Registration Office. Check withdrawal deadlines on page 4. If your class ends before the end of the quarter, you may withdraw through the last day of instruction for that class.

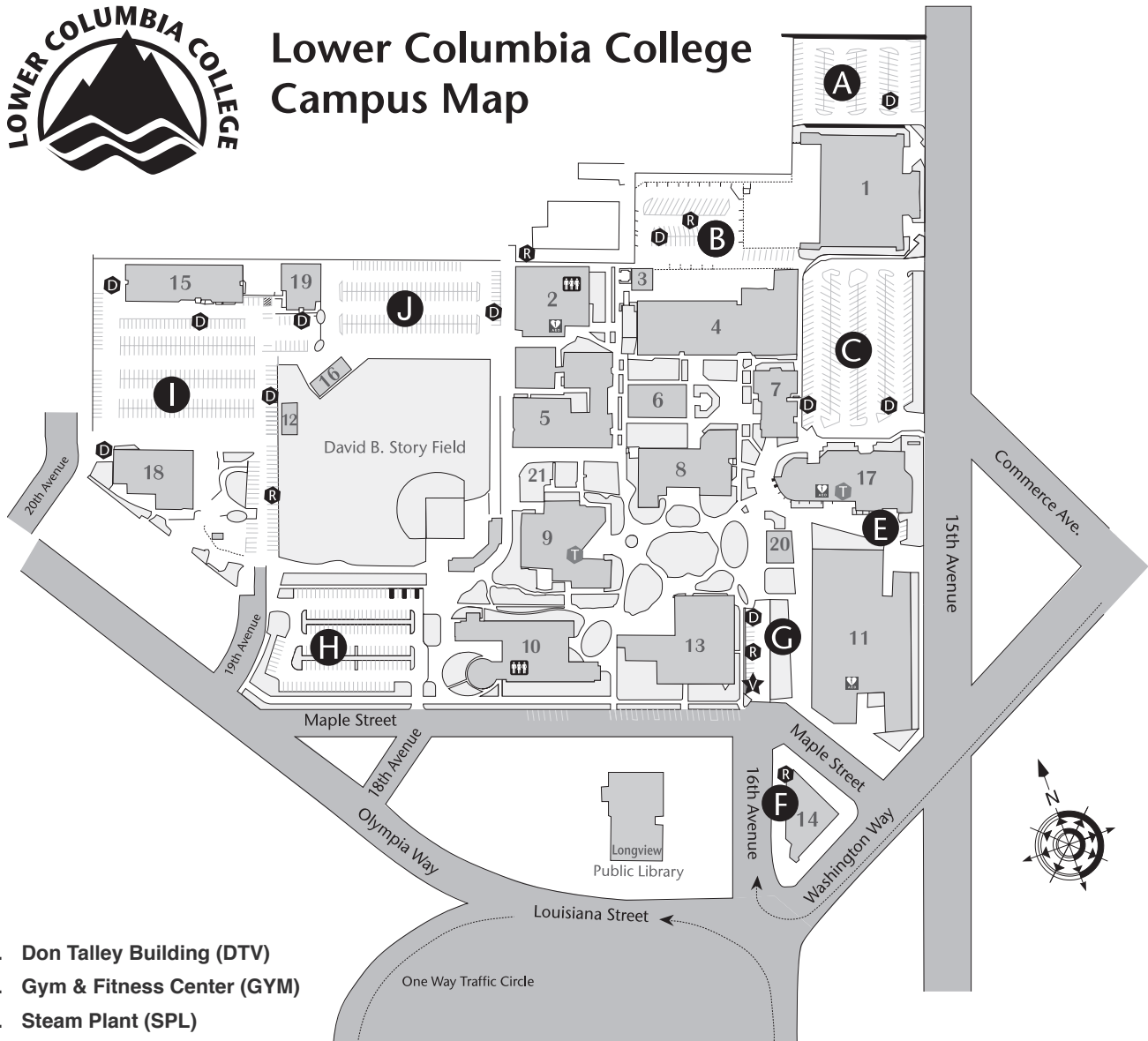
## ■ WORKER RETRAINING

For dislocated workers and others seeking employment, training orientations are offered every Tuesday from 1:30-2:30 p.m. (except holidays), Admissions Center, Room 120.

360.442.2330 [workerretraining@lowercolumbia.edu](http://workerretraining@lowercolumbia.edu)



# Lower Columbia College Campus Map



1. Don Talley Building (DTV)
2. Gym & Fitness Center (GYM)
3. Steam Plant (SPL)
4. Vocational Building (VOC)
5. Applied Arts Building (AAR)
6. Science Building (SCI)
7. Physical Science Center (PSC)
8. Admissions Center (ADC)
  - Career Services
  - Cashiers
  - Disability Support Services
  - Financial Aid
  - Registration
  - Testing Center
9. Library- Alan Thompson (LIB)
  - eLearning
  - Regional University Center
  - Tutoring Center
10. Health and Science Building (HSB)
11. Rose Center for the Arts (RCA)

12. International Center (INC)
13. Main Building (MAN)
14. Administration Building (ADM)
15. Head Start/Home & Family Life (HFL)
16. Batting Barn (BTB)
17. Student Center (STC)
  - Bookstore
  - Dining
  - Student Activities Office
  - Student IDs/Information
18. Campus Services Building (CMS)
19. Head Start East Building (HSE)
20. Pavilion

- A - J Parking Lots
- D Disabled Parking
- R Reserved Parking
- M Motorcycle Parking
- T Telephones
- ★ Visitors
- AED External Defibrillator (AED)
- Gender Neutral Restroom

**Note:** Buildings are not physically numbered. The numbers on this map are for key purposes only. Parking permits are required in all lots.



1600 Maple Street  
PO Box 3010  
Longview, WA 98632-0310

PERIODICALS

## WSS CAR-RT PRESORT RESIDENTIAL CUSTOMER

### **Come to LCC and discover what you can be.**

Whether you are preparing to enter or move up in the workforce, planning to transfer to a university, or just want to learn something new, LCC offers a high quality, affordable option located right here in the community.

Take a look inside and start planning your next chapter.

- **New!** Associate in Music degree – page 3
- How to pay for college – page 7
- University transfer options – page 8
- Preparing for the workforce – page 9
- See if you qualify for special funding for college – page 13
- Fall quarter class offerings – page 15
- Host an International Student – page 20
- Fall arts and entertainment options – page 24
- How to attend LCC tuition-free while you're in high school – page 25
- Lower Columbia Regional University Center – page 25
- **New!** Join the LCC Alumni Association – page 26
- Donate to the Student Success Fund – page 31
- Sign up to receive emergency text alerts from LCC – page 34
- Corporate and Continuing Education – page 37
- Special services for veterans – page 45

**Learn more at**  
**[lowercolumbia.edu](http://lowercolumbia.edu)**

