

# LCC QUARTERLY

## WINTER 2021

*New  
Look!*

HEALTH & SCIENCE BUILDING

MARYLOU SCHALL  
MEMORIAL PLAZA

**Class schedule now available online  
at [lowercolumbia.edu/classes](https://lowercolumbia.edu/classes)**



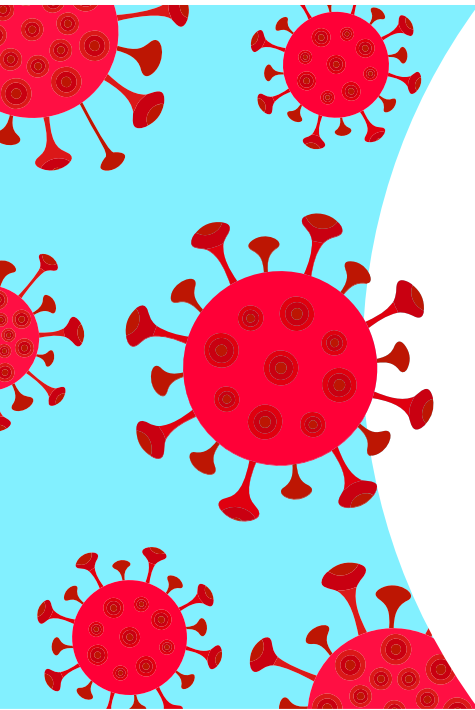
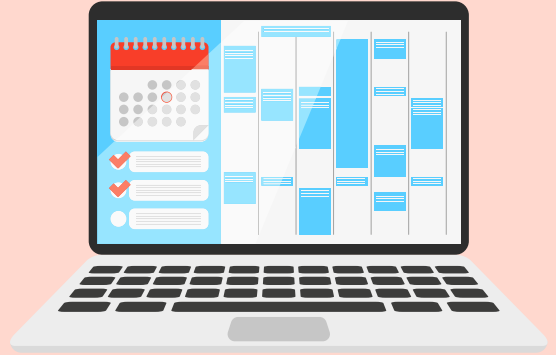
**Winter Classes Start January 4**

# NEW & NOTEWORTHY

## Winter 2021 Class Schedule

*Now Available!*

You can now find the LCC class schedule online at [lowercolumbia.edu/classes](http://lowercolumbia.edu/classes)



## COVID-19 Update

Due to the ongoing pandemic, many of our classes continue to be online. However, we are offering a wide variety of on-campus and hybrid classes, held in person with proper safety protocols in place. The online schedule includes information about the instructional mode of individual classes.

Many of our services are also operating at least partially remotely. To get help online, visit [lowercolumbia.edu/virtual](http://lowercolumbia.edu/virtual) (Zoom links, email addresses and phone numbers available).

Learn more about our COVID response at [lowercolumbia.edu/covid-19](http://lowercolumbia.edu/covid-19).

**About This Mailer:** LCC sends quarterly mailers to all households in Cowlitz and Wahkiakum counties four times a year to inform residents about college programs and services. Because they are addressed to “residential customer,” we are unable to remove individuals from our distribution list.

**Volume 13, No. 1, Winter 2021.** LCC Class Schedule (USPS 025-007) is published four times a year (November, February, April and June) by Lower Columbia College. The Lower Columbia College Office of Effectiveness & College Relations is located at 1600 Maple Street, Longview, WA 98632-0310. Periodicals postage paid at Longview, WA and at additional mailing offices.

**POSTMASTER:**

Send address changes to Lower Columbia College, 1600 Maple Street, Longview, WA 98632-0310.

## Programs

- 1** Bachelor of Applied Science (BAS) Degree
- 64** Associate Degrees
- 29** Professional Certificates
- 8** Career Pathways



## We Also Offer

- ✓ High School Completion
- ✓ Pre-college Math and English
- ✓ English as a Second Language
- ✓ Continuing Education

## Our Students

- 5,300** Students per Year
- 28%** Students of Color
- 30** Average Age
- 18:1** Student-Faculty Ratio



# HOW TO REGISTER

Registration for winter quarter begins **November 16** for current (returning) students and **November 23** for new students.

## FIRST STEPS for New Students

- Apply for Admission – no fee to apply!**
  - Online at [lowercolumbia.edu/apply](http://lowercolumbia.edu/apply)
  - Assistance available at the One-Stop Center, [lowercolumbia.edu/onestopzoom](http://lowercolumbia.edu/onestopzoom)
  - Re-apply after two or more years away
  - Student number provided once you apply
- Apply for Financial Aid**
  - Fill out financial aid application (FAFSA/WASFA)
  - Find links at [lowercolumbia.edu/aid](http://lowercolumbia.edu/aid)
  - Visit the One-Stop Center, [lowercolumbia.edu/onestopzoom](http://lowercolumbia.edu/onestopzoom)
- Complete New Student Orientation (NSO)**
  - Online at [lowercolumbia.edu/nso](http://lowercolumbia.edu/nso)
  - Get help at the One-Stop Center, located in the Admissions Center
- Meet with an Advisor**
  - Appointment scheduled once NSO is complete
  - Develop an academic plan
  - Register for classes

## Current Students

Registration begins November 16 for students who have attended LCC within the last year.

1. **Log in to ctclink** and visit your ctclink Student Homepage. Find out your earliest registration date/time by clicking on the **Manage Classes** tile. Click on **Enrollment Dates**, located in the menu on the left hand side of the page.
2. **Communicate with your program advisor** to review your academic plan and plan your class schedule. To find your advisor's information, log in to your ctclink Student Homepage. Click on the **Academic Progress** tile and navigate to the **Advisors** link, located in the menu on the left hand side of the page.
3. **Register** online in ctclink. Students taking more than 18 credits must contact Registration for assistance.
4. **Pay your tuition and fees** by the deadline listed on the Academic Calendar online. You may pay online with a credit or debit card using the ctclink Student Homepage, Financial Account Tile or in person, when the campus is open, at the Cashier. Learn more about the tuition payment plan at [lowercolumbia.edu/payment-plan](http://lowercolumbia.edu/payment-plan).

### Class Full?

Select "yes" during online registration to get on a waitlist.

**Non-credit classes:** see page 14 for more information about Continuing Education classes.

# DATES & DEADLINES



Register by the last day of finals for the upcoming quarter and you will automatically be entered into a drawing to win a \$50 giftcard to the LCC Bookstore!

Veterans/Dependents Priority Registration begins .....	November 9
Priority registration for winter quarter begins .....	November 16
Admission deadline for degree/certificate students .....	November 23
Open registration for winter quarter begins .....	November 23
Application deadline for winter quarter financial aid .....	November 23
Winter quarter tuition due .....	December 22
Last day to be added to a waitlist.....	December 31
First day of classes .....	January 4
Last day of online registration.....	January 6
Instructor permission required to add a course.....	January 7
Last day for 100% tuition refund .....	January 10
Last day to withdraw and avoid a "W" .....	January 15
Martin Luther King Day Holiday.....	January 18
Last day for 50% tuition refund .....	January 23
Last day to apply for winter quarter graduation .....	January 27
Presidents' Day Holiday .....	February 15
Last day to withdraw from classes .....	February 26
Last day of winter quarter classes .....	March 12
Winter quarter finals* .....	March 16-18

\* The FINAL EXAM SCHEDULE is located at [lowercolumbia.edu/classes/finals.php](http://lowercolumbia.edu/classes/finals.php)

# ONLINE & REGISTRATION SERVICES

You can do virtually everything online at LCC: register for classes, apply for aid and scholarships, make payments, check schedules and grades, and more.

Learn more at [lowercolumbia.edu/online-services](https://lowercolumbia.edu/online-services)

## ctcLink

Many online services are available in ctcLink, our primary operating system. Your ctcLink (student) ID number comes in the welcome email you receive after applying. Activate your account online in minutes.

Learn more at [lowercolumbia.edu/ctcLink](https://lowercolumbia.edu/ctcLink)



## Virtual Welcome Center

Need help without coming to campus?

Visit us online at [lowercolumbia.edu/virtual](https://lowercolumbia.edu/virtual)

*Congratulations, you're in at LCC!*

There are no fees, essays or test scores required to apply.  
Just fill out an online form, and you're in!

Get started today at [lowercolumbia.edu/apply](https://lowercolumbia.edu/apply)

# Start Next Quarter



*Find out if you qualify for special funding!*

Take the 10-minute survey at [startnextquarter.org](https://startnextquarter.org) to find out if you might qualify for programs that help cover college expenses.

Learn more at [startnextquarter.org](https://startnextquarter.org)

# PAYING FOR COLLEGE



## Tuition & Fees

[lowercolumbia.edu/tuition](https://lowercolumbia.edu/tuition)

Visit us online for more information about current tuition and fee rates.

## Financial Aid

[lowercolumbia.edu/financial-aid](https://lowercolumbia.edu/financial-aid)

There are two different application forms for financial aid. The **FAFSA** is for U.S. citizens and permanent residents of the U.S. The **WASFA** is for people who are ineligible for federal financial aid due to immigration status.

## Basic Food, Employment & Training (BFET)

[lowercolumbia.edu/bfet](https://lowercolumbia.edu/bfet)

Students who are eligible for federal basic food benefits may be eligible for BFET support.

## Opportunity Grant

[lowercolumbia.edu/opportunity-grant](https://lowercolumbia.edu/opportunity-grant)

Unemployed or underemployed adults seeking a certificate or degree in a high demand career field may be eligible for an Opportunity Grant.

## Scholarships

[lowercolumbia.edu/scholarships](https://lowercolumbia.edu/scholarships)

LCC awards over \$250,000 in scholarships every year. All scholarships are different, and many are not dependent on income eligibility. Scholarships cover tuition, student fees, books and supplies. Some scholarships also cover other expenses like transportation or childcare. The scholarship application period is usually open from early February to early April.

## Tuition Payment Plan

[lowercolumbia.edu/payment-plan](https://lowercolumbia.edu/payment-plan)

LCC's payment plan allows you to pay your tuition in smaller, more convenient monthly payments. Once you enroll, payments are charged to your credit/debit card or come out of your bank account automatically.

## Veterans' Services

[lowercolumbia.edu/veterans](https://lowercolumbia.edu/veterans)

LCC offers approved educational programs to eligible veterans and dependents of deceased or totally disabled veterans under Title 38 and Title 10, U.S. Code.

## Washington College Grant

[lowercolumbia.edu/free-college](https://lowercolumbia.edu/free-college)

Finally, a guaranteed state need grant for middle- and low-income families. Just fill out the FAFSA or WASFA to see if you qualify to attend college for free.

## Worker Retraining

[lowercolumbia.edu/worker-retraining](https://lowercolumbia.edu/worker-retraining)

Worker Retraining is a state-funded program to help dislocated and unemployed workers retrain for a new career.



# ALL ABOUT BOOKS

## Need to purchase your textbooks? The LCC Bookstore makes it easy!

Visit the Bookstore in person and remember to bring your schedule. You can also purchase textbooks online. For Bookstore hours of operation and book buyback info, please visit our website.

### EVERYTHING

you need to be ready for class!



### BUY YOUR BOOKS ONLINE

- ▶ Textbooks ordered during the first two days of class may take two additional days to process
- ▶ Options available for purchasing Online: Ship textbooks directly to you or pick-up in store
- ▶ We accept Visa, MasterCard, and LCC gift cards



[bookstore.lowercolumbia.edu](http://bookstore.lowercolumbia.edu)



### What is the Red Devil Rewards Program?

The program allows you to earn points on every purchase at the LCC Bookstore, whether online or in store. Points are redeemable for credit towards future purchases... the more you buy, the more you save!  
**\$1 = 1 point**

More info on the Bookstore website

### CLASSES THAT USE FREE OR INEXPENSIVE TEXTBOOKS

Visit [lowercolumbia.edu/classes](http://lowercolumbia.edu/classes) to access the list, or search for "Low-Cost Textbooks" or "OER - No Textbook to Purchase" under "Course Attributes" in the online schedule.



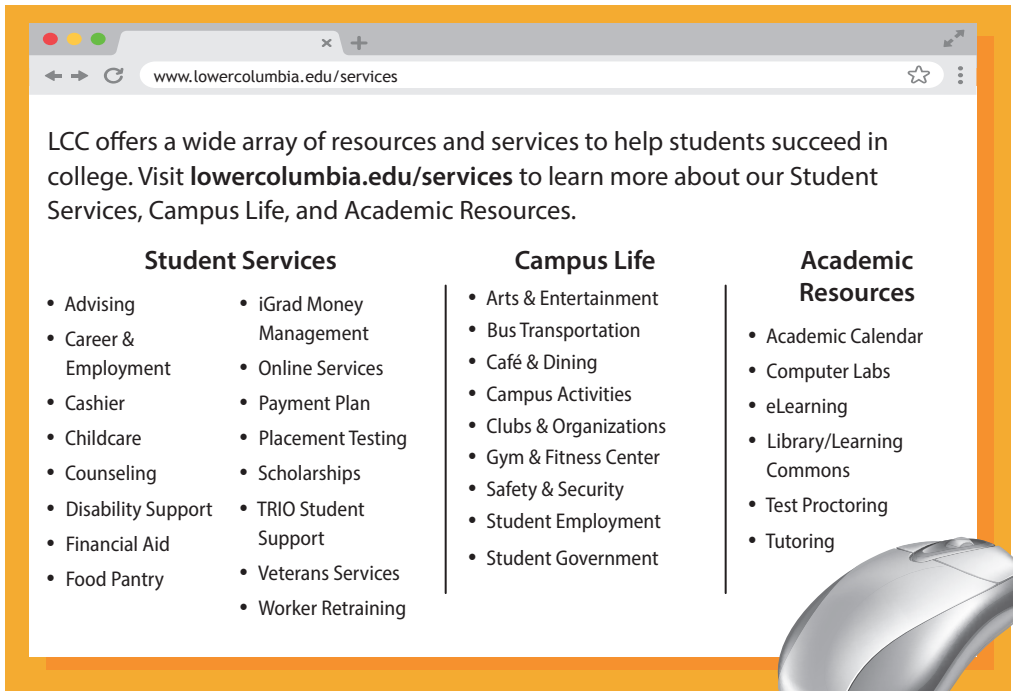
# RIDE FREE

with LCC Student ID!

[lowercolumbia.edu/bus](http://lowercolumbia.edu/bus)




# STUDENT RESOURCES & SERVICES



A screenshot of a web browser displaying the LCC website. The address bar shows [www.lowercolumbia.edu/services](http://www.lowercolumbia.edu/services). The main content area is titled "LCC offers a wide array of resources and services to help students succeed in college. Visit [lowercolumbia.edu/services](http://lowercolumbia.edu/services) to learn more about our Student Services, Campus Life, and Academic Resources." Below this, there are three columns of resources:

- Student Services**
  - Advising
  - Career & Employment
  - Cashier
  - Childcare
  - Counseling
  - Disability Support
  - Financial Aid
  - Food Pantry
  - iGrad Money Management
  - Online Services
  - Payment Plan
  - Placement Testing
  - Scholarships
  - TRIO Student Support
  - Veterans Services
  - Worker Retraining
- Campus Life**
  - Arts & Entertainment
  - Bus Transportation
  - Café & Dining
  - Campus Activities
  - Clubs & Organizations
  - Gym & Fitness Center
  - Safety & Security
  - Student Employment
  - Student Government
- Academic Resources**
  - Academic Calendar
  - Computer Labs
  - eLearning
  - Library/Learning Commons
  - Test Proctoring
  - Tutoring

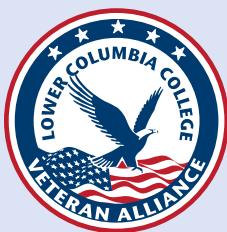


## ONLINE LEARNING @ LCC

We offer fully online, hybrid (partially online and partially on-campus), and enhanced (on-campus with required online components) classes. Visit [lowercolumbia.edu/classes](http://lowercolumbia.edu/classes) and select "On-line" under "Instruction Mode" in the online schedule. LCC's online learning management system is Canvas. Need help with Canvas? Schedule a tutoring session through the Learning Commons at 360.442.2572 or contact eLearning at 360.442.2520.

## DIVERSITY CLASSES

Visit [lowercolumbia.edu/classes](http://lowercolumbia.edu/classes) to access the current online schedule. Under search options, select "LCC Defined Attributes" in the "Course Attributes" field to see a list of search items, including diversity classes and classes that meet other distribution requirements.



If you are a veteran who has served in the armed forces and are attending LCC, you are invited to join our Veteran Alliance Organization.

LCC also has a Vet Corps Navigator onsite, as well as a Veterans' Center on the first floor of the Student Center.



Washington State

Learn more at [lowercolumbia.edu/veterans](http://lowercolumbia.edu/veterans)

# ARTS & ENTERTAINMENT

## ROSE CENTER FOR THE ARTS



### ART GALLERY

**Austin Turley**

January 4 - 28

**Ending Stasis**

*Supporting Mental Health Through Art*

February 15 - March 11

**The New Now:**

*Making Photographs in  
the Pandemic Age*

March 22 - April 1

[lowercolumbia.edu/gallery](http://lowercolumbia.edu/gallery)

*Stay tuned for news about  
exciting new performances from  
LCC's performing arts students.  
More details to come!*

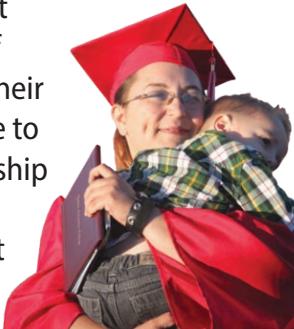
[lowercolumbia.edu/aande](http://lowercolumbia.edu/aande)



Subscribe to our monthly emails  
about cultural events hosted by the  
Rose Center for the Arts at LCC:  
[lowercolumbia.edu/aande](http://lowercolumbia.edu/aande)

### You Can Make a Difference!

Help a student  
most at risk of  
abandoning their  
education due to  
financial hardship  
by donating  
to the Student  
Success Fund.



[lowercolumbia.edu/foundation](http://lowercolumbia.edu/foundation)

### Host an International Student!



If you have a spare room and an open heart,  
you can provide a home away from home for  
an international student in our community.  
As a host, you'll provide room and board  
and friendship for a student studying at LCC.  
You'll learn about different cultures while  
sharing a slice of your American life. Host  
families come in all shapes and sizes and  
receive a monthly stipend. For more info, visit  
[lowercolumbia.edu/international](http://lowercolumbia.edu/international) or email  
[international@lowercolumbia.edu](mailto:international@lowercolumbia.edu).

# BACHELOR'S AND BEYOND

## Bachelor of Applied Science in Teacher Education



LCC's first applied bachelor's program will prepare you for a career in education or early childhood education.

We offer both certification and non-certification options. Interested in attending part-time?

Learn more at [lowercolumbia.edu/bas-te](http://lowercolumbia.edu/bas-te)

## University Center

Bachelor's and graduate degrees on the LCC campus

Dozens of degree options are available to Lower Columbia area residents through our unique university center collaborative with partner universities. Options include LCC's new Bachelor of Applied Science in Teacher Education.

**LCC Library Building**  
**360.353.7800**  
[lowercolumbia.edu/u-center](http://lowercolumbia.edu/u-center)



# FOR HIGH SCHOOL STUDENTS

## Running Start Program

Tuition-free college for high school students

**Running Start** is a statewide program that lets eligible high school juniors and seniors take college classes tuition-free. Students can attend part- or full-time, and can continue to participate in high school activities such as sports.



[lowercolumbia.edu/running-start](http://lowercolumbia.edu/running-start) • 360.442.2442

## GraduationPlus

In today's economy, you need a *high school diploma plus a college credential* to earn a living wage!



- Credits you earned in high school may also count toward a college credential.
- By 2023, **four out of five job openings** are expected to require at least some education beyond high school.
- Earning a two-year degree can **boost lifetime earnings by \$324,000** (on average) over a high school diploma alone.

Learn more at [lowercolumbia.edu/graduation-plus](http://lowercolumbia.edu/graduation-plus)

# CAREER PATHWAYS

93 Degrees & Certificates | 8 Career Pathways

**Explore your path!**

[lowercolumbia.edu/programs](https://lowercolumbia.edu/programs)



**Accounting & Business**



**Arts, Communication & Humanities**



**Health Sciences & Wellness**



**Information Technology**



**Manufacturing, Trades & Transportation**



**Science, Technology, Engineering & Math  
(STEM)**



**Social Science & Criminal Justice**



**Teacher Education & Early Learning**



# CORPORATE & CONTINUING ED

Corporate and Continuing Education supports the college's mission by providing opportunities for individuals, businesses, and organizations to pursue their personal, professional, and corporate training goals. Contact us to discuss customized options!

Visit us online at [lowercolumbia.edu/ce](http://lowercolumbia.edu/ce) and click on the shopping cart feature (this will take you to our online registration site where you can find individual classes, descriptions of current offerings, and register) to learn more.

Classes are available in the following categories:

- Art & Culture**
- Business & Professional Development**
- Computers & Technology**
- Health & Wellness**
- Paraeducator Training**
- Workforce Training**



## Register for one of our fitness classes over Zoom! Same great instructors and supportive classmates!

### Mat Pilates - Online Zoom!

Improve your core strength in a safe manner. Appropriate for all levels, however, students need to be able to perform exercises on the floor using a mat. **Online Zoom:** Instructor will contact you with information on how to join your class (Poole) \$65. Mon/Wed, No class 1/18 & 2/15

**Session One** 1/11-2/17 5:30-6:30 p.m.  
**Session Two** 2/10-3/24 5:30-6:30 p.m.

### Zumba Fitness - Online Zoom!

Zumba combines high-energy dance moves with traditional exercises such as lunges, squats, and arm curls. **Online Zoom:** Instructor will contact you with information on how to join your class (Sanchez) \$65. Tues/Thurs

**Session One** 1/12-2/11 5:30-6:30 p.m.  
**Session Two** 2/16-3/18 5:30-6:30 p.m.



## Professional Development & Workforce Training

### Child Care Basics: Canvas Online

This course is designed to meet licensing requirements for early learning lead teachers and family home childcare providers, STARS 30-hour basics course recognized in the MERIT system. Pre-registration required. Online class using Canvas. (Akins-Fields) \$185, CLCE 48 A

### Fundamentals of Supervision and Management Online!

This course covers time management, delegating responsibility, motivating your employees, solving problems, and resolving conflicts so you can be a more effective manager. Register at [www.ed2go.com/lccbic](http://www.ed2go.com/lccbic) \$115

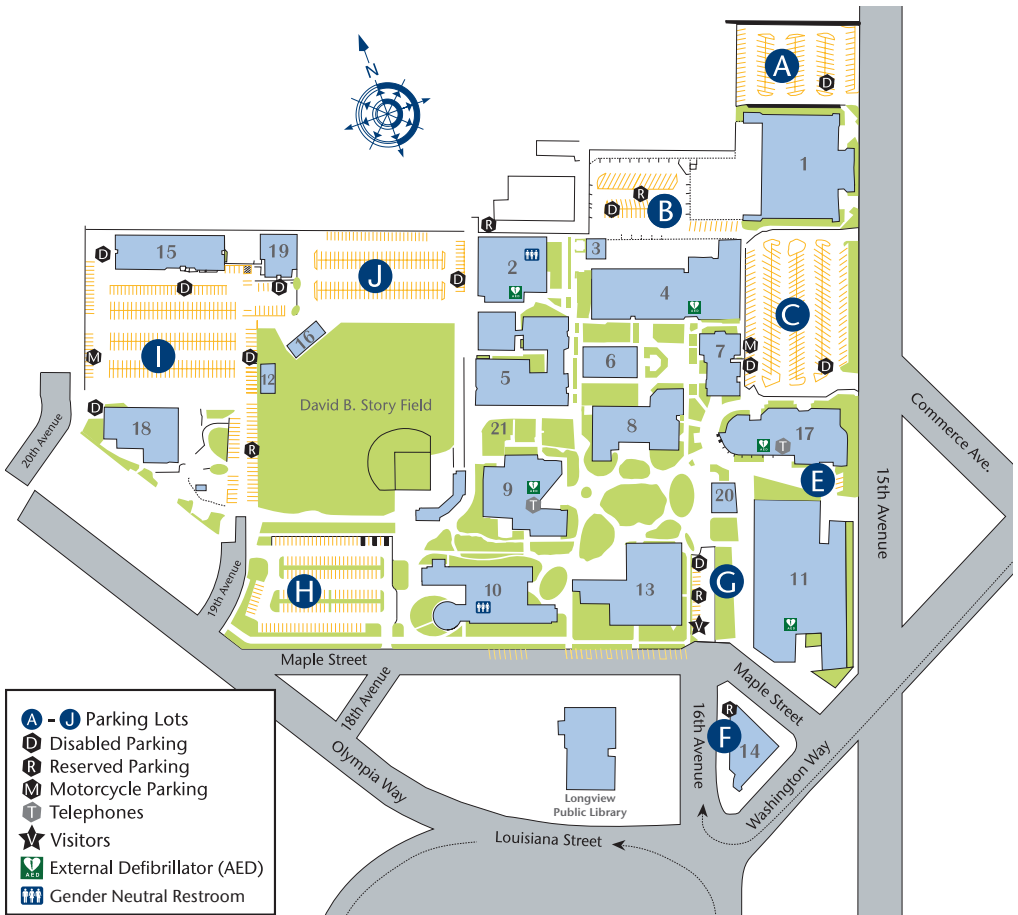
Continuing Education also offers more than 300 online courses and programs. Visit [www.ed2go.com/lccbic](http://www.ed2go.com/lccbic) or email [mharris@lowercolumbia.edu](mailto:mharris@lowercolumbia.edu) for more info.

Online career training is available at [careertraining.ed2go.com/lccbic](http://careertraining.ed2go.com/lccbic).

**Learn more and register online at [lowercolumbia.edu/ce](http://lowercolumbia.edu/ce)**



# LCC CAMPUS MAP



- A - J** Parking Lots
- D** Disabled Parking
- R** Reserved Parking
- M** Motorcycle Parking
- T** Telephones
- ★** Visitors
- ⚡** External Defibrillator (AED)
- ♿** Gender Neutral Restroom

- 1. Don Talley Building (DTV)**
- 2. Gym & Fitness Center (GYM)**
- 3. Steam Plant (SPL)**
- 4. Vocational Building (VOC)**
- 5. Applied Arts Building (AAR)**
- 6. Science Building (SCI)**
- 7. Physical Science Center (PSC)**
- 8. Admissions Center (ADC)**
  - Career Services
  - Cashiers
  - Disability Support Services
  - Financial Aid
  - Registration
  - Student IDs
  - Testing Center
- 9. Library- Alan Thompson (LIB)**
  - eLearning
  - Regional University Center
  - Tutoring Center
- 10. Health and Science Building (HSB)**

- 11. Rose Center for the Arts (RCA)**
- 12. International Center (INC)**
- 13. Main Building (MAN)**
- 14. Administration Building (ADM)**
- 15. Head Start/Home & Family Life (HFL)**
- 16. Batting Barn (BTB)**
- 17. Student Center (STC)**
  - Bookstore
  - Dining
  - Security Office
  - Student Activities Office
- 18. Campus Services Building (CMS)**
- 19. Head Start East Building (HSE)**
- 20. Pavilion**
- 21. Learning & Healing Garden**

**Note:** Buildings are not physically numbered. The numbers on this map are for key purposes only. Parking permits are required in all lots.



1600 Maple Street  
PO Box 3010  
Longview, WA 98632-0310

PERIODICALS

WSS CAR-RT PRESORT  
RESIDENTIAL CUSTOMER

## Look inside and start planning your next chapter.

Whether you're starting a career, looking for a promotion, transferring to a university or just want to learn something new, LCC offers high quality, affordable education right here in the community.

- **New & Noteworthy - page 2**
- **About Us - page 3**
- **How to Register - page 4**
- **Dates & Deadlines - page 5**
- **Online & Registration Services - page 6**
- **Paying for College - page 7**
- **Student Resources & Services - page 9**
- **Arts & Entertainment - page 10**
- **Bachelor's & Beyond - page 11**
- **For High School Students - page 12**
- **Career Pathways - page 13**
- **Corporate & Continuing Education - page 14**
- **Campus Map - page 15**

**lowercolumbia.edu**



LCC is an AA/EEO employer - [lowercolumbia.edu/aa-eeo](https://www.lowercolumbia.edu/aa-eeo)

LCC Clery Annual Security and Fire Safety Report available at [lowercolumbia.edu/CleryASFR](https://www.lowercolumbia.edu/CleryASFR)