

LCC QUARTERLY

WINTER 2025



Complete details available online
lowercolumbia.edu/classes



Winter quarter starts January 6



Winter class schedule now available at lowercolumbia.edu/classes

We offer in-person, online, and hybrid (a combination of in-person and online) classes! See our online class schedule for details.

Key Dates

- **November 18:** priority registration begins for winter 2025
- **November 25:** Priority deadline for financial aid
- **November 25:** open registration begins for winter 2025
- **January 6:** winter quarter classes begin
- **March 14:** last day of winter quarter classes
- **March 17-20:** final exams

FACULTY SPOTLIGHT



Nathan Shepherd, Machine Trades Instructor

Earning a degree from LCC has allowed me to do work that I truly love. Right out of school I found employment out in industry ranging from maintenance machinist to CNC programmer. Now I am back as an instructor passing on my knowledge to the next generation of skilled professionals. Lower Columbia College strengthens the local community. I feel fortunate to be able to help others along their journey of self-improvement.



About This Mailer: LCC sends quarterly mailers to all households in Cowlitz and Wahkiakum counties four times a year to inform residents about college programs and services. Because they are addressed to “residential customer,” we are unable to remove individuals from our distribution list.

Volume 17, No. 1, Winter 2025. LCC Class Schedule (USPS 025-007) is published four times a year (October, February, April and May) by Lower Columbia College. The Lower Columbia College Office of Effectiveness & College Relations is located at 1600 Maple Street, Longview, WA 98632-0310. Periodicals postage paid at Longview, WA and at additional mailing offices.

POSTMASTER:

Send address changes to Lower Columbia College, 1600 Maple Street, Longview, WA 98632-0310.



Congratulations, you're in at LCC!

No minimum academic requirements for general admission.

The cost of attending LCC is about 1/3 the cost of a public university in Washington.



Apply for free @ lowercolumbia.edu/apply



Earn a Bachelor's Degree at LCC!

Earn a Bachelor of Science in Nursing (BSN), a Bachelor of Applied Science in Teacher Education, or a Bachelor of Applied Science in Organizational Leadership and Technical Management from LCC! All bachelor's programs are designed for busy, working adults. Learn more at lowercolumbia.edu/bas



ENROLLING AT LCC

New Students – Getting Started

Connect: lowercolumbia.edu/connect

Meet up with our Outreach team to take a campus tour and receive personal guidance through the admissions process.

Apply: lowercolumbia.edu/apply

At LCC, there are no application fees or minimum academic requirements for admission. Just fill out our online form, and you're in!

Onboard: lowercolumbia.edu/welcome

Before you can meet with an advisor to register for classes, you'll need your Student ID Number (provided after you apply for admission), have math and English placement (LCC has multiple placement options), and take care of other details.

Paying for College

All incoming students are encouraged to apply for Financial Aid through the FAFSA or WASFA to access multiple types of assistance including grants, loans, work-study jobs, scholarships and more.

Visit lowercolumbia.edu/aid for details.

Have questions? Contact our Outreach Team at outreach@lowercolumbia.edu or 360.442.2610. We look forward to seeing you soon!

Non-credit classes: see page 14 for more information about Continuing Education classes.

• • • • •

Purchase your textbooks from the LCC Bookstore by visiting bookstore.lowercolumbia.edu

Current Students – How to Register

1. Visit the **ctcLink mobile website** at wa130.ctclink.us. Select the **ctcLink Login tile and login using your ctcLink ID number** and password. Once you are logged in, you will see the ctcLink mobile dashboard.
2. **Find out your earliest registration date/time** by selecting **Enrollment** from the left navigation list, then select the **Enrollment Dates** option. Choose a quarter, if more than one is displayed.
3. **Communicate with your program advisor** to review your academic plan and plan your class schedule. To find your advisor's information, log into ctcLink. Select **Enrollment** from the left navigation list, then select **Advisor Information**. If an advisor has been assigned to you, their information will be displayed here. You can email your advisor by selecting the envelope icon.
4. **Register for classes** online in ctcLink. From the ctcLink mobile dashboard, select **Class Information** from the left menu and then select **Class Search**. Enter search criteria, select a class section and then select **Enroll**. Students taking more than 18 credits must contact Registration for assistance.
5. **Pay your tuition and fees** by the deadline listed on the Academic Calendar online. You may pay online with a credit or debit card using ctcLink. From the ctcLink mobile dashboard, select the **Financials** icon from the sidebar menu, select **What I Owe**, then select **Make a Payment**. You can also pay in person, when the campus is open, at the Cashier. Tuition payment plans are available. Learn more about the tuition payment plan at lowercolumbia.edu/payment-plan.

Class Full?

Select "yes" during online registration to get on a waitlist.

PAYING FOR COLLEGE



Think you can't afford college? Think again! Washington has one of the most generous financial aid programs in the country, allowing many people to attend community college for free.

Financial Aid

lowercolumbia.edu/financial-aid

There are two different application forms for financial aid. The FAFSA is for U.S. citizens and permanent residents of the U.S. The WASFA is for people who are ineligible for federal financial aid due to immigration status.

Basic Food, Employment & Training (BFET)

lowercolumbia.edu/bfet

Students who are eligible for federal basic food benefits may be eligible for BFET support.

Opportunity Grant

lowercolumbia.edu/opportunity-grant

Unemployed or underemployed adults seeking a certificate or degree in a high demand career field may be eligible for an Opportunity Grant.

Scholarships

lowercolumbia.edu/scholarships

Fill out a single application form to be considered for everything LCC has to offer. The application cycle is usually open from February through April.

Tuition & Fees

lowercolumbia.edu/tuition

Visit us online for more information about current tuition and fee rates.

Tuition Payment Plan

lowercolumbia.edu/payment-plan

Pay your tuition and fees in smaller, more convenient monthly installments.

Veterans' Services

lowercolumbia.edu/veterans

LCC offers approved educational programs to eligible veterans and dependents of deceased or totally disabled veterans under Title 38 and Title 10, U.S. Code.

Washington College Grant

lowercolumbia.edu/free-college

Finally, a guaranteed state need grant for middle- and low-income families. Just fill out the FAFSA or WASFA to see if you qualify to attend college for free.

WorkFirst

lowercolumbia.edu/workfirst

Through referral from the Department of Social and Health Services, WorkFirst supports parents receiving Temporary Assistance for Needy Families (TANF).

Worker Retraining

lowercolumbia.edu/worker-retraining

Worker Retraining is a state-funded program to help dislocated and unemployed workers retrain for a new career.

For more info about paying for your education, visit lowercolumbia.edu/pay-for-college



COLLEGE & CAREER PREPARATION

Only \$25 a quarter | Financial help available | Start anytime

WHAT WE OFFER

- High School Diploma
- English Language Learning
- College math & English prep
- Assistance with computer skills
- Support in Spanish
- Online & in-person options
- Flexibility - start anytime!
- Low-cost classes

Start a certificate or degree program right away with Integrated Basic Education and Skills Training (I-BEST), even if you're not ready for college level math and/or English. Don't have a high school diploma or GED? You may qualify for federal financial aid with the Ability to Benefit program.

lowercolumbia.edu/ccp | 360.442.2580



DATES & DEADLINES

Veterans/Dependents Priority Registration begins	November 11
Priority registration for winter quarter begins	November 18
Open registration for winter quarter begins	November 25
Priority application deadline for winter financial aid	November 25
Winter quarter tuition due	December 16
First day of classes	January 6
Last day of online registration.....	January 8
Instructor permission required to add a course.....	January 9
Last day for 100% tuition refund	January 12
Last day to withdraw and avoid a "W"	January 17
Martin Luther King Day Holiday.....	January 20
Last day for 50% tuition refund	January 25
Last day to apply for winter quarter graduation	January 27
Presidents' Day Holiday	February 17
Last day to withdraw from classes	February 28
Last day of winter quarter classes	March 14
Winter quarter finals*	March 17-20

The FINAL EXAM SCHEDULE is located at
lowercolumbia.edu/classes/finals.php

HIGH SCHOOL & BEYOND

Running Start Program

Tuition-free college for high school students

Running Start is a statewide program that lets eligible high school juniors and seniors take college classes tuition-free. Students can attend part- or full-time, and can continue to participate in high school activities such as sports.



lowercolumbia.edu/running-start • 360.442.2442

Career and Technical Education (CTE) Dual Credit

Earn college credit for free without leaving your high school

High school students enrolled in CTE dual credit courses at their high schools are eligible for FREE LCC college credit through this program. Call or visit us online to learn more about how to get a jump start on a high-skill, high-wage career.

lowercolumbia.edu/cte • 360.442.2610



Start Next Quarter



Find out if you qualify for special funding!

Take the 10-minute survey at startnextquarter.org to find out if you might qualify for programs that help cover college expenses.

Learn more at startnextquarter.org

ALL ABOUT BOOKS

Need to purchase your textbooks?

The LCC Bookstore makes it easy!

Visit the Bookstore online at bookstore.lowercolumbia.edu to purchase your textbooks.

If you have a Financial Aid book voucher, apply it directly online. It's super easy!

You may have your books shipped to you, or set for in-store pick up.

EVERYTHING

you need to be ready for class!



We have scrubs!

BUY YOUR BOOKS ONLINE

- ▶ Textbooks ordered during the first two days of class may take two additional days to process
- ▶ Options available for purchasing Online: Ship textbooks directly to you or pick-up in store

We accept:



bookstore.lowercolumbia.edu



RIDE FREE
with LCC
Student ID!

lowercolumbia.edu/bus

CLASSES THAT USE FREE OR INEXPENSIVE TEXTBOOKS

Visit lowercolumbia.edu/classes to access the list, or search for "Low-Cost Textbooks" or "OER - No Textbook to Purchase" under "Course Attributes" in the online schedule.

ARTS & ENTERTAINMENT

ART GALLERY

Heidi Keith & Erika Warhus

November 4-December 5

Steve Belz

January 13-February 6

Jane Szabo

February 17-March 13

lowercolumbia.edu/gallery

Volunteers Wanted

ROSE CENTER FOR THE ARTS

If interested, please contact the Rose Center at 360.442.2512 or rca.events@lcc.ctc.edu

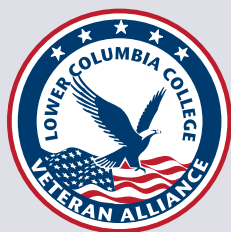


For information about current events and productions, go to lowercolumbia.edu/aande



Want a thriving career? We'll help you find the path that's right for you.

- Associate & Bachelor's Degrees, HS Diplomas, and Certificates
- From flexible schedules to hands-on training, we want to help prepare you for a rewarding career.
- Choose from over 90 programs in eight career pathways – see the list at lowercolumbia.edu/programs.



If you are a veteran who has served in the armed forces and are attending LCC, you are invited to join our Veteran Alliance Organization.

LCC also has a Vet Corps Navigator onsite, as well as a Veterans' Center on the first floor of the Student Center.



Washington State

Learn more at lowercolumbia.edu/veterans

You Can Make a Difference!

Help a student most at risk of abandoning their education due to financial hardship by donating to the Student Success Fund.



lowercolumbia.edu/foundation

Study Abroad with LCC!

- Winter 2025 - Australia / New Zealand
- Spring 2025 - Italy
- Summer 2025 - TBA



For details please visit lowercolumbia.edu/international

WINTER CLASSES

Accounting

ACCT 101	INTRODUCTION TO ACCOUNTING CONCEPTS
ACCT& 201	PRINCIPLES OF ACCOUNTING I
ACCT& 202	PRINCIPLES OF ACCOUNTING II

Allied Health

AH 114	HEALTHCARE COMMUNICATION SKILLS
--------	---------------------------------

American Sign Language

ASL& 121	AMERICAN SIGN LANGUAGE I
ASL& 122	AMERICAN SIGN LANGUAGE II

Anthropology

ANTH& 206	CULTURAL ANTHROPOLOGY: DIV
-----------	----------------------------

Art & Design

ART& 100	ART APPRECIATION: DIV
ART 101	BEGINNING DRAWING
ART 102	INTERMEDIATE DRAWING
ART 103	ADVANCED DRAWING
ART 106	TWO-DIMENSIONAL DESIGN
ART 107	COLOR THEORY AND DESIGN
ART 111	BEGINNING PAINTING
ART 112	INTERMEDIATE PAINTING
ART 113	ADVANCED PAINTING
ART 121	INTRO DIGITAL IMAGING & ILLUSTRATION
ART 122	INTERMEDIATE DIGITAL IMAGING & ILLUSTRATION
ART 123	ADVANCED DIGITAL IMAGING & ILLUSTRATION
ART 131	INTRO TO GRAPHIC DESIGN
ART 132	INTERMEDIATE GRAPHIC DESIGN
ART 133	ADVANCED GRAPHIC DESIGN
ART 141	BEGINNING CERAMICS
ART 142	INTERMEDIATE CERAMICS
ART 143	ADVANCED CERAMICS
ART 151	INTRO TO DIGITAL PHOTOGRAPHY
ART 152	INTERMEDIATE DIGITAL PHOTOGRAPHY
ART 227	HISTORY OF WESTERN ART II: DIV

Astronomy

ASTR& 101	INTRO TO ASTRONOMY
-----------	--------------------

Automotive Technology

AMTC 100	ESSENTIALS OF MECHANICS
AMTC 114	AUTOMOTIVE CHASSIS
AMTC 206	FUELS AND EMISSIONS

Biology

BIOL& 100	SURVEY OF BIOLOGY
BIOL& 160	GENERAL BIOLOGY WITH LAB: CELL/MOLECULAR
BIOL 179	HUMAN BIOLOGY & EXERCISE
BIOL& 222	MAJORS CELL/MOLECULAR: W/LAB
BIOL& 241	HUMAN A & P 1
BIOL& 242	HUMAN A & P 2
BIOL& 260	MICROBIOLOGY

Blueprint Reading

BLPT 150	MACHINISTS BLUEPRINT READING
BLPT 160	BLUEPRINT READING FOR WELDERS

Business Administration

BUS 100	FOUNDATIONS OF BUSINESS SUCCESS
BUS& 101	INTRO TO BUSINESS
BUS 104	BUSINESS MATH APPLICATIONS
BUS 119	BUSINESS COMMUNICATIONS
BUS 144	MANAGEMENT OF HUMAN RELATIONS: DIV
BUS 150	CUSTOMER SERVICE/MANAGEMENT
BUS 165	SALESMANSHIP
BUS& 201	BUSINESS LAW
BUS 244	HUMAN RESOURCE MANAGEMENT
BUS 264	PRINCIPLES OF MARKETING
BUS 290	DESIGN THINKING & ENTREPRENEURSHIP
BUS 294	CAREER SUCCESS

Business Technology

BTEC 10	KEYBOARDING WITH SPEED AND ACCURACY
BTEC 45	INTRO TO MS WORD
BTEC 46	POWERPOINT FUNDAMENTALS
BTEC 47	INTRO TO DIGITAL PUBLISHING
BTEC 50	INTRODUCTION TO GOOGLE APPS
BTEC 55	WEBSITE MANAGEMENT
BTEC 104	INTRO TO BUSINESS TECHNOLOGY
BTEC 110	KEYBOARDING SPEED/ACCURACY
BTEC 111	WORD PROCESSING I
BTEC 120	SPECIALIZED APPS FOR BUSINESS LABORATORY
BTEC 130	ELECTRONIC CALCULATORS I
BTEC 131	INTRODUCTION TO SPREADSHEETS
BTEC 135	ADVANCED DATA ANALYSIS
BTEC 145	INTRO TO MS WORD
BTEC 146	POWERPOINT FUNDAMENTALS
BTEC 147	INTRO TO DIGITAL PUBLISHING
BTEC 148	INTRODUCTION TO OUTLOOK
BTEC 150	INTRO TO GOOGLE APPS
BTEC 155	WEBSITE MANAGEMENT
BTEC 160	MEDICAL SCRIBE
BTEC 162	INTRO ICD-10 CODING II
BTEC 164	MEDICAL OFFICE LAW & ETHICS
BTEC 165	CULTURAL AWARE CARE PRO: DIV
BTEC 172	MEDICAL OFFICE PROCEDURES
BTEC 176	SOCIAL DETERMINANTS OF HEALTH LECTURE
BTEC 181	MEDICAL TERMINOLOGY I
BTEC 182	MEDICAL TERMINOLOGY II
BTEC 230	ELECTRONIC CALCULATORS II

Chemistry

CHEM& 100	PREPARATORY CHEMISTRY
CHEM& 110	CHEMICAL CONCEPTS W/LAB
CHEM& 121	INTRO TO CHEMISTRY
CHEM& 131	INTRO TO ORGANIC/BIOCHEMISTRY
CHEM& 161	GENERAL CHEM W/LAB I
CHEM& 162	GENERAL CHEM W/LAB II
CHEM& 262	ORGANIC CHEM W/LAB II

College Success

COLL 74	MATH SUCCESS
COLL 101	COLLEGE SUCCESS 101
COLL 289	EMPLOYMENT PORTFOLIO SEMINAR

Communication Studies

CMST 127	COMPETITIVE PUBLIC SPEAKING
CMST 137	INTERCOLLEGIATE DEBATE
CMST 227	COMPETITIVE PUBLIC SPEAKING
CMST& 210	INTERPERSONAL COMMUNICATION
CMST& 220	PUBLIC SPEAKING
CMST& 230	SMALL GROUP COMMUNICATION
CMST 237	INTERCOLLEGIATE DEBATE
CMST& 240	INTERCULTURAL COMMUNICATION: DIV
CMST 330	PROF/ORG COMMUNICATIONS

Computer Science

CS 110	INTRO TO MICROCOMPUTER APPLICATIONS
CS 170	COMPUTER PROGRAMMING
CS 208	INTRODUCTION TO MANAGEMENT INFORMATION SYSTEMS
CS 270	DATA STRUCTURES
CS 275	OBJECT-ORIENTED PROGRAMMING

Criminal Justice

CJ& 101	INTRO TO CRIMINAL JUSTICE
CJ 154	AMERICAN LEGAL SYSTEM
CJ 180	REPORT WRITING LAW ENFORCEMENT
CJ 184	ADMINISTRATION OF JUSTICE
CJ 187	CRISIS INTERVENTION PROF

Diesel/Heavy Equipment Tech

DHET 104	ELECTRICAL SYSTEMS
DHET 210	DIESEL ENGINE REBUILD

Drama

DRMA& 101	INTRO TO THEATRE
DRMA 107	INTRODUCTION TO ACTING II
DRMA 116	STAGE CRAFTS I
DRMA 117	STAGE CRAFTS II
DRMA 118	STAGE CRAFTS III
DRMA 197	REHEARSAL AND PERFORMANCE II
DRMA 207	ACTING II
DRMA 297	REHEARSAL AND PERFORMANCE V

Early Childhood Education

ECED& 105	INTRO TO EARLY CHILDHOOD ED
ECED& 120	PRACTICUM-NURTURING RELATIONSHIPS
ECED& 180	LANG/ LITERACY DEVELOP
ECED 262	PRACTICUM V/PRACTICE

Earth Science

ERSI 104	INTRODUCTION TO EARTH SCIENCES
ERSI 105	EARTH SYSTEMS

Economics

ECON 105	INTRODUCTION TO ECONOMICS
ECON 445	HEALTHCARE ECONOMICS
ECON& 201	MICRO ECONOMICS
ECON& 202	MACRO ECONOMICS

Education

EDUC& 115	CHILD DEVELOPMENT
EDUC& 130	GUIDING BEHAVIOR
EDUC& 150	CHILD/FAMILY/COMMUNITY
EDUC 191	FIELD EXPERIENCE I
EDUC& 204	INCLUSIVE EDUCATION: BIRTH-21
EDUC& 205	INTRO TO ED W/FIELD EXPERIENCE: DIV
EDUC 301	PRACTICUM I
EDUC 320	LANGUAGE ARTS FOR TEACHERS
EDUC 340	CONCEPTS OF MOTOR SKILLS
EDUC 402	REFLECTIVE PRACTICE II
EDUC 410	INQUIRY BASED SCI FOR TEACHERS
EDUC 412	STUDENT TEACHING II
EDUC 439	PORTFOLIO/PROF ASSESSMENT

Engineering

ENGR 206	MICROPROCESSOR SYSTEMS
ENGR& 121	ENGINEERING GRAPHICS I
ENGR& 122	ENGINEERING GRAPHICS II
ENGR& 123	ENGINEERING GRAPHICS III
ENGR& 215	DYNAMICS



Visit lowercolumbia.edu/classes to search by subject or instructor. Select *more filters* to search by *instruction mode*, such in-person, online or hybrid (hybrid classes meet in-person and online). Select *LCC Course Attributes* to find classes that use low- or no-cost textbooks, meet distribution requirements, etc. Use the *Days* filter if you need classes that meet on particular days of the week.

English

ENGL 98	COLLEGE-READY ENGLISH I
ENGL 99	COLLEGE-READY ENGLISH II
ENGL& 101	ENGLISH COMPOSITION I
ENGL& 102	ENGLISH COMPOSITION II
ENGL 105	CRITICAL READING AND WRITING SKILLS
ENGL 215	INTRODUCTION TO FILM STUDIES LECTURE
ENGL 231	CREATIVE WRITING
ENGL 232	CREATIVE WRITING
ENGL 233	CREATIVE WRITING
ENGL& 235	TECHNICAL WRITING
ENGL& 244	AMERICAN LITERATURE I
ENGL 270	LITERATURE FOR CHILDREN

Environmental Science

ENVS& 100	SURVEY OF ENVIRONMENTAL SCIENCE
-----------	---------------------------------

Geography

GEOG 105	PHYSICAL GEOGRAPHY
----------	--------------------

Geology

GEO& 101	INTRO PHYSICAL GEOLOGY
GEO& 208	GEOLOGY OF PACIFIC NORTHWEST

Health

HLTH 100	OCCUPATIONAL SAFETY AND HEALTH
HLTH 105	FIRST AID/CPR/BB PATHOGENS
HLTH 106	HEALTH AND WELLNESS
HLTH 245	HEALTH/EXERCISE BEHAVIOR

History

HIST& 127	WORLD CIVILIZATIONS II: DIV
HIST& 136	US HISTORY I
HIST& 137	US HISTORY II
HIST 214	SPORTS IN AMERICAN HISTORY
HIST& 215	WOMEN IN U.S. HISTORY: DIV

Humanities

HUM 104	ETHICS AND CULTURAL VALUES: DIV
HUM 107	HOW TO SEE A PLAY
HUM 109	CRITICAL INTERPRETATION OF MEDIA
HUM& 117	HUMANITIES II
HUM 125	ARTS MAGAZINE PUBLICATION II
HUM 164	CULTURAL JOURNEYS: DIV
HUM 210	MYTH AND RITES: DIV
HUM 230	THINKING ABOUT THINKING

Information Technology

IT 100	IT FUNDAMENTALS
IT 102	INTRODUCTION TO WEB DESIGN
IT 111	INTRO TO WINDOWS
IT 141	PC TECHNICIAN I
IT 212	INSTALL/CONFIGURING WINDOWS SERVER

Machine Trades

MASP 107	MACHINING FOR RELATED OCCUPATIONS
MASP 111	MACHINE SHOP I
MASP 112	MACHINE SHOP II
MASP 113	MACHINE SHOP III
MASP 204	CNC MACHINING CENTER FUNDAMENTALS
MASP 205	CNC TURNING CENTER FUNDAMENTALS
MASP 221	CNC MILLING
MASP 222	CNC TURNING
MASP 223	ADVANCED CNC PROCESSES

Manufacturing

MFG 105	INDUSTRIAL SAFETY
MFG 130	MATERIALS SCIENCE

Mathematics

MATH 78	PRE-COLLEGE MATH I
MATH 79	PRE-COLLEGE MATH II
MATH 87	ESSENTIALS OF PRE-COLLEGE MATH II
MATH 88	PRE-COLLEGE MATH II
MATH 97	ESSENTIALS PRE-COLLEGE MATH III
MATH 98	PRE-COLLEGE MATH III
MATH 105	MATH FOR HEALTH SCIENCES
MATH& 107	MATH IN SOCIETY
MATH 106	INDUSTRIAL MATHEMATICS
MATH 125	APPLIED COLLEGE ALGEBRA
MATH& 131	MATH FOR ELEMENTARY EDUCATORS 1
MATH& 132	MATH FOR ELEMENTARY EDUCATORS 2
MATH& 141	PRECALCULUS I
MATH& 142	PRECALCULUS II
MATH& 146	INTRODUCTION TO STATISTICS
MATH& 148	BUSINESS CALCULUS
MATH& 151	CALCULUS I
MATH& 152	CALCULUS II
MATH 215	DISCRETE MATHEMATICS
MATH 240	DIFFERENTIAL EQUATIONS

Medical Assisting

MEDA 101	MEDICAL VOCABULARY I
MEDA 102	MEDICAL VOCABULARY II
MEDA 122	LAW & ETHICS FOR THE MEDICAL OFFICE



Visit [lowercolumbia.edu/classes](https://www.lowercolumbia.edu/classes) to search by subject or instructor. Select *more filters* to search by *instruction mode*, such in-person, online or hybrid (hybrid classes meet in-person and online). Select *LCC Course Attributes* to find classes that use low- or no-cost textbooks, meet distribution requirements, etc. Use the *Days* filter if you need classes that meet on particular days of the week.

Music

MUSC 100	FUNDAMENTALS OF MUSIC
MUSC& 105	MUSIC APPRECIATION
MUSC 106	KEYBOARD SKILLS I
MUSC 107	KEYBOARD SKILLS II
MUSC 108	KEYBOARD SKILLS III
MUSC 112	EAR TRAINING II
MUSC 115	GROUP PIANO INSTRUCTION
MUSC 122	CONCERT CHOIR II
MUSC 130	JAZZ ENSEMBLE
MUSC 131	BEGINNING GUITAR
MUSC 132	INTERMEDIATE GUITAR
MUSC 133	ADVANCED GUITAR
MUSC& 142	MUSIC THEORY II
MUSC 150	SYMPHONIC BAND
MUSC 152	BELLA VOCE CHOIR II
MUSC 222	CONCERT CHOIR V
MUSC& 242	MUSIC THEORY V
MUSC 252	BELLA VOCE CHOIR V

Nursing

NURS 90	NURSING ASSISTANT
---------	-------------------

Nutrition

NUTR& 101	NUTRITION
-----------	-----------

Oceanography

OCEA& 101	INTRO TO OCEANOGRAPHY
-----------	-----------------------

Organizational Leadership

OLTM 329	FOUNDATIONS OF BUSINESS PRACTICES AND EMERGING TECHNOLOGIES
OLTM 450	NEGOTIATIONS, MEDIATION AND CONFLICT RESOLUTIONS
OLTM 455	ADVANCED PROJECT MANAGEMENT
OLTM 465	CURRENT ISSUES HR MANAGEMENT

Philosophy

PHIL& 101	INTRO TO PHILOSOPHY
PHIL 260	PHILOSOPHY OF RELIGION

Physical Education

PHED 104	PILATES AND STRETCH
PHED 105	PILATES & YOGA - BEGINNING
PHED 105	YOGA FOR BEGINNERS
PHED 120	CROSS-TRAINING
PHED 128	WEIGHT TRAINING
PHED 135	FITNESS WALKING
PHED 152	PERSONALIZED FITNESS
PHED 204	PILATES AND STRETCH
PHED 216	WINTER OUTDOOR EXPERIENCE
PHED 220	CROSS-TRAINING
PHED 228	WEIGHT TRAINING
PHED 252	PERSONALIZED FITNESS

Physical Science

PHSC 109	ENERGY AND MATTER: PHYSICAL SCIENCES
----------	--------------------------------------

Physics

PHYS& 115	GENERAL PHYS II W/LAB
PHYS& 222	ENGR PHYSICS II W/LAB

Political Science

POLS& 101	INTRODUCTION TO POLITICAL SCIENCE
POLS& 202	US GOVERNMENT
POLS& 203	INTERNATIONAL RELATIONS

Process Manufacturing

PMFG 110	INDUSTRIAL & PREDICTIVE MAINTENANCE FUNDAMENTALS
PMFG 154	FUNDAMENTALS OF INSTRUMENTATION AND PLCS
PMFG 201	ELECTRICAL CONTROL EQUIPMENT

Psychology

PSYC& 100	GENERAL PSYCHOLOGY
PSYC& 200	LIFESPAN PSYCHOLOGY
PSYC& 220	ABNORMAL PSYCHOLOGY
PSYC 320	LEADERSHIP AND ORG PSYCHOLOGY

Sociology

SOC& 101	INTRODUCTION TO SOCIOLOGY: DIV
----------	--------------------------------

Spanish

SPAN& 121	SPANISH I: DIV
SPAN& 122	SPANISH II: DIV
SPAN& 123	SPANISH III: DIV
SPAN& 221	SPANISH IV: DIV
SPAN& 222	SPANISH V: DIV
SPAN& 223	SPANISH VI: DIV

Substance Use Disorder Studies

SUDS 101	INTRO TO SUBSTANCE USE DISORDERS
SUDS 102	INTRO TO THEORIES AND COUNSELING
SUDS 105	SUBSTANCE USE DISORDERS/DOMESTIC VIOLENCE
SUDS 114	SUICIDE ASSESSMENT, PREVENTION, AND CRISIS MANAGEMENT
SUDS 121	SUD PROFESSIONAL AND ETHICAL RESPONSIBILITIES
SUDS 203	RELAPSE PREVENT/INTERVENTION

Technology

TECH 100	ADVANCED PRINCIPLES OF TECHNOLOGY
----------	-----------------------------------

Welding

WELD 60	WABO EXAM PREPARATION
WELD 105	RELATED WELDING
WELD 141	SMAW - STICK WELDING W/ E7018
WELD 142	ADVANCED SMAW - WABO
WELD 143	SMAW - STICK WELDING W/ E6010
WELD 241	FCAW-G/D/S WIRE WELD W/E71T-1
WELD 242	ADVANCED FCAW-G - WABO
WELD 243	GMAW SOLID WIRE FEED WELDING
WELD 255	GTAW TIG WELD ER705-6/ER5356

PROFESSIONAL & CONTINUING EDUCATION

Professional and Continuing Education supports the college's mission by providing opportunities for individuals, businesses, and organizations to pursue their personal, professional, and corporate training goals. Contact us to discuss customized options!.

Classes are available in the following categories:

- Art & Culture
- Computers & Technology
- Science & Nature
- Business & Professional Development
- Health & Wellness
- Workforce Training

Winter Fitness

Spin

Mondays and Thursdays, 6 p.m.

High energy fitness class on a stationary bike. Our movement will be fueled by music and staying on the beat. All are welcome! 8 classes for \$70 or a 3-class drop in option!

Yoga

Fridays, 12:15-12:45 p.m.

Build body awareness, develop your strength, test your balance, and extend your flexibility all in one class!

Mat Pilates

*Mondays and Wednesdays, 5:30p.m.,
Online via Zoom*

Open Workout Sessions:

*January 6-March 14,
6 a.m.-6 p.m.*

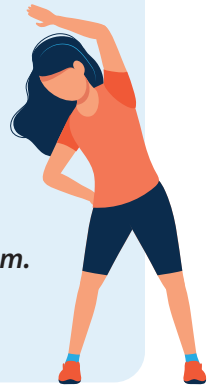
Work out like a Red Devil in the LCC Fitness Center! Exercise on your own time, during the fitness center's open hours!

Nia Functional Fitness

Mondays and Thursdays, 7 a.m.

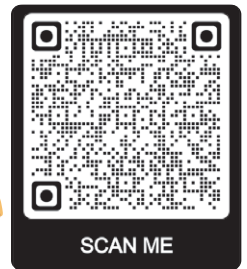
Dance Fitness

Weeknights



First Aid/CPR Certification Classes

available monthly/\$85 per person
check our website for dates and times



See our online class schedule for more info



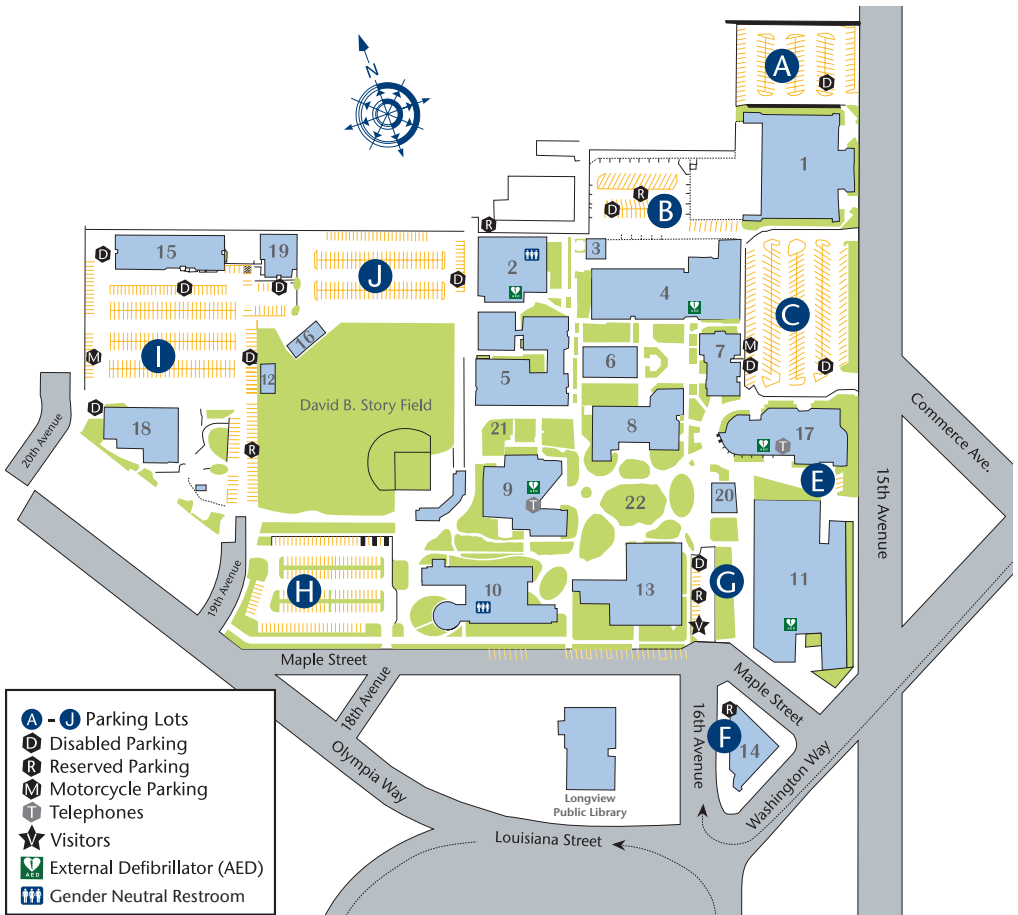
Career Training Programs

Online courses and career training programs prepare you for a new career, or help you advance within your current occupation. Learn new skills and prepare for industry-recognized certifications. We offer 240+ quick certificates to jump start your new career! Check out a list of all our programs at careertraining.ed2go.com/lccbic.

Continuing Education offers more than 300 online courses and programs. Visit www.ed2go.com/lccbic or email mharris@lowercolumbia.edu for more info. Online career training is available at careertraining.ed2go.com/lccbic.

View classes and register online at lowercolumbia.edu/ce or email ehoff@lowercolumbia.edu for more information.

LCC CAMPUS MAP



- A - J** Parking Lots
- D** Disabled Parking
- R** Reserved Parking
- M** Motorcycle Parking
- T** Telephones
- ★** Visitors
- ⚡** External Defibrillator (AED)
- ♿** Gender Neutral Restroom

- 1. Don Talley Building (DTV)**
- 2. Gym & Fitness Center (GYM)**
- 3. Steam Plant (SPL)**
- 4. Vocational Building (VOC)**
- 5. Applied Arts Building (AAR)**
- 6. Science Building (SCI)**
- 7. Physical Science Center (PSC)**
- 8. Admissions Center (ADC)**
 - Career Services
 - Cashiers
 - Disability & Access Services
 - Financial Aid
 - Registration
 - Student IDs
 - Testing Center
- 9. Library- Alan Thompson (LIB)**
 - eLearning
 - Regional University Center
 - Tutoring Center
- 10. Health and Science Building (HSB)**

- 11. Rose Center for the Arts (RCA)**
- 12. International Center (INC)**
- 13. Main Building (MAN)**
- 14. Administration Building (ADM)**
- 15. Head Start/Home & Family Life (HFL)**
- 16. Batting Barn (BTB)**
- 17. Student Center (STC)**
 - Bookstore
 - Dining
 - Security Office
 - Student Activities Office
- 18. Campus Services Building (CMS)**
- 19. Head Start East Building (HSE)**
- 20. Pavilion**
- 21. Learning & Healing Garden**
- 22. The Quad**

Note: Buildings are not physically numbered. The numbers on this map are for key purposes only. Parking permits are required in all lots.



1600 Maple Street
PO Box 3010
Longview, WA 98632-0310

PERIODICALS

WSS CAR-RT PRESORT
RESIDENTIAL CUSTOMER

Look inside and start planning your next chapter.

Whether you're starting a career, looking for a promotion, transferring to a university or just want to learn something new, LCC offers high quality, affordable education right here in the community.

- Online class schedule - page 2
- Enrolling at LCC - page 4
- Paying for College - page 5
- Dates & Deadlines - page 6
- High School & Beyond - page 7
- All About Books - page 8
- Arts & Entertainment - page 8
- Winter Classes - page 10-13
- Corporate & Continuing Education - page 14
- Campus Map - page 15

Think you can't afford college? Think again!

Washington has one of the country's most generous financial aid programs, allowing many people to attend community college for free.

Learn more at lowercolumbia.edu/free-college

Asistencia en Español @ lowercolumbia.edu/espanol

lowercolumbia.edu



LCC is an AA/EEO employer - lowercolumbia.edu/aa-ee
LCC Clery Annual Security and Fire Safety Report available at lowercolumbia.edu/CleryASFR