

LOWER COLUMBIA COLLEGE FOUNDATION
SCHOLARSHIP SOCIAL



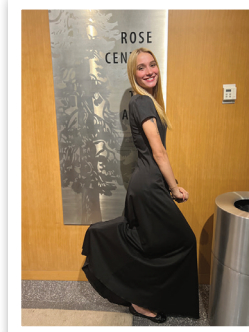
Don't Stop Believing!

2022



When I first started taking classes, I doubted myself whether I would be successful or even be able to finish my homework because of the language barrier. I learned that by asking questions and asking for help, I could begin a new journey to work toward goals that would improve my situation. Since I worked very hard, not only have I finished courses but I am now on the Dean's List for student academic achievement excellence."

~Vidal, LCC Automotive Student



"Getting back into school at this time in my life has been the most satisfying accomplishment other than being a mother. I am working hard to improve myself and showing my children our past does not dictate our future."

~Trisha, LCC Bachelor of Applied Science in Organizational Leadership Student



"I am currently studying elementary education at LCC. I have plans of teaching within our community upon completion of my degree. We need teachers in our community. I am excited to be able to serve my community directly. When I completed my AAS-T in Early Childhood Education, I felt overwhelmingly accomplished. However, I knew I was not yet finished on my educational journey. I have fallen in love with the way children learn and grow. I enjoy watching students grow into their personalities and become themselves."

~Josephine, LCC Bachelor of Applied Science in Teacher Education Student



"I am currently a single mother who is disabled. Being able to afford to go to school to finish my degree gives me something to work towards and hope for my future."

~Jessica, LCC Psychology Student



"After watching videos and asking everyone I could about their techniques and tricks, I switched the position of how I had previously been welding and just like that I got it. Not totally, but to get that gap filled after 2 weeks of continually running into a brick wall, felt amazing, and relieving. It taught me patience and how to endure what seems impossible. It also taught me to be open and flexible about different techniques and positions. After that, I learned to make adjustments quicker so I don't have to go that long before getting it."

~Tytus, LCC Welding Student



"Art and music are as necessary as family, nature, memories, any of the intangibles that make us human. Songs to make people smile are just as important as processors that make computers run faster. A beautiful piece of art will last a thousand years longer than any stock on the market."

~Laurien, LCC Fine Arts Student

"Balancing school, work, and family was very difficult for me at times, but my dedication and determination was rewarded with high grades in my classes and praise from my instructors, coworkers, clients, and supervising nurse."

~Sabrina, LCC Nursing Student



DON'T STOP BELIEVING!

Under the leadership of President Bailey, Lower Columbia College has embodied the phrase, “Believe, Create, and Adapt.” Our students are no different. Over the last few years, they have demonstrated their belief in themselves and the transformational power of education, created new ways to be successful amidst a pandemic and adapted to new learning environments while overcoming barriers.

Thank you to our scholarship supporters! Because you too believe in the transformational power of education, the LCC Foundation provided nearly \$570,000 in student scholarships for the 2022-23 academic year. We appreciate the opportunities you continue to create for LCC students as the college responds and adapts to the future needs of our students and the local community.

Congratulations, scholarship awardees! Your determination and fortitude during these challenging times has brought you closer to your education goals. This booklet honors your belief in yourselves and dedication to your education, your efforts to create a successful future, and your adaptability in the face of adversity. Great job!

We believe in YOU... Don't stop believing in your dreams!

Congratulations and best wishes as you continue your educational journey!



Kendra Sprague
Vice President of Foundation, HR, & Legal Affairs
Lower Columbia College
ksprague@lowercolumbia.edu



Sheila Burgin
Assistant Director of Foundation
Lower Columbia College
sburgin@lowercolumbia.edu

For more information about the LCC Foundation Scholarship Program, please contact:
sburgin@lowercolumbia.edu or visit us on the web: lowercolumbia.edu/foundation



Don't stop believing, LCC. Continue to live the mantra: "Believe, Create, Adapt." That mentality has been the recipe for the success of this institution since its origination in 1934, and it truly defines "the LC Way."

Christopher C. Bailey
President, Lower Columbia College

2022-2023 SCHOLARSHIP RECIPIENTS

Based on Information Available as of October 20, 2022

- Brooke Adams**
Ethel Kirkpatrick Memorial Nursing Endowed Scholarship
P.E.O. Sisterhood Chapter EC (Philanthropic Educational Order of Women) Scholarship
- Julie Agsten**
Charlene C. Lefebvre Endowed Scholarship
K.T. and Luella Henderson Endowed Scholarship
- Margaret Ames**
Wahkiakum Community Scholarship
- Fiona Andrews**
Baker Family Music Scholarship
Quoidbach Memorial Endowed Scholarship
Stanley B. and June L. Rose Foundation Music Scholarship
- Abraham Bah**
Kangas Family Endowed Scholarship
- Keola Barney**
Gene Haas Foundation Machine Trades Scholarship
- Holly Bates**
Applied Industries Endowed Scholarship
Theodore McClelland Natt Endowed Scholarship
- Seberiana Bautista-Hernandez**
George and Katherine Beisse Family Scholarship
Dreamer Scholarship
Ernest J. "Ernie" and Arlene Kuntz Endowed Scholarship
- Thomas Beasley**
Dick and Judi Peters Vocational Scholarship
Ronald and Dorothy Wiest Vocational Endowed Scholarship
- Bailey Beck**
J & S Foundation Nursing Scholarship
- Kristen Belisle**
Helen and Hilmar Kuebel Endowed Scholarship
Ralph J. and Frances J. Forsberg Endowed Scholarship
- Brooklyn Bennion**
Phillip and Jeanne Wertheimer Endowed Scholarship
- Bentti Bisson**
Susan Multanen Memorial Scholarship
- Leah Bodkin**
Evans Family Vocational Scholarship
- Lucas Boursaw**
Terry Reiniger Drama Scholarship
- Micah Boursaw**
Quoidbach Memorial Endowed Scholarship
Stanley B. and June L. Rose Foundation Music Scholarship
Terry Reiniger Drama Scholarship
- Ailaa Brandhorst**
Cowlitz Tribal Scholarship
- Saylor Brown**
Cowlitz County Deputy Sheriff's Benefit Association in honor of Mike Riley Endowed Scholarship
Lt. George Dunn Scholarship
- Korbin Bunn**
Evans Family Vocational Scholarship

- Ellie Burgin**
Rick Arkell Next Step Foundation Scholarship
- Max Burgin**
Ruth and Rex West Endowed Scholarship
- Stephanie Burns**
J & S Foundation Nursing Scholarship
- Katurah Buttrell**
Lower Columbia Retired Educators Association BAS Education Scholarship
- Carrie Byman**
Stanley B. and June L. Rose Foundation Nursing Scholarship
- Annie Carmen**
Karen Turner Memorial Scholarship
- Tessa Chavez**
James B. Gorman Memorial Worker's Scholarship
- Jacob Chilson**
Eric James Mitchell Memorial Endowed Scholarship
Solid Rock Cruisers Christian Car Club of Cowlitz County Scholarship
The Daily News Endowed Scholarship
- Bailey Conway**
Elsie Z. Carlson Memorial Scholarship
Marjorie and Lawrence Dolan Memorial Scholarship
- Ashton Cox**
Gladys D. Petters Memorial Endowed Scholarship
- Patrick Cozzetto**
J & S Foundation Nursing Scholarship
- Jessica Croco**
American Legion Post 155 Nursing Scholarship
Carol and Clayton Greer Memorial Nursing Scholarship
- Cherene Crowson**
Carl Forsberg Memorial Endowed Business Scholarship
Price Fund Scholarship
- Maleah Curtis**
Robert and Margaret Pulliam Endowed Scholarship
- Phuc Dam**
FJR Memorial Scholarship
Nicholas & Barbara Kalinin Memorial Endowed Scholarship
- Brooklynn Darvell**
John Moffitt Foundation Scholarship

Every effort is made to ensure the correct spelling of both our donor and student names. If there is an error, we sincerely apologize. Please let us know by contacting the LCC Foundation office at 360.442.2130.



2022-2023 SCHOLARSHIP RECIPIENTS

Based on Information Available as of October 20, 2022

Briana Davis
J & S Foundation Nursing Scholarship

Sabrina Davis
P.E.O. Sisterhood Chapter FV (Philanthropic Educational Order of Women) Scholarship
Robert and Margaret Pulliam Endowed Scholarship

Samantha Deleon
Cowlitz Tribal Scholarship

Ashley Domion
Wertheimer Endowed Scholarship

Christina Eaton
Diane Marie Shoff Memorial Endowed Scholarship

Elisabeth Eaton
Ailie S. Riski Memorial Nursing Endowed Scholarship

Joel Elhardt
Bates Automotive Scholarship
Cruiz-In to the Elks Automotive Scholarship

Casey Erickson
Stanley B. and June L. Rose Foundation Nursing Scholarship

Taylor Falk
40 & 8 Voiture 99 Nursing Scholarship

Jennifer Fiala
Wertheimer Endowed Scholarship

Sarah Figueroa
Lou and Jeanne Mace Scholarship

Mariah Flenory
Robert and Margaret Pulliam Endowed Scholarship

Remy Frey
Carl and Alona Forsberg Memorial Endowed Art Scholarship
Cowlitz Farm Forestry Association Scholarship
Joe and Alona Fischer Art Scholarship

Joshua Frymire
Johnny and Jessie Greene Vocational Endowed Scholarship

Susan Gann
David M. and Mary P. Anderson Endowed Scholarship
Kelso-Longview Chamber of Commerce Scholarship

Kendra Genanatti
Dr. P. H. Henderson Jr. Memorial Nursing Scholarship
Norma Sari Nursing Endowed Scholarship

Deyriss Gomez
Gladys D. Petters Memorial Endowed Scholarship

Nathan Gray
Juel G. Sheldon Memorial Endowed Scholarship
Marcum Student Athletic Scholarship

Michelle Guajardo
Helen Simons Memorial Endowed Scholarship

Jace Gunter
Solvay Longview STEM Scholarship

Mackenzie Hass
Richard and Karen Hardecker Nursing Scholarship

Breana Higgins
Byrdena Stouffer Cornell Endowed Scholarship
LaRiviere Memorial Democratic Club Endowed Scholarship
Ramona J. and Elmer Sylvester Endowed Scholarship

Emily Higgins
Lower Columbia Retired Educators Association BAS Education Scholarship

Liam Hogg
Gene Haas Foundation Machine Trades Scholarship

Amber Hook
Carl Devin Rotarian Memorial Scholarship

Sadee Huckleberry
Love Big Nursing Scholarship

Kayla Humbyrd
LCC Single Parent Scholarship
Marylou Schall Memorial Endowed Scholarship
P.E.O. Sisterhood Chapter BN (Philanthropic Educational Order of Women) Scholarship

Frank Hunter
BTEC Cookbook Scholarship
Wertheimer Endowed Scholarship

Madeline Jacobson
Harry and Elizabeth M. Collins Memorial Nursing Scholarship
Love Big Nursing Scholarship

Jane Johnson
Jessie Bridges Endowed Scholarship

Trisha Johnston
P.E.O. Sisterhood Chapter CO (Philanthropic Educational Order of Women) Scholarship
R.A. Long Class of 1944 Clyde Shadiow Endowed Scholarship

Randle Jones
Edward E. and Gina Cloney Scholarship
Terence E. Shell Memorial Scholarship

Christina Jurado
Ellen Rosbach Memorial Endowed Scholarship
Mary Floriene Rountree Memorial Scholarship
The Honorable Frank and Arlene Price Foundation Scholarship

April Justis
Kathryn Rowe Beasley Endowed Scholarship

Shalyn Kerr
Applied Industries Endowed Scholarship

2022-2023 SCHOLARSHIP RECIPIENTS

Based on Information Available as of October 20, 2022

Mark Kirchhoff
Bart Stanley Memorial Endowed Scholarship
Nichole B. Sherman Memorial Music Scholarship
Quoidbach Memorial Endowed Scholarship
Wendy Adams Memorial Endowed Scholarship

Trevor Knee
Jim and Marianne Mitchell Scholarship
Price Fund Scholarship

Valentin Kochenkov
Hedwig Waldron Nursing Endowed Scholarship funded by the Rosina E. Williamson Living Trust

Jessica Kudlacek
Harvey J. and Marcella M. Mashinter Memorial Social Science Endowed Scholarship

Clarisa Kuhlmann
Lynn Howell Memorial Endowed Scholarship

April Larsen
J & S Foundation Nursing Scholarship

Aria Larsen
Terry Reiniger Drama Scholarship

Savannah Larson
Cowlitz Farm Forestry Association Scholarship
Science Engineering and Math Scholarship

Seah Lehi
Kim O'Neill RN Nursing Scholarship
Lydia Bryant Endowed Scholarship
Sherry Lozier Memorial Nursing Scholarship

Jacob Leitz
Andrew Shold Memorial Endowed Scholarship

Kelli Livezey
Dreamer Scholarship
Richard and Karen Hardecker Nursing Scholarship

Rachel Lopez
Untouchables Car Club Scholarship

Jake Lorimer
Edna E. Hartman Endowed Scholarship
Emary B. and Jane G. Piper Memorial Endowed Scholarship
William C. Davis Jr. Endowed Scholarship

Destiny Losolla
Fred H. Baxter Memorial Endowed Scholarship

Owen Luchies
Ralph J. and Frances J. Forsberg Endowed Scholarship

Cole Lutgen
Gene Haas Foundation Machine Trades Scholarship

Paige Mace
Andrew Shold Memorial Endowed Scholarship

Sarah Maffett
Cowlitz Farm Forestry Association Scholarship

Levi Maravilla
Bruce E. Rodman Memorial Endowed Scholarship

Hailee Martin
Untouchables Car Club Scholarship

Keisha Maupin
Chuck and Anita Klawitter and Barbara Sweeney Endowed Scholarship

Presley McClung
Jim and Marianne Mitchell Scholarship

Quinton McDaniel
Charles D. and Delores M. Beard Memorial Endowed Nursing Scholarship
Lower Columbia College Nursing Alumni Endowed Scholarship

Emily McIntosh
Dr. William J. Holaday Memorial Scholarship

Kayla McSweeney
Robert and Margaret Pulliam Endowed Scholarship

Cheyeann Meyer
LCC Single Parent Scholarship

Landon Mooney
Korten Family Music Endowed Scholarship
Untouchables Car Club Scholarship

Adah Moore
The Mike Dugaw Fighting Smelt Memorial Endowed Scholarship

Ashley Morales
Bruce E. Rodman Memorial Endowed Scholarship

Barbara Mwesigwa
Cowlitz Tribal General Scholarship
Herbert and Irma Patterson Endowed Scholarship

Kha Ngo
Untouchables Car Club Scholarship

Angela Nikiforov
Cowlitz Tribal General Scholarship

Jasmari Nolasco
Betty and Larry Johnson Athletic Scholarship
Myklebust-Johnson Memorial Endowed Athletic Scholarship
Robert and Margaret Pulliam Endowed Scholarship

Brianne Nye
Futcher Endowed Accounting Scholarship

Yuri Okuno
Cowlitz Tribal General Scholarship

Tytus Old Elk
Ronald and Dorothy Wiest Vocational Endowed Scholarship
Weld Devils Scholarship

Jayden Olsen
Norman H. Parks Memorial Endowed Scholarship
Robert and Margaret Pulliam Endowed Scholarship

James-Pierre Perkins
Robert and Margaret Pulliam Endowed Scholarship

Kenna Pollock Lemmons
J & S Foundation Nursing Scholarship

Mica Radcliff
Carl Forsberg Memorial Endowed Business Scholarship
Lester and Ida Mae Bennett Endowed Scholarship
The Captain Hal Mahnke Endowed Scholarship for Education in Law Enforcement



2022-2023 SCHOLARSHIP RECIPIENTS

Based on Information Available as of October 20, 2022

Daryn Rogers
Rosedale Vocational Scholarship

Leanna Russell
James A. Nelson Woodland Friends of LCC Scholarship

Adalie Schierscher
Ella C. Miller Endowed Scholarship
LaRiviere Memorial Democratic Club Endowed Scholarship

Abigail Schroeder
Donald G. & Doris M. Felthous Memorial Endowed Scholarship
Roger and Jeane (Wirkkala) Moksness Endowed Scholarship

Emma Seter
AAUW (American Association of University Women) Cowlitz Branch Endowed Scholarship
Weld Devils Scholarship

Shannen Simpson
Rick Arkell Next Step Foundation Scholarship

Tanya Smith
J & S Foundation Nursing Scholarship

Jeneaka Spencer
Baker Lumber Scholarship
Beatrice L. Johnson Art Memorial Endowed Scholarship
Robert and Margaret Pulliam Endowed Scholarship

Raychel Squibb
Earl and Mae Malmstrom Endowed Scholarship
John Moffitt Foundation Scholarship

Sheila Staines
P.E.O. Sisterhood Chapter IL (Philanthropic Educational Order of Women) Scholarship

Brianna Sweet
FJR Memorial Scholarship

Mackayla Swogger
Robert and Margaret Pulliam Endowed Scholarship

Y Ta
Ernest J. "Ernie" and Arlene Kuntz Endowed Scholarship
Longview Pioneer Lions Club Oscar Lemiere Memorial Scholarship
McCrary Family Endowed Scholarship
Paul and Marlene Laufman Endowed Scholarship

Owen Taylor
Gene Haas Foundation Machine Trades Scholarship

Melissa Tellevik
J & S Foundation Nursing Scholarship

Abigail Thayer
The Honorable Frank and Arlene Price Foundation Scholarship

Karlee Thomas
Sister Francena Dodd Nursing Scholarship
The Honorable Frank and Arlene Price Foundation Scholarship

Haley Thompson
Cowlitz Tribal General Scholarship

Orathai Thongdee
ESL to Work Scholarship

Josephine Toci
Terry and Ruth Ann Tack Endowed Scholarship

Arwyn Tranholt
Ramona J. and Elmer Sylvester Endowed Scholarship
Terrie Hughes Memorial Scholarship

Ashley Triplett
J & S Foundation Nursing Scholarship

Jennifer Tsugawa
Cowlitz Tribal Scholarship

Katelynne Tygret
Larry Ward Hamm Memorial Endowed Scholarship

Karisma Vega
Carl and Alona Forsberg Memorial Endowed Art Scholarship
Mary Lewis Memorial Art Scholarship

Vidal Velasquez Villagran
Cascade Natural Gas Scholarship
Cruiz-In to the Elks Automotive Scholarship
Longview Pioneer Lions Club Frank Brown Vocational Scholarship
Monty Multanen Memorial Scholarship

Toni Vossen
Wertheimer Endowed Scholarship

Caitlin Wachmann
Cowlitz Tribal Scholarship
LCC Alumni Women's Basketball Scholarship in honor of Jan Karnoski

Regina Warburton
Luh Family Endowed Nursing Scholarship

Eric Weese
Gene Haas Foundation Machine Trades Scholarship
Twining Family Memorial Endowed Scholarship

Hannah Wheeldon
John Brookhart Memorial Scholarship

Taylor Wilkinson
Cowlitz Farm Forestry Association Scholarship

Sylvia Winningham
Carl Forsberg Memorial Endowed Business Scholarship
Ernest J. "Ernie" and Arlene Kuntz Endowed Scholarship
Lovingfoss-Juell Endowed Scholarship

Emily Wood
Terry Reiniger Drama Scholarship

Kayla Wood
Carol and Clayton Greer Memorial Nursing Scholarship
Dolores Hendricks Memorial Nursing Scholarship
Longview Masonic Lodge #263 Gladys Petters Endowed Scholarship

Cayden Wotipka
Lt. James Mosley Memorial Scholarship

Amanda Young
Dr. John Terrey Endowed Scholarship
The Honorable Frank and Arlene Price Foundation Scholarship

Laurien Zahn
Mark VanZanten Memorial Scholarship

ENDOWED SCHOLARSHIPS ADMINISTERED BY THE LCC FOUNDATION

As of June 30, 2022

The **AAUW COWLITZ BRANCH ENDOWED SCHOLARSHIP** was established by the American Association of University Women (AAUW) in 2008. The chapter members energetically raised funds in the local area to create this scholarship opportunity for women attending LCC. The female student who is selected must be a full time, Washington State resident preparing to enter their second year at LCC and have a minimum 2.5 GPA to apply and maintain.

The **AILIE S. RASKI MEMORIAL NURSING ENDOWED SCHOLARSHIP** was established in 2015 through a generous estate gift from Ronald Raski, son of Ailie. It was Ronald's intention to honor his mother's lifelong yet unfulfilled wish of becoming a nurse by offering a scholarship to support the dreams of future nurses. Applicants must be majoring in nursing, a Washington State resident, maintain a 3.0 GPA, and have financial need. Scholarship is renewable for a second year if criteria continues to be met.

The **ANDREW SHOLD MEMORIAL ENDOWED SCHOLARSHIP** was established in 1983 and provides tuition assistance for Wahkiakum High School graduates or Wahkiakum County residents. Mr. Shold was an elementary teacher on Puget Island and in Cathlamet. He loved education and left this bequest in order to assist those students wishing to continue their education. Criteria gives preference to: (1) Wahkiakum High School graduates; (2) Wahkiakum County residents; (3) Community College District #13 residents. Additional criteria include: academic potential, full time student, and a recommendation from a high school teacher or college administrator. Scholarship is renewable for a second year if student continues to meet criteria.

The **APPLIED INDUSTRIES ENDOWED SCHOLARSHIP** was established in 2017 by the Applied Industries, Inc. Board of Directors after dedicating 56 years of service to the local community with the intent of providing a living legacy of educational opportunities for LCC students with disabilities. Eligible applicants must have a documented disability and be registered with LCC's Disability Support Services. Scholarship is renewable for a second year provided student remains in compliance with criteria.

The **BAKER FAMILY MUSIC SCHOLARSHIP** was established in 2016 by James Baker, owner of Baker Lumber in Kelso. As an LCC Alumni, Jim is a former LCC tennis player, an original LCC Booster Club member and an LCC Athletics 2016 Hall of Fame Inductee. This scholarship will go to a full time LCC student with a minimum 3.0 GPA who is majoring in Music. This scholarship is renewable for an additional year, provided student maintains compliance with criteria.

The **BART STANLEY MEMORIAL ENDOWED SCHOLARSHIP** was established in 2014 by the Stanley and June Rose Foundation in memory of their grandson, Bart. This scholarship is intended for a part-time music major with a minimum 2.5 GPA.

The **BEATRICE L. JOHNSON ART MEMORIAL ENDOWED SCHOLARSHIP** was established in 1997 by her longtime friend, Evelyn A. Drake. Bea taught art at local elementary schools and at LCC from 1939-1970. The scholarship provides assistance to students majoring in art who intend to teach or make art their career. Eligibility criteria include financial need, academic and community service activity in consultation with the LCC art faculty. Applicant must provide portfolio of work for review.

The **BRUCE E. RODMAN MEMORIAL ENDOWED SCHOLARSHIP** was created by Delores Rodman in 2008 to honor her late husband. Mr. Rodman was a member of the LCC Foundation Board of Directors, was a founder and instructor at the Washington State Real Estate Education Foundation and a lifelong promoter of education. Qualified applicants must be a Washington resident, entering freshman, full time student who is majoring in Business. First preference given to first generation college students and graduates of a Longview high school. Other preferred but not required criteria include 3.0 GPA and financial need.

The **CAPTAIN HAL MAHNKE ENDOWED SCHOLARSHIP FOR EDUCATION IN LAW ENFORCEMENT** was established by Hal and the late Laura Mahnke in 2019 and fully endowed in 2022 with the intention of supporting future law enforcement officers. To be eligible, students must have and maintain a minimum 2.5 GPA and be attending LCC with the intent of becoming a police officer. Criminal Justice majors encouraged to apply.

The **CARL DEVIN ROTARIAN MEMORIAL ENDOWED SCHOLARSHIP** was established in 2019 by Carl's loving wife, Patricia, and funded through a joint venture between Longview Early Edition Rotary and Patricia Devin. Carl was an active and committed Rotarian who worked at LCC as a Dean of Vocational Studies from 1968 until his retirement in 1998. During his tenure, he oversaw the development and implementation of LCC's Automotive, Diesel, Nursing and Head Start programs. First preference given to an LCC vocational student. Scholarship is renewable for an additional year.

The **CARL AND ALONA FORSBERG MEMORIAL ENDOWED ART SCHOLARSHIP** was established in 2018 by Joe Fischer in memory of Carl and Alona's belief in educational opportunities and Alona's love of the arts. This endowment supports the arts program and scholarships. The scholarship is intended to assist LCC art majors who are Washington state residents, have a 2.5 or higher GPA and have financial or economic need based on EFC. Scholarship is renewable for a second year if criteria continue to be met.

The **CARL FORSBERG MEMORIAL ENDOWED BUSINESS SCHOLARSHIP** was established by Joe Fischer in 2018 through a gift from the Carl and Alona Forsberg estate. This tribute honors Carl's entrepreneurial spirit and success in business. This renewable scholarship is intended for students majoring in business, have a minimum 2.5 GPA, are Washington state residents, and have financial or economic need. This scholarship is renewable for an additional year provided criteria continue to be met.

The **CHARLES D. AND DELORES M. BEARD MEMORIAL ENDOWED NURSING SCHOLARSHIP** was established in 2005 and generously funded in 2015 by the late Delores Beard to benefit nursing students who have been accepted into LCC's nursing program. The scholarship will be awarded to full time students who have successfully completed Nursing 101 and maintain a minimum 2.5 GPA.

The **COWLITZ COUNTY DEPUTY SHERIFF'S BENEFIT ASSOCIATION IN HONOR OF MIKE RILEY ENDOWED SCHOLARSHIP** was established in August 2007. Mike Riley served as a deputy for twenty years and served two terms as a State Representative before becoming seriously ill. The association created this scholarship to support Mike Riley's dream of providing opportunities for students interested in the field of law enforcement. The scholarship is awarded to full-time Washington state residents, with a 2.8 grade point average.

The **DAVID M. AND MARY P. ANDERSON ENDOWED SCHOLARSHIP** was established in 2005 by the Anderson family in honor of Mr. Anderson. Mr. Anderson had been an active member of the business community for twenty-five years. The scholarship is awarded to a full time student with a business major that has shown academic achievement and participated in extra-curricular involvement at the high school level. Minimum 2.5 GPA required. Preference to student currently involved in LCC extra-curricular activities.

The **DIANE MARIE SHOFF MEMORIAL ENDOWED SCHOLARSHIP** was established in 1992 and provides a scholarship to a full time student with financial need pursuing a degree in business, education, or early childhood education and a minimum 2.5 GPA. First preference for a female, single parent with high unmet need.

The **DICK AND JUDI PETERS VOCATIONAL SCHOLARSHIP** was established in 2018 and permanently endowed in 2022 to support a full-time second year student majoring in vocational programs with first preference to a working student. Additional eligibility criteria include being a resident of Cowlitz, Wahkiakum, Pacific or Lewis counties, having a 2.5 or higher GPA, and having financial need but does not qualify for financial aid.

The **DONALD W. LANSING MEMORIAL ENDOWED SCHOLARSHIP** was established in 2020 through the estate of Mr. Lansing. This scholarship will assist students who graduated from Castle Rock High School with first preference to those who intend on transferring to WSU-Vancouver after graduating from LCC.

The **EARL AND MAE MALMSTROM ENDOWED SCHOLARSHIP** was established in 1998. The Malmstroms were business owners in the Longview area and lived here for 40 years before retiring to California. The scholarship assists entering freshmen who have economic need. Applicants must have a minimum 2.8 GPA to apply and maintain a 3.0 cumulative GPA. Recipient must carry a minimum of 5 credits while attending LCC.

The **ED AND BETTY CUTRIGHT & LAFON BOHANNON WORDEN VOCATIONAL AND MUSIC SCHOLARSHIP** was established in 2022 by Ed Cutright. The scholarship is intended to support a full-time LCC student majoring in vocational trades or music programs. Qualified applicants must also be a resident of Cowlitz, Wahkiakum, Pacific or Lewis counties and have financial or economic need based on EFC. Scholarship funds are restricted to tuition, fees, books, and tools.

The **ELLA C. MILLER ENDOWED SCHOLARSHIP** provides first preference opportunity to a recent Kelso High School graduate and athlete who intends to go on to a four-year degree. Second preference to a recent graduate and athlete of any other local high school. Extracurricular activities and community service considered. Student may be part time or full time, minimum 2.0 GPA to apply and maintain, and who has financial need.

The **ELLEN ROSBACH MEMORIAL ENDOWED SCHOLARSHIP** was established in 2013 by her children, Gregory, Dennis, and Chris. Mrs. Rosbach was a nursing instructor at Lower Columbia College in the 1970's and 1980's where she also served as Department Chair. This renewable scholarship was created to assist a second year, full time nursing student with completed pre-requisites with a 3.0 GPA who is pursuing a Licensed Practical Nursing Degree or a Registered Nursing Degree, and who has financial need. Scholarship is renewable for a second year if criteria continues to be met.

The **EMARY B. AND JANE G. PIPER MEMORIAL ENDOWED SCHOLARSHIP** was endowed in 1997 with generous gifts from family and friends. Mr. Piper was Vice Principal and Athletic Director at R. A. Long High School and is remembered for his service to youth, church, and community. The scholarship provides tuition assistance to full-time students with a minimum 2.5 GPA and who have demonstrated a commitment to community service and/or school activities.

The **ERIC JAMES MITCHELL MEMORIAL ENDOWED SCHOLARSHIP** was established in 2017 by his loving grandparents, James and Marianne Mitchell. This scholarship is intended for a student at LCC who is in their second year, is a Washington state resident attending full time with a 3.0 or higher GPA and is not receiving Financial Aid with a preference to students who are majoring in Computer Science or Business.

The **ERNEST J. "ERNIE" AND ARLENE KUNTZ ENDOWED SCHOLARSHIP** was established in 1993 by Mr. and Mrs. Kuntz. Ernie was active in civic affairs and a supporter of LCC sports. Each year, a full time student who would not otherwise be able to continue their education receives a scholarship for tuition based on academic achievement and potential. In order to qualify, applicants must be Washington state residents and have a 2.75 GPA.

The **ETHEL KIRKPATRICK MEMORIAL NURSING ENDOWED SCHOLARSHIP** was established in 2002 by Dr. Neal Kirkpatrick and Mrs. Carolyn Feasey Kirkpatrick in memory of Ethel Kirkpatrick. Students who qualify must be enrolled full time, have a minimum 2.0 GPA, be accepted into the nursing program, be a resident from Cowlitz County, Rainier or Clatskanie, OR, and have economic need.

The **FRED H. BAXTER MEMORIAL ENDOWED SCHOLARSHIP** was established in December of 2000. The scholarship provides tuition assistance to Washington students who are full time, entering freshmen with financial need, majoring in business, and planning to transfer to a four-year college to pursue their education.

The **FUTCHER ENDOWED ACCOUNTING SCHOLARSHIP** was established in 2020 by the Futchers with the intent of providing an annual scholarship for students who are pursuing a degree in accounting. Applicants must live in the LCC service district or Rainier, OR and have financial need based on FAFSA's EFC. Priority given to students with highest need. This scholarship is renewable for an additional year, provided student maintains compliance with criteria.

The **GEORGE AND KATHERINE BEISSE FAMILY ENDOWED SCHOLARSHIP** was established by the Beisse family in 2022. The annual award amount of \$1,000 is intended to support a student graduating from R.A. Long High School or alternatively, Kelso High School. The successful applicant shall be pursuing an Associates or Bachelor's degree and majoring in elementary or secondary education (or similar program). Preference goes to candidates with financial need and those from under-represented demographics. The scholarship is renewable for a second year if criteria continue to be met.

The **GLADYS D. PETTERS MEMORIAL ENDOWED SCHOLARSHIP** was established in August 2001 with a gift received from Mrs. Petters' trust. This endowment provides a permanent tribute to Mrs. Petters, who believed strongly in the importance of education. The scholarship provides tuition assistance to full-time or part-time students.

The **HARVEY J. AND MARCELLA M. MASHINTER SOCIAL SCIENCE ENDOWED SCHOLARSHIP** was established in 2005. Marcella Mashinter, Harvey's wife, created the scholarship to honor her husband, who taught history and philosophy at LCC from 1967 until his retirement in 1989. Eligible students must be full time, preparing to enter their second year, majoring in the Social Sciences including: history, philosophy, political science, anthropology, sociology, or psychology and have a minimum 3.0 GPA.

The **HEDWIG WALDRON NURSING ENDOWMENT SCHOLARSHIP FUNDED BY THE ROSINA E. WILLIAMSON LIVING TRUST** was established in the fall of 2005. Mrs. Williamson established this fund through a bequest of her estate to honor the life of her daughter, Hedwig Waldron, who preceded her in death. This scholarship is intended for a full time nursing student who has completed Nursing 101 and has a minimum 2.5 GPA.

The **HELEN AND HILMAR KUEBEL ENDOWED SCHOLARSHIP** was created by Helen Kuebel in 2014 in memory of her late husband, Hilmar. Hilmar served as Lower Columbia College's Vice President of Finance and Administration until his retirement in 1998. Helen also served Lower Columbia College as a nursing instructor, Director of Nursing, and Associate Dean of Nursing and Allied Health until her retirement in 2011. Helen was recognized by then-Governor Christine Gregoire for her contributions to the Rural Outreach Nursing Education (RONE) project. The student recipient must be a nursing major with a 2.0 or higher GPA. First preference given to a GED or nontraditional high school student. Scholarship is renewable for a second year if criteria continue to be met.

The **HERBERT AND IRMA PATTERSON ENDOWED SCHOLARSHIP** was established in 2021 in recognition of the Pattersons' love of the community and their dedication to helping others pursue their dreams. Though they did not attend LCC, they recognized the importance of higher education and helped support their sons, Kevin and Mark, when they attended LCC. This scholarship is intended to assist students with financial need and a minimum 2.0 GPA. First preference is given to students pursuing health care or vocational degrees. Scholarship is renewable for a second year, provided student maintains criteria.

The **JAMES A. NELSON WOODLAND FRIENDS OF LCC SCHOLARSHIP** was established in 2015 with the collaborative efforts of Woodland High School, a group of Woodland community members including Tim Welch and Lee Hutton-Welch, Tom Golick, Ron Nelson, and Woodland Rotary. In 2019, a very generous endowment gift from James Nelson ensured scholarship opportunities for Woodland students will be provided into perpetuity. The scholarship will be awarded to LCC students who live in Woodland, are seeking an associate degree at LCC and have a minimum 2.5 GPA. First priority given to a Woodland High School graduating senior.

The **JAMES "BUZZ" GORMAN MEMORIAL WORKER'S SCHOLARSHIP** was established in 2012 by the Gorman family in memory of Mr. Gorman (aka Buzz), who wanted to continue his legacy of helping and encouraging students to complete their education. Buzz retired as the Director of Financial Aid after working at LCC for 31 years. Recipient must be attending LCC part time 5-8 credits, have a minimum 2.5 GPA and be employed a minimum of 25 hours per week.

The **JESSIE BRIDGES ENDOWED SCHOLARSHIP** was established in 2001 by the LCC Foundation Board of Directors after receiving a bequest from her estate. Mrs. Bridges felt strongly about investing in her local community. Students who qualify must be enrolled full time and have a minimum 2.5 cumulative GPA.

The **JOHNNY AND JESSIE GREENE VOCATIONAL ENDOWED SCHOLARSHIP** was created in 1997 by Buzz and Margery Marsh in honor of Margery's parents. Her father, Johnny Greene, taught auto shop classes at R. A. Long High School for many years and her mother, Jessie Greene, was an avid reader. The scholarship provides tuition assistance to full time students with financial need enrolled in the automotive mechanics or diesel/heavy equipment technology programs, as well as machine trades and welding. Minimum 2.5 GPA is required.

The **JUEL G. SHELDON MEMORIAL ENDOWED SCHOLARSHIP** was established by Mrs. Lee Sheldon in 1994 in memory of her husband, Juel, who had attended Lower Columbia College. Eligible full time students must be Washington residents with a minimum 3.0 GPA who are majoring in sciences, earth sciences or engineering with an interest in general biology, botany, water quality, environmental studies, ecology, or civil engineering. Must show academic achievement and potential. Scholarship is renewable for a second year if student maintains criteria.

The **K.T. AND LUELLA HENDERSON ENDOWED SCHOLARSHIP** was created by E. Kenneth Henderson. The Henderson family construction company built several buildings on the LCC campus and Mrs. Henderson was a member of the original LCC Foundation Board of Directors. The scholarship is awarded through the LCC Music Department, and is presented to an outstanding music student based on need and talent. Student must have 3.0 GPA.

The **KANGAS FAMILY ENDOWED SCHOLARSHIP** was established in honor of the Rudolph and Martha Kangas family, including their six children who were all encouraged to obtain college educations. All four daughters attended LCC. Dr. P. J. (Kangas) Peterson established this fund in memory of her parents and sisters, Mary Lou Lance & Trudy Pattison. The scholarship is awarded to recent graduates of Kalama High School who will be attending LCC full time, have a minimum 3.0 GPA, and have financial need.

The **KATHRYN ROWE BEASLEY ENDOWED SCHOLARSHIP** was established by the estate of Hollis Beasley in 1995 in loving memory of his wife who taught secretarial science at LCC from 1947 to 1971. The scholarship provides tuition assistance to students majoring in business technology programs.

The **KEN AND PAT HANSON MUSIC ENDOWMENT** was established in 2010 through a generous estate gift from Ken and Pat Hanson. The purpose is to support LCC music programs and student scholarships. All music scholarship awards are selected by LCC music faculty and awarded on a quarterly basis.

The **KIM O'NEILL, RN NURSING ENDOWED SCHOLARSHIP** was established by Dr. Albert Luh of Kaiser Permanente in honor of Kim O'Neill, LCC Alumni, at her retirement for being an exceptional Registered Nurse in the field of oncology. This scholarship will go to a student who has been accepted into LCC's Nursing Program and has completed the first quarter of the Nursing Program.

The **KORTEN FAMILY MUSIC ENDOWED SCHOLARSHIP** was established in 1997 by Margaret Korten. The Korten family is known for their involvement at LCC and in the community. One of the Korten family members, Mrs. Mardith Korten, served for more than six years on the LCC Board of Trustees. Students who qualify must have three years of piano, band, or orchestra as part of an instructional program (band and/or private lessons). Additional criteria include auditioning for LCC Music Faculty and a minimum 3.0 GPA.

The **LARIVIERE MEMORIAL DEMOCRATIC CLUB ENDOWED SCHOLARSHIP** was established in 1988 and has provided yearly scholarships in memory of Mr. Peter LaRiviere, Sr., a long-time member of the Democratic Men's Club. The endowment assists first year students who perform civic service and have shown leadership ability and academic achievement. Students must be Washington State residents, attend LCC full time, have a 3.0 GPA and financial need. Scholarship is renewable for a second year if student maintains criteria.

The **LARRY WARD HAMM MEMORIAL ENDOWED SCHOLARSHIP** was established in 2021 through a generous donation from the Larry Ward Hamm Revocable Living Trust. The scholarship is intended for students attending Lower Columbia College who maintain a minimum 3.0 GPA.

The **LONGVIEW MASONIC LODGE #263 GLADYS PETTERS ENDOWED SCHOLARSHIP** was established in 2002 by the Longview Masonic Lodge from a gift received through the Petters Family Trust in honor of Clifford and Gladys Petters. First preference is given to a student who has a Masonic relationship through family ties, such as Masonic Lodge, Eastern Star, Job's Daughters, or DeMolay. Students must have a minimum 2.5 GPA and have economic need.

The **LOVINGFOSS-JUELL ENDOWED SCHOLARSHIP** was established in 2002 by Phillip and Annabelle Lovingfoss. First preference is given to students who have obtained their GED. Recipients must maintain a minimum 2.0 GPA.

The **LOWER COLUMBIA COLLEGE NURSING ALUMNI ENDOWED SCHOLARSHIP** was established by three alumni of our nursing program: Bryan Lomax, Ed Hunt, and Don Schaefer. These three former students were grateful for the scholarship they received while earning their degrees and wanted to create an endowed scholarship to help others. Through fundraising efforts, and a generous matching donation from Mark and Theresa McCrady and their families, their dream of an endowed scholarship became a reality in 2007. Eligible students must have successfully completed Nursing 101, have and maintain a minimum 3.0 GPA and be full time students.

The **LUH FAMILY ENDOWED NURSING SCHOLARSHIP** was established in 2021 by the Luh family in honor of Dr. Albert Luh's dedication to the local community. This scholarship is intended to support students who have been accepted into LCC's nursing program, are residents of LCC's service district or Columbia County in Oregon, hold a minimum 3.0 GPA, and have financial need based on EFC. Priority given to applicants who plan to work in the local community after obtaining their nursing degree.

The **LYNN HOWELL MEMORIAL ENDOWED SCHOLARSHIP** was established in 2013 by Lynn's husband, Dan Howell, to honor her dedication to the medical profession. Lynn was an R.N. who worked as a nurse and educator, including teaching for LCC's Nursing Program. This scholarship is awarded to a student majoring in nursing, medical assisting or patient access, or studying to be a pharmacy technician, hemodialysis technician, radiology assistant, or social services advocate. Students must have between 2.0 and 3.4 GPA, have financial need but ineligible for Financial Aid. Scholarship is renewable for a second year if student maintains criteria.

The **MARJORIE AND LAWRENCE DOLAN MEMORIAL SCHOLARSHIP** was originally established by Marjorie's loving husband, Larry, and two sons, Rich and Brian, in 2007 and was endowed in 2020. The scholarship is intended for a graduate of Kelso High School and Washington state resident majoring in nursing, has a minimum 2.5 GPA and has need but does not qualify for Financial Aid due to household income. Scholarship is renewable for a second year.

The **MARK VANZANTEN MEMORIAL ENDOWED SCHOLARSHIP** was established as a tribute to Mark's love of music by his loving mother Dolphine and a fundraiser held by his former band mates. This scholarship is intended for a second year, full time student with a minimum 3.0 GPA who has unmet financial need. Student must be pursuing a degree other than music and first preference will go to a participant in LCC's instrumental music program.

The **MARYLOU SCHALL MEMORIAL ENDOWED SCHOLARSHIP** was created in 2014 by Marylou's twin daughters, Donna Myers and Randi Gord, in loving memory of their mother. Marylou worked at Lower Columbia College for 33 years and continued after retirement to be an avid LCC Red Devil basketball fan. Her passion for LCC was memorialized through a legacy estate gift. This scholarship is available to Lower Columbia College students with a 2.5 or higher grade point average.

The **MCCRADY FAMILY ENDOWED SCHOLARSHIP** was established by the McCrady brothers: Dave, Dennis, Mark and Brian McCrady and their families in honor of their parents Roy and Colleen McCrady. Qualified applicants must be a resident of Southwest Washington or Northwest Oregon, has completed 30 or more credits at LCC and hold a 3.0 GPA. Other criteria include participation in LCC Athletics or other campus club/activity, provide a recommendation from coach or activity adviser, and has community service and leadership skills.

The **MIKE DUGAW FIGHTING SMELT MEMORIAL ENDOWED SCHOLARSHIP** was established in 2012 by Mike Dugaw with the intent of providing scholarships to students who participate in LCC's forensics program into perpetuity. After Mike's passing in 2018, the Dugaw family and LCC forensics staff renewed efforts to fully fund the endowment through tribute donations. To be considered, applicants must have a minimum 2.8 GPA, and participate in LCC's speech and debate program. Financial need considered, but not required.

The **NICHOLAS AND BARBARA KALININ MEMORIAL ENDOWED SCHOLARSHIP** was established in 2019 and funded in 2021 through the Kalinins' estate. This scholarship is intended to support students who are Washington state residents with a minimum 2.5 GPA, and who have economic need but are not receiving Financial Aid. Scholarship is renewable, provided student maintains compliance with criteria.

The **NORMA SARI NURSING ENDOWED SCHOLARSHIP** was established in 2020 in memory of Norma Sari by her loving children, Pat, Phil and Auna. This scholarship is intended for an LCC student who is a Cowlitz County resident and pursuing a degree in the field of nursing.

The **NORMAN H. PARKS MEMORIAL ENDOWED SCHOLARSHIP** was created by Mr. Parks in 1993 providing full tuition to middle-income students with academic promise - students who may fall through the cracks because they do not qualify for federal grants or financial aid. Mr. Parks enjoyed meeting his recipients each year at the Scholarship Social. Sadly, Mr. Parks passed away in 2005, but we honor his memory as his scholarships continue to assist students. Recipients must have minimum 2.5 GPA, attend LCC full time and have financial need (high EFC) but not receiving Financial Aid.

The **PAUL AND MARLENE LAUFMAN ENDOWED SCHOLARSHIP** was established in 2013 by Paul Laufman. Paul was named LCC's first Alumni of the Year in 2013. Paul and his late wife Marlene's (also an LCC alumni) love of LCC and our community runs deep and they have graciously given back to the community. This renewable scholarship is awarded to a student who is majoring in a STEM (Science, Technology, Engineering, and Math) field with a 2.5 or higher grade point average. Scholarship is renewable for a second year if criteria continue to be met.

The **QUOIDBACH MEMORIAL ENDOWED SCHOLARSHIP** was created in 1986 from a gift in memory of Gabrielle M. Quoidbach. In tribute to their mother, Robert Quoidbach and Val Quoidbach generously added to the original endowment. Gabrielle (Gay) Quoidbach was a Choir Director and played a strong leadership role in the early years of the college. Eligible students must have a 2.0 or higher GPA and first preference is given to students pursuing music-related programs. Scholarship is renewable for a second year if criteria continue to be met.

The **R.A. LONG CLASS OF 1944 CLYDE SHADIOW ENDOWED SCHOLARSHIP** was established through generous donations from active members of the 1944 graduating class. This scholarship is intended to benefit a R.A. Long High School graduate and Washington resident who is attending LCC full time, while maintaining a 2.5 GPA and who has financial need.

The **RALPH J. AND FRANCES J. FORSBERG ENDOWED SCHOLARSHIP** was created in 1992 through a generous gift from Mr. Forsberg. It provides scholarships to students majoring in professional/technical studies such as business, nursing, computers, and automotive technology as well as related transfer degrees. Students must be full time, have a minimum 2.5 GPA, and obtain a recommendation from a high school or college official to be eligible. Two awards are given each year, one male and one female award. Scholarship is renewable for an additional year, provided student maintains criteria.

The **RAMONA J. AND ELMER SYLVESTER ENDOWED SCHOLARSHIP** was established in 1995 by Robert Quoidbach in honor of Mr. and Mrs. Sylvester, who were known for their community spirit and support of education. This scholarship provides tuition assistance for full-time students with financial need, priority given to students who have or are participating in the Toutle River Boys Ranch/Youth and Family LINK program with no credit or GPA requirements. Balance of awards will go to full time students with a minimum 2.5 GPA and have financial need. Scholarship is renewable for an additional year, provided student maintains criteria.

The **ROGER AND JEANE (WIRKKALA) MOKSNESS ENDOWED SCHOLARSHIP** was established in 2018 to support a student pursuing an education or engineering degree. Applicants must be a Washington or Oregon resident, attend LCC full time, have and maintain a 3.0 GPA, and who does not qualify for Financial Aid, based on EFC, but has financial need.

The **RONALD AND DOROTHY WIEST VOCATIONAL ENDOWED SCHOLARSHIP** was established in 2019 by Ronald & Dorothy who believe in the value of vocational programs. Ron played football for LCC and graduated in 1954. This endowment will provide two \$1,500 scholarships, to be awarded to one welding and one diesel student. Applicants must be entering their second year of studies, attend LCC full time, have and maintain a minimum 2.8 GPA, have financial or economic need and be a resident of Washington or Oregon.

The **RUTH AND REX WEST ENDOWED SCHOLARSHIP** was established in 1998 and became a fully funded endowment in 2012. Mrs. West was a student in the first class at Lower Columbia College. This scholarship is intended for full time students with financial and economic need who have a minimum 2.5 GPA to apply and 3.0 GPA to maintain.

STANLEY B. AND JUNE L. ROSE FOUNDATION MUSIC SCHOLARSHIP was established in 2002 and endowed in 2012 through the generosity of Mrs. June Rose. Qualifying students must be majoring in music, attending full time, have a minimum 2.5 GPA. Additional criteria include having economic need and exhibiting leadership abilities.

STANLEY B. AND JUNE L. ROSE FOUNDATION NURSING SCHOLARSHIP was established in 2002 and endowed in 2012 through the generosity of Mrs. June Rose. Qualifying students must be majoring in nursing, attending full time, have a minimum 2.5 GPA. Additional criteria include economic need and exhibiting leadership abilities.

The **STOLLER ATHLETICS ENDOWED SCHOLARSHIP** was established in 2018 by Bill Stoller, LCC Alum and Athletics Hall of Fame inductee, to provide student athlete scholarships and maintain LCC's legacy of athletic excellence. These scholarships are offered through the LCC Athletics department.

The **TERRY AND RUTH ANN TACK ENDOWED SCHOLARSHIP** was established in 2021 to provide tuition and fees to LCC students who are Washington state residents and have a minimum 2.75 GPA. Eligible applicants must be enrolled in any major except vocational. Nursing students are eligible to apply. Scholarship is renewable for a second year provided student maintains criteria.

The **TERRY REINIGER MEMORIAL ENDOWED SCHOLARSHIP** was established in 2005 from a bequest received from Mr. Reiniger's estate. He was the comptroller and office manager at Columbia Ford and volunteered as lighting director for LCC drama productions for many years. Terry worked tirelessly for the program and directed a portion of his estate to create a scholarship fund for LCC drama students.

THE DAILY NEWS ENDOWED SCHOLARSHIP was funded in 2002 by the Howard Charitable Foundation. Howard Publishing owned The Daily News from 1999-2002 and established this scholarship as a permanent gift of thanks to the community they did business in. To be eligible, students must be full time, have a minimum 3.0 GPA, be a recent high school graduate with first preference to students studying communication degrees including English, journalism, and writing.

Westmedia Charitable Foundation established the **THEODORE MCCLELLAND NATT ENDOWED SCHOLARSHIP** in 1999. The scholarship is intended to support LCC students with a minimum 2.5 GPA.

The **TWINING FAMILY MEMORIAL ENDOWED SCHOLARSHIP** fund was established in 2021 by Frank Twining and Pete Twining in memory and honor of their father, George Twining who was a local attorney; mother, Joan Lavier, her husband Dorian Lavier; and sister, Robin Twining. The scholarship is intended for Washington and Oregon residents with a minimum 2.5 GPA and who are majoring in the machine trades program.

The **WENDY ADAMS MEMORIAL ENDOWED SCHOLARSHIP** was established in 2007 in honor of Wendy Adams' support of Lower Columbia College. This scholarship supports students with academic merit and financial need who are pursuing a Liberal or Fine Arts degree.

The **WERTHEIMER ENDOWED SCHOLARSHIP** was created as a result of Jeanne Wertheimer's generous donation of Ferguson's Restaurant to the Lower Columbia College Foundation in 1994. In 1999, the restaurant was sold and the proceeds created an endowment which began funding student scholarships. To qualify for the scholarship, students must be full time, pursuing an Associate's Degree, participate in community service activities and not receive Financial Aid but have financial need.

The **WILLIAM C. DAVIS JR. ENDOWED SCHOLARSHIP** was established in February 1997 by his wife, Anne J. Davis. Mr. Davis graduated from the University of Oregon where he earned a BS/BA in Business. He served two years in the U.S. Navy and started the Cowlitz Candy and Tobacco Co. in 1953. Mr. and Mrs. Davis were members of the LCC Booster Club and were involved in local community activities. The scholarship benefits full time students majoring in Business Management or who are pursuing a Bachelor's degree in Business Administration. Students must maintain a minimum 3.5 GPA and have financial need and leadership abilities. Scholarship is renewable for an additional year, provided student maintains criteria.

ENDOWED SCHOLARSHIPS ADMINISTERED BY LOWER COLUMBIA COLLEGE

The **BYRDENA STOUFFER CORNELL ENDOWED SCHOLARSHIP** was established in 1980 for students with financial need pursuing a degree in education with an interest in working with the developmentally and physically handicapped. In order to qualify student must have a 2.0-2.9 GPA range and be full time.

The **CHARLENE C. LEFEBRE ENDOWED SCHOLARSHIP** was established in 1999 to provide tuition assistance to full time students with academic potential and a minimum 2.5 GPA.

The **DONALD G. & DORIS M. FELTHOUS MEMORIAL ENDOWED SCHOLARSHIP** was endowed in 1989 at the time of Donald's death. Mr. Felthous was instrumental in the founding of LCC. This scholarship provides tuition assistance to full-time students who are pursuing engineering or forestry-related careers, and who have maintained a 3.0 minimum grade point average. Scholarship is renewable for a second year if criteria continue to be met.

The **DR. JOHN TERREY ENDOWED SCHOLARSHIP** was established in 1987 and provides assistance to a second-year, full-time student with a minimum 3.5 GPA who is seeking an associate's degree and is a resident of Washington.

The **EDNA HARTMAN ENDOWED SCHOLARSHIP** was established in 1977 to assist students who demonstrate academic potential and financial need.

The **EDWARD E. AND GINA CLONEY SCHOLARSHIP** was established in 1975 to provide assistance to a full-time professional-technical or vocational student with financial need.

The **ELSIE Z. CARLSON MEMORIAL SCHOLARSHIP** was established in 1986 to assist LCC students with financial need. Students may be full or part time and must have a minimum 2.5 GPA to apply and maintain.

The **HELEN SIMONS MEMORIAL ENDOWED SCHOLARSHIP** was created in memory of Helen Simons, a former member of the LCC faculty. Students who qualify must be a social sciences major, have a 2.5 GPA, financial need and be a second year student with a minimum of 6 credits per quarter.

The **LESTER AND IDA MAE BENNETT ENDOWED SCHOLARSHIP** was established in 1976 to recognize students with scholastic achievement who demonstrate good citizenship and participate in community service activities. Additionally, students must have a minimum 2.5 GPA.

The **LYDIA BRYANT ENDOWED SCHOLARSHIP** was established in 1974 to assist students enrolled in the Nursing or Vocational programs.

The **MYKLEBUST-JOHNSON MEMORIAL ENDOWED ATHLETIC SCHOLARSHIP** was established in 1977 to provide assistance to students who demonstrate academic potential and who are involved in the athletic program.

The **PHILLIP AND JEANNE WERTHEIMER ENDOWED SCHOLARSHIP** was created in 1978 to assist students who participate in community service activities, have financial need but are not receiving Financial Aid, and are attending LCC full time.

The **ROBERT AND MARGARET PULLIAM ENDOWED SCHOLARSHIP** was established in 1988 by Robert Pulliam, Jr., whose intention is to assist U.S. citizen students who are serious about obtaining their education. First priority will be awarded to students who maintain at least a 2.7 GPA, have a minimum of 10 credits, and have financial need. Scholarship is renewable for a second year.

ANNUAL SCHOLARSHIPS ADMINISTERED BY LOWER COLUMBIA COLLEGE FOUNDATION

- 40 & 8 Voiture 99 Nursing Scholarship

American Legion Post 155 Nursing Scholarship

Rick Arkell Next Step Foundation Scholarship

Baker Lumber Scholarship

Bates Automotive Scholarship

George and Katherine Beisse Family Scholarship

John Brookhart Memorial Scholarship

BTEC Cookbook Scholarship

Cascade Natural Gas Scholarship

Charitable Lead Trust Scholarships

Harry and Elizabeth M. Collins Memorial Nursing Scholarship

Cowlitz Farm Forestry Association Scholarship

Cowlitz Tribal Scholarship

Cruiz-In at the Elks Automotive Scholarship

Dreamer Scholarship

Lt. George Dunn Scholarship

Selma and Peter Eklund Scholarship

ESL to Work Scholarship

Evans Family Vocational Scholarship

The Honorable Frank L and Arlene G Price Foundation Scholarship

FJR Memorial Scholarship

LCC Foundation's General Scholarship

Gene Haas Foundation Machine Trades Scholarship

Carol & Clayton Greer Memorial Nursing Scholarship

Richard and Karen Hardecker Nursing Scholarship

Dr. P. H. Henderson Jr. Memorial Nursing Scholarship

Dolores Hendricks Memorial Nursing Scholarship

Dr. William J. Holaday Memorial Scholarship

Terrie Hughes Memorial Scholarship

J & S Foundation Nursing Scholarship

Joe and Alona Fischer Art Scholarship

Betty and Larry Johnson Athletic Scholarship

Kelso Longview Chamber of Commerce Scholarship

Helen and Hilmar Kuebel Nursing Scholarship

Lower Columbia Retired Teachers Association BAS Education Scholarship

Lower Columbia College Foundation Vocational Scholarship
- LCC Alumni Women's Basketball Scholarship in honor of Jan Karnoski

Mary Lewis Memorial Art Scholarship

Love Big Nursing Scholarship

Sherry Lozier Memorial Nursing Scholarship

Longview Pioneer Lions Club Frank Brown Vocational Scholarship

Longview Pioneer Lions Club Oscar Lemiere Memorial Scholarship

Lou and Jeanne Mace Scholarship

Marcum Student Athletic Scholarship

Jim and Marianne Mitchell Scholarship

John Moffitt Foundation Scholarship

Lt. James Mosley Memorial Scholarship

Monty Multanen Memorial Vocational Scholarship

Susan Multanen Memorial Nursing Scholarship

Dwain Olsen Memorial Scholarship

PEO Sisterhood, Chapter BN Scholarship

PEO Sisterhood, Chapter CO Scholarship

PEO Sisterhood, Chapter EC Scholarship

PEO Sisterhood, Chapter FV Scholarship

PEO Sisterhood, Chapter IL Scholarship

President's International Student Scholarship Award

Rosedale Vocational Scholarship

Mary Floriene Rountree Memorial Scholarship

Science, Engineering, and Math (SEM) Scholarship

Terrence E. Shell Memorial Scholarship

Nichole B. Sherman Memorial Music Scholarship

LCC Single Parent Scholarship

Sister Francena Dodd Nursing Scholarship

Sister Eleanor Gilmore Nursing Scholarship

Sister Patricia McGuinness Nursing Scholarship

Solvay Longview STEM Scholarship

Walter Tinney Memorial Automotive Scholarship

Traditional Trades Vocational Scholarship

Karen Turner Memorial Scholarship

Untouchables Car Club Scholarship

Wahkiakum Community Scholarship

Weld Devils Scholarship

Thank you!

Your scholarship support helps transform lives. On behalf of the LCC Foundation, LCC students, and staff, we thank you for your vital support of student success and welcome our newest scholarships as of August 31, 2022.

New Scholarships In Memory of...

Nicholas and Barbara Kalinin, beloved father and step-mother to Alexandra
Dr. P.H. Henderson Jr., cherished family member, friend, and physician
Sherry Lozier, beloved mother of Keith and Shelley
Karen Turner, daughter of James and Virginia Wagner, cherished family member and educator
Walter (Walt) Tinney, beloved husband to Sue, father, and educator

New Endowed Scholarships offered through LCC Foundation

Nicholas and Barbara Kalinin Memorial Endowed Scholarship
Luh Family Endowed Nursing Scholarship
Terry and Ruth Ann Tack Endowed Scholarship
Captain Hal Mahnke Endowed Scholarship
George and Katherine Beisse Family Scholarship
Ed & Betty Cutright & LaFon Bohannon Worden Vocational & Music Endowed Scholarship
Dick and Judi Peters Vocational Endowed Scholarship

New Annual Scholarships offered through LCC Foundation

Dr. P.H. Henderson Jr. Memorial Nursing Scholarship
Sherry Lozier Memorial Nursing Scholarship
Presidents International Student Scholarship Award
Karen Turner Memorial Scholarship
Dolores Hendricks Memorial Nursing Scholarship
Love Big Nursing Scholarship
Walter (Walt) Tinney Memorial Automotive Scholarship
Cruiz-In to the Elks Automotive Scholarship

Thank you to the wonderful community leaders who serve on the **LCC Foundation Board of Directors** and the **LCC Board of Trustees**. We are grateful for your talents and dedication to Lower Columbia College.

LCC Foundation Board of Directors

Jenny Isaacson, Chair	Margaret Hickey
Stephen Fuller, Vice-Chair	Mary Howe
James (Jim) Hendrickson, Secretary	Dixie Kolditz
	John Melink
Chris Bailey, LCC President	Jane Rosi-Pattison
Joanna Asplund	Daniel Ruiz
Mike Claxton	Chris Searing
Emily Gardner	Rosemary Siipola
Marnie Harris	Michelle Trekas

LCC Board of Trustees

Mike Karnofski, Chair	George Raiter
Liz Cattin, Vice Chair	Marc Silva
Alice Dietz	

Thank you to the **LCC Scholarship Committee** and the **LCC Financial Aid Office** for their commitment to the success of students through their collaborative work with the LCC Foundation Scholarship Program.

2022-23 Scholarship Committee

Sheila Burgin	Jonna Mallery
Leszek Cromwell	David Maxon
Tanya Daymon	Alyssa Mayclin
Kailie Drumm	Kathy Meier
Nicole Faber	Lucas Myers
Jim Franz	Jamie Nelson
Katrina Fuller	Tamara Norton
Emily Gardner	Connie Ramos
Rich Gushman	Ale Sanchez
Crystal Heitz	Nathan Shepherd
Jennifer Houge	Terri Skeie
Corry Kile	Kendra Sprague
Dixie Kolditz	Theresa Stalick
Kristen Kordecki	Michelle Trekas
Hoa Le	Tim Welch

LCC Scholarship Program Manager

Sheila Burgin, Assistant Director, LCC Foundation



LOWER COLUMBIA COLLEGE FOUNDATION

1600 Maple Street / P.O. Box 3010
Longview WA 98632

360.442.2130

foundation@lowercolumbia.edu

lowercolumbia.edu/foundation